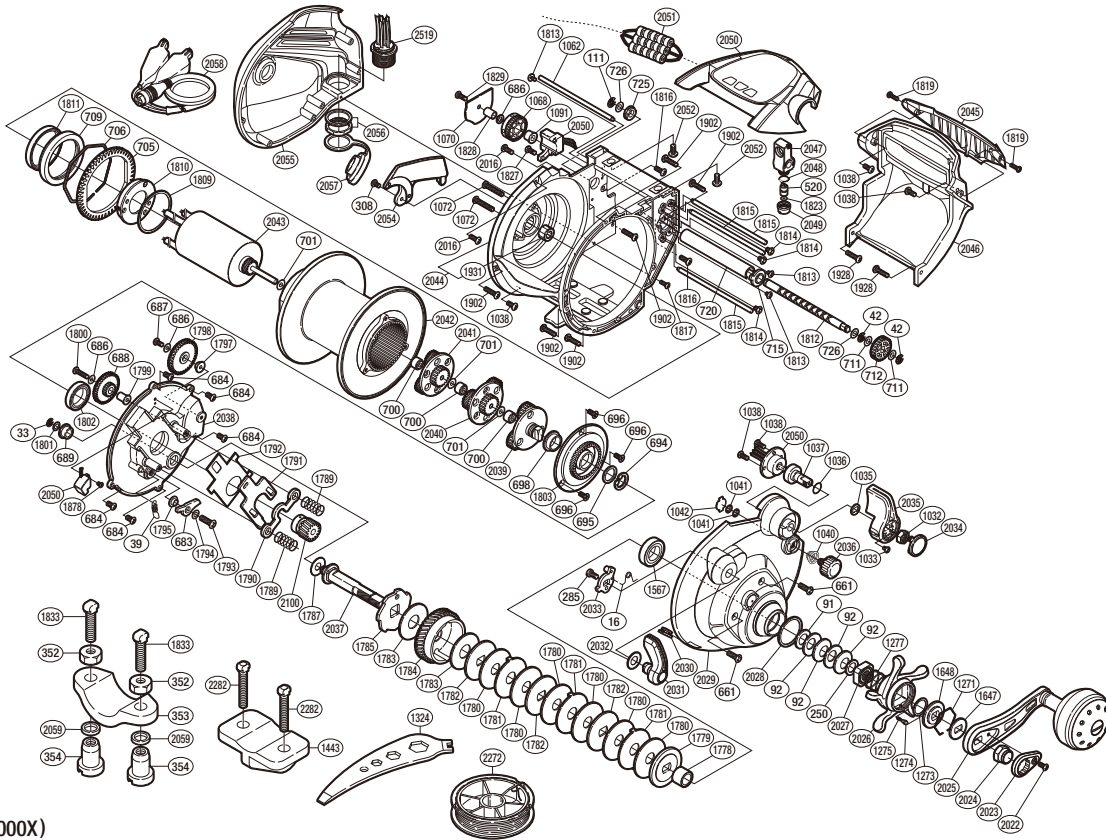


SHIMANO

Beast Master

BM-9000



(51RG469000X)

#	Part No.	Description	#	Part No.	Description	#	Part No.	Description
16	10JYX	Clutch Spring	1274	10BT0	Click Pin	2023	10QL6	Rotor Nut Lock Plate
33	105NG	E Lock	1275	10HZ6	Click Spring	2024	10FT0	Handle Nut
39	10CBS	Anti-Reverse Pawl Spring	1277	10HZ2	Star Drag Spring	2025	103XF	Handle Assembly
42	105NE	E Lock	1567	10KXA	Ball Bearing	2026	10B82	Star Drag
91	104L5	Bearing Thrust Washer	1647	107QM	Drive Shaft Shield	2027	10A3P	Star Drag Nut
92	1052E	Coned Disc Spring	1648	10J2T	Star Drag Click Plate	2028	10G6V	Star Drag Spacer
111	105NJ	E Lock	1778	10BT6	Drive Shaft Sleeve	2029	10HUR	Right Side Plate
250	10BR1	Star Drag Washer	1779	10D4H	Pressure Plate	2030	106NV	Line Clip
285	10FBM	Screw	1780	10L86	Drag Washer	2031	10L0J	Clutch Lever
308	10LSK	Screw	1781	10LBB	Eared Washer	2032	109RJ	Washer
520	10FFZ	Line Guide Pawl	1782	10KZW	Key Washer	2033	10871	Clutch Cam
661	10M70	Screw	1783	10CKR	Drag Washer	2034	10N72	Lever Switch Sticker
683	10PFV	Anti-Reverse Pawl	1784	10Q9X	Drive Gear	2035	10MRD	Lever Switch
684	10M6K	Screw	1785	10A2H	Anti-Reverse Ratchet	2036	10KT7	Cast Control Cap
686	105EN	Washer	1787	10G85	Washer	2037	105D3	Drive Shaft
687	103GP	Screw	1789	104BV	Yoke Spring	2038	105WW	Set Plate
688	10PSZ	Worm Idle Gear B	1790	1047Y	Yoke	2039	10MM7	Reduction Gear Plate B
689	10BQ3	Drive Shaft Bushing	1791	1094R	Clutch Plate	2040	10MMD	Reduction Gear Plate C
694	105S8	C Lock	1792	10AYE	Clutch Plate Washer	2041	10MHX	Reduction Gear Plate A
695	109RA	Washer	1793	10MG8	Screw	2042	1030B	Spool
696	10ML5	Screw	1794	10GCV	Washer	2043	106JQ	Motor
698	10MGW	Plate Bushing (Large)	1795	10PKN	Anti-Reverse Pawl Cover	2044	10KGP	One-Piece Frame
700	10MCW	Plate Bushing (Small)	1797	10PYU	Worm Idle Gear Bushing A	2045	10B3M	Level Wind Cover Sticker
701	109R9	Washer	1798	10MCN	Worm Idle Gear A	2046	10GGK	Level Wind Protector
705	10CUW	Counter Gear A	1799	10PYX	Worm Idle Gear Bushing B	2047	10P46	Line Guide
706	106PU	Gear Retainer	1800	103LZ	Screw	2048	108WQ	O Ring
709	10PWQ	Bearing Rim	1801	10J8D	Washer	2049	10FJD	Pawl Cap
711	105KF	Washer	1802	108PG	Ball Bearing	2050	10MXV	Counter Unit
712	10N99	Worm Gear	1803	10HSK	Spool Plate	2051	10P22	Choke Coil B
715	104T6	Worm Bushing	1809	10GD3	Motor Washer	2052	103HE	Screw
720	10NMQ	Level Wind Guard	1810	10F1R	Motor Holder	2054	10Q2X	Motor Holder B
725	104SX	Worm Bushing	1811	104PK	Ball Bearing	2055	10FWX	Left Side Plate
726	109RN	Washer	1812	10586	Worm Shaft	2056	10BGS	Socket Nut Set
1032	10NAN	Lever Switch Nut	1813	10MPG	Screw	2057	104SL	Socket Cap
1033	103N3	Screw	1814	103L1	Screw	2100	1066Y	Pinion Gear
1035	10NAQ	Key Washer	1815	10PCN	Stabilizer Bar	2519	100XP	Socket Set
1036	10NAR	O Ring	1816	10M2A	Screw			
1037	10N77	Lever Insert Shaft	1817	103NP	Screw			
1038	10LZF	Screw	1819	10MQ2	Screw	352	105N9	Rod Clamp Nut B (Accessory)
1040	10BRG	Spool Tension Spring	1823	10707	Washer	353	10AR5	Rod Clamp (Accessory)
1041	105SB	Cs Lock	1827	103GQ	Screw	354	1046P	Rod Clamp Nut A (Accessory)
1042	1085L	Cast Control Spacer	1828	106PY	Counter Gear Bushing B	1324	10MJ6	Wrench (Accessory)
1062	10PCL	Stabilizer Bar	1829	103LK	Screw	1443	10J9P	Rod Clamp (Accessory)
1068	10MZL	Counter Gear B	1878	10MT4	Screw	1833	10A79	Rod Clamp Bolt (Accessory)
1070	10QC8	Cord Cover	1902	10LSZ	Screw	2059	10B7V	Rod Clamp Nut Washer (Accessory)
1072	10MCO	Screw	1928	10M3Z	Screw	2262	101UW	Rod Clamp Bolt (Accessory)
1091	106PW	Counter Gear Bushing	1931	10F5G	Roller Clutch Bearing			
1271	10KXX	Click Plate Retainer	2016	10LT4	Screw	2058	10FBU	Cable (Accessory)
1273	10G6M	Washer	2022	103GK	Screw	2272	10SB8	Bobbin With Line (Accessory)

Please note that the number of adjusting washers may not be the same as shown in the exploded views. (Adjustment will vary with each individual product.)

(241114)_008