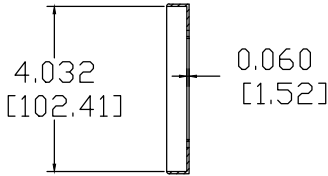
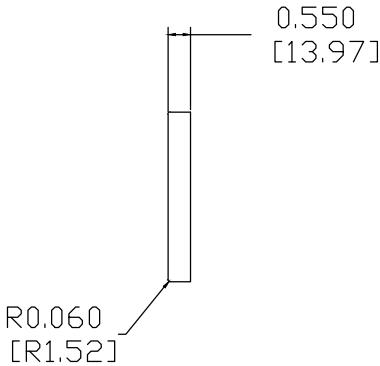
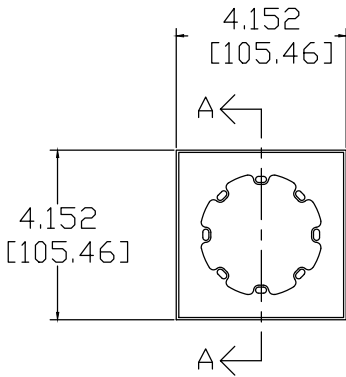
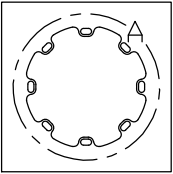


REVISIONS				
ECN	REV.	DESCRIPTION	DATE	APPROVED
	A	RELEASE FOR PRODUCTION	01-20-20	



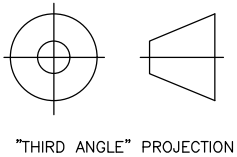
SECTION A-A



DETAIL A

NOTES:

- 1: MATERIAL – DIE-CAST ALUMINUM
UNLESS OTHERWISE SPECIFIED
- 2: FINISH: SATIN WHITE POWDER COAT
UNLESS OTHERWISE SPECIFIED
- 3: MADE BY SOLIDEX AUDIO



"THIRD ANGLE" PROJECTION

PROPRIETARY INFORMATION		JAMES LOUDSPEAKER	
THE DESIGNS, INFORMATION, AND DATA CONTAINED HEREIN ARE PROPRIETARY AND ARE SUBMITTED IN CONFIDENCE, AND SHALL NOT BE DISCLOSED, USED OR DUPLICATED IN WHOLE OR IN PART, FOR ANY PURPOSES WHATSOEVER, WITHOUT THE PRIOR WRITTEN PERMISSION OF JAMES LOUDSPEAKER LLC, 2185 PARK PL, MINDEN, NV 89423. THIS LEGEND SHALL BE MARKED ON ANY REPRODUCTIONS HEREOF IN WHOLE OR IN PART. RECEIPT OF THIS DOCUMENT SHALL BE DEEMED TO BE AN ACCEPTANCE OF THE CONDITIONS SPECIFIED HEREIN.		63SA-7H0	
1/2" SQUARE 4" WOOD TRIM KIT		P/N: SA63-4S-W	
DWR #: 200120-S301		REVISED BY:	
DRAWN BY: S. LOESCH		FILE:	
DATE: 01-20-20		SCALE:	
APPROVED:		DRAFTING APPROVED:	
DO NOT SCALE DRAWING		DRAWING NOT TO BE USED FOR CNC	
TOLERANCES: ANG: ± = .5° FRACT. ± = 1/32		DECIMALS: .XX ± = .01 .XXX ± = .005	
REVISION: A		SHEET 1 OF 1	