

# ASSEMBLY INSTRUCTION

ITEM NO.:9412GY-L

(1/2) Left side Chaise with Adjustable Headrest

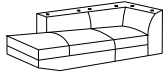


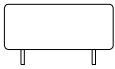

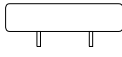
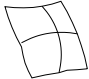


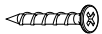
ITEM NO.:9412GY-R

(2/2) Right side 2-Seater with Pull-Out Bed and Adjustable Headrests



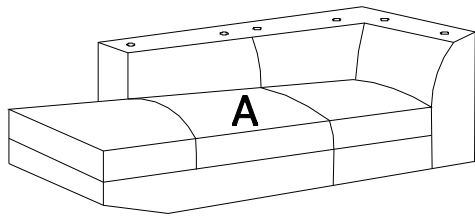
**NOTE:** Do not use power tools for assembly. Power tools increase the risk of over tightening which lead to splitting or cracking the wood.

## COMPONENT LIST

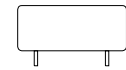
| NO. | DRAWING   | QTY | DESCRIPTION              |
|-----|---|-----|--------------------------|
| A   |  | 1   | LSF Chaise               |
| B   |  | 1   | RSF 2-Seater             |
| C   |  | 1   | Chaise Rear Headrest     |
| D   |  | 2   | 2-Seater Headrest        |
| E   |  | 1   | Chaise Front Headrest    |
| F   |  | 1   | Chaise Middle Headrest   |
| G   |  | 2   | Pillow                   |
| H   |  | 4   | Caster                   |
| I   |  | 6   | Metal Leg / Ø2" * 3-3/8" |
| J   |  | 40  | Screw / 5*50MM           |

# STEP 1

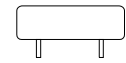
LSF



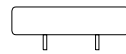
C



D: 2 PCS



E



F



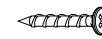
G



H: 4PCS

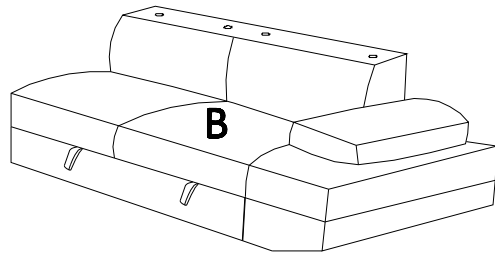


I: 6 PCS



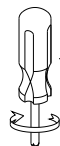
J: 40 PCS

RSF



G

# STEP 2

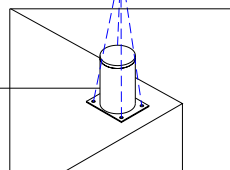


(Not provided)

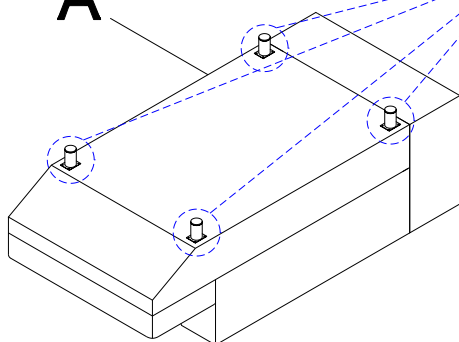
J

Align and assemble legs onto 2-seater and chase bottom as shown in drawings.

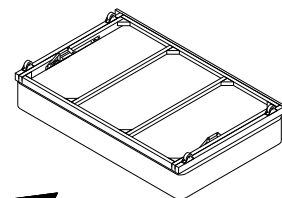
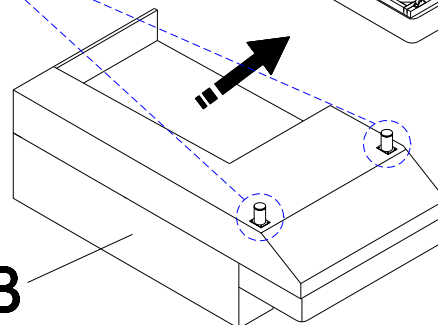
I



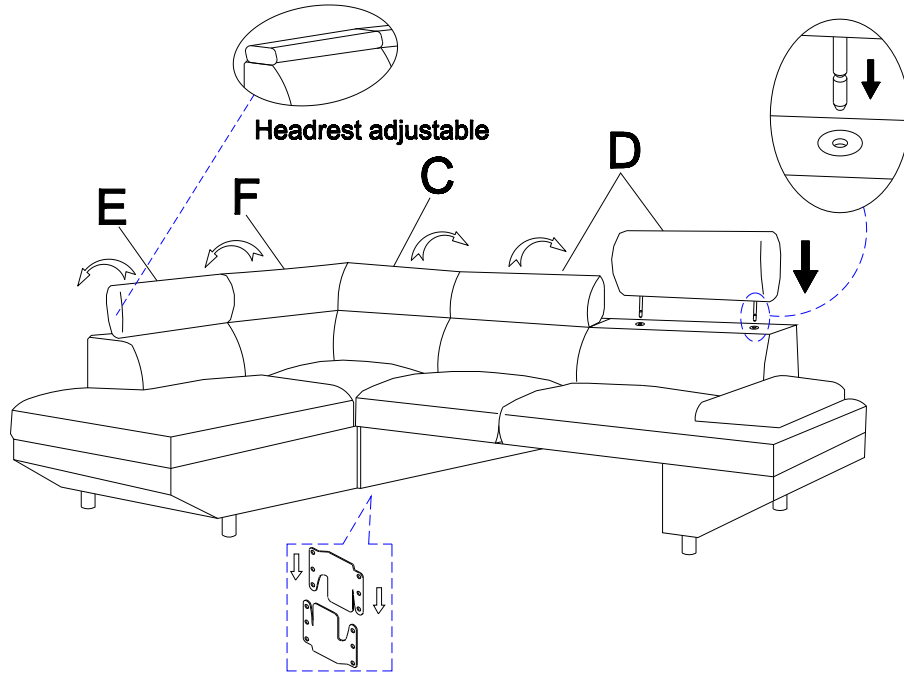
A



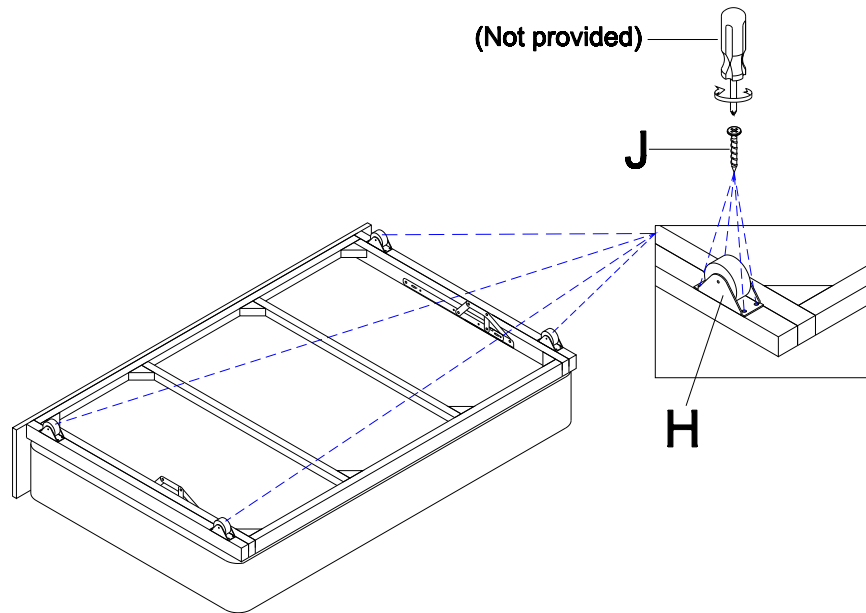
B



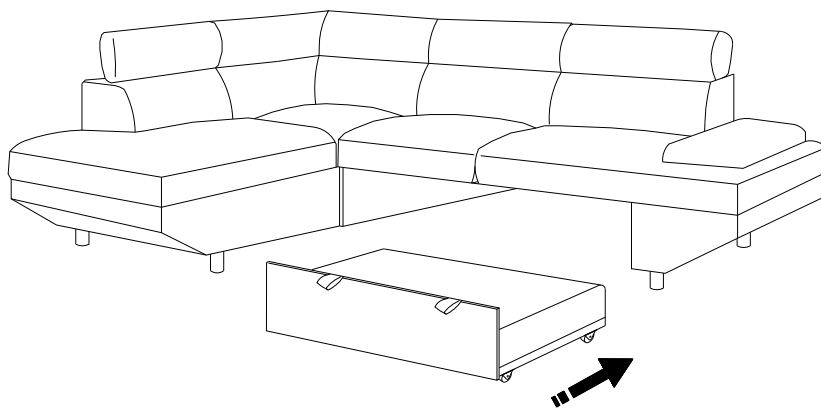
# STEP 3



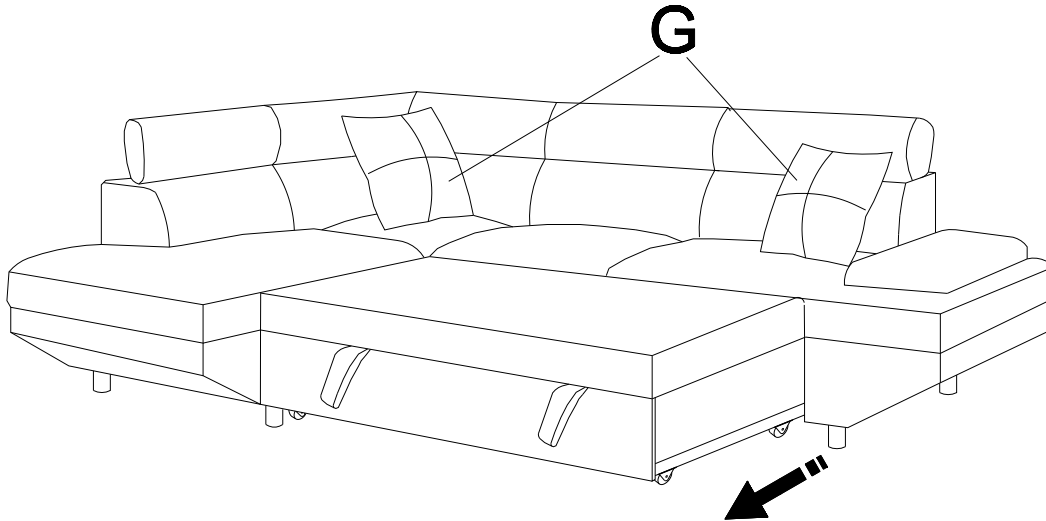
# STEP 4



# STEP 5



## STEP 6



### Care instruction for fabric furniture.

In order to maintain the original appearance of your fabric furniture, please follow below simple care procedures:

- Avoid exposing furniture directly to sunlight or heating or heating conditioning outlets. Sunlight and/or exposure to heating and air conditioning outlets will fade/damage fabric.
- Do not place your upholstered furniture too close to windows, radiators, or vents, and be sure to use windows, radiators, or vents.
- Vacuum or wipe with a cloth regularly to remove dust.



For items used on wooden floor, hard surfaces or carpets, it is recommended to install protective pads under all legs and supports to avoid/prevent from damages/scratches and discoloration.