

Snap One™ Floor and Ceiling Plate

- Available in white or chrome-plated polypropylene
- Split for pre-piped jobs
- 100% rust proof

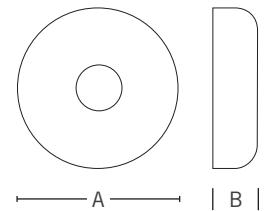
Item No	Description	Dimensions		Pkg	Min Qty	Case Qty
		A	B			
CHROME-PLATED ABS						
926-2	½" CTS	2½"	¾"	B	12	120
926-2PK2	½" CTS, 1/bag	2½"	¾"	C*	12	12
926-3	¾" CTS	2¾"	¾"	B	12	120
926-3PK2	¾" CTS, 1/bag	2¾"	¾"	C*	12	12
926-4	1" CTS	3"	¾"	B	12	120
926-4PK2	1" CTS, 1/bag	3"	¾"	C*	12	12
927-2	½" IPS	2¾"	¾"	B	12	120
927-2PK2	½" IPS, 1/bag	2¾"	¾"	C*	12	12
927-3	¾" IPS	3"	¾"	B	12	120
927-3PK2	¾" IPS, 1/bag	3"	¾"	C*	12	12
927-4	1" IPS	3¾"	¾"	B	12	120
927-4PK2	1" IPS, 1/bag	3¾"	¾"	C*	12	12
927-5PK2	1¼" IPS, 1/bag	3¾"	¾"	C*	12	12
927-6	1½" IPS	3¾"	¾"	B	12	120
927-6PK2	1½" IPS, 1/bag	3¾"	¾"	C*	12	12
927-7	2" IPS	4¾"	¾"	B	12	120
927-7PK2	2" IPS, 1/bag	4¾"	¾"	C*	12	12
WHITE ABS						
926-2W	½" CTS	2½"	¾"	B	12	120
926-3W	¾" CTS	2¾"	¾"	B	12	120
926-4W	1" CTS	3"	¾"	B	12	120
927-2W	½" IPS	2¾"	¾"	B	12	120
927-3W	¾" IPS	3"	¾"	B	12	120
927-4W	1" IPS	3¾"	¾"	B	12	120
927-6W	1½" IPS	3¾"	¾"	B	12	120
927-7W	2" IPS	4¾"	¾"	B	12	120
927-8W	3" IPS	4¾"	¾"	B	12	120



926-2



926-2W



PLUMBING

GAS

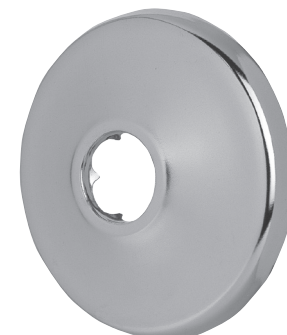
TOOLS

APPENDIX

Shallow Escutcheon

- Chrome-plated Steel
- Sure grip fit

Item No	Description	Dimensions		Pkg	Min Qty	Case Qty
		A	B			
910-2	½" CTS	2½"	¾"	B	25	250
910-2PK2	½" CTS, 2/bag	2½"	¾"	C*	10	10
910-3	¾" CTS	2½"	½"	B	25	250
910-3PK2	¾" CTS, 2/bag	2½"	½"	C*	10	10
911-2	½" IPS	2½"	½"	B	25	250
911-2PK2	½" IPS, 2/bag	2½"	½"	C*	10	10
911-3	¾" IPS	2½"	½"	B	25	250
911-3PK2	¾" IPS, 2/bag	2½"	½"	C*	10	10
911-4	1" IPS	2 ¹³ / ₁₆ "	½"	B	25	250
911-4PK2	1" IPS, 2/bag	2 ¹³ / ₁₆ "	½"	C*	10	10
911-6	1½" IPS (Sch. 40 DWV)	3"	½"	B	25	250
911-6PK2	1½" IPS (Sch. 40 DWV), 1/bag	3"	½"	C*	10	10
911-6D	1½" IPS (Sch. 40 DWV)	3½"	¾"	B	25	250
911-7	2" IPS (Sch. 40 DWV)	3½"	¾"	B	25	250
911-7PK2	2" IPS (Sch. 40 DWV), 1/bag	3½"	¾"	C*	10	10



910-2

