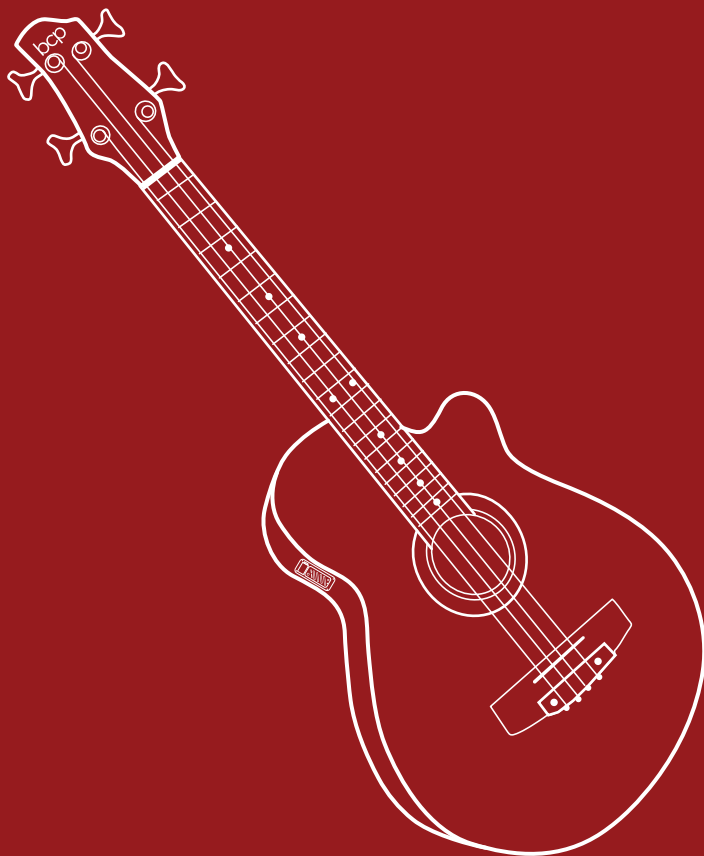




BEST CHOICE  
PRODUCTS



# INSTRUCTION MANUAL

---

Full Size Acoustic Electric Bass Guitar

SKY425 + SKY426 + SKY427 + SKY7242 + SKY7243  
SKY7244 + SKY7245 + SKY7246



**BEST CHOICE  
PRODUCTS**

---

As shoppers, we're always trying to find the perfect balance between quality & value. At BCP, we believe we've achieved that. Our diverse catalog of everyday essentials is tailored especially to our customers & guaranteed to hit that sweet spot of high quality & low price.


— Always. —

## **WARNING**

Please retain these instructions for future reference.

- Repairs to preamplifier or electrical components of the guitar should be performed by a professional.
- To avoid risk of electrical shock, do not expose the instrument to water or excessive humidity.
- Always connect the aux cord to guitar before connecting the cord to amplifier to avoid damage to speaker.
- Do not leave guitar unattended with volume level turned up.
- Neon or fluorescent lighting near the amplifier may cause a hum from the amplifier.
- To avoid damaging your ears, turn down the volume of amplifier before plugging in headphones or speakers.

## **CALIFORNIA PROPOSITION 65**

 **WARNING:** This product can expose you to chemicals including Lead and lead compounds, which is known to the State of California to cause cancer and birth defects or other reproductive harm. For more information go to [www.P65Warnings.ca.gov](http://www.P65Warnings.ca.gov)

## **WARNINGS REGARDING BATTERIES**

- The following safety hazards may result in serious injury or death:
- Do not mix alkaline, standard (carbon zinc) and rechargeable (nickel hydride) batteries.
- Do not mix old and new batteries.
- Non-rechargeable batteries should not be charged.
- Rechargeable batteries should be charged under adult supervision only.
- Exhausted batteries should be removed.
- The supply terminals should not be short-circuited.
- Do not put batteries next to or in a heat source (fire, electronic heating device etc.)
- Do not hit batteries against hard objects.
- Do not submerge batteries in water.
- Batteries should be inserted with the correct polarity.

## TOOLS REQUIRED

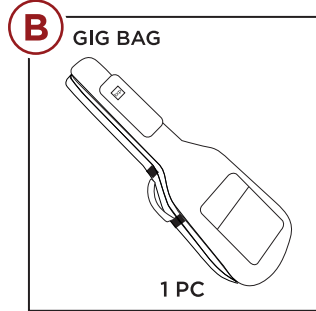
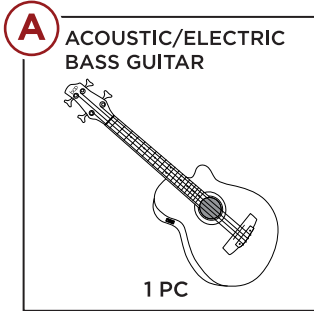


ALLEN WRENCH  
(PROVIDED)



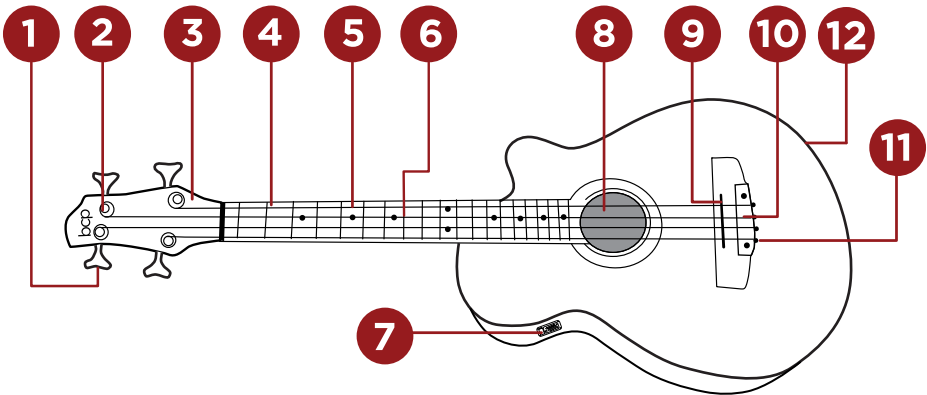
9V BATTERY  
(NOT PROVIDED)

## PARTS



## DIAGRAM

Please retain these instructions for future reference.



- |                    |                       |
|--------------------|-----------------------|
| 1. Tuning Pegs     | 7. Preamp             |
| 2. Tuning Machines | 8. Sound Hole         |
| 3. Headstock/Head  | 9. Saddle             |
| 4. Neck            | 10. Bridge            |
| 5. Strings         | 11. String "Ball End" |
| 6. Frets           | 12. Output Jack       |

## TUNING STRINGS

1. Using an electronic guitar/bass tuner, adjust one tuning peg at a time. Play a single note and check your tuner for accuracy, adjust as necessary until the correct note is achieved.

- Standard Bass tuning is as follows (low to high): E, A, D, G

## PREAMP DIAGRAM

1. Volume
2. Bass
3. Midd
4. Battery Indicator
5. Battery Compartment

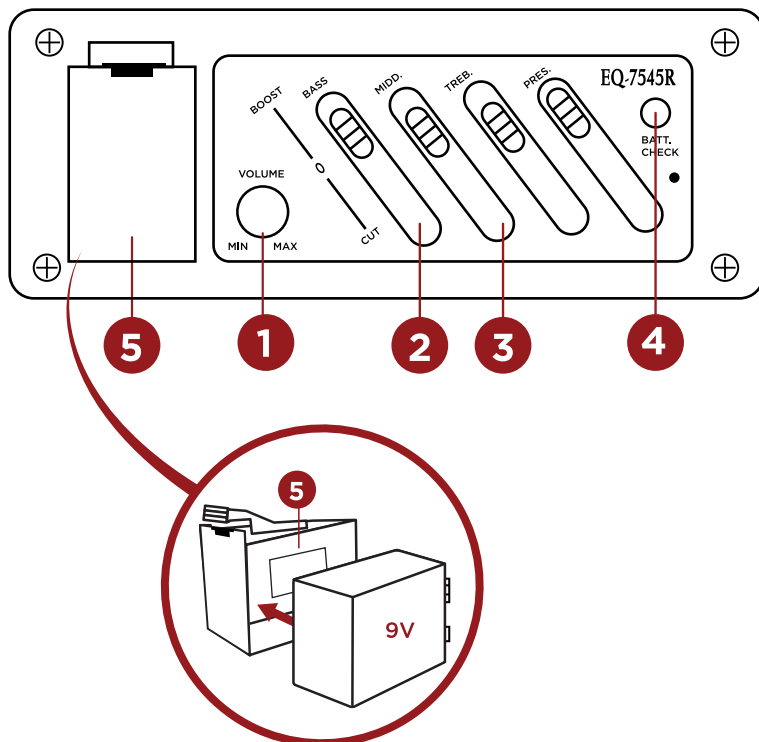
**Volume:** Controls the overall output of the pre-amp unit to the amplifier.

**Bass, Midd, and Treb:** Will boost (increase) or cut (decrease) the corresponding signal ranges coming out of the unit.

**Pres:** Presence control which provides a slight boost to the Middle and Treble frequencies.

**Battery Indicator:** Press the button, the indicator will glow red when the battery is active and supplying power to the preamplifier.

**Battery Compartment:** Insert a 9V Battery to activate the preamplifier features.



## REPLACING STRINGS

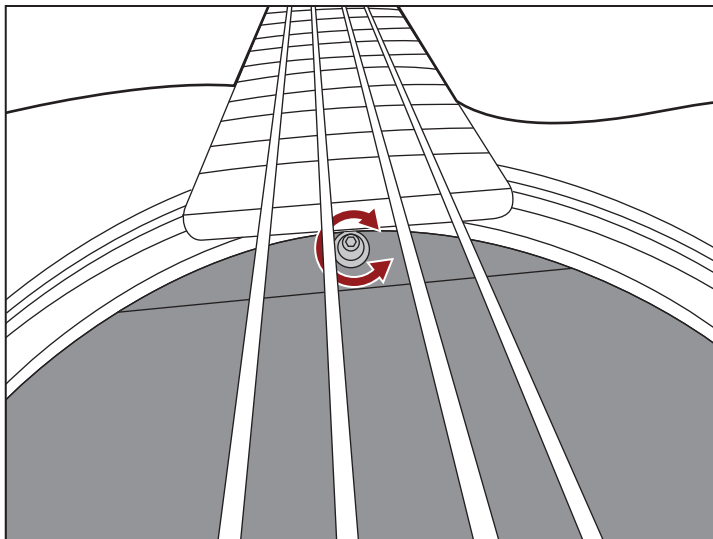
1. Loosen the strings all the way. Strings can then be removed by the “**Ball End**” via the rear of the strings-through the **bridge**. If the end of the string is too twisted to be removed through the bridge, you may cut the ends so they may slide through the hole without issue.
2. Replace the strings by running the “**Plain End**” of the string through the **bridge** until the “**Ball End**” is flat against the back of the **bridge**—then run the “**Plain End**” through the eyelet of the corresponding tuning machine. Pull tight, then retract the string back 2 ½ Inches from the **tuning machine**. This will provide the necessary slack to properly wrap the string around the peg.
3. When wrapping the string:
  - a. For “**E**” & “**A**” Strings: Turn the tuning machine head **Clockwise** (towards the end of the headstock).
  - b. For “**D**” & “**G**” Strings: Turn the tuning machine head Counter-Clockwise (towards the body of the guitar).

Turn until the strings are up to pitch.

4. After strings have been tuned to pitch (see “Tuning Strings” section), carefully stretch and retune each string **at least 3 times** to achieve tuning stability.  
**Note:** The amount of string stretching needed to maintain stability will vary depending on the size, material, and brand of strings.
5. If there is any excess string sticking out from the **tuning machine/peg** you may clip the excess length roughly 1/8 of an inch

## ADJUST NECK TENSION

1. Locate the tension rod on the base of the neck under the strings.
2. Use Allen wrench to loosen/tighten the tension of the guitar neck.



## GUITAR MAINTENANCE & CARE

**Note:** If there are any electrical components on your guitar which you think need to be fixed, please be aware that we recommend taking your guitar to your local music store to fix it.

If you hear any rattling or buzzing noises while playing. Some hardware may be loose. You can tighten any hardware with the appropriate tool.

Dust and other foreign matter can harm the quality of the electrical components. Make sure to regularly clean and maintain your guitar, including around the tuning pegs and bridge. Do not leave your guitar exposed to the elements, and be aware that guitars are sensitive to changes in temperature, humidity, and altitude.

To clean your guitar, use a dry, soft cloth. If desired, guitar polish can be bought from any local music store.



# HELP CENTER



Question about your product? We're here to help. Visit us at:

[help.bestchoiceproducts.com](https://help.bestchoiceproducts.com)



Chat Support



Product Inquiry



Orders FAQ



Product Assembly



Returns & Refunds

## PRODUCT WARRANTY INFORMATION

All items can be returned for any reason within 60 days of the receipt and will receive a full refund as long as the item is returned in its original product packaging and all accessories from its original shipment are included. All returned items will receive a full refund back to the original payment method. All returned items will not be charged a re-stocking fee.

All returned items require an RA (Return Authorization) number, which can only be provided by a Best Choice Products Customer Service Representative when the return request is submitted. Items received without an RA may not be accepted or may increase your return processing time. Once an item has been received by Best Choice Products, refunds or replacements will be processed within 5 business days.

All returns must be shipped back to the Best Choice Products Return Center at the customer's expense. If the reason for return is a result of an error by Best Choice Products then Best Choice Products will provide a pre-paid shipping label via email. Boxes for return shipping will not be provided by Best Choice Products, and is the customer's responsibility to either use the original shipping boxes or purchase new boxes.

Pictures may be required for some returns to ensure an item is not damaged prior to its return. Items returned are not considered undamaged until they are received by Best Choice Products and verified as such. All damages to items are the customer's responsibility until the item has been received by and acknowledge by Best Choice Products as undamaged.

© 2023 Best Choice Products, Inc. All rights reserved. Distributed by Best Choice Products, Inc. Tustin, CA 92780

## WARNING

Manufacturer and seller expressly disclaim any and all liability for personal injury, property damage or loss, whether direct, indirect, or incidental, resulting from the incorrect attachment, improper use, inadequate maintenance, unapproved modification, or neglect of this product.