

Material	Polypropylene (PP)	Closure Type	Continuous Thread (CT)
Size	48-400	Surface Finish	High Polish
Part Weight	3.80 g ± 1.00 g	Torque	19–30 in-lbs

DIMENSIONS

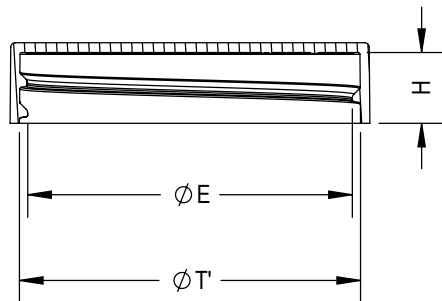
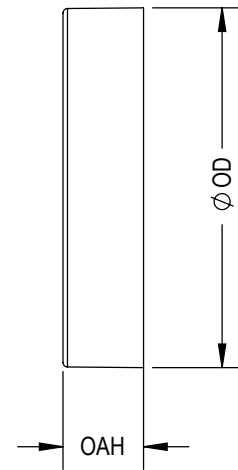
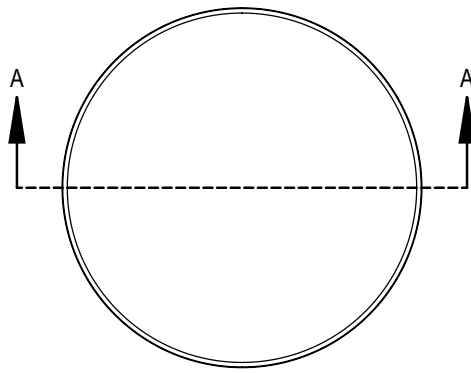
OD	1.980" (50.29 mm)	OAH	0.446" (11.33 mm)
H	0.390" (9.91 mm)	T	1.855" (47.12 mm)
E	1.761" (44.73 mm)		

THREAD / FINISH

Threads per inch	6	Pitch	0.167" (4.24 mm)
Thread Type	Continuous Thread	Neck Finish	48-400
Engagement	~1.25 turns	Seal Surface	Flat Land

TOLERANCE

Standard Tolerance	±0.015 in (±0.38 mm)
--------------------	----------------------



SECTION A-A
SCALE 1 : 1

DISCLAIMER

This specification does not relieve the customer of their ultimate responsibility for the determination of the appropriate container. It is the customer's responsibility to select the appropriate packaging based upon all information at their disposal including the specific application, regulatory compliance, product compatibility and shipping requirements. WE HEREBY DISCLAIM AND EXCLUDE ANY EXPRESS OR IMPLIED WARRANTIES, INCLUDING WITHOUT LIMITATION THE IMPLIED WARRANTIES OF MERCHANTABILITY AND FITNESS FOR A PARTICULAR PURPOSE.

DISTRIBUTED BY:



REF NO.:

DWG-Q1500

DESCRIPTION:

48-400_BLACK_PP_SMOOTH TOP, SMOOTH SIDES CAP_ (025) MRPLN01_PE FOAM 0.35" LINER_@1700/CASE_

Material	Polypropylene (PP)	Closure Type	Continuous Thread (CT)
Size	48-400	Surface Finish	High Polish
Part Weight	3.80 g ± 1.00 g	Torque	19-30 in-lbs

DIMENSIONS

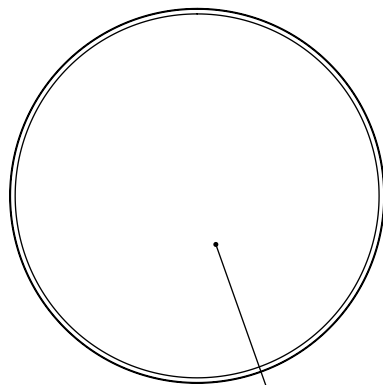
OD	1.980" (50.29 mm)	OAH	0.446" (11.33 mm)
H	0.390" (9.91 mm)	T	1.855" (47.12 mm)
E	1.761" (44.73 mm)		

THREAD / FINISH

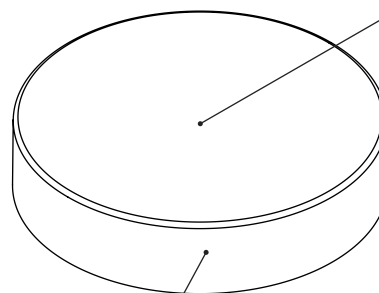
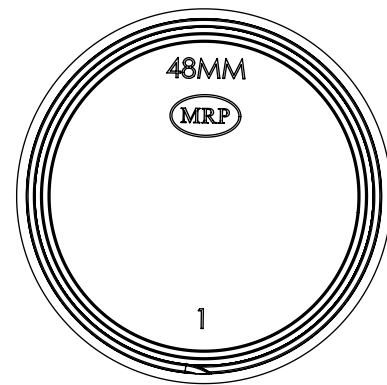
Threads per inch	6	Pitch	0.167" (4.24 mm)
Thread Type	Continuous Thread	Neck Finish	48-400
Engagement	~1.25 turns	Seal Surface	Flat Land

TOLERANCE

Standard Tolerance	±0.015 in (±0.38 mm)
--------------------	----------------------



HIGH POLISH
ALL OUTSIDE
SURFACES



TOP GATE
LOCATION (48004)

SIDE GATE
LOCATION (48001, 48003)

DISCLAIMER

This specification does not relieve the customer of their ultimate responsibility for the determination of the appropriate container. It is the customer's responsibility to select the appropriate packaging based upon all information at their disposal including the specific application, regulatory compliance, product compatibility and shipping requirements. WE HEREBY DISCLAIM AND EXCLUDE ANY EXPRESS OR IMPLIED WARRANTIES, INCLUDING WITHOUT LIMITATION THE IMPLIED WARRANTIES OF MERCHANTABILITY AND FITNESS FOR A PARTICULAR PURPOSE.

DISTRIBUTED BY:



REF NO.:

DWG-Q1500

DESCRIPTION:

48-400_BLACK_PP_SMOOTH TOP, SMOOTH SIDES CAP_ (025) MRPLN01_PE FOAM 0.35" LINER_@1700/CASE_