

RADIANT™



BY
EMSER
TILE™

RADIANT™

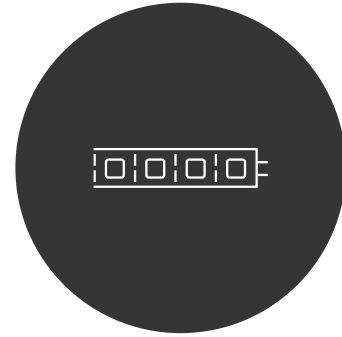
BY EMSER TILE®



**Extruded
Porcelain Tile**



**3 Dimensional
Design**



**Integrated
LED Lighting**

ENHANCED DESIGN. ENHANCED STYLE. ENHANCED IMPACT.

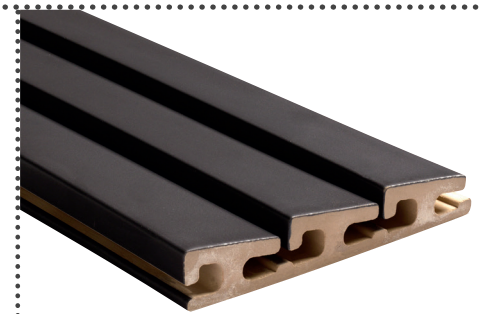
Integrate porcelain tiles with LED lighting to create a stunning and creative look. Emser Tile introduces a new patented system, developed from innovative 3D extruded designs.



PYRAMID
wall tile



STRIES
wall tile



WAVE
wall tile



PEARL
floor tile



GRAY
floor tile



MOON
floor tile



SAND
floor tile



BEACH
floor tile



OAK
floor tile



“Porcelain and light come together in a new decorative tile that is sure to elevate any space.”

The extrusion process of the Radiant series provides numerous technological advantages.



DURABLE AND
LONG-LASTING



EASY CLEANING
AND MAINTENANCE



HYGIENIC AND
HYPOALLERGENIC



NO VOCS



ENVIRONMENTALLY
FRIENDLY



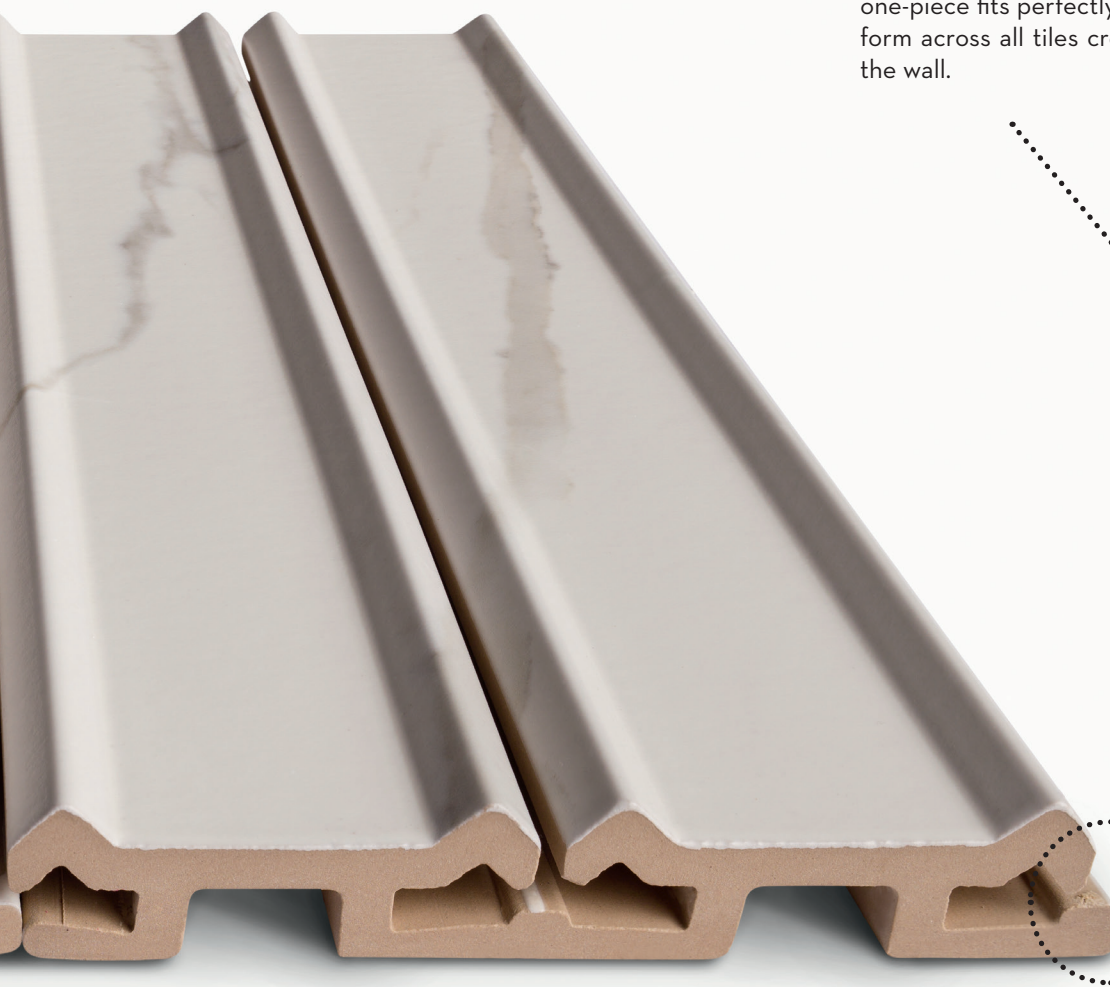
FIREPROOF

EXTRUDED
PORCELAIN TILE

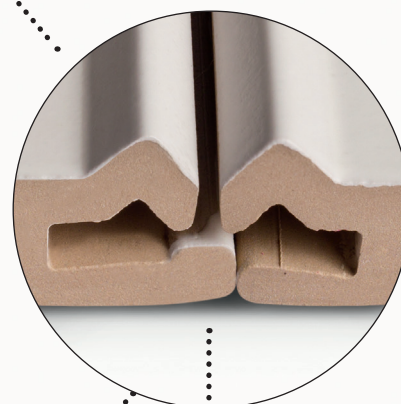
≤ 10mm. [



- The flexible LED strips are inserted into the channels of the porcelain tiles by means of a guide or tool that helps bring the strip to the desired position.
- The LED strip must be waterproof (IP68) if using in a wet application.
- W-Series RGB Color Changing Flexible LED Strip Light - Ultra Bright by Aspect LED recommended.
- LED strip should be a maximum of 10mm width.
- The LED strip can be single color or RGB.
- EMSER TILE does not supply LED lights.
- Installation by an electrician is recommended.



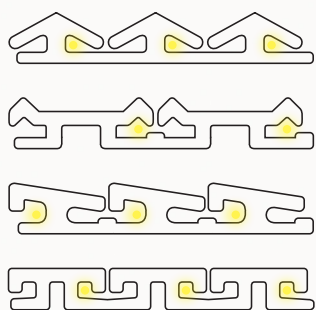
All models have a nosing (bulge) on one of their larger sides so one-piece fits perfectly with the next. The LED output will be uniform across all tiles creating an infinity effect of light throughout the wall.



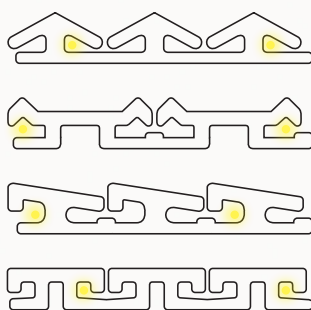
*Recommended joint of 1/16" between pieces.

Different levels of light intensity can be achieved based on the number of lights inserted in the tile:

MORE INTENSITY

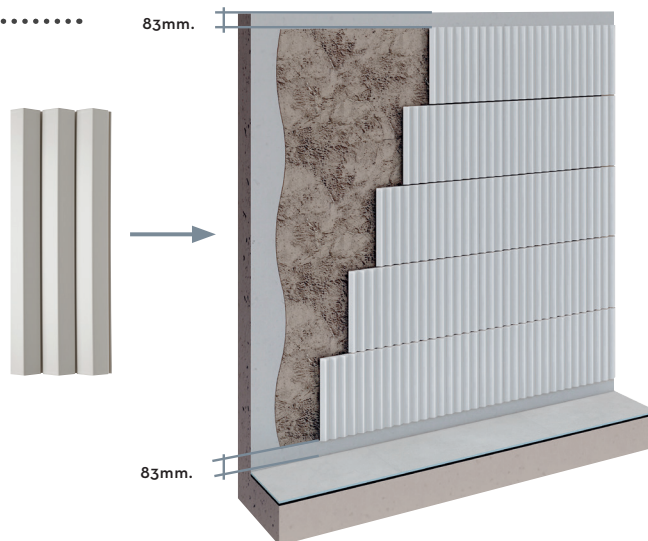


LESS INTENSITY



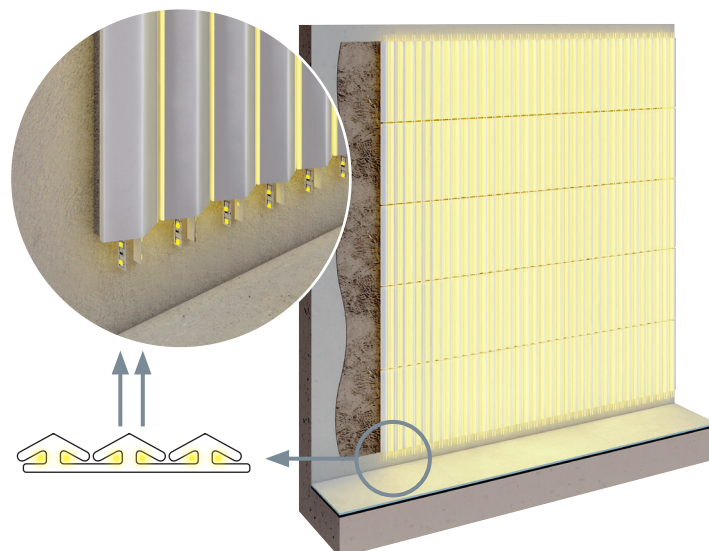
Step 1. Install the tiles as you would with any other tile.

- Ensure the backer board or substrate is consistent, clean and dry.
- Clean the surface of dust and other residues.
- Repair any damaged area.
- Begin installing the mortar over the substrate in small areas (maximum 2m²) with a toothed trowel to regulate the thickness.
- Place the tiles over the mortar and move them up and down ensuring the mortar has spread evenly.
- For the best results, we do not recommend installing the tile in an offset/brick look.



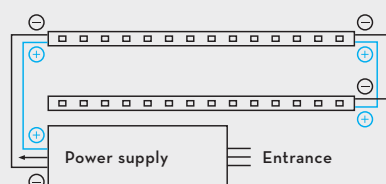
Step 2. Install the LED strips.

- Begin adding the flexible LED strips into the channels of the tiles using a guide or tool until the strips are in the desired position.
- The space that will be above and below the strips will allow for easier connections.
- The type of electrical installation that will be required depends on the type of LED strip used, the length being covered, as well as the working voltage of the LEDs. Based on these factors, select either **SERIAL**, **PARALLEL** or **MIXED** connection, as appropriate for the installation.



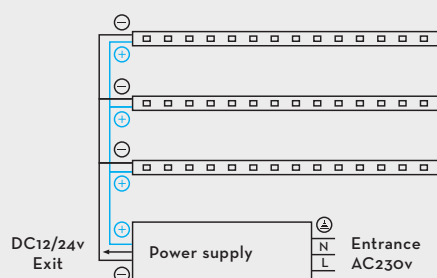
SERIAL CONNECTION

The LED strips are electrically joined one after the other. The end of one strip feeds the beginning of another. The installation of the strip on the tile can be done in zigzag, the strip as it leaves one channel re-enters through the next. This connection is recommended when there are a few meters to cover.



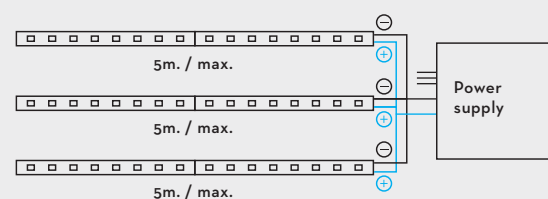
PARALLEL CONNECTION

This type of connection is used to cover long areas or when the sum of the LED strips is higher than recommended by the manufacturer. The connection of all the strips is done on one side. The length of each strip shall not exceed that recommended by the manufacturer.



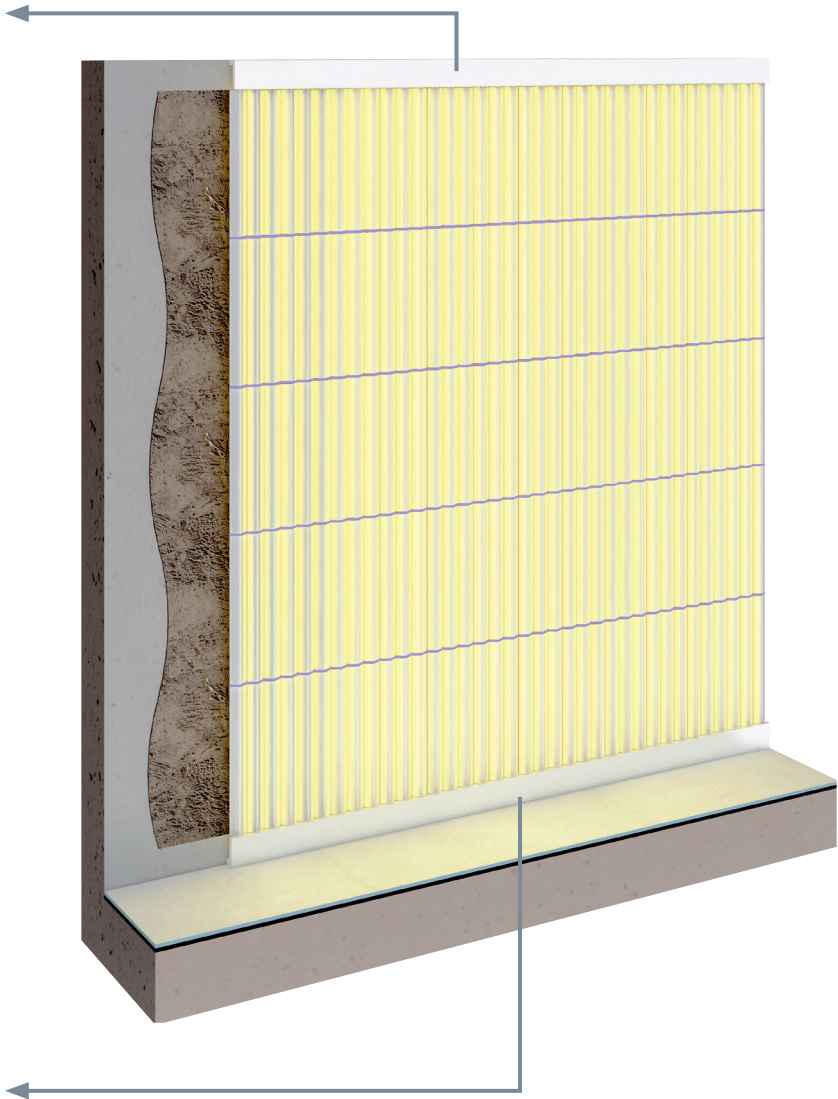
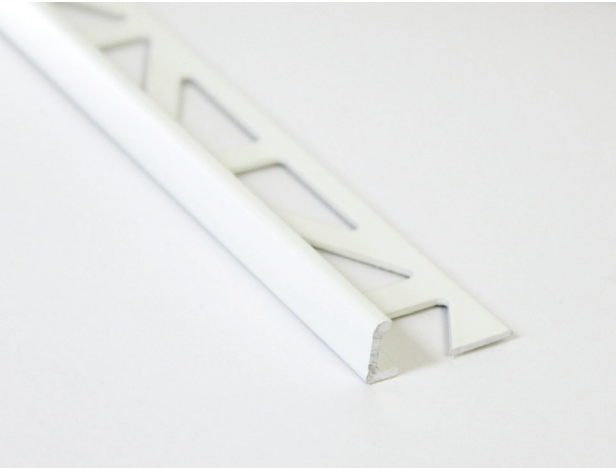
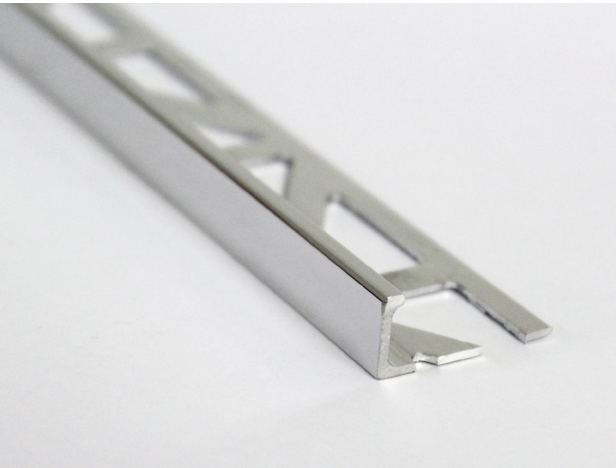
MIXED CONNECTION

This type of connection is recommended for large lengths and large areas that require it. The strips are connected in parallel and these in turn in series. It is necessary not to exceed the maximum power or the lengths recommended by the manufacturer, to avoid voltage drops and low light intensity in the final sections.



Step 3. Trim Recommendation.

- For a cohesive finish, and to hide any lighting components, we recommend using an accent piece from our Signature Series in the corresponding color to complement the Radiant Wall Tile. For a more customized look, a valance or specialty trim molding can be created using waterjet technology. Please consult your Emser representative for additional details and assistance with selection.



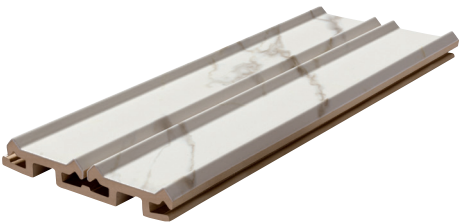
wall tile



RADIANT™



STRIES
CALACATTA



6"x16"

*Waterproof LED required.

EXTRUDED
PORCELAIN TILE

WALL TILE:
STRIES CALACATTA 6"x16"



White Light LED Strip

PYRAMID WHITE



6"x16"

EXTRUDED PORCELAIN TILE

WALL TILE:
PYRAMID WHITE 6"x16"



Blue Light LED Strip





RADIANT™

wall tile



RADIANT™



WAVE
BLACK



6"x16"

EXTRUDED
PORCELAIN TILE

WALL TILE:
WAVE BLACK 6"x16"



Green Light LED Strip



PEARL



GRAY



MOON



SAND



BEACH



OAK



FLOOR SIZES
PORCELAIN TILE



Magenta Light LED Strip



8"x18"
7.87"x17.72"



8"x35"
7.87"x35.43"



8"x45" Solid Floor
Stair Tread & Pool Coping



8"x18"
Angle Trim
7.87"x17.72"



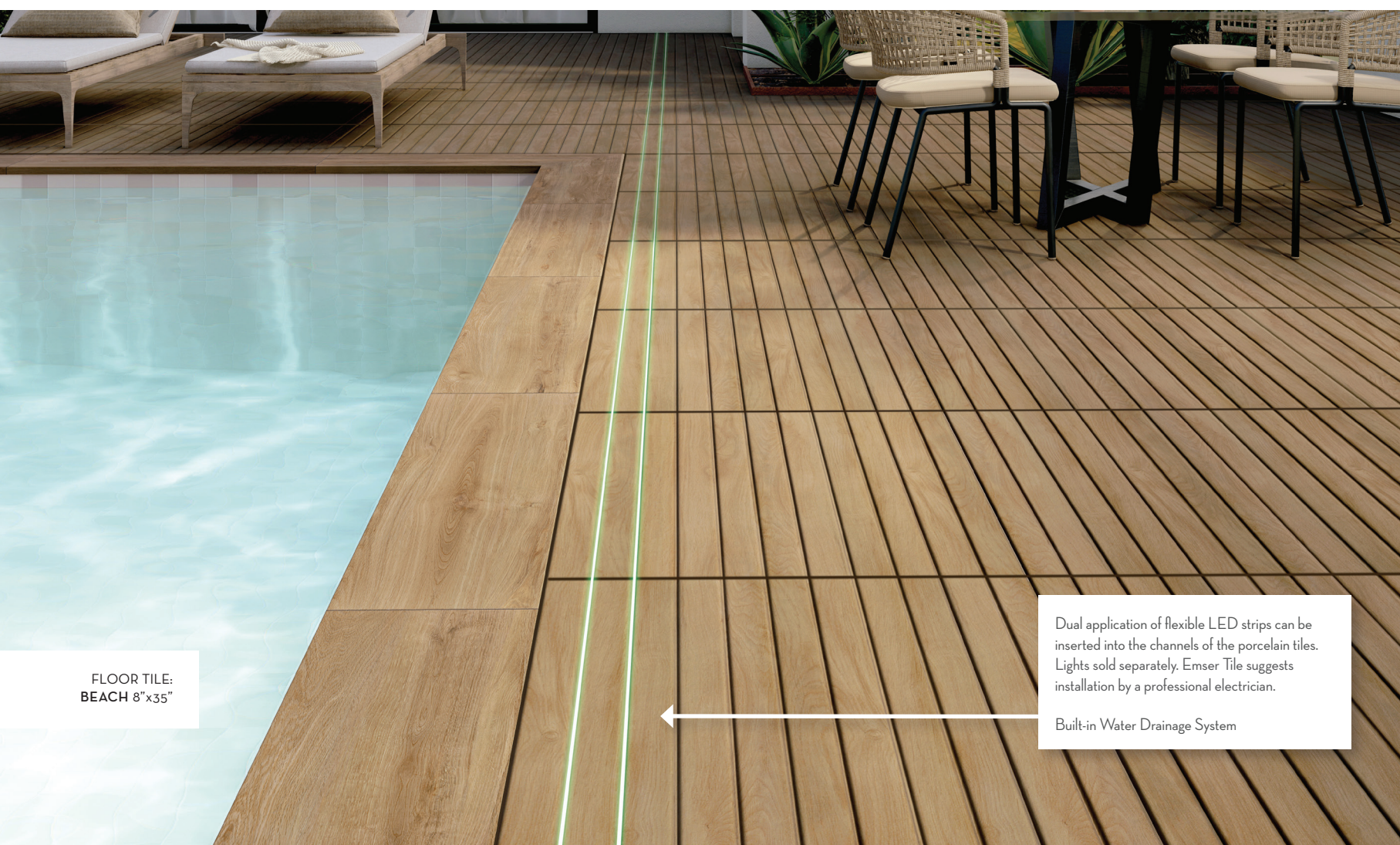
8"x35"
Angle Trim
7.87"x35.43"



3"x8"
Triangular Trim
2.56"x7.87"



FLOOR TILE:
PEARL 8"x35"



FLOOR TILE:
BEACH 8"x35"

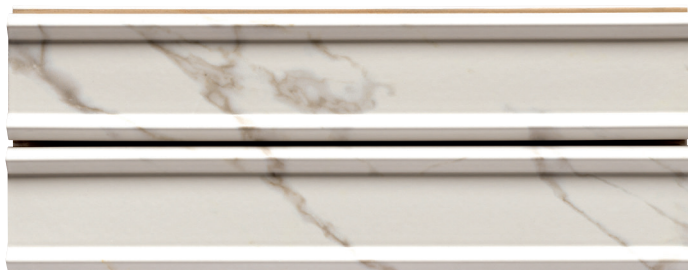
Dual application of flexible LED strips can be inserted into the channels of the porcelain tiles. Lights sold separately. Emser Tile suggests installation by a professional electrician.

Built-in Water Drainage System

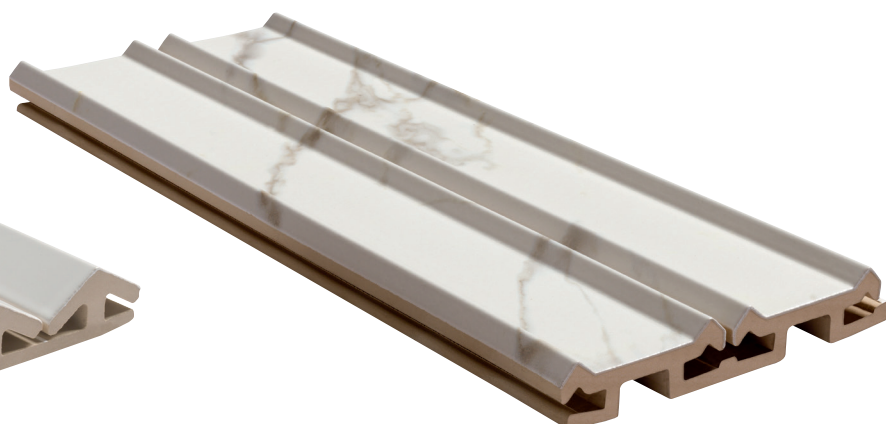
EXTRUDED PORCELAIN TILE



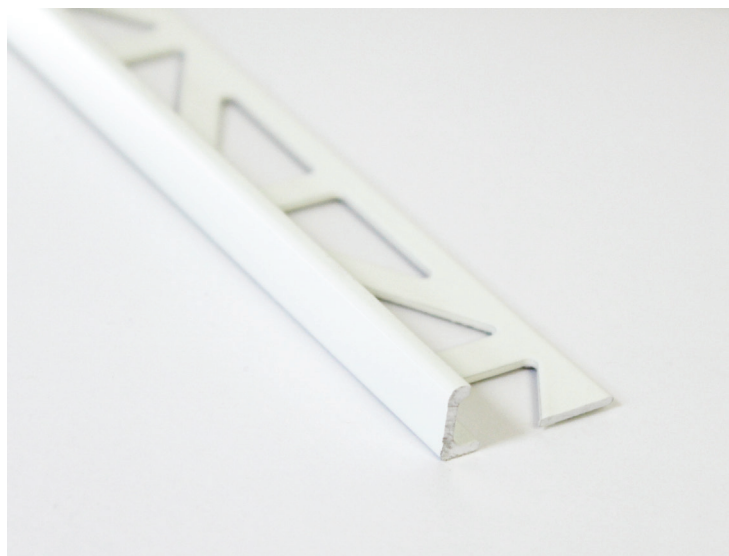
PYRAMID WHITE
6" x 16"



STRIES CALACATA
6" x 16"



TRIM



EXTRUDED
PORCELAIN TILE



WALL TILE



STAIN & CHEMICAL
RESISTANCE



MATTE FINISH



EASY TO CLEAN



WAVE BLACK
6" x 16"



PACKING

	SIZE	PCS/BOX	SQM	BOX/PLT	WEIGHT/BOX	WEIGHT/PLT
PYRAMID	6" x 16"	7	0.43	60	15	900
WAVE	6" x 16"	6	0.37	60	13.5	810
STRIES	6" x 16"	7	0.43	60	13	780





FLOOR TILE:
BEACH 8" x 35"





FLOOR TILE:
SAND 8"x18"

RADIANT™
BY EMSER TILE®

 **Emser Tile®**
www.emser.com