

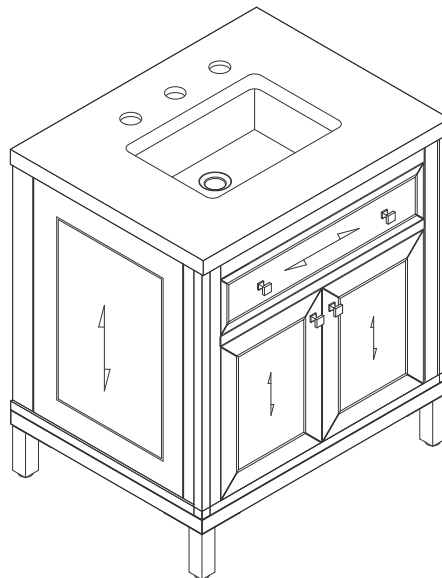
# 30" CHICAGO VANITY

503-V30-GW

503-V30-SC

503-V30-WLW

**JAMES MARTIN**  
VANITIES



## Features and Materials

Solids: Poplar

Veneers: Poplar

Panels: Plywood

Installation Type: Floor Standing with Legs or Wall Mounted

Number of Basins: One, with Optional 3cm Top

Vanity Top Included: No, Optional 3cm Tops Available with Sinks

Overflow: Yes, Front Facing

Number of Doors: Two

Number of Tip Outs: One

Assembly Type: Installation of Legs and Optional 3cm Top

Assembly Type: Remove Legs to Wall Hang (hardware included)

Hardware Material and Finish: GW/SC - Antimony in Champagne

Brass; WLW- Antimony in Satin Nickel

Fits Drain Hole Size: 1 3/4"

European Soft Close Hinges

Adjustable Levelers

## Dimension

Width: 29-7/8"

Depth: 23-1/4"

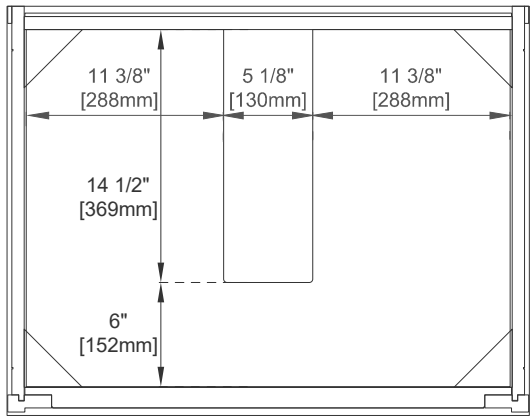
Height: 32-3/8"

Rough-In Height: 21"

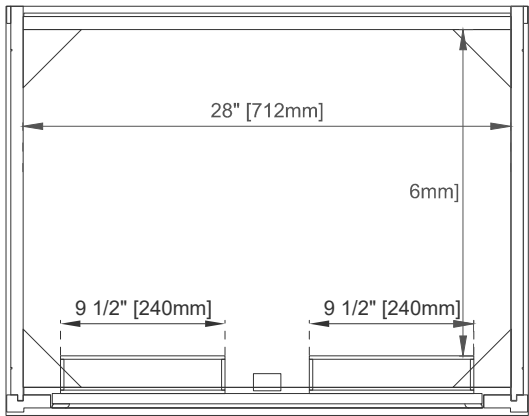
# 30" CHICAGO VANITY

503-V30-GW  
503-V30-SC  
503-V30-WLW

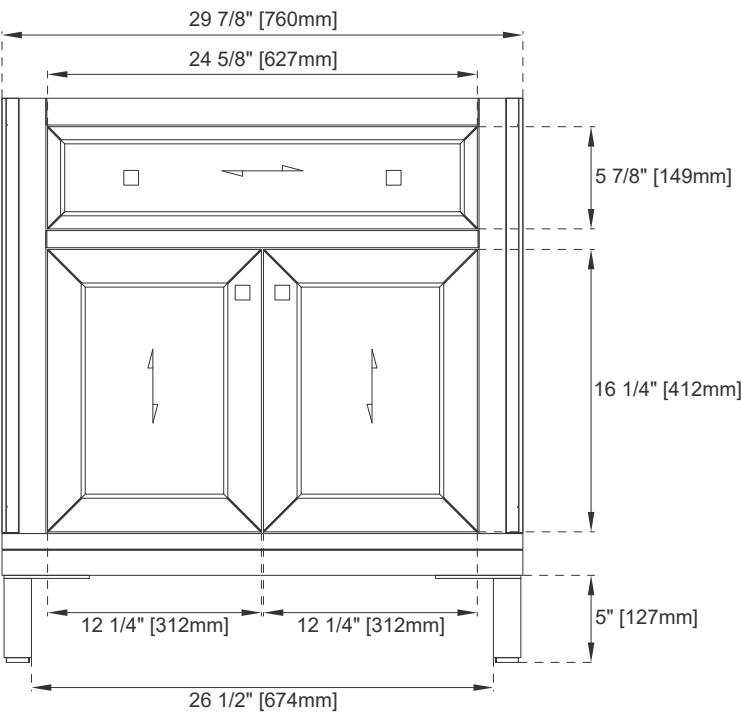
JAMES MARTIN  
VANITIES



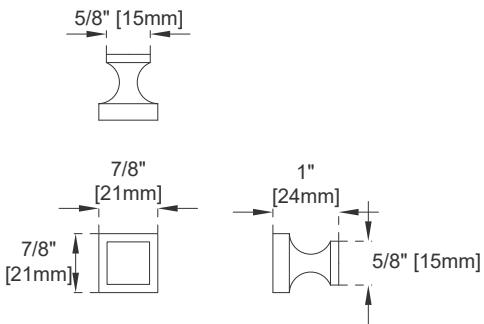
Top View 2



Top View 1



Front View



Knob

All dimensions are nominal  
Diagrams are of cabinet only—James Martin Optional Countertops and sinks are not shown

Visit website for warranty and installation information  
[www.jamesmartinvanities.com](http://www.jamesmartinvanities.com)

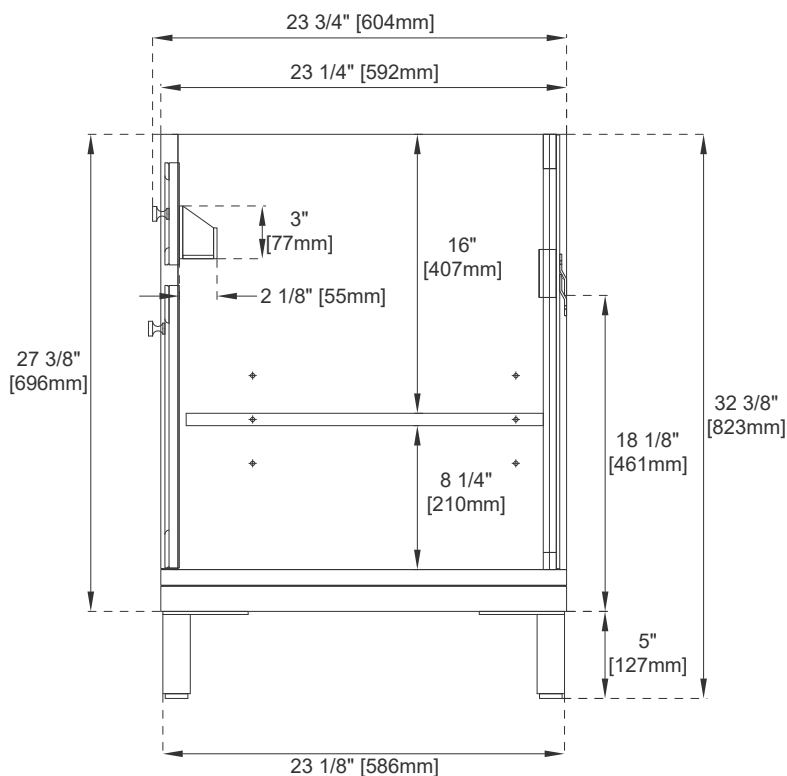
# 30" CHICAGO VANITY

503-V30-GW

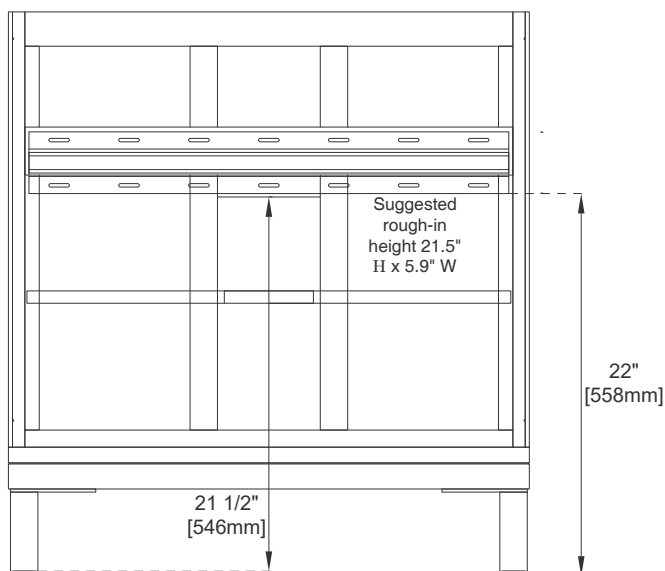
503-V30-SC

503-V30-WLW

JAMES MARTIN  
VANITIES



Side View



Back View

All dimensions are nominal

Diagrams are of cabinet only—James Martin Optional Countertops and sinks are not shown

Visit website for warranty and installation information  
[www.jamesmartinvanities.com](http://www.jamesmartinvanities.com)