

CAT900106

**paulin**<sup>®</sup>

# RODS & SHAPES

[shop.hillmangroup.ca](http://shop.hillmangroup.ca)

**ROUND, SQUARE & ANGLE  
STEEL, STAINLESS STEEL  
ALUMINUM  
SHEETS  
And more...**

**HILLMAN**<sup>™</sup>

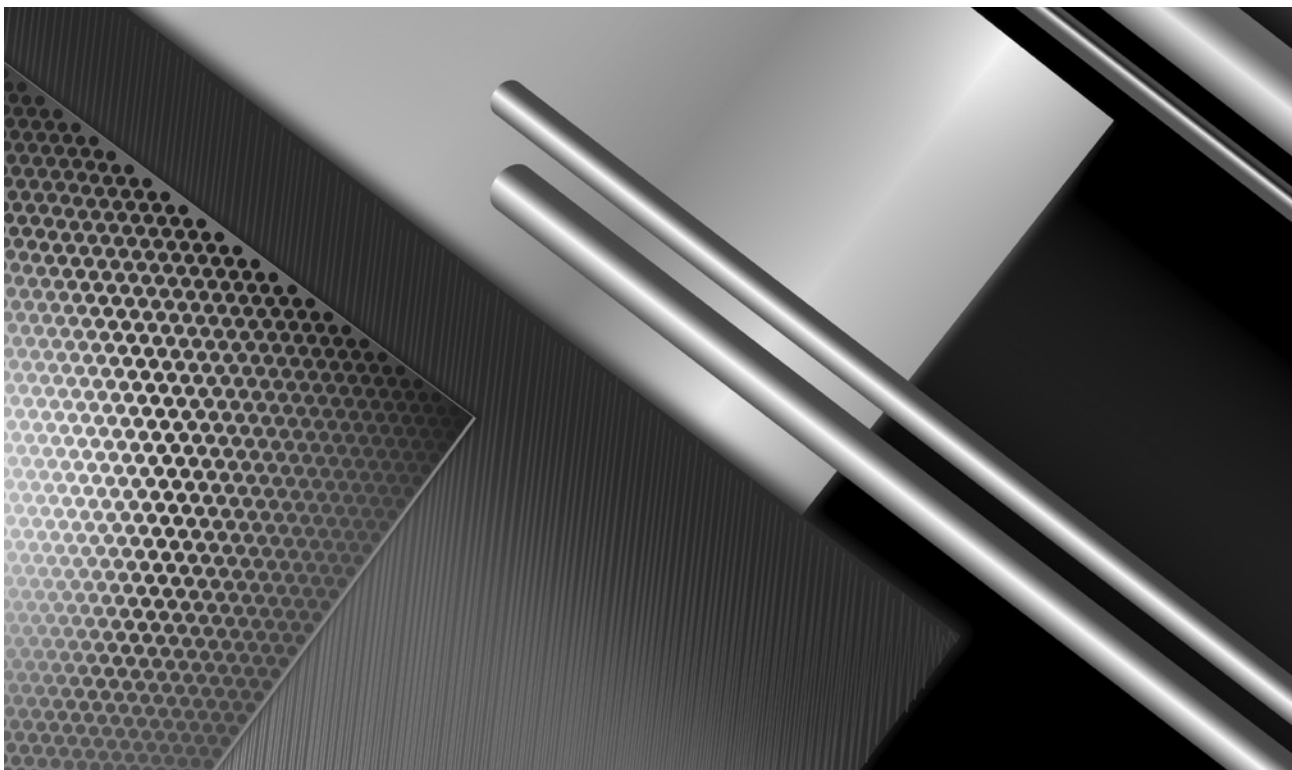


At The Hillman Group, we stock a comprehensive range of standard and non-standard fasteners, hardware, fittings, fluid flow components and fittings, automotive products under our Hillman, Paulin, Papco, Dominion, and Pro-Tip family of brands. Our range of products are complimented by our ability to source any item in the required size and material for any type of project. Let us help standardize your range of products or create new programs with the help from our dynamic and vibrant organization. For over 100 years, the Paulin® brand has been recognized as an industry leader. Our customers are retailers, original equipment manufacturers, industrial and automotive aftermarket distributors, and plumbing and gas wholesalers.

The Hillman Group has been a customer-first organization that built a loyal customer base centred on trust, dedication and long-lasting relationships. Paulin® being the First In Fasteners, we look forward to being The Right Fastening Choice for you.

Our five strategically situated warehouses in Vancouver, Edmonton, Winnipeg, Toronto and Montreal are conveniently located to provide courteous service to all of our customers.

The items listed in our catalogue are a representation of the products available and stocked in our distribution network. Our availability may not represent all sizes available or certain applications required. Please contact your local Hillman customer service or sales representative for additional product inquiries. Our knowledgeable staff will provide you with information and solutions that are both cost effective and reliable.



# **paulin**® RODS AND SHAPES

<b>TABLE OF CONTENTS</b>	<b>PAGE</b>
Threaded Rods.....	<b>4-11</b>
Papcolloy High Strength Rods .....	<b>8</b>
Metric Threaded Rods.....	<b>12-14</b>
Hex Coupling Nuts .....	<b>15</b>
Round Rods .....	<b>16-17</b>
Round Tubing .....	<b>17</b>
Square Rods .....	<b>18</b>
Square Tubing .....	<b>19</b>
Angles Stock.....	<b>20-21</b>
Track Set.....	<b>21</b>
Flat Stock.....	<b>22-23</b>
Sheet Metal .....	<b>24-25</b>
Corner Gussets.....	<b>26</b>
Safety Caps .....	<b>27</b>

---

**141**  
Series

**PAULIN**™ **THREADED RODS**



PART CLASS #  
**811AG**

**STEEL RODS** are great for hangers, anchor bolts, U-bolts, and clamps. Rods with a zinc plated finish provide a clean and bright look. Electroplating zinc also protects against rust. Do not weld electroplated products.

**D** = Diameter                      **L** = Length

**ORDER BY ITEM (PACKAGE) NUMBER**  
**UNC Coarse Thread**

<b>BARE METAL (PLAIN) 12" LENGTHS</b>			
Diameter x Length	Approx. Weight (lb) /100 pcs	Part #	Qty
6-32 X 12	3.500	<b>141-200</b>	1
8-32 X 12	5.000	<b>141-201</b>	1
10-24 X 12	7.000	<b>141-203</b>	1
7/16-14 X 12	30.000	<b>141-210</b>	1
5/8-11 X 12	70.000	<b>141-214</b>	1
3/4-10 X 12	100.000	<b>141-215</b>	1

<b>BARE METAL (PLAIN) 36" LENGTHS</b>			
Diameter x Length	Approx. Weight (lb) /100 pcs	Part #	Qty
6-32 X 36	19.000	141-216	1
8-32 X 36	24.000	<b>141-218</b>	1

<b>ZINC PLATED 12" LENGTHS</b>			
Diameter x Length	Approx. Weight (lb) /100 pcs	Part #	Qty
1/4-20 X 12	10.000	<b>141-204</b>	1
5/16-18 X 12	10.000	<b>141-206</b>	1
3/8-16 X 12	20.000	<b>141-208</b>	1
1/2-13 X 12	40.000	<b>141-212</b>	1

**UNF Fine Thread**

<b>BARE METAL (PLAIN) 36" LENGTHS</b>			
Diameter x Length	Approx. Weight (lb) /100 pcs	Part #	Qty
1/4-28 X 36	36.000	141-224	1
5/16-24 X 36	59.000	141-226	1
3/8-24 X 36	88.000	141-228	1
7/16-20 X 36	120.000	<b>141-230</b>	1
1/2-20 X 36	159.000	<b>141-232</b>	1
5/8-18 X 36	253.000	<b>141-234</b>	1
3/4-16 X 36	370.000	<b>141-236</b>	1
7/8-14 X 36	511.000	141-238	1
1-14 X 36	668.000	141-240	1



**141-201**



**141-206**

Stock items are shown in **HEAVY** type.

**141**  
Series

# PAULIN<sup>®</sup> THREADED RODS



PART CLASS #  
**811AG**

**D** = Diameter      **L** = Length

**ORDER BY ITEM (PACKAGE) NUMBER**

**UNC Coarse Thread**

ZINC PLATED 36" LENGTHS			
Diameter x Length	Approx. Weight (lb) /100 pcs	Part #	Qty
6/32 X 36	19.000	<b>141-306</b>	1
8/32 X 36	24.000	141-308	1
10-24 X 36	30.000	<b>141-310</b>	1
1/4-20 X 36	34.000	<b>141-314</b>	1
5/16-18 X 36	53.000	<b>141-316</b>	1
3/8-16 X 36	76.000	<b>141-318</b>	1
7/16-14 X 36	120.000	<b>141-320</b>	1
1/2-13 X 36	151.000	<b>141-322</b>	1
5/8-11 X 36	226.000	<b>141-324</b>	1
3/4-10 X 36	333.000	<b>141-326</b>	1
7/8-9 X 36	465.000	<b>141-328</b>	1
1-8 X 36	614.500	<b>141-330</b>	1
1-1/4-7 X 36	1068.000	141-334	1

**UNF Fine Thread**

ZINC PLATED 36" LENGTHS			
Diameter x Length	Approx. Weight (lb) /100 pcs	Part #	Qty
10-32 X 36	30.000	141-311	1

BARE METAL (PLAIN) 36" LENGTHS			
Diameter x Length	Approx. Weight (lb) /100 pcs	Part #	Qty
10-32 X 36	20.000	<b>141-351</b>	1

BARE METAL (PLAIN) 36" LENGTHS			
Diameter x Length	Approx. Weight (lb) /100 pcs	Part #	Qty
10-24 X 36	21.000	<b>141-350</b>	1
1/4-20 X 36	34.000	<b>141-354</b>	1
5/16-18 X 36	53.000	<b>141-356</b>	1
3/8-16 X 36	1500.000	<b>141-358</b>	1
7/16-14 X 36	120.000	<b>141-360</b>	1
1/2-13 X 36	1500.000	<b>141-362</b>	1
5/8-11 X 36	226.000	<b>141-364</b>	1
3/4-10 X 36	333.000	<b>141-366</b>	1
7/8-9 X 36	386.000	<b>141-368</b>	1
1-8 X 36	800.000	<b>141-370</b>	1
1-1/8-7 X 36	846.000	141-372	1
1-1/4-7 X 36	1068.000	<b>141-374</b>	1
1-1/2-6 X 36	1545.000	<b>141-378</b>	1

BARE METAL (PLAIN) 72" LENGTHS			
Diameter Inches	Approx. Weight (lb) /100 pcs	Part #	Qty
5/8-11 X 72	450.000	<b>141-424</b>	1



**141-318**



**141-358**

Stock items are shown in **HEAVY** type.

**141**  
Series

**Paulin**™ **THREADED RODS**



PART CLASS #  
**811AG**

**D** = Diameter      **L** = Length

ORDER BY ITEM (PACKAGE) NUMBER

**UNC Coarse Thread**

<b>BARE METAL (PLAIN) 120" LENGTHS</b>			
Diameter x Length	Approx. Weight (lb) /100 pcs	Part #	Qty
1/4-20 X 120	120.000	<b>141-454</b>	1
5/16-18 X 120	200.000	141-456	1
3/8-16 X 120	290.000	<b>141-458</b>	1
7/16-14 X 120	400.000	141-460	1
1/2-13 X 120	530.000	<b>141-462</b>	1
5/8-11 X 120	840.000	<b>141-464</b>	1
3/4-10 X 120	1230.000	<b>141-466</b>	1
7/8-9 X 120	1700.000	<b>141-468</b>	1
1-8 X 120	2230.000	<b>141-470</b>	1
1-1/8-7 X 120	2820.000	<b>141-472</b>	1
1-1/4-7 X 120	3560.000	<b>141-474</b>	1
1-1/2-6 X 120	5150.000	141-478	1



**141-454**

<b>BARE METAL (PLAIN) 144" LENGTHS</b>			
Diameter x Length	Approx. Weight (lb) /100 pcs	Part #	Qty
1/4-20 X 144	—	141-514	1
5/16-18 X 144	240.000	141-516	1
3/8-16 X 144	340.000	141-518	1
7/16-14 X 144	480.000	<b>141-520</b>	1
1/2-13 X 144	640.000	<b>141-522</b>	1
5/8-11 X 144	1000.000	<b>141-524</b>	1
3/4-10 X 144	1480.000	<b>141-526</b>	1
7/8-9 X 144	2033.000	141-528	1
1-8 X 144	2666.000	<b>141-530</b>	1
1-1/4-7 X 144	4200.000	141-534	1

Stock items are shown in **HEAVY** type.

**141**  
Series

# PAULIN<sup>®</sup> THREADED RODS

PART CLASS #  
811AG



D = Diameter

L = Length

ORDER BY ITEM (PACKAGE) NUMBER

UNC Coarse Thread

ZINC PLATED 72" LENGTHS			
Diameter x Length	Approx. Weight (lb) /100 pcs	Part #	Qty
1/4-20 X 72	28.000	<b>141-614</b>	1
5/16-18 X 72	47.000	<b>141-616</b>	1
3/8-16 X 72	69.000	<b>141-618</b>	1
1/2-13 X 72	131.000	<b>141-622</b>	1
5/8-11 X 72	198.000	<b>141-624</b>	1

ZINC PLATED 120" LENGTHS			
Diameter x Length	Approx. Weight (lb) /100 pcs	Part #	Qty
1/4-20 X 120	120.000	<b>141-480</b>	1
5/16-18 X 120	200.000	<b>141-482</b>	1
3/8-16 X 120	293.000	<b>141-484</b>	1
7/16-14 X 120	400.000	141-486	1
1/2-13 X 120	530.000	<b>141-488</b>	1
5/8-11 X 120	840.000	<b>141-490</b>	1
3/4-10 X 120	1240.000	<b>141-492</b>	1
7/8-9 X 120	1700.000	<b>141-494</b>	1
1-8 X 120	2233.000	<b>141-496</b>	1



**141-614**

Stock items are shown in **HEAVY** type.

**141**  
Series

**paulin** PAPCOLLOY HIGH STRENGTH RODS



PART CLASS #  
**811AH**

**HIGH STRENGTH B7 STEEL THREADED RODS** are to ASTM A-193 B7 specification. Used for vehicles, construction, mining, chemical and petroleum equipment. Heat treated and made from chrome-moly steel, tensile strength exceeds 125,000 p.s.i. Temperature service range from -150°F to +850°F.

**D** = Diameter      **L** = Length

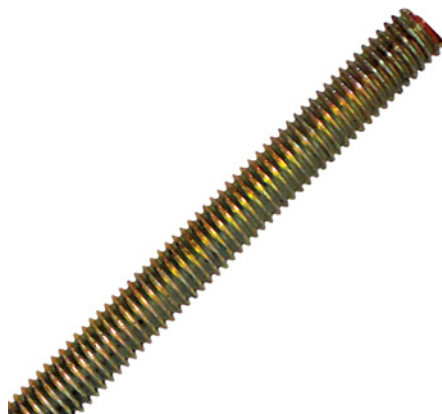
**ORDER BY ITEM (PACKAGE) NUMBER**

**UNC Coarse Thread**

YELLOW ZINC DICHROMATE 3 FT			
Diameter x Length	Approx. Weight (lb) /100 pcs	Part #	Qty
1/4-20 X 36	36.000	<b>141-550</b>	1
5/16-18 X 36	60.000	<b>141-551</b>	1
3/8-16 X 36	86.000	<b>141-552</b>	1
7/16-14 X 36	117.000	<b>141-553</b>	1
1/2-13 X 36	152.500	<b>141-554</b>	1
9/16-12 X 36	192.500	<b>141-555</b>	1
5/8-11 X 36	241.500	<b>141-556</b>	1
3/4-10 X 36	351.500	<b>141-557</b>	1
7/8-9 X 36	490.000	<b>141-558</b>	1
1-8 X 36	641.500	<b>141-559</b>	1
1-1/8-7 X 36	812.000	<b>141-561</b>	1
1-1/4-7 X 36	1035.000	<b>141-563</b>	1
1-1/2-6 X 36	1536.000	<b>141-565</b>	1

**UNF Fine Thread**

YELLOW ZINC DICHROMATE 3 FT			
Diameter x Length	Approx. Weight (lb) /100 pcs	Part #	Qty
1/4-28 X 36	39.500	141-570	1
5/16-24 X 36	62.000	<b>141-571</b>	1
3/8-24 X 36	88.000	<b>141-572</b>	1
7/16-20 X 36	120.000	<b>141-573</b>	1
1/2-20 X 36	166.000	<b>141-574</b>	1
5/8-18 X 36	262.500	<b>141-576</b>	1
3/4-16 X 36	390.500	<b>141-577</b>	1
7/8-14 X 36	529.000	<b>141-578</b>	1
1-14 X 36	698.500	<b>141-579</b>	1
1-1/8-12 X 36	880.000	<b>141-580</b>	1
1-1/4-12 X 36	1060.000	<b>141-581</b>	1
1-1/2-12 X 36	1620.000	<b>141-582</b>	1



**141-550**

Stock items are shown in **HEAVY** type.



**5091**  
Series

**paulin** THREADED RODS



PART CLASS #  
811AK

**18.8 STAINLESS STEEL THREADED RODS** are corrosion resistance. Used for vehicles, construction, mining, chemical and petroleum equipment.

D = Diameter

L = Length

ORDER BY ITEM (PACKAGE) NUMBER

UNC Coarse Thread

18.8 STAINLESS STEEL 3 FT			
Diameter x Length	Approx. Weight (lb) /100 pcs	Part #	Qty
4-40 X 36	16.000	5091-304	1
6-32 X 36	20.000	5091-306	1
8-32 X 36	15.000	5091-308	1
10-24 X 36	34.000	<b>5091-310</b>	1
1/4-20 X 36	34.000	<b>5091-314</b>	1
5/16-18 X 36	55.000	<b>5091-316</b>	1
3/8-16 X 36	84.000	<b>5091-318</b>	1
7/16-14 X 36	112.500	<b>5091-320</b>	1
1/2-13 X 36	152.500	<b>5091-322</b>	1
5/8-11 X 36	252.000	<b>5091-324</b>	1
3/4-10 X 36	390.000	<b>5091-326</b>	1
7/8-9 X 36	496.500	5091-328	1
1-8 X 36	654.000	<b>5091-330</b>	1

UNF Fine Thread

18.8 STAINLESS STEEL 3 FT			
Diameter x Length	Approx. Weight (lb) /100 pcs	Part #	Qty
10-32 X 36	30.000	5091-311	1
1/4-28 X 36	50.000	5091-514	1
5/16-24 X 36	75.000	<b>5091-516</b>	1
3/8-24 X 36	110.000	<b>5091-518</b>	1
1/2-20 X 36	50.000	<b>5091-522</b>	1

18.8 STAINLESS STEEL 6 FT			
Diameter x Length	Approx. Weight (lb) /100 pcs	Part #	Qty
1/4-20 X 72	68.000	5091-354	1
5/16-18 X 72	111.000	<b>5091-356</b>	1
3/8-16 X 72	169.000	<b>5091-358</b>	1
1/2-13 X 72	309.000	<b>5091-362</b>	1
5/8-11 X 72	489.500	<b>5091-364</b>	1
3/4-10 X 72	709.500	<b>5091-366</b>	1
7/8-9 X 72	1025.000	5091-368	1
1-8 X 72	1305.000	5091-370	1



**5091-314**

Stock items are shown in **HEAVY** type.

**5291**  
Series

**Paulin**™ **THREADED RODS**



PART CLASS #  
811AL

**316 STAINLESS STEEL THREADED RODS** are corrosion resistance. 316 stainless steel has higher corrosion resistance than 18-8 stainless steel. They are an excellent choice for applications in salt-water and chlorine environments. Can also be used for vehicles, construction, mining, chemical and petroleum equipment.

D = Diameter

L = Length

ORDER BY ITEM (PACKAGE) NUMBER

UNC Coarse Thread

316 STAINLESS STEEL 6 FT			
Diameter x Length	Approx. Weight (lb) /100 pcs	Part #	Qty
1/4-20 X 72	68.500	5291-354	1
5/16-18 X 72	111.000	5291-356	1
3/8-16 X 72	169.500	5291-358	1
1/2-13 X 72	309.000	<b>5291-362</b>	1
5/8-11 X 72	489.000	<b>5291-364</b>	1
3/4-10 X 72	709.500	<b>5291-366</b>	1
7/8-9 X 72	1060.000	<b>5291-368</b>	1
1-8 X 72	1311.000	5291-370	1



**5291-358**

Stock items are shown in **HEAVY** type.

**5691**  
Series

## PAULIN<sup>®</sup> THREADED RODS

PART CLASS #  
811AM



**BRASS OIL FINISH THREADED COARSE RODS** are great for hangers, anchor bolts, U-bolts, and clamps. Complete with a brass oil finish, these threaded rods have a medium strength material that is non-corrosive.

D = Diameter

L = Length

ORDER BY ITEM (PACKAGE) NUMBER

UNC Coarse Thread

BRASS 3 FT			
Diameter x Length	Approx. Weight (lb) /100 pcs	Part #	Qty
8-32 X 36	40.000	<b>5691-308</b>	1
10-24 X 36	23.500	<b>5691-310</b>	1
1/4-20 X 36	40.000	<b>5691-314</b>	1
5/16-18 X 36	200.000	<b>5691-316</b>	1
3/8-16 X 36	200.000	5691-318	1
1/2-13 X 36	165.000	<b>5691-322</b>	1
5/8-11 X 36	253.500	<b>5691-324</b>	1
3/4-10 X 36	392.000	<b>5691-326</b>	1



**5691-310**

UNF Fine Thread

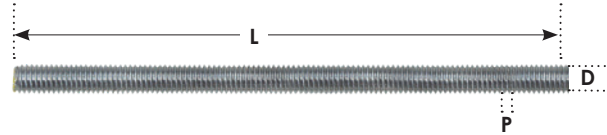
BRASS 3 FT			
Diameter x Length	Approx. Weight (lb) /100 pcs	Part #	Qty
10-32 X 36	40.000	<b>5691-311</b>	1

Stock items are shown in **HEAVY** type.

**141**  
Series

**paulin** METRIC THREADED RODS

PART CLASS #  
811AI | DIN 975



**THREADED RODS** are great for hangers, anchor bolts, U-bolts, and clamps. Threaded rods have many applications, working as a pin to fasten or connect two materials together. Rods can be inserted into various materials like concrete, wood or metal either temporarily or permanently.

**L** = Length      **D** = Diameter      **P** = Pitch

**ORDER BY ITEM (PACKAGE) NUMBER**

**ISO Coarse Thread**

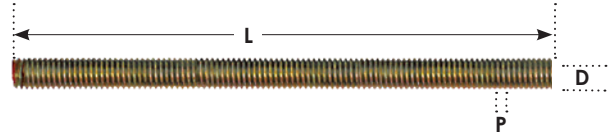
ZINC PLATED				
Diameter-Pitch: <b>M6-1.00</b>				
Length	DIN	Approx. Weight (lb) /100 pcs	Part #	Qty
300 mm	975	10.00	<b>141-606</b>	1
1 metre	975	40.00	141-706	10
Diameter-Pitch: <b>M8-1.25</b>				
Length	DIN	Approx. Weight (lb) /100 pcs	Part #	Qty
300 mm	975	10.00	<b>141-608</b>	1
1 metre	975	70.00	<b>141-708</b>	10
Diameter-Pitch: <b>M10-1.50</b>				
Length	DIN	Approx. Weight (lb) /100 pcs	Part #	Qty
300 mm	975	30.00	<b>141-610</b>	1
1 metre	975	110.00	<b>141-710</b>	10
Diameter-Pitch: <b>M12-1.75</b>				
Length	DIN	Approx. Weight (lb) /100 pcs	Part #	Qty
300 mm	975	40.00	<b>141-612</b>	1
1 metre	975	140.00	<b>141-712</b>	5
Diameter-Pitch: <b>M14-2.00</b>				
Length	DIN	Approx. Weight (lb) /100 pcs	Part #	Qty
1 metre	975	213.00	141-714	5
Diameter-Pitch: <b>M16-2.00</b>				
Length	DIN	Approx. Weight (lb) /100 pcs	Part #	Qty
1 metre	975	292.00	<b>141-716</b>	5
Diameter-Pitch: <b>M18-2.50</b>				
Length	DIN	Approx. Weight (lb) /100 pcs	Part #	Qty
1 metre	975	363.00	<b>141-718</b>	3
Diameter-Pitch: <b>M20-2.50</b>				
Length	DIN	Approx. Weight (lb) /100 pcs	Part #	Qty
1 metre	975	458.00	<b>141-720</b>	3
Diameter-Pitch: <b>M24-3.00</b>				
Length	DIN	Approx. Weight (lb) /100 pcs	Part #	Qty
1 metre	975	660.00	<b>141-724</b>	3

Stock items are shown in **HEAVY** type.

**141**  
Series

**paulin** METRIC THREADED RODS

PART CLASS #  
811AI | DIN 975



L = Length

D = Diameter

P = Pitch

ORDER BY ITEM (PACKAGE) NUMBER  
ISO Coarse Thread

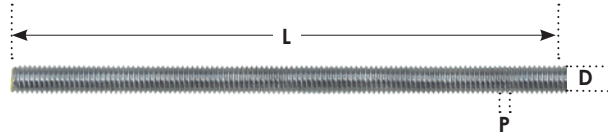
YELLOW ZINC									
Diameter-Pitch: <b>M6-1.00</b>					Diameter-Pitch: <b>M14-2.00</b>				
Length	DIN	Approx. Weight (lb) /100 pcs	Part #	Qty	Length	DIN	Approx. Weight (lb) /100 pcs	Part #	Qty
1 metre	975	—	<b>141-806</b>	10	1 metre	975	—	141-814	5
Diameter-Pitch: <b>M8-1.25</b>					Diameter-Pitch: <b>M16-2.00</b>				
Length	DIN	Approx. Weight (lb) /100 pcs	Part #	Qty	Length	DIN	Approx. Weight (lb) /100 pcs	Part #	Qty
1 metre	975	70.00	<b>141-808</b>	10	1 metre	975	288.00	141-816	5
Diameter-Pitch: <b>M10-1.50</b>					Diameter-Pitch: <b>M18-2.50</b>				
Length	DIN	Approx. Weight (lb) /100 pcs	Part #	Qty	Length	DIN	Approx. Weight (lb) /100 pcs	Part #	Qty
1 metre	975	—	<b>141-810</b>	10	1 metre	975	—	<b>141-818</b>	3
Diameter-Pitch: <b>M12-1.75</b>					Diameter-Pitch: <b>M20-2.50</b>				
Length	DIN	Approx. Weight (lb) /100 pcs	Part #	Qty	Length	DIN	Approx. Weight (lb) /100 pcs	Part #	Qty
1 metre	975	160.00	141-812	5	1 metre	975	—	141-820	3
Diameter-Pitch: <b>M24-3.00</b>									
Length	DIN	Approx. Weight (lb) /100 pcs	Part #	Qty					
1 metre	975	—	<b>141-824</b>	3					

Stock items are shown in **HEAVY** type.

**5912**  
Series

**paullin** METRIC THREADED RODS

PART CLASS #  
811AJ | DIN 975

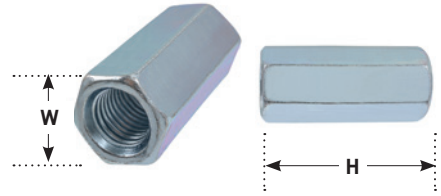


L = Length      D = Diameter      P = Pitch

ORDER BY ITEM (PACKAGE) NUMBER  
ISO Coarse Thread

18.8 STAINLESS STEEL									
Diameter-Pitch: <b>M5-.08</b>					Diameter-Pitch: <b>M12-1.75</b>				
Length	DIN	Approx. Weight (lb) /100 pcs	Part #	Qty	Length	DIN	Approx. Weight (lb) /100 pcs	Part #	Qty
1 metre	975	27.00	<b>5912-310</b>	1	1 metre	975	160.00	<b>5912-322</b>	1
Diameter-Pitch: <b>M6-1.00</b>					Diameter-Pitch: <b>M16-2.00</b>				
Length	DIN	Approx. Weight (lb) /100 pcs	Part #	Qty	Length	DIN	Approx. Weight (lb) /100 pcs	Part #	Qty
1 metre	975	50.00	<b>5912-314</b>	1	1 metre	975	295.00	<b>5912-324</b>	1
Diameter-Pitch: <b>M8-1.25</b>					Diameter-Pitch: <b>M20-2.50</b>				
Length	DIN	Approx. Weight (lb) /100 pcs	Part #	Qty	Length	DIN	Approx. Weight (lb) /100 pcs	Part #	Qty
1 metre	975	75.00	<b>5912-316</b>	1	1 metre	975	470.00	<b>5912-326</b>	1
Diameter-Pitch: <b>M10-1.50</b>					Diameter-Pitch: <b>M24-3.00</b>				
Length	DIN	Approx. Weight (lb) /100 pcs	Part #	Qty	Length	DIN	Approx. Weight (lb) /100 pcs	Part #	Qty
1 metre	975	120.00	<b>5912-318</b>	1	1 metre	975	665.00	<b>5912-330</b>	1

Stock items are shown in **HEAVY** type.

**141**  
Series**paulin** HEX COUPLING NUTSPART CLASS #  
800AF

**HEXAGON COUPLING NUTS**, also called extension nuts are used for joining or adjusting threaded rods. Constructed in a hex shape for a wrench hold. Common uses for coupling nuts include tightening rod assemblies or to pushing a rod assembly outward. Zinc plated and 18.8 stainless steel fasteners have good corrosion resistant qualities and are a good choice for indoor, outdoor and industrial applications.

W = Width (Across Flats) H = Height

ORDER BY ITEM (PACKAGE) NUMBER  
UNC Coarse Thread

ZINC PLATED							
Diameter-Pitch	Approx. Weight (lb) /100 pcs	W	H	Black Box #	Qty	Bulk Carton #	Qty
1/4-20	2.825	7/16	7/8	<b>141-914</b>	50	<b>B141-914</b>	1200
5/16-18	7.000	1/2	1-3/4	<b>141-916</b>	25	<b>B141-916</b>	700
3/8-16	8.160	9/16	1-3/4	<b>141-918</b>	25	<b>B141-918</b>	500
7/16-14	9.700	5/8	1-3/4	<b>141-920</b>	25	<b>B141-920</b>	500
1/2-13	14.971	3/4	1-3/4	<b>141-922</b>	25	<b>B141-922</b>	350
5/8-11	28.500	15/16	1-3/4	<b>141-924</b>	15	<b>B141-924</b>	160
3/4-10	41.083	1-1/8	2-1/4	<b>141-926</b>	15	<b>B141-926</b>	120
7/8-9	52.900	1-1/4	2-1/2	<b>141-928</b>	10	<b>B141-928</b>	100
1-8	40.300	1-1/4	2-1/2	<b>141-930</b>	10	<b>B141-930</b>	100

**5038**  
Series**paulin** HEX COUPLING NUTSPART CLASS #  
800AG

W = Width (Across Flats) H = Height

ORDER BY ITEM (PACKAGE) NUMBER  
UNC Coarse Thread

18.8 STAINLESS STEEL					
Diameter-Pitch	Approx. Weight (lb) /100 pcs	W	H	Black Box #	Qty
1/4-20	3.170	7/16	7/8	<b>5038-914</b>	50
5/16-18	3.425	1/2	1-3/4	<b>5038-916</b>	25
3/8-16	3.680	9/16	1-3/4	<b>5038-918</b>	25
1/2-13	5.710	3/4	1-3/4	<b>5038-922</b>	25
5/8-11	7.740	15/16	1-3/4	<b>5038-924</b>	15
3/4-10	9.770	1-1/8	2-1/4	<b>5038-926</b>	15

Stock items are shown in **HEAVY** type.

## 142 Series paulin® ROUND RODS

PART CLASS #  
811AA | 811AC



**ROUND RODS** are traditionally used for axles, tent pegs, plant stakes and garden furniture. Cold rolled steel is smooth and has a bright finish. Cold rolled steel is 50% stronger than hot rolled steel. Choose from several finishes to fit your workhouse or garden needs.

D= Diameter      L = Length

### ORDER BY ITEM (PACKAGE) NUMBER

STEEL			
Diameter x Length	Approx. Weight (lb) /100 pcs	Part #	Qty
1/8 X 36	1.000	<b>142-002</b>	1
3/16 X 36	3.000	<b>142-003</b>	1
1/4 X 36	13.000	<b>142-004</b>	1
5/16 X 36	26.000	<b>142-006</b>	1
3/8 X 36	39.000	<b>142-008</b>	1
1/8 X 48	16.600	<b>142-009</b>	1
7/16 X 36	57.800	<b>142-010</b>	1
1/2 X 36	140.000	<b>142-012</b>	1
5/8 X 36	400.000	<b>142-014</b>	1
3/4 X 36	198.600	<b>142-016</b>	1
3/16 X 48	300.000	<b>142-017</b>	1

ALUMINUM			
Diameter x Length	Approx. Weight (lb) /100 pcs	Part #	Qty
3/8 X 36	17.000	<b>142-808</b>	1
1/2 X 36	30.800	<b>142-812</b>	1
5/8 X 36	39.000	<b>142-814</b>	1
3/8 X 48	14.200	<b>142-820</b>	1
1/2 X 48	30.800	<b>142-822</b>	1
3/8 X 72	34.600	<b>142-828</b>	1
1/2 X 72	60.400	<b>142-832</b>	1



142-002



142-808



5091-410

## 5091 Series paulin® ROUND RODS

PART CLASS #  
811AK

D= Diameter      L = Length

### ORDER BY ITEM (PACKAGE) NUMBER

18.8 STAINLESS STEEL 3 FT			
Diameter x Length	Approx. Weight (lb) /100 pcs	Part #	Qty
3/16 X 36	27.000	<b>5091-410</b>	1

Stock items are shown in **HEAVY** type.



**5691**  
Series**paulin** ROUND RODSPART CLASS #  
811AM

D= Diameter

L = Length

## ORDER BY ITEM (PACKAGE) NUMBER

BRASS 3 FT			
Diameter x Length	Approx. Weight (lb) /100 pcs	Part #	Qty
1/8 X 36	15.000	<b>5691-408</b>	1
3/16 X 36	30.000	<b>5691-410</b>	1
1/4 X 36	53.500	<b>5691-414</b>	1

**5691-408****142**  
Series**paulin** ROUND TUBINGPART CLASS #  
811AC | 811AD

**ROUND TUBING** are great for fence repairs, key stock, handles and safety grids. Light weight and are extremely corrosion resistant. Great for commercial and home applications. Corrosion resistant.

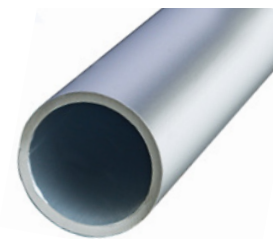
OD = Outside Diameter

T = Thickness

L = Length

## ORDER BY ITEM (PACKAGE) NUMBER

ALUMINUM			
OD x L	Approx. Weight (lb) /100 pcs	Part #	Qty
3/4 X 36	16.000	<b>142-338</b>	1
1 X 36	21.400	<b>142-340</b>	1
1-1/4 X 36	37.600	<b>142-344</b>	1
3/4 X 48	20.200	<b>142-348</b>	1
3/4 X 72	33.000	<b>142-349</b>	1
1 X 72	44.000	<b>142-350</b>	1
1-1/4 X 72	1500.000	<b>142-354</b>	1

**142-338**

STEEL			
OD x T x L	Approx. Weight (lb) /100 pcs	Part #	Qty
1/2 X 0.065 X 36	77.000	<b>142-400</b>	1
3/4 X 0.065 X 36	51.000	<b>142-402</b>	1
1 X 0.065 X 36	71.400	<b>142-404</b>	1
3/4 X 0.065 X 48	71.800	<b>142-412</b>	1
1 X 0.065 X 48	99.200	<b>142-414</b>	1

**142-400**Stock items are shown in **HEAVY** type.

**142** Series **paulin**® SQUARE RODS

PART CLASS #  
811AC | 811AD



**SQUARE RODS** can be used for general repairs in both commercial and residential.

**D** = Diameter      **W** = Width      **L** = Length

**ORDER BY ITEM (PACKAGE) NUMBER**

ALUMINUM			
Diameter x Length	Approx. Weight (lb) /100 pcs	Part #	Qty
1/2 X 36	29.600	<b>142-846</b>	1

STEEL ZINC PLATED			
W x L	Approx. Weight (lb) /100 pcs	Part #	Qty
3/16 X 12	10.000	<b>142-317</b>	1
1/4 X 12	20.000	<b>142-318</b>	1
5/16 X 12	30.000	<b>142-319</b>	1
3/8 X 12	40.000	<b>142-321</b>	1
1/2 X 12	80.000	<b>142-323</b>	1



Stock items are shown in **HEAVY** type.

**142**  
Series**paulin** SQUARE TUBINGPART CLASS #  
811AD | 811AF

**ALUMINUM SQUARE TUBING** is made from clear, anodized extruded aluminum. Mechanically made-hardened for additional strength. Can be worked with ordinary hand tools, cut and drilled easily. Lightweight and highly corrosion resistant yet strong. Unlike mill finish, anodized aluminum can be used for exterior applications.

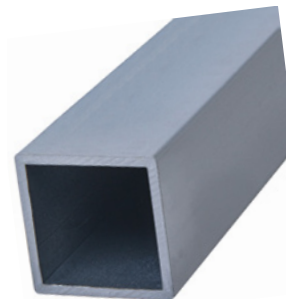
W = Width    T = Thickness    L = Length    D = Diameter

## ORDER BY ITEM (PACKAGE) NUMBER

STEEL			
W x T x L	Approx. Weight (lb) /100 pcs	Part #	Qty
1/2 X 0.065 X 36	132.000	<b>142-300</b>	1
3/4 X 0.065 X 36	68.000	<b>142-302</b>	1
1 X 0.065 X 72	190.000	<b>142-303</b>	1
1 X 0.065 X 36	96.000	<b>142-304</b>	1
1-1/4 X 0.065 X 36	—	142-306	1
1/2 X 1/2 X 48	121.000	<b>142-311</b>	1
3/4 X 0.065 X 48	100.000	<b>142-312</b>	1
1 X 0.065 X 48	128.000	<b>142-314</b>	1

PERFORATED STEEL ZINC PLATED			
W x L	Approx. Weight (lb) /100 pcs	Part #	Qty
1 X 36	244.000	<b>142-328</b>	1
1-1/4 X 36	328.000	<b>142-329</b>	1
1-1/2 X 36	387.000	<b>142-330</b>	1

ALUMINUM			
D x T x L	Approx. Weight (lb) /100 pcs	Part #	Qty
3/4 X 36	28.000	<b>142-430</b>	1
1 X 36	37.000	<b>142-432</b>	1
1 X 96	224.000	<b>142-433</b>	1
1/16 X 3/4 X 48	30.000	<b>142-436</b>	1
1/16 X 1 X 48	50.600	<b>142-438</b>	1
1/16 X 3/4 X 72	55.400	<b>142-440</b>	1
1/16 X 1 X 72	74.400	<b>142-442</b>	1

**142-300****142-328****142-430**Stock items are shown in **HEAVY** type.

**142**  
Series

**paulin** ANGLE STOCK

PART CLASS #  
811AF | 811AA

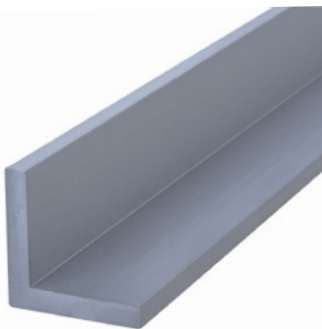


T = Thickness      W = Width      L = Length

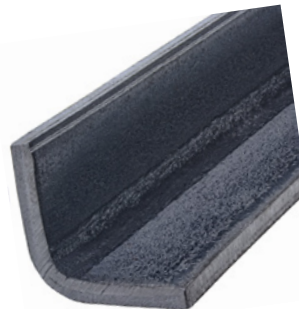
ORDER BY ITEM (PACKAGE) NUMBER

ALUMINUM			
T x W x L	Approx. Weight (lb) /100 pcs	Part #	Qty
1/8 X 3/4 X 36	52.000	<b>142-700</b>	1
1/8 X 1 X 36	35.000	<b>142-702</b>	1
1/8 X 1-1/2 X 36	56.000	<b>142-706</b>	1
1/8 X 2 X 36	115.000	<b>142-708</b>	1
1/8 X 2 X 48	217.000	<b>142-709</b>	1
1/16 X 1-1/4 X 48	63.000	<b>142-710</b>	1
1/16 X 1 X 72	10.000	<b>142-711</b>	1
1/16 X 3/4 X 72	100.000	<b>142-712</b>	1
1/16 X 1/2 X 96	23.000	<b>142-713</b>	1
1/16 X 1 X 96	46.000	<b>142-714</b>	1
1/16 X 1-1/2 X 96	76.000	<b>142-715</b>	1
1/16 X 2 X 96	101.000	<b>142-716</b>	1
1/8 X 1 X 96	93.000	<b>142-717</b>	1
1/16 X 3/4 X 96	37.000	<b>142-718</b>	1
1/16 X 3/4 X 48	37.000	<b>142-720</b>	1
1/8 X 3/4 X 48	37.000	<b>142-721</b>	1
1/8 X 1 X 48	50.000	<b>142-722</b>	1
1/8 X 1-1/2 X 48	76.000	<b>142-726</b>	1
1/8 X 3/4 X 72	52.800	<b>142-740</b>	1
1/8 X 1 X 72	71.000	<b>142-742</b>	1
1/8 X 1-1/2 X 72	107.600	<b>142-746</b>	1
1/8 X 1-1/2 X 96	300.000	<b>142-749</b>	1
1/16 X 3/4 X 36	13.000	<b>142-778</b>	1
1/16 X 1 X 36	18.000	<b>142-780</b>	1
1/16 X 1/2 X 3/4 X 36	50.000	<b>142-790</b>	1

STEEL			
T x W x L	Approx. Weight (lb) /100 pcs	Part #	Qty
1/8 X 3/4 X 36	63.600	<b>142-100</b>	1
1/8 X 1 X 36	88.000	<b>142-102</b>	1
1/8 X 1-1/4 X 36	116.800	<b>142-104</b>	1
1/8 X 1-1/2 X 36	131.200	<b>142-106</b>	1
1/8 X 2 X 36	472.000	<b>142-107</b>	1
1/8 X 3/4 X 48	81.200	<b>142-120</b>	1
1/8 X 1 X 48	115.000	<b>142-122</b>	1
1/8 X 1-1/4 X 48	148.000	<b>142-124</b>	1
1/8 X 1-1/2 X 48	182.200	<b>142-126</b>	1
1/8 X 2 X 48	611.000	<b>142-127</b>	1
1/8 X 3/4 X 72	800.000	<b>142-140</b>	1
1/8 X 1 X 72	172.200	<b>142-142</b>	1
1/8 X 1-1/4 X 72	219.200	<b>142-144</b>	1
1/8 X 1-1/2 X 72	256.400	<b>142-146</b>	1
1/8 X 2 X 72	800.000	<b>142-147</b>	1
1/4 X 2 X 48	1275.000	<b>142-167</b>	1



**142-700**



**142-100**

Stock items are shown in **HEAVY** type.

**142**  
Series

# PAULIN ANGLE STOCK

PART CLASS #  
811AD



T = Thickness      W = Width      L = Length

### ORDER BY ITEM (PACKAGE) NUMBER

SLOTTED ZINC PLATED STEEL			
W x L	Approx. Weight (lb) /100 pcs	Part #	Qty
1-1/2 X 12	50.000	<b>142-194</b>	1
1-1/4 X 96	110.000	<b>142-195</b>	1
1-1/2 X 96	179.000	<b>142-196</b>	1



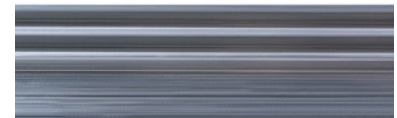
**142-194**

SLOTTED GALVANIZED STEEL			
T x W x L	Approx. Weight (lb) /100 pcs	Part #	Qty
0.074 X 1-1/2 X 36	115.000	<b>142-200</b>	1
0.074 X 1-1/2 X 48	87.800	<b>142-202</b>	1
0.074 X 1-1/2 X 72	129.000	<b>142-204</b>	1
1-3/8 X 0.074 X 36	40.000	<b>142-220</b>	1
1-3/8 X 0.074 X 48	51.000	<b>142-222</b>	1

**142**  
Series

# PAULIN TRACK SET

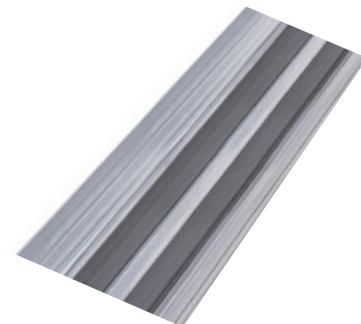
PART CLASS #  
811AF



W = Width      L = Length

### ORDER BY ITEM (PACKAGE) NUMBER

ALUMINUM			
W x L	Approx. Weight (lb) /100 pcs	Part #	Qty
1/8 X 48	500.000	<b>142-750</b>	1
1/4 X 48	38.400	<b>142-751</b>	1
1/2 X 48	46.000	<b>142-752</b>	1



**142-750**

Stock items are shown in **HEAVY** type.

**142**  
Series**paulin** FLAT STOCKPART CLASS #  
811AD

**FLAT STEEL** is perfect for a number of uses, including ladder hangers, braces, and are easy to weld to fit any need. Durable construction to remain sturdy and look good longer. Flats can be formed into any shape. Non-plated for easier welding.

T = Thickness

W = Width

L = Length

**ORDER BY ITEM (PACKAGE) NUMBER**

STEEL			
T x W x L	Approx. Weight (lb) /100 pcs	Part #	Qty
1/8 X 3/4 X 36	300.000	<b>142-040</b>	1
1/8 X 1 X 36	49.000	<b>142-042</b>	1
1/8 X 1-1/4 X 36	62.000	<b>142-044</b>	1
1/8 X 1-1/2 X 36	69.000	<b>142-046</b>	1
1/8 X 2 X 36	215.000	<b>142-048</b>	1
3/16 X 2 X 36	368.000	<b>142-049</b>	1
1/8 X 3/4 X 48	54.000	<b>142-060</b>	1
1/8 X 1 X 48	66.000	<b>142-062</b>	1
1/8 X 3 X 36	345.000	<b>142-063</b>	1
1/8 X 1-1/4 X 48	82.000	<b>142-064</b>	1
1/8 X 1-1/2 X 48	99.000	<b>142-066</b>	1
1/8 X 2 X 48	130.000	<b>142-068</b>	1
1/8 X 3/4 X 72	83.000	<b>142-080</b>	1
1/8 X 1 X 72	90.000	<b>142-082</b>	1
1/8 X 1-1/4 X 72	122.800	<b>142-084</b>	1
1/8 X 1-1/2 X 72	134.600	<b>142-086</b>	1
1/8 X 2 X 72	186.200	<b>142-088</b>	1

**142-040**Stock items are shown in **HEAVY** type.

**142**  
Series

# Paulin<sup>®</sup> FLAT STOCK

PART CLASS #  
811AF



T = Thickness      W = Width      L = Length

ORDER BY ITEM (PACKAGE) NUMBER

ALUMINUM			
T x W x L	Approx. Weight (lb) /100 pcs	Part #	Qty
1/8 X 3/4 X 36	25.000	142-640	1
1/8 X 1 X 36	36.000	142-642	1
1/8 X 1-1/2 X 36	58.000	142-646	1
1/8 X 2 X 36	72.000	142-648	1
1/8 X 3/4 X 48	35.000	142-660	1
1/8 X 1 X 48	50.000	142-662	1
1/8 X 1-1/2 X 48	78.500	142-666	1
1/8 X 3/4 X 72	29.000	142-680	1
1/8 X 1 X 72	38.000	142-682	1
1/8 X 1-1/2 X 72	59.200	142-686	1
1/8 X 1 X 96	51.000	142-687	1
1/8 X 1-1/2 X 96	76.000	142-688	1
1/8 X 2 X 96	100.000	142-689	1



142-640

RODS & SHAPES

**5091**  
Series

# Paulin<sup>®</sup> FLAT STOCK

PART CLASS #  
811AE

T = Thickness      W = Width      L = Length

ORDER BY ITEM (PACKAGE) NUMBER

18.8 STAINLESS STEEL			
T x W x L	Approx. Weight (lb) /100 pcs	Part #	Qty
1/8 X 3/4 X 36	91.000	5091-600	1

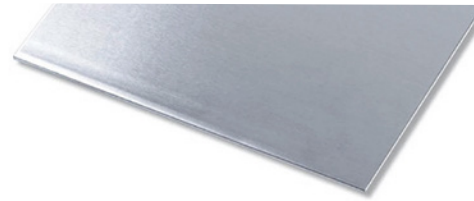


5091-600

Stock items are shown in HEAVY type.

**142**  
Series

**paulin** SHEET METAL



PART CLASS #  
811AD

W = Width

L = Length

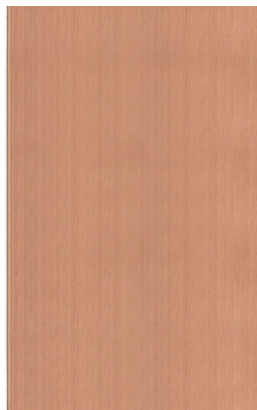
ORDER BY ITEM (PACKAGE) NUMBER

COPPER			
26 Gauge			
W X L	Approx. Weight (lb) /100 pcs	Part #	Qty
12 X 24	—	<b>142-485</b>	1
24 X 24	350.000	<b>142-486</b>	1

GALVANIZED STEEL			
W X L	Approx. Weight (lb) /100 pcs	Part #	Qty
12 X 24	134.000	142-495	1
26 Gauge			
12 X 18	132.000	<b>142-496</b>	1
24 X 24	295.000	<b>142-497</b>	1
36 X 24	190.800	<b>142-500</b>	1

STEEL			
16 Gauge			
W X L	Approx. Weight (lb) /100 pcs	Part #	Qty
6 X 18	160.000	<b>142-501</b>	1
12 X 24	472.000	<b>142-502</b>	1
12 X 18	342.000	<b>142-503</b>	1
24 X 6	219.000	<b>142-522</b>	1
24 X 24	915.000	<b>142-504</b>	1
22 Gauge			
6 X 24	47.000	<b>142-520</b>	1
24 X 24	418.000	<b>142-505</b>	1
24 X 48	910.000	<b>142-506</b>	1

STEEL (COLD ROLLED)			
22 Gauge			
W X L	Approx. Weight (lb) /100 pcs	Part #	Qty
24 Gauge			
8 X 24	62.600	<b>142-524</b>	1
12 X 24	95.200	<b>142-528</b>	1



**142-485**



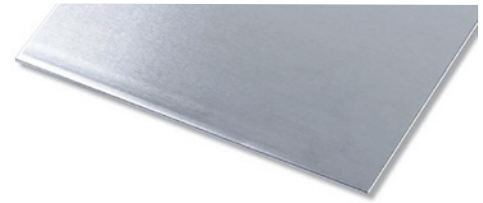
**142-501**

Stock items are shown in **HEAVY** type.



**142**  
Series

**paulin** SHEET METAL



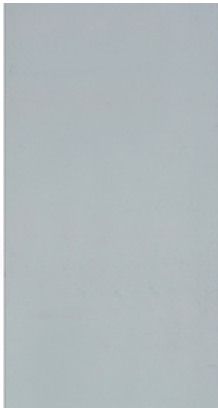
PART CLASS #  
811AF | 811AD

T = Thickness      W = Width      L = Length

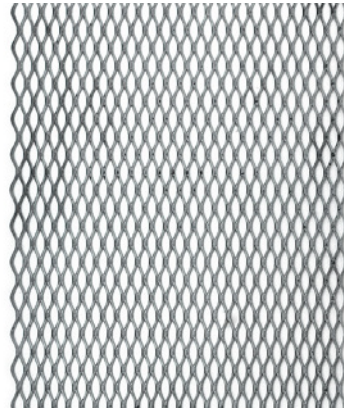
**ORDER BY ITEM (PACKAGE) NUMBER**

ALUMINUM			
T x W x L	Approx. Weight (lb) /100 pcs	Part #	Qty
0.025 X 8 X 24	38.000	<b>142-550</b>	1
0.025 X 12 X 24	200.000	142-551	1
0.025 X 24 X 48	250.000	<b>142-559</b>	1

EXPANDED STEEL			
Grid Opening T x W x L	Approx. Weight (lb) /100 pcs	Part #	Qty
1/2 X 12 X 24	170.000	<b>142-558</b>	1
1/2 X 24 X 24	460.000	<b>142-560</b>	1
3/4 X 12 X 24	159.000	142-568	1
3/4 X 24 X 24	272.000	<b>142-570</b>	1



**142-550**



**142-558/560/568/570**

Stock items are shown in **HEAVY** type.

**142**  
Series

**paulin** CORNER GUSSETS

PART CLASS #  
811AD



**CORNER GUSSETS** are used to reinforce joints and connections in shelving units using slotted angles and flats. Made of 10-14 gauge galvanized steel. Adds increased stability at corner connections.

T = Thickness      W = Width      L = Length

ORDER BY ITEM (PACKAGE) NUMBER

GALVANIZED STEEL			
10 Gauge			
T x W x L	Approx. Weight (lb) /100 pcs	Part #	Qty
3-7/16 X 3-7/16	80.500	142-617	1
14 Gauge			
2-7/8 X 2-7/8	22.000	142-618	1



142-617



142-618

Stock items are shown in **HEAVY** type.

**142**  
Series **paulin** SAFETY CAPS

PART CLASS #  
805AC



**SAFETY CAPS** are used to protect the ends of any 3/4" or 1" round/square rods. Can also be used for table and chair legs to prevent surface scratches.

O.D. = Outside Diameter      I.D. = Inside Diameter

ORDER BY ITEM (PACKAGE) NUMBER

ROUND			
Diameter	Approx. Weight (lb) /100 pcs	Part #	Qty
3/4 O.D.	0.400	142-600	50
1 O.D.	1.000	142-601	50

SQUARE			
Diameter	Approx. Weight (lb) /100 pcs	Part #	Qty
3/4 O.D.	0.450	142-602	50
1 O.D.	1.280	142-603	50
3/4 I.D.	0.400	142-606	50
1 I.D.	0.800	142-607	50



142-600



142-602



142-603



142-606



142-607

Stock items are shown in **HEAVY** type.



**paulin**®

**TORONTO**

900 Passmore Avenue, Toronto, ON, M1X 0C6

Tel: 416-694-3351

Fax: 416-981-7956

**LAVAL**

2591 Debray Street Laval, QC H7S 2J4

Tel: 1-450-688-4292

Fax: 1-450-688-4750

**EDMONTON**

17306 129th Avenue Edmonton, AB T5V 0C7

Tel: 1-800-262-9026

Fax: 1-780-900-0463

**WINNIPEG**

1670-A Inkster Blvd. Winnipeg, MB. R2X 2W8

Tel: 1-204 694-3802

Fax: 1-204-694-3804

**VANCOUVER**

3179 Thunderbird Cres. Burnaby, BC V5A 3G1

Tel: 1-604-421-3096

Fax: 1-604-357-1112

**The Hillman Group Canada ULC**

**HILLMAN**™