

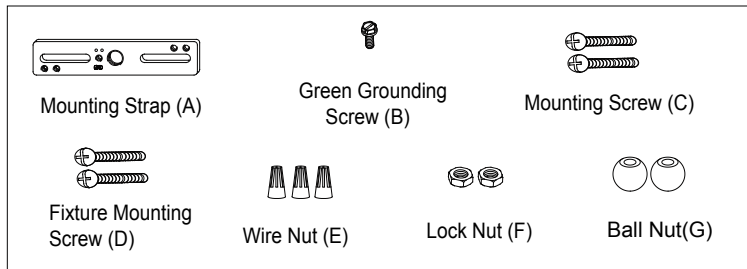
ASSEMBLY AND INSTALLATION INSTRUCTIONS

P0189

WARNING: TO AVOID RISK OF ELECTRICAL SHOCK, BE SURE TO SHUT OFF POWER BEFORE INSTALLING OR SERVICING THIS FIXTURE.

NOTES: 1. Before installing, consult local electrical codes for wiring and grounding requirements.
2. READ AND SAVE THIS INSTRUCTION.

Hardware Package (included):



Installation Steps

Turn off the power at fuse or circuit box.

1. Thread the fixture mounting screws through mounting strap, and then secure them with two lock nuts. Adjust the length of fixture mounting screws if necessary.

2. Attach mounting strap to the outlet box using two mounting screws.

3. Rod Connections:

- Thread the fixture wire from the fixture through the lower rod, and then secure the lower rod onto fixture using the threaded pipe.
- Thread the fixture wire through the middle rod, and then secure the middle rod onto the lower rod using the threaded pipe.
- Thread the fixture wire through the upper rod, and then secure the upper rod onto the middle rod using the threaded pipe.

Note: Length adjustable from 14" to 56". Use fewer rods if shorter length is desired.

4. Thread the fixture wire through the canopy kit, and then secure the rod assembly to the set nipple of the canopy kit.

5. Pull out the source wires from the outlet box. Make wire connections using wire nuts as follows:

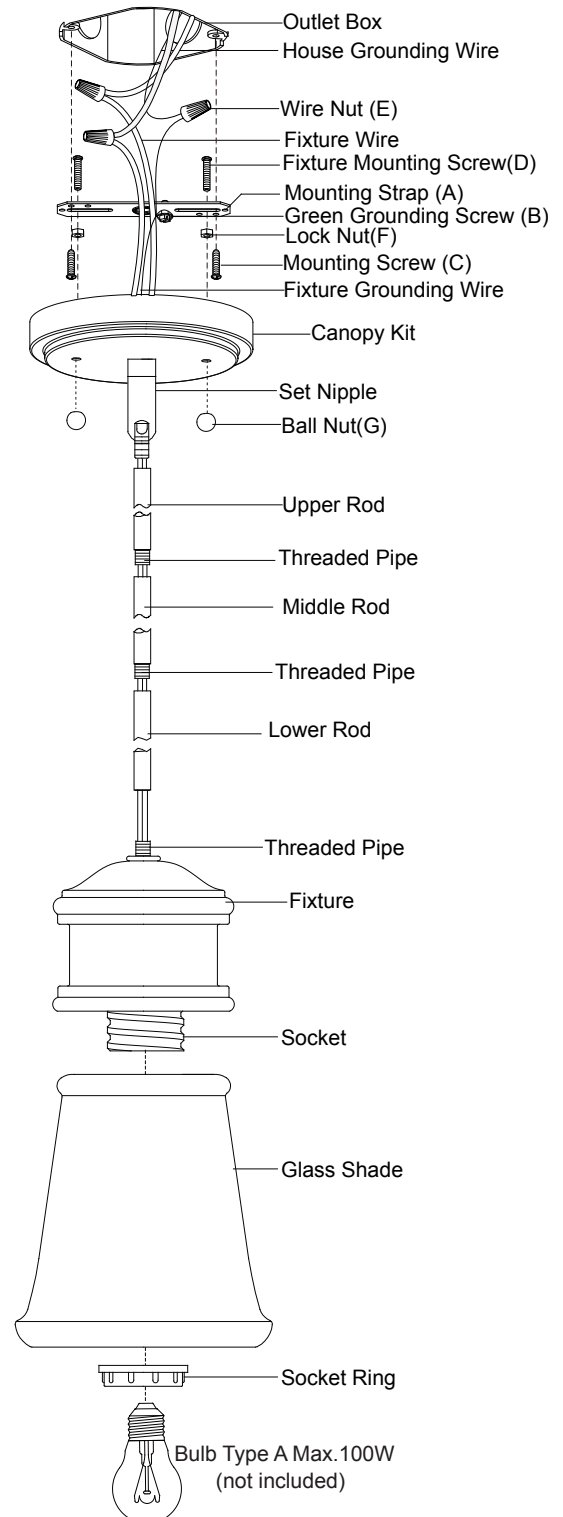
- Connect the smooth-coated wire (marked) from the fixture to the black wire from the power source.
- Connect the ribbed-coated wire (unmarked) from the fixture to the white wire from the power source.
- Attach the fixture grounding wire to the mounting strap with the green grounding screw, and then connect it to the house grounding wire with a wire nut.

Carefully put the wires back into the outlet box.

6. Attach the canopy kit to the mounting strap by inserting the fixture mounting screws, and then secure it with two ball nuts.

7. Attach the glass shade to the fixture, and then secure it with the socket ring.

8. Install a bulb (not included). Check relamping label at socket area or packaging for maximum allowed wattage.

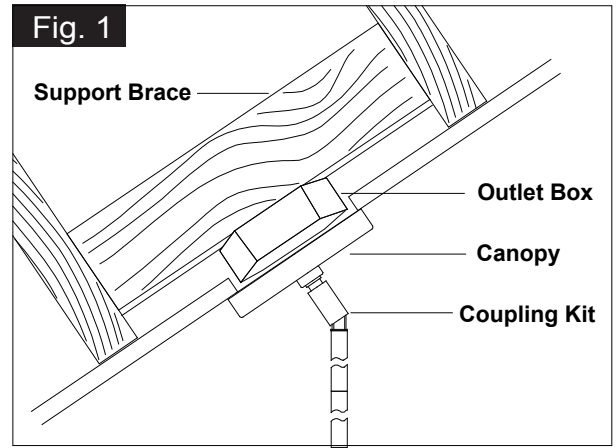


VAXCEL

151023

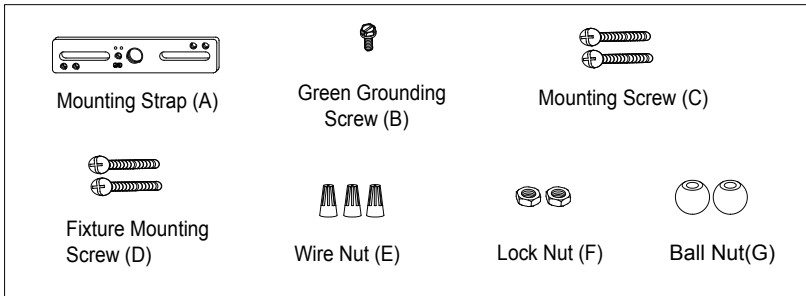
9. Angled mounting recommended for a vaulted or angled ceiling. (See Fig. 1)

Turn on the power at fuse or circuit box.

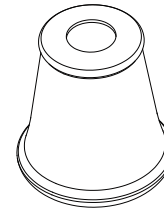


The following parts are available for re-order if damaged or missing.

Spare Parts List:



→ Mounting Hardware 5462MM (1 SET)

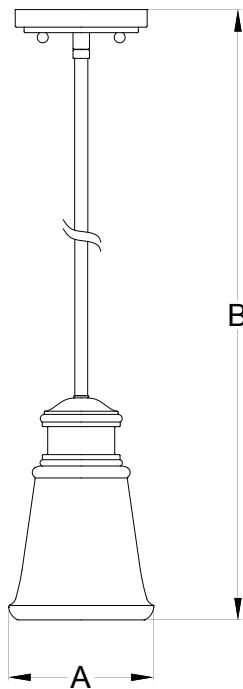


Glass Shade 9769FO (1PC)

12"Rod 3053RD (3PCS)

6"Rod 3054RD(1PC)

3"Rod 3055RD (1PC)



A: 5"

B: 14"~56"