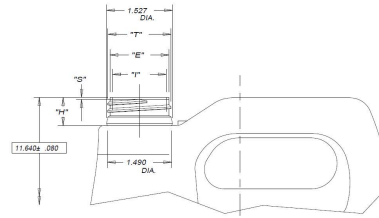
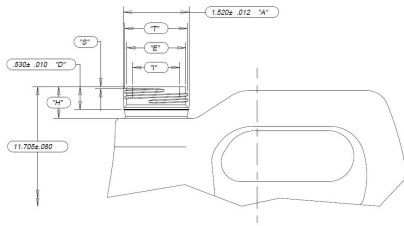
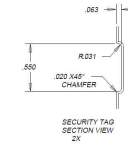


NECK FINISH	BOTTLE WEIGHT (G APPROX)	OVERFLOW CAPACITY (G APPROX)	"F" DIA	"E" DIA	"F" DIM	"E" DIM	"Y" DIA MIN	MIN LAND
AK38SP40	170.0	1110.0	1.476	1.382	.500	.091	.387	.050
	180.0	1120.0	1.476	1.358	.535	.091	.387	.050
	190.0	1130.0	1.452	1.358	.535	.091	.387	.050
38 MM SUNBEAM	170.0	1110.0	1.476	1.382	.605	.085	.387	.050
	180.0	1120.0	1.452	1.358	.630	.085	.387	.050
38 MM HOPFFER	170.0	1110.0	1.471	1.375	.730	.085	.387	.050
	180.0	1120.0	1.447	1.351	.700	.085	.387	.050

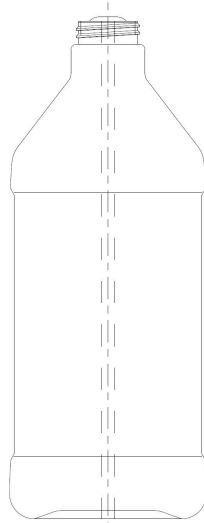
NOTE:
OPTIONAL WEIGHT OF 175 g ± 5 GRAMS WITH OVERFLOW CAPACITY OF 4110.0 g ± 53 CC



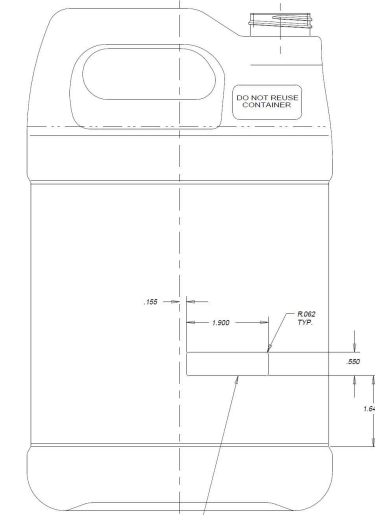
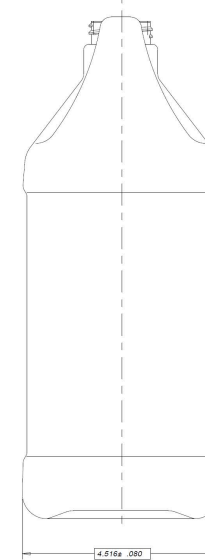
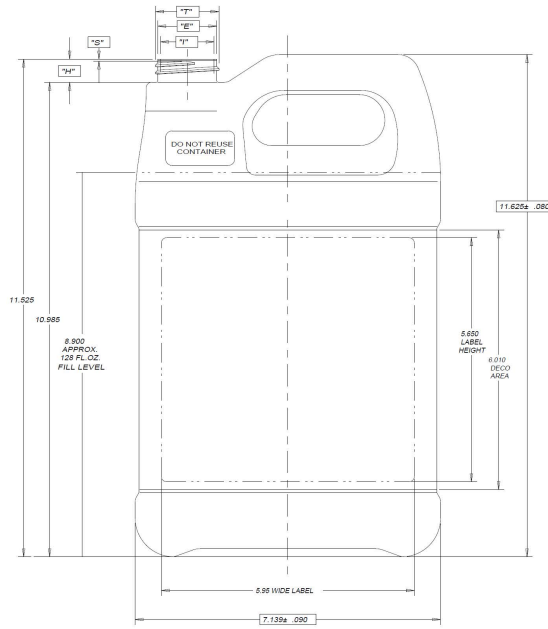
38MM SUNBEAM NECK FINISH



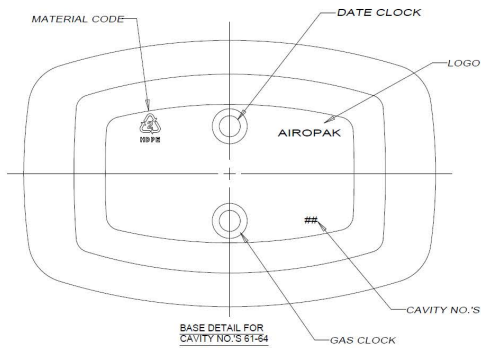
SECURITY TAG SECTION VIEW 2X



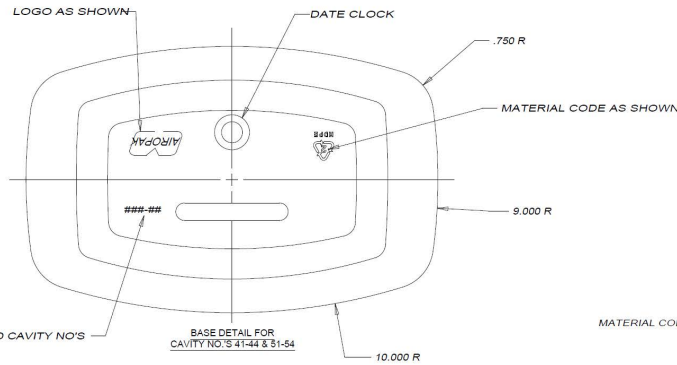
±.050
±.300 WIDE OPTIONAL VIEW STRIPE ON THIS SIDE



OPTIONAL POCKET .063" DEEP FOR SECURITY TAG (SEE SECTION VIEW)



BASE DETAIL FOR CAVITY NO'S 51-54



DISCLAIMER

THIS INFORMATION IS PROVIDED AS A GENERAL GUIDE, INCLUDING DIMENSIONS. IT IS THE CUSTOMER'S RESPONSIBILITIES TO SELECT THE PROPER CONTAINER FOR PRODUCT AND APPLICATION COMPATIBILITY.

DISTRIBUTED BY:



REF NO.:

DESCRIPTION: