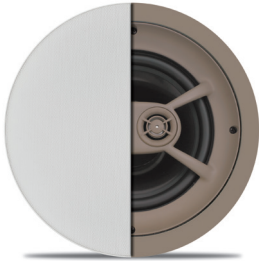


# Twin-Tweeter Ceiling Speakers



## Protege C825TT

**ITEM**  
PAS12825      **U/M**  
Each

One ceiling speaker with 8" dual voice coil graphite woofer, two 1" pivoting aluminum dome tweeters, +3dB bass & treble contour switches and 150 watt power handling.

- Replaces C800TT Single Stereo Ceiling Speaker
- Power Handling: 150 Watts
- Frequency Response: 28Hz - 22kHz
- Impedance: 8Ω
- Sensitivity: 92dB 1W/1m
- Includes Thin-Bezel Grille held by Neo Magnets
- Diameter x Depth: 111/8" x 4¼"
- Ceiling Cut Out: 9¾"

---

## Protege C625TT

**ITEM**  
PAS12625      **U/M**  
Each

One ceiling speaker with 6½" dual voice coil polypropylene woofer, two ½" hard dome tweeters and 75 watt power handling.

- Replaces C600TT Single Stereo Ceiling Speaker
- Power Handling: 75 Watts
- Frequency Response: 36Hz - 20kHz
- Impedance: 8Ω
- Sensitivity: 92dB 1W/1m
- Includes Thin-Bezel Grille held by Neo Magnets
- Diameter x Depth: 9¼" x 35/8"
- Ceiling Cut Out: 8¼"

