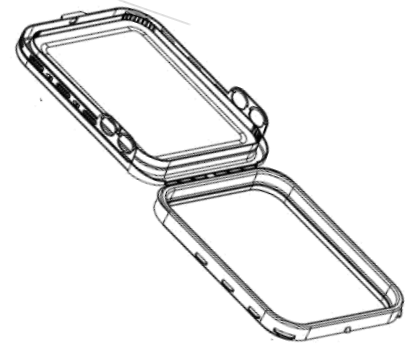


Product Data

Super Kube K2
5.0 Gallon



Cover Specification

Origin of Materials	100% US Manufactured
Material	Polypropylene
Mfg. Method	Injection Molding
Weight	.47 lbs. / 215 g
Height	1 1/4"
Min Wall Thickness	.050"
Top Outside Diameter	9 3/4" / 11 3/4"
Gasket	Dry Seal
Standard Color	White <i>Please inquire about custom colors</i>
Case Quantity	84 per case, 672 per pallet

Pail Specification

Origin of Materials	100% US Manufactured
Material	Polypropylene (Clarified Optional) <i>Plastic Handle</i>
Mfg. Method	Injection Molding
Weight	1.4 lbs. / 635 g
Min. Wall Thickness	.055"
Exterior Height	14 5/8" / With Cover 15 1/8"
Top Outside Diameter	9 1/2" / 11 1/4"
Bottom Outside Diameter	8 1/2" / 10 1/8"
Shipping Quantity	160 Units per Pallet 6,720 Units per Truckload
Standard Color	White <i>Please inquire about custom colors</i>
Print Area Decoration	12 1/4" x 36 1/4" In Mold Labeling (IML) 360° <i>Real Estate Below Beam to Bottom Edge Including Corners</i>
Top Load Rating	250 lbs.



DISTRIBUTED BY:



REF NO.:

DWG30469

DESCRIPTION:

PP Super Kube 2 Cover for 5 Gallon Pails

DISCLAIMER

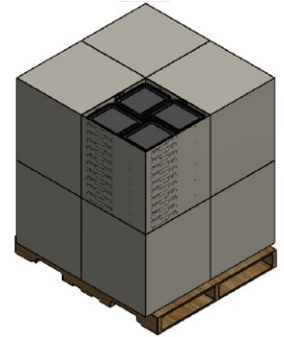
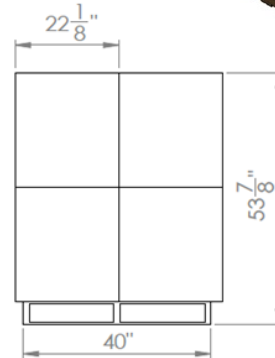
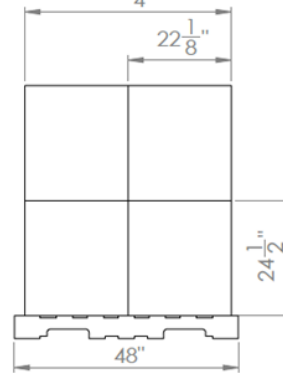
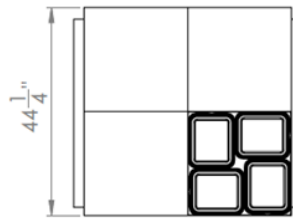
THIS INFORMATION IS PROVIDED AS A GENERAL GUIDE, INCLUDING DIMENSIONS. IT IS THE CUSTOMER'S RESPONSIBILITIES TO SELECT THE PROPER CONTAINER FOR PRODUCT AND APPLICATION COMPATIBILITY.

Product Data

Super Kube K2
5.0 Gallon

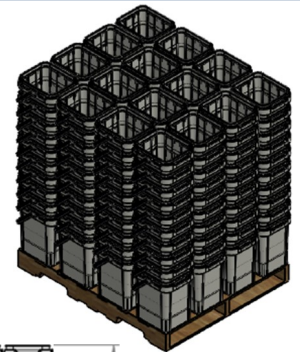
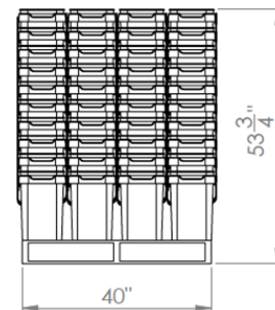
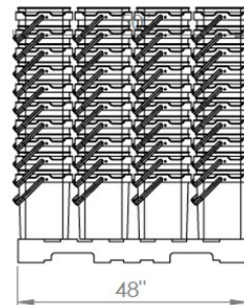
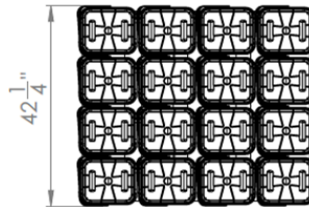
Pack Specifications For Cover

- 672 Units
- 4 Stacks x 21 High per Box
- 4 Boxes per Layer x 2 High
- Lid Material is PP



Pack Specifications For Pail

- 160 Units
- 16 Stacks x 10 High
- 6,720 Units per Truckload
- Pail Material is PP



DISCLAIMER

THIS INFORMATION IS PROVIDED AS A GENERAL GUIDE, INCLUDING DIMENSIONS. IT IS THE CUSTOMER'S RESPONSIBILITIES TO SELECT THE PROPER CONTAINER FOR PRODUCT AND APPLICATION COMPATIBILITY.

DISTRIBUTED BY:



REF NO.:

DWG30469

DESCRIPTION:

PP Super Kube 2 Cover for 5 Gallon Pails