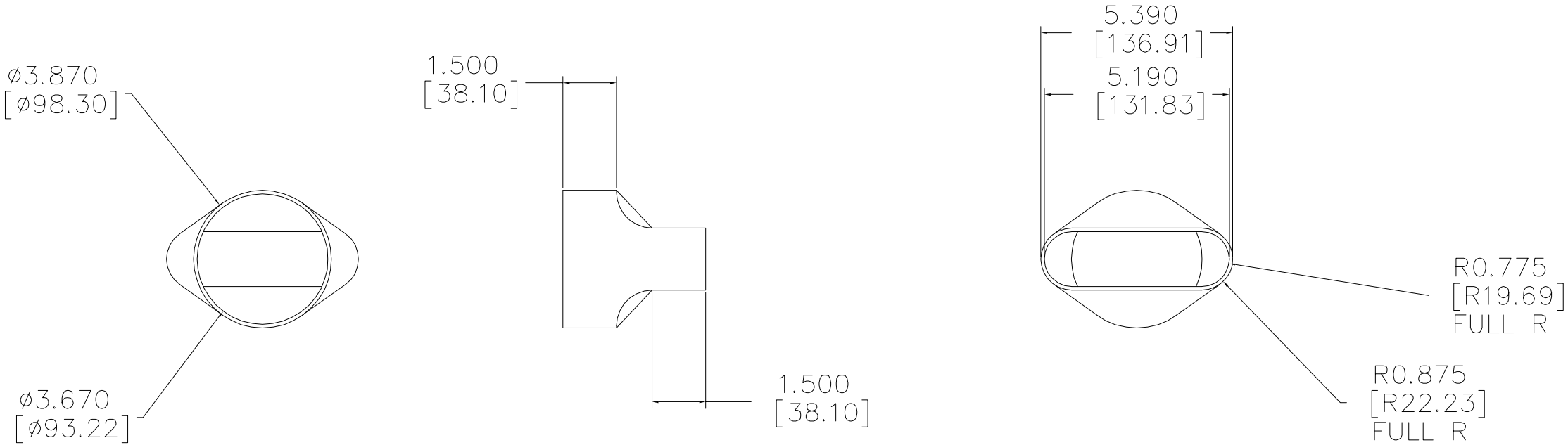


REVISIONS				
ECO	REV.	DESCRIPTION	DATE	APPROVED
	A	RELEASE FOR PRODUCTION	08-21-12	



JAMES LOUDSPEAKER	
1000PT / 1200PT	
STRAIGHT TO ROUND TOE-KICK ADAPTOR	
P/N: -	DWR #: 120821-A01
REVISED BY:	
DRAWN BY: M. PARK	FILE:
DATE: 08-21-12	SCALE:
APPROVED:	
DRAFTING APPROVED:	
DO NOT SCALE DRAWING	
DRAWING NOT TO BE USED FOR CNC	
TOLERANCES: ANG: $\pm = .5^\circ$ FRACT: $\pm = 1/32$	
DECIMALS: .XX $\pm = .01$.XXX $\pm = .005$	
REVISION: A	SHEET 1 OF 1