

Discover more at [schlage.co.nz](https://schlage.co.nz)

**Allegion New Zealand**

Freephone 0800 477 869

Freefax 0800 477 868

Email [nzinfo@allegion.com](mailto:nzinfo@allegion.com)

**About Allegion™**

Allegion (NYSE: ALLE) is a global pioneer in seamless access, with leading brands like CISA®, Interflex®, LCN®, Schlage®, SimonsVoss® and Von Duprin®. Focusing on security around the door and adjacent areas, Allegion secures people and assets with a range of solutions for homes, businesses, schools and institutions. Allegion had \$2.7 billion in revenue in 2020, and its security products are sold around the world.



Brio ■ Briton ■ LCN ■  ■ 



# Residential Guide

Smart style. **Smarter thinking.**



# Contents

## **4-10 Keyless Entrance Hardware**

- 5-6 Schlage Encode™ Smart Wi-Fi Deadbolt
- 7-8 Schlage Ease™ Smart Locks
- 9-10 Schlage S-Series Digital Door Locks

## **11-20 Entrance Hardware**

- 13-14 Schlage Pull Handles
- 15 Schlage Euro Mortice Locks
- 15 Schlage Euro Cylinders
- 17 Schlage F Series Entrance Sets
- 18 Schlage Regent Series Entrance Sets
- 18 Schlage Trilock™ Entrance Set
- 19 Schlage Form Series Deadbolts
- 19 Schlage Valor Series Deadbolts
- 20 Schlage B Series Deadbolts
- 20 Schlage Regent Series Deadbolts

## **21-40 Levers and Knobs**

- 23-24 Schlage Verta™ Series
- 25-26 Schlage Form Series
- 27 Schlage Medio Series
- 28 Schlage Grande Series
- 31 Schlage F Series
- 32 Schlage Valor Series
- 33 Schlage Moda Series
- 34 Schlage Element Series
- 35 Schlage Regent Series
- 36 Schlage Knobs
- 37-40 Schlage be BOLD with black

## **41-42 Sliding Door Hardware**

- 41 Schlage Stella® Sliding Door Lock
- 42 Brio Open Bar Rail
- 42 Brio Wardrobe Roll 50

## **43-48 General Hardware**

- 45 Schlage Wall Mounted Door Stops
- 46 Schlage Floor Mounted Door Stops
- 47 Schlage & Legge Cavity Sliding Hardware
- 48 Schlage General Hardware

## **53 Glossary and Guides**

## **54 Finish Swatches and Services**

## **55-64 Index**





# Keyless Entrance Hardware

Smart style. **Smarter thinking.**



## Making homes smarter.

The revolutionary Schlage Encode™ Smart Wi-Fi Deadbolt connects directly to your home Wi-Fi. There's no need for extra accessories or hubs, allowing you full control of your lock from anywhere.

Simply pair your lock with the Schlage Home app on your smartphone to lock or unlock your door and add or delete user codes from anywhere. You specify who has access and when by setting up to 100 codes, or sending virtual keys to guests via text or email.

Total control and peace of mind at your fingertips.

### Features and benefits

- Built-in Wi-Fi allows you to access your lock from anywhere
- Use voice commands via Google Assistant and Amazon Alexa
- Program access codes for temporary or recurring visitors
- Receive notifications when your lock has been accessed
- Can be retrofitted in minutes using a screwdriver
- View the date and time each code has been used, through the History feature in the Schlage Home app
- Low battery indicator offers weeks of advanced warning for battery replacement



**Encode**



**MB**

**Encode**



**SNP**

**Common pairing\***



**Oblong Pull Handle Entrance Set**



**MB SNP/SSS**

**Century Latitude Entrance Set**



**MB SNP**

**Latitude Lever**



**MB SNP**

\*Refer to page 37 for front entrance kits

**Technical Specifications**

- Graded best in Security, Durability and Finish (BHMA Grading System)
- Built in Wi-Fi for remote access and control
- Fingerprint resistant
- Illuminated touch screen
- 4 x AA alkaline batteries included
- 2.4 GHz Wi-Fi technology
- Built-in alarm technology senses potential security breaches at the lock

**Access**

- Access by PIN, key, Schlage Home app, or virtual assistants
- Store up to 100 user codes
- User codes can be setup as permanent, temporary or recurring access
- Works with your Schlage Home app, Amazon Alexa and Google Assistant

**Door Specifications**

- 54mm hole preparation - easy to retrofit
- 60mm or 70mm backset (adjustable)
- 35mm to 46mm door thickness
- Extension kit available for 47mm to 64mm

**Warranty**

- Limited lifetime mechanical warranty
- 3 year electronic warranty
- For finish warranties please refer to our website



**Schlage Ease™ S2 Smart Entry Lock**

## Styled for the smarter family home

The Schlage Ease™ range offers a stylish lock packed with modern functions the whole family can enjoy.

Consider the sleek design of the Schlage Ease™ S1 Smart Deadbolt or the convenient Schlage Ease™ S2 Smart Entry Lock with built-in lever, providing you and your family convenience and security for safer living.

Simple to install with just a screwdriver and easy to program storing up to 20 access codes. Pair your lock with the Schlage Abode app on your smartphone to unlock your door and provide access to your friends and family at the touch of a button.

Go keyless, for a smarter way of living.

### Features and benefits

- Various access options including touchpad, key or smartphone
- Easy to set up and program using the Schlage Abode app
- Remote access using the Schlage Wi-Fi Bridge AB100 (sold separately)
- Can be retrofitted in minutes using a screwdriver
- Built-in alarm technology senses potential security breaches at the lock
- Weather resistant (tested to IP55)
- Random PIN number function protects your entry code
- Low battery indicator offers weeks of advanced warning for battery replacement
- Use voice commands via Amazon Alexa and Google Assistant (coming soon)



**S1 Smart Deadbolt**

● B



**S2 Smart Entry Lock**

● B

**Optional accessory**



**Wi-Fi Bridge**

○ W

**Technical Specifications**

- Built-in alarm
- Auto locking
- Backlit touch screen
- Micro USB for emergency power
- 4 x AA alkaline batteries included
- Schlage C5 cylinder
- Can be keyed alike to other Schlage locksets
- Weather resistant (tested to IP55)

**Access**

- Access by PIN, key or Schlage Abode app
- Store up to 20 user codes
- Remote access available with Schlage Wi-Fi Bridge (AB100) (sold separately)
- Works with Schlage Abode app, Amazon Alexa, and Google Assistant (coming soon)

**Door Specifications**

- 54mm hole preparation - easy to retrofit
- 60mm or 70mm backset (adjustable)
- 33mm to 50mm door thickness

**Warranty**

- 2 year electronic and mechanical



## Smart style. Smart investment.

The Schlage S-Series electronic locks offer digital solutions for both a mortice and a rim lock. For multiple options to access your home or office in style, the S-Series offers something for everyone.

Easy to program and use, the S-Series allows access via user PIN codes, cards and tags.

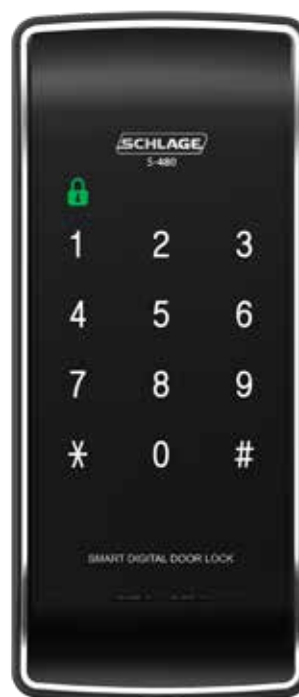
Temporary access codes can be created for contractors or guests that may need to enter your home on a short term basis.

### Features and benefits

- Leave home without keys! Access your home by user PIN, card or tag
- Easy to operate even at night with the illuminated touch pad
- Volume and mute controls
- No wiring needed
- Built-in alarm senses forced entry
- Door re-locks itself if left unlocked
- Weather resistant (tested to IP54)



**S-6000**



**S-480**



**Technical Specifications**

- Weather resistant (tested to IP54)
- Access by user PIN, card, tag or stick-on patch
- Auto re-lock
- Built-in alarm
- Volume and mute controls
- Mortice lock (S-6000)
- Rim lock (S-480)

**Access**

- S-6000**
- Store up to 8 user PINs
- Store up to 20 credentials (card, tag or stick-on-patch)
- S-480**
- Store up to 10 user PINs
- Store up to 50 credentials (card, tag or stick-on-patch)

**Door Specifications**

- Hole Preparation**
- 32mm and 64mm holes (S-6000)
- 32mm (S-480)
- Backset**
- 70mm (S-6000)
- 64mm or 89mm (S-480)
- Door thickness**
- 40mm to 90mm (S-6000)
- 40mm to 50mm (S-480)
- Warranty**
- 2 year mechanical and electronic warranty
- For finish warranties please refer to our website





# Entrance Hardware

A **first impression** that lasts.

# Schlage **Pull Handles**



**Verta™**

● SSS

Fixing Centres (mm)  
Lengths (mm)  
Dimension (mm)

762  
800  
38x18



**Oblong**

● MB ● SSS

450/600  
470/620  
40x20

## Verta - Technical Specifications

- 316 Marine grade stainless steel
- 762mm or 800mm length
- Door thickness**
- Timber or aluminium 30mm to 55mm
- Glass 10mm to 15mm

### Fixing

- Fixing centres 762mm
- Back to back or single fixing
- Sold in pairs

## Warranty

- 10 year mechanical warranty
- For finish warranties please refer to our website

## Oblong - Technical Specifications

- 316 Marine grade stainless steel
- 470mm or 620mm length
- Door thickness**
- Timber or aluminium 35mm to 50mm
- Glass 10 to 15mm

### Fixing

- Fixing centres 430mm or 580mm
- Back to back fixing
- Sold in pairs

## Warranty

- 10 year mechanical warranty
- For finish warranties please refer to our website

**Andor**



Fixing Centres (mm) 300/400/600/800  
 Lengths (mm) 325/425/625/825  
 Dimension (mm) 25x25

**Trento**



600/800/1000  
 620/820/1020  
 40x20

**Dego**



300/450/600/800/1000  
 325/475/625/825/1025  
 25x25

**Turin**



Fixing Centres (mm) 400/600  
 Lengths (mm) 600/800  
 Dimension (mm) 25x25

**Corfu**



250/400/600/800/1000  
 450/600/800/1000/1200  
 Ø32

**Verona\***



300/450/600/800/1000  
 380/530/680/880/1080  
 Ø32

● SBC ● SSS ● PSS (by special request only)

*\*Verona not available in special finishes*

## Technical Specifications

- 316 Marine grade stainless steel
- High quality, electroplated finishes available
- Supplied for back to back fixing
- Other designs and sizes available on indent, price and lead time on application
- Sold in pairs

### Door type:

- Timber, glass or metal

### Door thickness:

- Timber or aluminium 32 to 70mm
- Timber or aluminium 32 to 55mm (Verona)
- Glass 10 to 15mm

## Warranty

- 10 year mechanical warranty
- For finish warranties please refer to our website

# Schlage **Euro Mortice Locks**



**ME60  
Entrance Lock**  
● SSS



**ME60  
Roller Deadlock**  
● SSS

## Technical Specifications

### Door Type

- Aluminium
- Timber

### Door Thickness

- 32 to 42mm
- (When using 65mm cylinder with 10mm escutcheon)
- Extended cylinders available

### Lock Specifications

- ME60 Entrance Lock
- ME60 Roller Deadlock

### Backset

- 60mm

### Follower to turn centre

- 85mm

## Compatible Accessories

- Kits available for mortice lock with cylinder and escutcheon

### Schlage Escutcheons & Turns

- Round Euro escutcheons
- Square Euro escutcheons
- Available in Satin Black Chrome & Satin Stainless Steel

### Cylinders

- ME C4 5 or 6 Pin Euro
- Schlage C5 or 6 Pin Euro

### Rebate Kits

- MERKSS Rebate kit for ME60
- MERKRSS Rebate kit for ME60RL

## Compatible Furniture

- Schlage pull handle range
- Form Series

### Warranty

- 10 year mechanical warranty
- For finish warranties please refer to our website

# Schlage **Euro Profile Cylinders**



**Cylinder and Turn**  
● ABZ\* ● SBC\* ● SCP



**Double Cylinder**  
● SCP

## Technical Specifications

### Euro Profile Cylinders

- Universal applications

### Keyway

- C5 Keyway
- C4 Keyway

### Keying Options

- KA Keyed Alike
- KD Keyed to Differ
- RCK Residential Construction Keyed (C5 Keyway only)

### Door Thickness

- Various lengths available

### Finishes

- Satin Chrome Plate
- \*Antique Bronze and Satin Black Chrome available for the 65mm C5 keyway only

## Warranty

- 10 year mechanical warranty
- For finish warranties please refer to our website



# Schlage **F Series Entrance Sets**



**Addison Entrance Set with Accent Lever**

● SNP



**Camelot Entrance Set with Georgian Knob**

● AB



**Century Entrance Set with Orbit or Plymouth Knobs, or Latitude Lever**

● SCP



● SNP



● PB ● SCP

**Plymouth Entrance Set with Accent Lever or Plymouth Knob**

## Technical Specifications

- ANSI/BHMA certified. Graded best in security, durability and finish (AAA)
- Can be keyed alike to other Schlage locksets

### Door Preparation

- 54mm

### Backset

- 60 or 70mm adjustable latches and deadbolts

### Door Thickness

- 41mm to 51mm

### Cylinder

- Schlage C5

## Functions

- Double cylinder\* (key/key) \*Available for all sets above excluding Addison Entrance Set
- Single cylinder (key/turn)

## Warranty

- Lifetime mechanical warranty
- For finish warranties please refer to our website

## Schlage **Regent Series Entrance Sets**



**Monaco Entrance Set  
with Denver Knob**

● SCP



**Boston Entrance Set  
with Denver Knob**

● SCP

### Technical Specifications

- Can be keyed alike to other Schlage locksets
- Concealed through-fixing
- Triple option square, radius and drive-in latch
- ANSI/BHMA Grade 3 performance

#### Door Preparation

- 54mm

#### Backset

- 60mm or 70mm adjustable latches and deadbolts

#### Door Thickness

- 35mm - 50mm

### Functions

- Double cylinder (key/key)
- Single cylinder (key/turn)

### Warranty

- 25 year mechanical warranty
- For finish warranties please refer to our website

## Schlage **Trilock™ Entrance Set**



Internal



External

**Trilock Urban Entrance Set  
(double cylinder)**

● SCP

### Technical Specifications

#### Door Preparation

- 55mm

#### Backset

- 60mm

#### Door Thickness

- 35mm to 45mm

### Functions

- Can be keyed alike to other Schlage locksets
- Double cylinder (key/key)
- Trilocking**
- Passage mode (unlocked)
- Deadlocking (locked inside and out)
- External locking (locked outside only)

### Warranty

- 10 year mechanical warranty
- For finish warranties please refer to our website
- Cylinder**
- Schlage C5
- Pairing**
- Pairs with internal lever 'Aurora' in the Valor Series on page 33

# Schlage **Deadbolts**



**Round Deadbolt**

● MB ● PB ● SCP ● SNP



**Square Deadbolt**

● MB ● SCP ● SNP

## Technical Specifications

- Can be keyed alike to other Schlage locksets

### Door Preparation

- 54mm

### Backset

- 60mm or 70mm (adjustable)

### Door Thickness

- 35mm to 50mm

### Cylinder

- Schlage C5

## Functions

### Round Deadbolt

- Double cylinder (key/key)

- Single cylinder (key/turn)

### Square Deadbolt

- Single cylinder (key/turn)

## Warranty

- 10 year mechanical warranty

- For finish warranties please refer to our website

# Schlage **Valor Series Deadbolts**



**Single Cylinder Round Deadbolt**

● MB ● SP



**Single Cylinder Square Deadbolt**

● MB ● SP

## Technical Specifications

- Can be keyed alike to other Schlage locksets

### Door Preparation

- 54mm

### Backset

- 60mm

### Door Thickness

- 35mm to 45mm

### Cylinder

- Schlage C5

## Functions

- Double cylinder (key/key)

- Single cylinder (key/turn)

## Warranty

- 10 year mechanical warranty

- For finish warranties please refer to our website

# Schlage **B Series Deadbolts**



## B Series Deadbolt

● AB ● PB ● SCP ● SNP

### Technical Specifications

- ANSI/BHMA certified. Graded best in security, durability and finish (AAA)
- Anti-pick shield
- Unique Snap and Stay™ design for easy installation
- Can be keyed alike to other Schlage locksets

#### Door Preparation

- 54mm

#### Backset

- 60mm or 70mm adjustable and 127mm bolt available

#### Door Thickness

- 35mm to 44mm (extension kit available)

#### Cylinder

- Schlage C5

### Functions

- Double cylinder (key/key)
- Single cylinder (key/turn)

### Warranty

- Lifetime mechanical warranty
- For finish warranties please refer to our website

# Schlage **Regent Series Deadbolts**



## Regent Boston

● SCP



## Regent Denver

● CP ● PB ● SCP ● SNP ● SSS

### Technical Specifications

- Increased bolt size and bolt engagement offers maximum kick-in resistance
- Larger thumb turn for easier grip
- Can be keyed alike to other Schlage locksets

#### Door Preparation

- 54mm

#### Backset

- 60mm or 70mm adjustable

#### Door Thickness

- 35mm to 50mm

#### Cylinder

- Schlage C5

### Functions

- Double cylinder (key/key)
- Single cylinder (key/turn)

### Warranty

- 25 year mechanical warranty
- For finish warranties please refer to our website





# Levers and Knobs

A detail that makes a **statement.**



## Designer style

Schlage Verta™ reinvents the classic with contemporary design. Stemming from modern trends, Verta blends beautiful form with designer functionality.

Verta's design features set a new standard for innovative style. Architectural lines create surfaces that reflect light in every direction; tactile surfaces surprise and delight; lineal planes soften to curved edges.

Each element of Verta has been sourced, crafted and finished by experts. Constructed from the highest-quality, marine-grade 316 stainless steel, Verta is manufactured and finished with watch-maker precision.

Verta is an investment in style for now and the future.

## Features and benefits

- Constructed from marine-grade stainless steel gives Verta strength, presence and lasting beauty
- Straight edges transition to gently rounded backs, curving into your hand and creating a soft touching point
- Enhance your home inside and out from the striking pull handle (page 13) to the internal furniture
- Tested to precision to endurance standards of 200,000 cycles



**External Flush Pull**

● SSS



**Internal Lever**

● SSS



**Privacy Turn**

● SSS



**Escutcheons**

● SSS

**Technical Specifications**

- 316 Marine grade stainless steel

**Rose Specifications**

- 57mm x 57mm x D12mm

**Door Preparation**

- 35mm

**Backset**

- 60mm (70mm available)

- Suitable to use furniture set with mortice locks

**Door Thickness**

- Passage 35mm to 50mm

- Privacy 35mm to 45mm

- Pull handle 30mm to 55mm

**Functions**

- Furniture set, passage, privacy and dummy trim

**Warranty**


- 10 year mechanical warranty

- For finish warranties please refer to our website



**Albo**  
● SSS



**Alpha**   
● SSS



**Angelo**  
● SSS



**Carrillo**  
● SSS



**Costa**   
● SSS



**Kanso**  
● SSS



**Marco**  
● SSS



**Moretto**  
● SSS



**Picasso**  
● SSS



**Stefano**  
● SSS



**Telo**   
● SSS

## Square Rose Cap

All Form levers are also available with a square rose cap which is sold separately



**Carrillo (Square Rose)**  
● SSS



**Kanso (Square Rose)**  
● SSS

### Technical Specifications

- 304 Grade solid stainless steel levers

#### Rose Specifications

- Ø57mm
- Concealed fixing

#### Door Preparation

- QuickFix™ 25mm

#### Backset

- 60mm

#### Door Thickness

- Furniture 30mm to 55mm; Passage 30mm to 50mm;  
Privacy 30mm to 42mm

### Functions

- Furniture set, passage, privacy and dummy trim
- Furniture set works with Legge 990 Mortice Lock and other compatible mortice locks

### Warranty

- 10 year mechanical warranty
- For finish warranties please refer to our website



**Alba**  
● BSC



**Centra**   
● BSC



**Rivera**  
● ABC ● BSC ● MB



**Sierra**  
● ABC ● BSC ● MB



**Stella**  
● BSC

**Technical Specifications**

**Rose Specifications**

- Ø55mm
- Concealed fixing

**Door Preparation**

- QuickFix™ 25mm

**Backset**

- 60mm

**Door Thickness**

- Passage 30mm to 50mm
- Privacy 32mm to 42mm

**Functions**

- Passage, privacy and dummy trim

**Warranty**

- 10 year mechanical warranty
- For finish warranties please refer to our website



**Alba**  
● SCP



**Centra**  
● SCP



**Stella**  
● SCP

**Technical Specifications**

**Rose Specifications**

- Ø64mm
- Concealed fixing

**Door Preparation**

- 30mm or 54mm

**Backset**

- 60mm

**Door Thickness**

- Furniture 32mm to 50mm
- Passage 32mm to 50mm
- Privacy 32mm to 42mm

**Functions**

- Furniture set, passage, privacy and dummy trim

**Warranty**

- 10 year mechanical warranty
- For finish warranties please refer to our website







**Accent**  
● SNP



**Elan**  
● SCP



**Flair**  
● SCP



**Latitude**  
● MB ● SCP



**Manhattan**  
● SCP



**Century Latitude**  
● MB ● SNP

**Technical Specifications**

- ANSI/BHMA certified. Graded best in security, durability and finish (AAA)

**Rose Specifications**

- Ø65mm

**Door Preparation**

- 54mm

**Backset**

- 60mm or 70mm (adjustable)

**Door Thickness**

- 36mm to 44mm

**Functions**

- Entrance, passage, privacy and dummy trim

**Warranty**

- Lifetime mechanical warranty

- For finish warranties please refer to our website



**Angular Square**

● MB ● SP



**Angular Round**

● MB ● SP



**Aurora**

● SCP

**Technical Specifications**

**Rose Specifications**

- Ø68mm square rose
- Ø65mm round rose

**Door preparation**

- 54mm

**Backset**

- 60mm

**Door Thickness**

- 32mm to 45mm

**Functions**

- Passage, privacy and dummy trim

**Warranty**

- 10 year mechanical warranty
- For finish warranties please refer to our website



**Alyssia**  
● MB ● SCP



**Elena**  
● MB ● SCP



**Sofia**  
● SCP

**Technical Specifications**

**Rose Specifications**

- Ø53mm

**Door preparation**

- 35mm

**Backset**

- 60mm

**Door Thickness**

- 35mm to 45mm

**Functions**

- Passage, privacy and dummy trim

**Warranty**

- 10 year mechanical warranty

- For finish warranties please refer to our website



**Amelia**  
 ● MB ● SCP



**Bailey**  
 ● SCP



**Carla**  
 ● MB ● SCP



**Florence**  
 ● SCP



**Lianna**  
 ● MB ● SCP

**Technical Specifications**

**Rose Specifications**

- Ø63mm

**Door preparation**

- 54mm

**Backset**

- 60mm

**Door Thickness**

- 32mm to 45mm

**Functions**

- Passage, privacy and dummy trim

**Cylinder**

- Schlage C5

**Warranty**

- 10 year mechanical warranty

- For finish warranties please refer to our website



**Boston**  
● SCP



**Jupiter**  
● SCP ● SNP



**Leonardo**  
● SCP ● SNP



**Orlando**  
● SCP



**Rubens**  
● SCP ● SNP

**Technical Specifications**

**Rose Specifications**

- Ø65mm (round)
- 60mm x 60mm (square)
- Concealed fixing

**Door Preparation**

- 54mm

**Backset**

- 60mm or 70mm (adjustable)

**Door Thickness**

- 35mm to 50mm

**Cylinder**

- Schlage C5

**Functions**

- Entrance, passage, privacy and dummy trim

**Warranty**

- 25 year mechanical warranty
- For finish warranties please refer to our website

## Schlage **F Series**



**Bowery**

● MB



**Georgian**

● AB



**Orbit**

● SCP



**Plymouth**

● PB ● SCP

## Schlage **Classic Series**



**Classic**

● BG ● CP ● SP



**Classic**

● BG ● CP ● SP



**Classic**

● BG ● CP ● SP



**Classic Diplomat**

● BG ● SP



**Classic Diplomat**

● BG ● SP

## Schlage **Regent Series**



**Denver**

● CP ● PB ● SSS



**Denver**

● CP ● PB ● SSS



**Denver**

● CP ● PB ● SSS



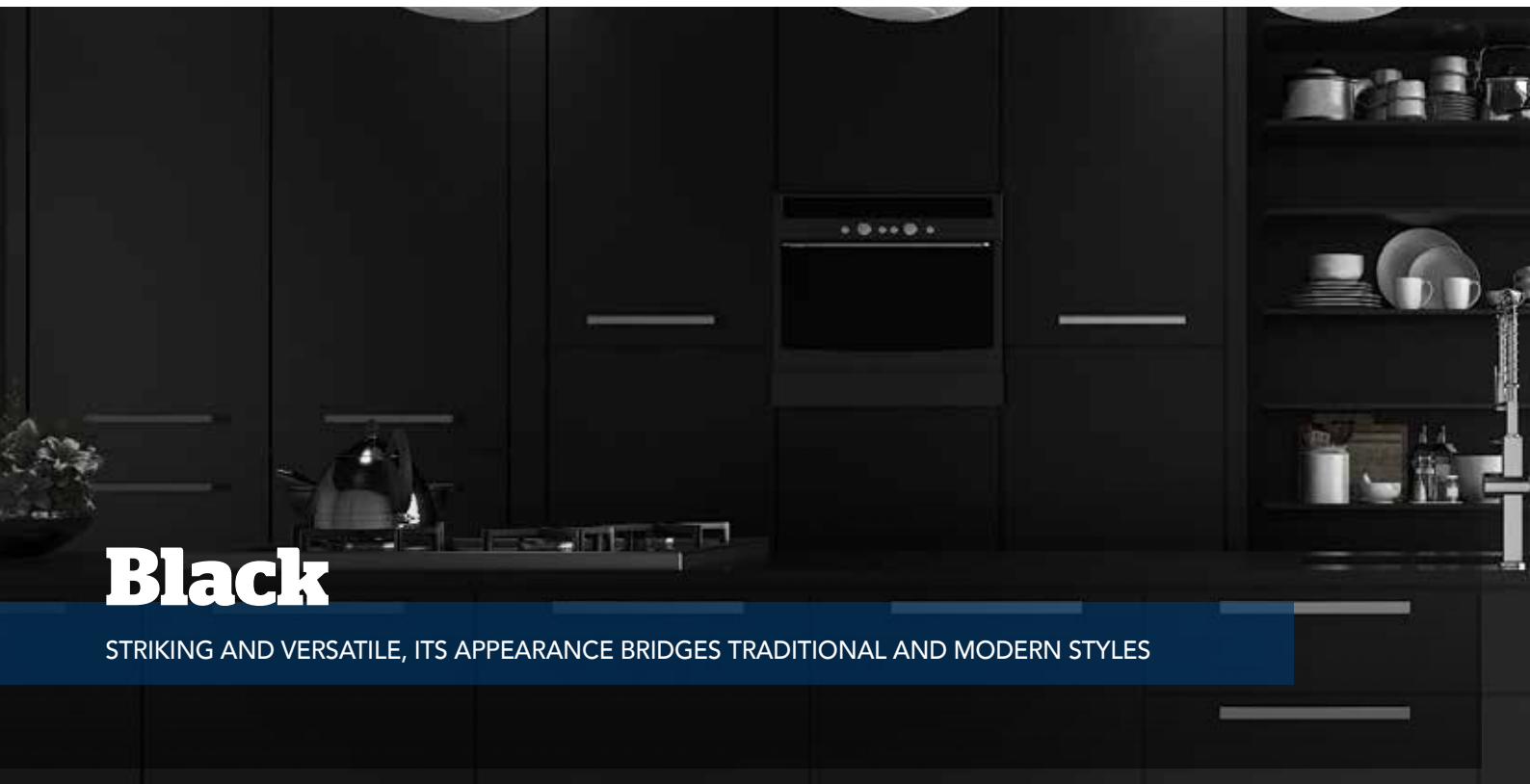
**Terrace**

● SSS

## Schlage **Element Series**

F Series	Classic Series	Regent Series	Element Series
<ul style="list-style-type: none"> <li>- Lifetime mechanical warranty</li> <li>- For finish warranties please refer to our website</li> <li>- <b>Door preparation:</b> 54mm</li> <li>- <b>Backset:</b> 60 or 70mm adjustable latches</li> <li>- <b>Door thickness:</b> 35mm to 44mm</li> <li>- <b>Cylinder:</b> Schlage C5</li> <li>- ANSI/BHMA certified. Graded best in security, durability and finish (AAA)</li> </ul>	<ul style="list-style-type: none"> <li>- 10 year mechanical warranty</li> <li>- For finish warranties please refer to our website</li> <li>- <b>Door preparation:</b> 60mm</li> <li>- <b>Backset:</b> 60 or 70mm adjustable latches</li> <li>- <b>Door thickness:</b> 35mm to 45mm</li> </ul>	<ul style="list-style-type: none"> <li>- 25 year mechanical warranty</li> <li>- For finish warranties please refer to our website</li> <li>- <b>Door preparation:</b> 54mm</li> <li>- <b>Backset:</b> 60 or 70mm adjustable latches</li> <li>- <b>Door thickness:</b> 35mm to 50mm</li> <li>- <b>Cylinder:</b> Schlage C5</li> <li>- Ø65mm round rose</li> <li>- ANSI/BHMA Grade 3 performance</li> </ul>	<ul style="list-style-type: none"> <li>- 10 year mechanical warranty</li> <li>- For finish warranties please refer to our website</li> <li>- <b>Door preparation:</b> 54mm</li> <li>- <b>Backset:</b> 60mm</li> <li>- <b>Door thickness:</b> 35mm to 45mm</li> <li>- <b>Cylinder:</b> Schlage C5</li> <li>- Ø63mm round rose</li> </ul>

Schlage be **BOLD** with black



**Black**

STRIKING AND VERSATILE, ITS APPEARANCE BRIDGES TRADITIONAL AND MODERN STYLES

## Schlage **Front Entrance Kits**



**Encode Oblong Entrance Set**

● MB ● SNP/SSS

**Ease S1 Oblong Entrance Set**

● MB

## Schlage **Front Entrance Kits**



**Encode Century Latitude Entrance Set**

● MB ● SNP



**Encode Latitude Lever Set**

● MB ● SNP

## Schlage **Accessories**



**Square Cavity Slider**



**Round Cavity Slider**



**Finger Pull**



**Round Door Stop**



**Door Viewer**



**Square Turn**



**Flush Pull**

*\*See our range of matching accessories on pages 47-50*

Schlage be **BOLD** with black

## Schlage **Medio Series**



**Rivera**

● ABC ● BSC ● MB



**Sierra**

● ABC ● BSC ● MB

## Schlage **Valor Series**



**Angular Square**

● MB ● SP



**Angular Round**

● MB ● SP

## Schlage **Moda Series**



**Alyssia**

● MB ● SCP



**Elena**

● MB ● SCP

## Schlage **Element Series**



**Amelia**  
● MB ● SCP

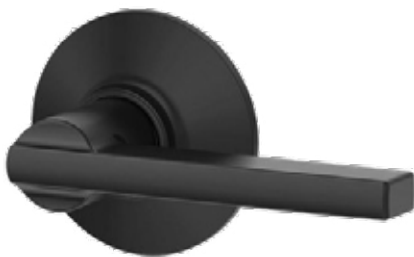


**Carla**  
● MB ● SCP



**Lianna**  
● MB ● SCP

## Schlage **F Series**



**Latitude**  
● MB ● SCP



**Century Latitude**  
● MB ● SNP



**Bowery**  
● MB





# Sliding Door Hardware

**Opening more** than just doors.

# Schlage **Stella™ Sliding Door Lock**

## Standard



**Non-key locking (snib only)**  
● B



**External locking**  
● B



**Deadlocking with daylatch**  
● B



**Dummy**  
● B

## Slimline



**Non-key locking (snib only)**  
● B



**External locking**  
● B



**Dummy**  
● B

## Schlage Stella™ Design Features and Benefits

- TwinSecure®** Adds security through twin activating jaws / provides locking by snib or key
- SlamStop®** Protects locking jaws from accidental damage / offers childproofing / prevents accidental lockout
- ErgoDesign®** Suits left or right hand door applications / improves grip and feel of handle / favoured through rigorous consumer testing
- MultiFix®** Adds security through adjustable concealed strike with stainless steel receiver plate and multiple fixing points / suits new and retrofit applications
- MultiFunction®** Provides non key locking, key locking and dummy

Technical Specifications	Functions	Warranty
<b>Door Thickness</b> - 30mm to 50mm <b>Cylinder Options</b> - Standard C5 or C4 cylinders available	- Deadlocking - External locking - Locking by snib only - Dummy	- 10 year mechanical warranty - For finish warranties please refer to our website

## Brio **Open Bar Rail 80**



Technical Specifications	Features	Warranty
<ul style="list-style-type: none"> <li>- <b>Max door weight:</b> 80kg</li> <li>- <b>Door thickness:</b> 35mm to 44mm</li> <li>- <b>Max door width:</b> 1100mm</li> <li>- <b>Rail colours:</b> <ul style="list-style-type: none"> <li>- Powder Coat Black</li> <li>- Satin Stainless Steel</li> <li>- Antique Bronze (matches closely to Aged Brushed Copper)</li> </ul> </li> </ul>	<ul style="list-style-type: none"> <li>- Easy installation</li> <li>- Precision bearing and nylon tyre rolls smoothly over a flat bar rail</li> <li>- Standard kits include length of rail, door hangers, door stops and guide (single panel)</li> <li>- Joining bracket available for bi-parting applications (two kits)</li> <li>- Optional soft close accessory</li> </ul>	<ul style="list-style-type: none"> <li>- 10 year mechanical warranty</li> <li>- For finish warranties please refer to our website</li> </ul>

## Brio **Wardrobe Roll 50**



Technical Specifications	Features	Warranty
<ul style="list-style-type: none"> <li>- <b>Max door weight:</b> 50kg per panel</li> <li>- <b>Door thickness:</b> 30mm to 40mm</li> <li>- <b>Trim height:</b> Panel height + 37mm</li> <li>- <b>Track colours:</b> Pearl White and Clear Anodised</li> </ul>	<ul style="list-style-type: none"> <li>- Superior quality running hardware</li> <li>- Simple, clean look with whisper quiet operation</li> <li>- Easy fix double or triple track</li> <li>- Optional soft close accessory</li> </ul>	<ul style="list-style-type: none"> <li>- 10 year mechanical warranty</li> <li>- For finish warranties please refer to our website</li> </ul>





# General Hardware

The **finishing touch.**

# Schlage **Wall Mounted Door Stops**



**Round Post**  
**75mm Projection**  
● SSS



**Round Post**  
**77mm Projection**  
● MB ● SCP ● SP ● SNP ● SSS



**Round Post**  
**80mm Projection**  
● SSS



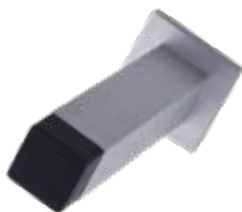
**Round Post**  
**85mm Projection**  
● ABC ● MB ● SNP ● SP



**Round Post**  
**110mm Projection**  
● SNP ● SP



**Square Post**  
**76mm Projection**  
● SSS



**Square Post**  
**85mm Projection**  
● MB ● SCP ● SP ● SSS



**Round Post magnetic**  
**75mm Projection**  
● SNP



**Round Post magnetic**  
**85mm Projection**  
● MB ● SNP



**Round Post Hold Open**  
**75mm Projection**  
● SP



**Round Post Latch Back**  
**75mm Projection**  
● MB ● SCP



**Square Post Latch Back**  
**75mm Projection**  
● MB ● SCP

## Warranty

- 10 year mechanical warranty
- For finish warranties please refer to our website

# Schlage **Floor Mounted Door Stops**



**Round Door Stop**  
38mm high x 50mm Diameter  
● SP



**Round Door Stop**  
40mm high x 45mm Diameter  
● ABC ● MB ● SSS



**Round Door Stop**  
60mm high x 45mm Diameter  
● SSS



**Round Door Stop**  
40mm high x 35mm Diameter  
● SNP



**Dome Door Dtop**  
45mm Diameter  
● MB ● SCP ● SP



**Square Door Stop**  
40mm high x 40mm Diameter  
● SSS



**Square Door Stop**  
40mm high x 40mm Diameter  
● SNP



**Round Magnetic Door Stop**  
40mm High  
● SNP



**Round Magnetic - Hold Open**  
75mm High x 50mm Diameter  
● SCP ● SNP

## Warranty

- 10 year mechanical warranty
- For finish warranties please refer to our website

# Schlage & Legge **Cavity Sliding Hardware**



**Schlage Square Passage**  
Cavity Slider  
● MB ● SP



**Schlage Square Privacy**  
Cavity Slider  
● MB ● SP



**Schlage Round Passage**  
Cavity Slider  
● ABC ● MB ● SCP ● SP



**Schlage Round Privacy**  
Cavity Slider  
● ABC ● MB ● SCP ● SP



**Schlage Passage Sliding**  
Door Lock  
● SCP



**Schlage Privacy Sliding**  
Door Lock  
● SCP



125 x 30mm

**Schlage Face Fixing Rectangular**  
Flush Pull - Rounded  
● SP



115 x 35mm

**Schlage Face Fixing Rectangular**  
Flush Pull - Square  
● SP



120 x 50mm  
and  
150 x 50mm

**Schlage Concealed Fixing**  
Rectangular Flush Pull - Rounded  
● SSS



120 x 50mm  
and  
150 x 50mm

**Schlage Concealed Fixing**  
Rectangular Flush Pull - Square  
● SSS



100 x 50mm

**Legge 1962 Flush Pull**  
● SSS



120 x 35mm

**Legge 1964 Flush Pull**  
● SSS



180 x 45mm

**Legge 180 Flush Pull**  
● ABC ● MB ● SSS



**Legge Finger Pull Round**  
● SSS



**Legge Finger Pull Square**  
● MB ● SSS

## Technical Specifications

### Door Preparation

- Varies - refer to the Price Book or enquire with our team

### Door Thickness

- Varies - refer to the Price Book or enquire with our team

## Functions

- Varies - refer to the Price Book or enquire with our team

## Warranty

- 10 year mechanical warranty  
- For finish warranties please refer to our website



**Legge Heavy Duty Roller Catch**

● MB ● SSS



**Schlage Roller Catch**

● CP ● PB ● SCP



**Schlage Magnetic Door Catch**

● CP



**Schlage Reverse Barrel Bolt (125mm)**

● SCP



**Schlage Door Viewer**

● ABZ ● CP ● MB ● SCP



**Schlage Hat and Coat Hook**

● SSS

**Technical Specifications**

**Door Preparation**

- Varies - refer to the Price Book or enquire with our team

**Door Thickness**

- Varies - refer to the Price Book or enquire with our team

**Functions**

- Varies - refer to the Price Book or enquire with our team

**Warranty**

- 10 year mechanical warranty  
- For finish warranties please refer to our website





## Common Terms

**Backset** - the distance from the edge of the door to the centre of the hole for your lever or knob.

**Concealed magnetic catch** - magnets concealed in the jamb to hold the door shut. Usually used with a dummy trim in a wardrobe or cupboard application.

**Cylinder** - the cylindrical shaped mechanism housed within door locks that contains the tumbler and keyway, into which a key is inserted to operate the lock.

**Deadbolt** - a bolt engaged by turning a knob or key, rather than by spring action.

**Door Preparation** - the cut-outs or holes made to the door for the lock and/or lever being installed.

**Dummy / dummy trim** - A face fixing lever or knob that matches your passage and privacy sets, for a cupboard or wardrobe door. Usually sold as singles not pairs and does not come with a latch.

**Escutcheon** - a cap that covers the base of a key cylinder (not to be confused with Rose as below).

**Jamb** - the frame that surrounds the door in the doorway.

**Latch** - the mechanism that slides into the edge of the door and retracts or protrudes with the turn of the doorknob or lever. The latch keeps the door closed and allows it to open.

**Mortice Lock** - a lock which is set within the body of a door in a recess or mortice, as opposed to one attached to the door surface.

**Night latch / Rim lock** - a lock that is fitted on the surface of a door. It is operated from the exterior side of the door by a key and from the interior side of the door by a turn or small knob.

**Rose** - a cap that covers the base of a door handle allowing concealed fixing screws.

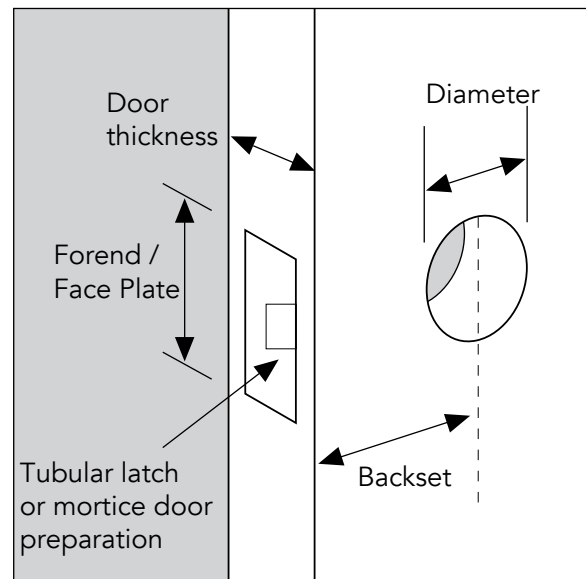
**Roller catch** - has a spring-loaded roller held within a cylinder attached to a flange. The catch is recessed into the edge of the door while the striker plate is recessed into the jamb. Usually used with a dummy trim or pull handle.

**Stile** - the vertical edge of the door where door furniture is fixed. A thin stile i.e. one with a glass pane near the edge of the door may have implications for which backset can be used.

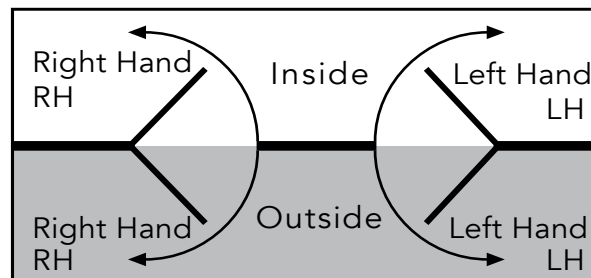
**Strike / Strike plate** - the metal piece attached to the door jamb. As the door closes, the latch mechanism strikes the plate mounted to the jamb and the strike plate catches the mechanism and holds the door closed.

**Turn** - a small interior piece that can be turned with your finger and thumb to lock or unlock a door lock.

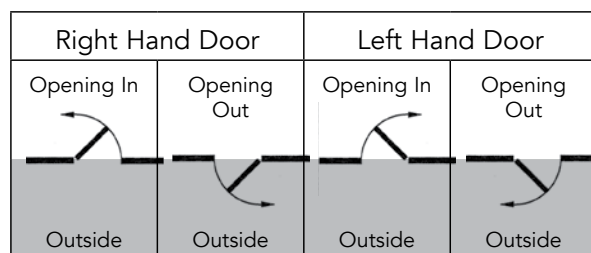
## Door Preparation Guide



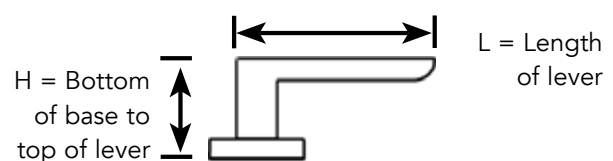
## Lever Handling Guide



## Hinge Handling Guide



## Lever Dimension Guide





**AB**

Antique Brass



**ABC**

Aged Brushed  
Copper



**ABZ**

Antique Bronze



**B/MB**

Black/Matt  
Black



**CP**

Chrome Plate



**ORB**

Oil Rubbed  
Bronze



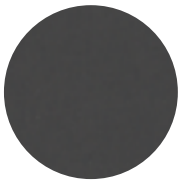
**PB/BG**

Polished Brass/  
Bright Gold



**PS**

Polished Steel



**SBC**

Satin Black  
Chrome



**SCP/BSC**

Satin Chrome  
Plate/Brushed  
Satin Chrome



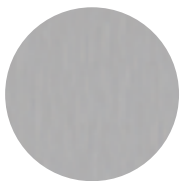
**SNP**

Satin Nickel  
Plate



**SP**

Satin Pearl



**SSS**

Satin Stainless  
Steel

## Keying Services

**C4 and C5 Keyways** – The Schlage “C” keyway key blank C5 (5 pin) is part of the Schlage keyway family and is the default keyway used in Schlage Residential locks. The classic “C” keyway provides security with no restrictions on key duplications.

The C4 (5-pin) keyway is useful when keying alike to existing locks that are not from Schlage, as it is a keyway used by other hardware brands.

**Residential Construction Keying** - RCK system, involves a single key, replicated to be used by tradesmen for all homes during the construction phase. Building companies will be supplied 25 keys free (additional keys by negotiation), which can be reused on future houses/apartments. Each building company receives a personalised RCK system, so no two building companies have the same keys. When the new homeowner takes over the house, they are presented with their own keys, which, when used, automatically resets the lock cylinder, making the RCK inoperable and providing the homeowner final ownership and security.

**Master Keying** – Master Keying is a method of controlling access through a building. A key schedule is prepared from provided floor plans. It includes a key matrix, which locates keys and locks and their distribution and usability. Security is based on a system where one lock has its own key. This key will not operate any other locks in the property/building, however where all locks are in the same property/building the locks can be operated by the one master key.

**Keyed Alike** – KA - More than one lock being operated by the same key.

**Keyed To Differ** – KD – One lock is opened with a single key.

**Standard Master Keying vs Restricted** - With a non-restricted key (standard / open key), keys can be duplicated by any standard key cutting personnel. However, the ability for someone to cut a master key without knowledge of the origin or ownership of the key, is a risk that should be considered.

With the restricted key, the key blanks are restricted to approved locksmiths only. Keys cannot be cut without authorisation, which allows enhanced security, total key control and accurate record keeping of keys cut to date. Record keeping is maintained on a database which is held by the locksmith.

# Index

## Schlage Keyless Entrance Hardware / Smart Locks

Product Name	Black	Satin Nickel Plate	Page
Schlage Encode™ Smart Wi-Fi Deadbolt	SRE60120	SRE60121	6
Encode Oblong entrance set with turn	SRSGE-600TMB SRGE-450TMB	SRSGE-600TSS SRGE-450TSS	6
Encode Century Latitude entrance set	SRS60MB	SRS60SNP	6
Encode Latitude Lever set	SRE60130	SRE60131	6
Encode Extension kit for doors from 47mm to 64mm		SRE60124	6
Encode Rebate kit		SLP23674	6
Ease S1 Smart Deadbolt	SREEAS1C5BL		8
Ease S2 Smart Entry Lock	SREEAS2C5BL		8
Ease Abode Wi-Fi Bridge (white)		SREAB001	8
S-6000	S-6000		10
S-480	S-480		10

## Schlage Pull Handles

Special finish: SBC. Code will follow the SSS format e.g. SBC finish S316-3-600-SBC

Exceptions: Oblong - only available in 316 SSS and powder coat black; and Verta - only available in 316 SSS

Lead time: Allow 30 working days for special finish orders. Minimum order charges may apply

Product Name	Length (mm)	Satin Stainless Steel	Page
Verta	800	SSS16000	13
Oblong	470 (SSS) 620 (SSS) 470 (MB) 600 (MB)	SRGPHOBSS-470 SRGPHOBSS-620 SRGPHOBMB-470 SRGPHOBMB-620	13
Andor	325 425 625 825	S316-1-325-SSS S316-1-425-SSS S316-1-625-SSS S316-1-825-SSS	14
Trento	620 820 1020	S316-4-620-SSS S316-4-820-SSS S316-4-1020-SSS	14
Deigo	325 475 625 825 1025	S316-2-325-SSS S316-2-475-SSS S316-2-625-SSS S316-2-825-SSS S316-2-1025-SSS	14
Turin	600 800	S316-3-600-SSS S316-3-800-SSS	14
Corfu	450 600 800 1000 1200	S316-7-450-SSS S316-7-600-SSS S316-7-800-SSS S316-7-1000-SSS S316-7-1200-SSS	14
Verona	380 530 680 880 1080	S316-5-380-SSS S316-5-530-SSS S316-5-680-SSS S316-5-880-SSS S316-5-1080-SSS	14
Single Side Fixing Kit	Alum. / Timber DAXF31SSS-A	Glass DAXF31SSS-G	13-14

## Schlage Euro Mortice Locks

Product Name	Follower to turn centre	Satin Stainless Steel	Page
ME60 Entrance Lock	85mm	ME60TUSSS	15
ME60 Roller Deadlock		ME60TRLS	15

Note: More variations available; see the Price Book or enquire with our team.

## Schlage Euro Cylinders

Product Name	Length (mm)	Keying*	Satin Chrome Plate	Page
Euro Cylinder and turn C5 pin	65	KD	SRP32068**	15
Euro Cylinder and turn C5 pin	65	KA	SRP32072**	15

\*\*To order either of the above cylinders in Satin Black Chrome or Antique Bronze, add -SBC or -ABZ to the end of the code shown above.

Euro Double cylinder C5 pin	65	KD	SRP32067	15
Euro Double cylinder C5 pin	65	KA	SRP32071	15
Euro Single half cylinder C5 pin	42.5	KD	SRP32065	15
Euro Cylinder and turn C5 pin	80	KD	SRP32989	15
Euro Double cylinder C6 pin	80	KD	SRP3A144	15
ME Euro 5 pin Cylinder and turn C4	60	KD	ME5CTS	15
ME Euro 5 pin Cylinder and turn C4 - KA1 to KA20	60	KA	ME5CTSCKA	15
ME Euro 5 pin Double cylinder C4	60	KD	ME5DCS	15
ME Euro 5 pin Double cylinder C4 - KA1 to KA20	60	KA	ME5DCSCKA	15
ME Euro 6 pin Cylinder and turn C4	70	KD	ME6CTS	15
ME Euro 6 pin Cylinder and turn C4 - KA1 to KA20	70	KA	ME6CTSCKA	15
Euro profile cylinder Emergency release turn - privacy	65		ME5ETSCP	15
Euro profile cylinder Half turn only	42.5		ME5TS	15
Euro profile cylinder Half cylinder only	42.5		ME5SCS	15

\*KD = Keyed to differ and KA = Keyed alike

## Schlage F Series Entrance Sets

Product Name	Finish	Code	Page
<b>Addison Entrance Set</b> <u>Accent Lever</u> F60 Single cylinder and turn	Satin Nickel Plate	SRL14228	17
<b>Camelot Entrance Set</b> <u>Georgian Knob</u> F60 Single cylinder and turn F62 Double cylinder	Antique Brass Antique Brass	SRL14222 SRL14223	17
<b>Century Entrance Set</b> <u>Orbit Knob</u> F60 Single cylinder and turn F62 Double cylinder <u>Plymouth Knob</u> F60 Single cylinder and turn F62 Double cylinder <u>Latitude Lever</u> F62 Double cylinder	Satin Chrome Plate Satin Chrome Plate Satin Chrome Plate Satin Chrome Plate Satin Chrome Plate	SRL14214 SRL14217 SRL14215 SRL14218 SRL32341	17
<b>Plymouth Entrance Set</b> <u>Accent Lever</u> F60 Single cylinder and turn F62 Double cylinder <u>Plymouth Knob</u> F60 Single cylinder and turn F60 Single cylinder and turn F62 Double cylinder F62 Double cylinder	Satin Nickel Plate Satin Nickel Plate Polished Brass Satin Chrome Plate Polished Brass Satin Chrome Plate	SRL14224 SRL14225 SRL14226 SRL14216 SRL14227 SRL14294	17

## Schlage Regent Series Entrance Sets

Product Name	Finish	Code	Page
<b>Monaco Entrance Set with Denver Knob</b> R60 Single cylinder and turn includes Denver knob R62 Double cylinder includes Denver knob	Satin Chrome Plate Satin Chrome Plate	RMENTGSS RMENTGDS	18
<b>Boston Entrance Set with Denver Knob</b> R60 Single cylinder and turn includes Denver knob R62 Double cylinder includes Denver knob	Satin Chrome Plate Satin Chrome Plate	RBENTGSS RBENTGDS	18

## Schlage Trilock™ Entrance Set

Product Name	Finish	Code	Page
Trilock Urban entrance set (double cylinder)	Satin Nickel Plate	SRGTLURSC	18

## Schlage Deadbolts

Product Name	Finish	Code	Page
Single cylinder and turn round deadbolt	Matt Black Polished Brass Satin Chrome Plate Satin Nickel Plate	SRL4RSMB SRL4RSPB SRL4RSSC SRLRSSN	19
Double cylinder round deadbolt	Matt Black Polished Brass Satin Chrome Plate Satin Nickel Plate	SRL4RDMB SRL4RDPB SRLRDSC SRL4RDSN	19
Single cylinder and turn square deadbolt	Matt Black Satin Chrome Plate Satin Nickel Plate	SRL4SSMB SRL4SSSC SRL4SSSN	19

## Schlage Valor Series Deadbolts

Product Name	Finish	Code	Page
Single cylinder round deadbolt	Matt Black	SRG2RDBMB	19
Single cylinder round deadbolt	Satin Pearl	SRG2RDBSP	19
Single cylinder square deadbolt	Matt Black	SRG2SDBMB	19
Single cylinder square deadbolt	Satin Pearl	SRG2SDBSP	19

## Schlage B Series Deadbolts

Product Name	Finish	Code	Page
F51 Plymouth entrance lock and B62 deadbolt - keyed alike	Satin Chrome Plate	SRL14231	20
B60 Single cylinder and turn	Antique Brass Polished Brass Satin Chrome Plate Satin Nickel Plate	SRL14212 SRL14204 SRL14206 SRL14205	20
B62 Double cylinder	Antique Brass Polished Brass Satin Chrome Plate Satin Nickel Plate	SRL14213 SRL14207 SRL14209 SRL14208	20

## Schlage B Series Deadbolt Accessories

Product Name	Finish	Code	Page
127mm bolt	Satin Chrome Plate	SLP26105	20
Rebate kit for B Series	Satin Chrome Plate	SLP23674	20
Extension kit 60mm - 100mm (for single cylinder only)	Polished Brass Satin Chrome Plate	SRP32214 SRP32213	20

# Index

## Schlage Regent Series Deadbolts

Product Name	Finish	Code	Page
<b>Regent Boston</b>			20
R160 Single cylinder and turn	Satin Chrome Plate	RBBOLTS	
R162 Double cylinder	Satin Chrome Plate	RBBOLTDS	
<b>Regent Denver</b>			20
R160 Single cylinder and turn	Chrome Plate Polished Brass Satin Chrome Plate Satin Nickel Plate Satin Stainless Steel	RDBOLTSC RDBOLTSP RDBOLTSSCP RDBOLTSSNP RDBOLTSS	
R162 Double cylinder	Chrome Plate Polished Brass Satin Chrome Plate Satin Nickel Plate Satin Stainless Steel	RDBOLTDC RDBOLTDP RDBOLTDCP RDBOLTDSNP RDBOLTDS	

## Schlage Verta Series

Product Name	Satin Stainless Steel	Page
<b>Flush Pull</b> 250mm long - for aluminium doors only	SSS15002	24
<b>Internal Lever</b>		24
Furniture set	SSS11000	
Passage set - includes latch	SSS11002	
Single dummy trim	SSS11004	
<b>Privacy Turn</b>		24
Privacy bolt set - includes bolt and turn set	SSS11020	
Privacy turn set - turn set only	SSS11005	
<b>Escutcheons</b>		24
Oval cylinder escutcheon (Square single)	SSS11008	
Euro cylinder escutcheon (Square single)	SSS11012	
Slimline euro cylinder escutcheon (Rectangle single)	SSS15004	

For Verta pull handle codes, see page 53 - Pull Handles

## Schlage Form Series Levers

Product Name	Satin Stainless Steel	Page
<b>Albo</b>		25
Furniture set	SRL70ALSS	
Passage set	SRL71ALSS	
Privacy set	SRL72ALSS	
Single dummy trim	SRL73ALSS	
<b>Alpha</b>		25
Furniture set	SRL70AASS	
Passage set	SRL71AASS	
Privacy set	SRL72AASS	
Single dummy trim	SRL73AASS	
<b>Angelo</b>		25
Furniture set	SRL70ANSS	
Passage set	SRL71ANSS	
Privacy set	SRL72ANSS	
Single dummy trim	SRL73ANSS	
<b>Carillo</b>		25
Furniture set	SRL70CASS	
Passage set	SRL71CASS	
Privacy set	SRL72CASS	
Single dummy trim	SRL73CASS	
<b>Costa</b>		25
Furniture set	SRL70CTSS	
Passage set	SRL71CTSS	
Privacy set	SRL72CTSS	
Single dummy trim	SRL73CTSS	
<b>Kanso</b>		25
Furniture set	SRL70KNSS	
Passage set	SRL71KNSS	
Privacy set	SRL72KNSS	
Single dummy trim	SRL73KNSS	
<b>Marco</b>		25
Furniture set	SRL70MASS	
Passage set	SRL71MASS	
Privacy set	SRL72MASS	
Single dummy trim	SRL73MASS	
<b>Moretto</b>		25
Furniture set	SRL70MRSS	
Passage set	SRL71MRSS	
Privacy set	SRL72MRSS	
Single dummy trim	SRL73MRSS	
<b>Picasso</b>		26
Furniture set	SRL70PCSS	
Passage set	SRL71PCSS	
Privacy set	SRL72PCSS	
Single dummy trim	SRL73PCSS	
<b>Stefano</b>		26
Furniture set	SRL70SFSS	
Passage set	SRL71SFSS	
Privacy set	SRL72SFSS	
Single dummy trim	SRL73SFSS	
<b>Telo</b>		26
Furniture set	SRL70TESS	
Passage set	SRL71TESS	
Privacy set	SRL72TESS	
Single dummy trim	SRL73TESS	

## Schlage Form Series Accessories

Product Name	Satin Stainless Steel	Page
Lever square rose cover single	SRL71AXSS	25-26
Lever square rose cover pair (privacy RH)	SRL72AXSSR	
Lever square rose cover pair (privacy LH)	SRL72AXSSL	
Lever round rose cover single	SRL71AYSS	25-26
Lever round rose cover pair (privacy)	SRL72AYSS	
Privacy latch - 60mm	SRL72AZSS	25-26
Passage latch - 60mm	SRL71AZSS	25-26
Universal rebate kit	SRL14340	25-26
T-Strike and dust box	SRL75AXSS	25-26
Form standard privacy pin	ZQF218	25-26
QuickFix™ door preparation clamp	SRLZQF	25-26

## Schlage Medio Series Levers

Product Name	Finish	Code	Page
<b>Alba</b>	Brushed Satin Chrome	SRL51ALBS	27
Passage set		SRL52ALBS	
Privacy set		SRL53ALBS	
Single dummy trim			
<b>Centra</b>	Brushed Satin Chrome	SRL51CEBS	27
Passage set		SRL51CEBS	
Passage bulk pack - 8 lever sets		SRL51CEBS-BULK	
Privacy set		SRL52CEBS	
Privacy bulk pack - 8 lever sets		SRL52CEBS-BULK	
Single dummy trim		SRL53CEBS	
Dummy bulk pack - 16 levers		SRL53CEBS-BULK	
<b>Rivera</b>			27
Passage set	Aged Brushed Copper	SRL51RVAC	
Privacy set	Aged Brushed Copper	SRL52RVAC	
Single dummy trim	Aged Brushed Copper	SRL53RVAC	
Passage set	Brushed Satin Chrome	SRL51RVBS	
Privacy set	Brushed Satin Chrome	SRL52RVBS	
Single dummy trim	Brushed Satin Chrome	SRL53RVBS	
Passage set	Matt Black	SRL51RVMB	
Privacy set	Matt Black	SRL52RVMB	
Single dummy trim	Matt Black	SRL53RVMB	
<b>Sierra</b>			27
Passage set	Aged Brushed Copper	SRL51SRAC	
Privacy set	Aged Brushed Copper	SRL52SRAC	
Single dummy trim	Aged Brushed Copper	SRL53SRAC	
Passage set	Brushed Satin Chrome	SRL51SRBS	
Privacy set	Brushed Satin Chrome	SRL52SRBS	
Single dummy trim	Brushed Satin Chrome	SRL53SRBS	
Passage set	Matt Black	SRL51SRMB	
Privacy set	Matt Black	SRL52SRMB	
Single dummy trim	Matt Black	SRL53SRMB	
<b>Stella</b>	Brushed Satin Chrome	SRL51STBS	27
Passage set		SRL52STBS	
Privacy set		SRL53STBS	
Single dummy trim			

## Schlage Medio Series Accessories

Product Name	Finish	Code	Page
Rose cap single	Aged Brushed Copper	SRL51AYAC	27
Rose cap single	Brushed Satin Chrome	SRL51AYBS	
Rose cap single (Centra)	Brushed Satin Chrome	SRL51AYCEBS	
Rose cap single	Matt Black	SRL51AYMB	
Rose cap privacy pair	Aged Brushed Copper	SRL52AYAC	27
Rose cap privacy pair	Brushed Satin Chrome	SRL52AYBS	
Rose cap privacy pair LH (Centra)	Brushed Satin Chrome	SRL52AYCEBSL	
Rose cap privacy pair RH (Centra)	Brushed Satin Chrome	SRL52AYCEBSR	
Rose cap privacy pair	Matt Black	SRL52AYMB	
Rose cap o-ring	Matt Black	SRL75OR	27
Privacy latch bolt - 60mm backset - contains latch, spindle, screws & emergency release	Aged Brushed Copper Matt Black Brushed Satin Chrome Satin Stainless Steel	SRL52AZAC SRL52AZMB SRL52AZSC SRL72AZSS	27
Passage latch - 60mm backset - contains latch, strike, dust box and screws	Aged Brushed Copper Matt Black Brushed Satin Chrome Satin Stainless Steel	SRL51AZAC SRL51AZMB SRL51AZSC SRL71AZSS	27
Universal rebate kit	Satin Stainless Steel	SRL14340	27
T-Strike and dust box	Aged Brushed Copper Matt Black Brushed Satin Chrome	SRL55AXAC SRL55AXMB SRL55AXSC	27
Standard privacy pin	Matt Black Brushed Satin Chrome	ZQF219 ZQF218	27
Extended privacy pin	Aged Brushed Copper Matt Black Brushed Satin Chrome	ZQF217 ZQF216 ZQF215	27
QuickFix™ door preparation clamp	Satin Stainless Steel	SRLZQF	27

## Schlage Grande Series Levers

Product Name	Finish	Code	Page
<b>Alba</b>	Satin Chrome Plate		28
Furniture set		SRL14343	
Passage set		SRL14341	
Privacy set		SRL14342	
Single dummy trim		SRL14344	
<b>Centra</b>	Satin Chrome Plate		28
Furniture set		SRL14388	
Passage set		SRL14386	
Privacy set		SRL14387	
Single dummy trim		SRL14392	
<b>Stella</b>	Satin Chrome Plate		28
Furniture set		SRL14347	
Passage set		SRL14345	
Privacy set		SRL14346	
Single dummy trim		SRL14348	

Grande Series Accessories on next page

# Index

## Schlage Grande Series Accessories

Product Name	Finish	Code	Page
Privacy latch bolt - 60mm backset	Satin Chrome Plate	ZCA030	28
Passage latch - 60mm backset	Satin Chrome Plate	Z6005S	28
Furniture spindle - 70mm spindle 2 3/4" - 80mm spindle 3 1/4" - 1m length	Satin Stainless Steel	LS70/B LS80/B LS1000	28
Universal rebate kit	Satin Stainless Steel	SRL14340	28
Short D strike plate	Satin Stainless Steel	LSTRIKE	28
Passage latch - 70mm backset	Satin Stainless Steel	SRP32992	28

## Schlage F Series Levers

Product Name	Finish	Code	Page
<b>Accent</b>	Satin Nickel Plate		31
F51 Entrance lock		SRL14066	
F10 Passage set		SRL14047	
F40 Privacy set		SRL14056	
F170 Single dummy trim LH		SRL13654	
F170 Single dummy trim RH		SRL13655	
<b>Elan</b>	Satin Chrome Plate		31
F51 Entrance lock		SRL14091	
F10 Passage set		SRL14082	
F40 Privacy set		SRL14083	
F170 Single dummy trim		SRL14084	
<b>Flair</b>	Satin Chrome Plate		31
F51 Entrance lock		SRL14031	
F10 Passage set		SRL14011	
F40 Privacy set		SRL14021	
F170 Single dummy trim LH		SRL13711	
F170 Single dummy trim RH		SRL13712	
<b>Latitude</b>			31
F51 Entrance lock	Black	SRL32052	
F10 Passage set	Black	SRL32053	
F40 Privacy set	Black	SRL32051	
F170 Single dummy trim	Black	SRL32054	
F51 Entrance lock	Satin Chrome Plate	SRL19161	
F10 Passage set	Satin Chrome Plate	SRL19159	
F40 Privacy set	Satin Chrome Plate	SRL19160	
F170 Single dummy trim	Satin Chrome Plate	SRL19162	
<b>Century Latitude</b>			31
F51 Entrance lock	Black	SRL32072	
F10 Passage set	Black	SRL32074	
F40 Privacy set	Black	SRL32073	
F170 Single dummy trim	Black	SRL32075	
F10 Passage set	Satin Nickel Plate	SRL32294	
<b>Manhattan</b>	Satin Chrome Plate		31
F51 Entrance lock		SRL14120	
F10 Passage set		SRL14122	
F40 Privacy set		SRL14121	
F170 Single dummy trim LH		SRL14161	
F170 Single dummy trim RH		SRL14123	

## Schlage F Series Accessories

Product Name	Finish	Code	Page
60/70mm Adjustable latch	Polished Brass Satin Chrome Plate	SRP15991 SRP15768	31
60/70mm Adjustable deadlatch	Polished Brass Satin Chrome Plate	SRP15721 SRP15722	31
60/70mm Adjustable deadbolt latch	Satin Chrome Plate	SLP26095	31
127mm Deadlatch	Polished Brass Satin Chrome Plate	SRP15732 SRP15734	31
Rebate kit for F Series	Polished Brass Satin Chrome Plate	L23640 L23641	31
Cylinder for F Series lever	Satin Chrome Plate	SRP32210	31
Cylinder for F Series knob	Satin Chrome Plate	SRP32209	31
Extension kit for lever for doors from 51mm to 57mm	Satin Nickel Plate	SRL32340	31

## Schlage Valor Series Levers

Product Name	Finish	Code	Page
<b>Angular Square</b>			32
Passage set	Matt Black	SRG2S1ANMB	
Privacy set	Matt Black	SRG2S2ANMB	
Single dummy trim	Matt Black	SRG2S3ANMB	
Passage set	Satin Pearl	SRG2S1ANSP	
Privacy set	Satin Pearl	SRG2S2ANSP	
Single dummy trim	Satin Pearl	SRG2S3ANSP	
<b>Angular Round</b>			32
Passage set	Matt Black	SRG2R1ANMB	
Privacy set	Matt Black	SRG2R2ANMB	
Single dummy trim	Matt Black	SRG2R3ANMB	
Passage set	Satin Pearl	SRG2R1ANSP	
Privacy set	Satin Pearl	SRG2R2ANSP	
Single dummy trim	Satin Pearl	SRG2R3ANSP	
<b>Aurora</b>	Satin Chrome Plate		32
Passage set		SRG2R1AUSC	
Privacy set		SRG2R2AUSC	
Single dummy trim		SRG2R3AUSC	

## Schlage Moda Series Levers

Product Name	Finish	Code	Page
<b>Alyssia</b>			33
Passage set	Matt Black	SRG31ALMB	
Privacy set	Matt Black	SRG32ALMB	
Single dummy trim	Matt Black	SRG33ALMB	
Passage set	Satin Chrome Plate	SRG31ALSC	
Privacy set	Satin Chrome Plate	SRG32ALSC	
Single dummy trim	Satin Chrome Plate	SRG33ALSC	
<b>Elena</b>			33
Passage set	Matt Black	SRG31ELMB	
Privacy set	Matt Black	SRG32ELMB	
Single dummy trim	Matt Black	SRG33ELMB	
Passage set	Satin Chrome Plate	SRG31ELSC	
Privacy set	Satin Chrome Plate	SRG32ELSC	
Single dummy trim	Satin Chrome Plate	SRG33ELSC	
<b>Sofia</b>	Satin Chrome Plate		33
Passage set		SRG31SOSC	
Privacy set		SRG32SOSC	
Single dummy trim		SRG33SOSC	

## Schlage Element Series Levers

Product Name	Finish	Code	Page
<b>Amelia</b>			34
Passage set	Matt Black	SRG41AEMB	
Privacy set	Matt Black	SRG42AEMB	
Single dummy trim	Matt Black	SRG43AEMB	
Passage set	Satin Chrome Plate	SRG41AESC	
Privacy set	Satin Chrome Plate	SRG42AESC	
Single dummy trim	Satin Chrome Plate	SRG43AESC	
<b>Bailey</b>	Satin Chrome Plate		34
Passage set		SRG41BASC	
Privacy set		SRG42BASC	
Single dummy trim		SRG43BASC	
<b>Carla</b>			34
Passage set	Matt Black	SRG41CAMB	
Privacy set	Matt Black	SRG42CAMB	
Single dummy trim	Matt Black	SRG43CAMB	
Passage set	Satin Chrome Plate	SRG41CASC	
Privacy set	Satin Chrome Plate	SRG42CASC	
Single dummy trim	Satin Chrome Plate	SRG43CASC	
<b>Florence</b>	Satin Chrome Plate		34
Passage set		SRG41FLSC	
Privacy set		SRG42FLSC	
Single dummy trim LH		SRG43FLSCL	
Single dummy trim RH		SRG43FLSCR	
<b>Lianna</b>			34
Passage set	Matt Black	SRG41LIMB	
Privacy set	Matt Black	SRG42LIMB	
Single dummy trim	Matt Black	SRG43LIMB	
Passage set	Satin Chrome Plate	SRG41LISC	
Privacy set	Satin Chrome Plate	SRG42LISC	
Single dummy trim	Satin Chrome Plate	SRG43LISC	

## Schlage Regent Series Levers

Product Name	Finish	Code	Page
<b>Boston</b>	Satin Chrome Plate		35
R51 Entrance lock		RBENTSS	
R10 Passage set		RBPASSS	
R40 Privacy set		RBPRIVS	
R170 Single dummy trim		RBDUMMS	
<b>Jupiter</b>			35
R51 Entrance lock	Satin Chrome Plate	RJENTSS	
R10 Passage set	Satin Chrome Plate	RJPASSS	
R40 Privacy set	Satin Chrome Plate	RJPRIVS	
R170 Single dummy trim	Satin Chrome Plate	RJDUMMS	
R51 Entrance lock	Satin Nickel Plate	RJENTSSNP	
R10 Passage set	Satin Nickel Plate	RJPASSSNP	
R40 Privacy set	Satin Nickel Plate	RJPRIVSNP	
R170 Single dummy trim	Satin Nickel Plate	RJDUMMSNP	
<b>Leonardo</b>			35
R51 Entrance lock	Satin Chrome Plate	RELENTSS	
R10 Passage set	Satin Chrome Plate	RLPASSS	
R40 Privacy set	Satin Chrome Plate	RLPRIVS	
R170 Single dummy trim	Satin Chrome Plate	RLDUMMS	
R51 Entrance lock	Satin Nickel Plate	RELENTSSNP	
R10 Passage set	Satin Nickel Plate	RLPASSSNP	
R40 Privacy set	Satin Nickel Plate	RLPRIVSNP	
R170 Single dummy trim	Satin Nickel Plate	RLDUMMSNP	
<b>Orlando</b>	Satin Chrome Plate		35
R51 Entrance lock		ROENTS	
R10 Passage set		ROPASSS	
R40 Privacy set		ROPRIVS	
R170 Single dummy trim		RODUMMS	
<b>Rubens</b>			35
R51 Entrance lock	Satin Chrome Plate	RRENTSS	
R10 Passage set	Satin Chrome Plate	RRPASSS	
R40 Privacy set	Satin Chrome Plate	RRPRIVS	
R170 Single dummy trim	Satin Chrome Plate	RRDUMMS	
R51 Entrance lock	Satin Nickel Plate	RRENTSSNP	
R10 Passage set	Satin Nickel Plate	RRPASSSNP	
R40 Privacy set	Satin Nickel Plate	RRPRIVSNP	
R170 Single dummy trim	Satin Nickel Plate	RRDUMMSNP	

## Regent Series Accessories

Product Name	Finish	Code	Page
Deadlatch 60/70mm	Polished Brass Satin Chrome Plate Satin Nickel Plate	RD60/70P RD60/70S RD60/70SNP	35
Latch 60/70mm	Satin Chrome Plate Satin Nickel Plate	RS60/70S RS60/70SNP	35
Deadlatch 127mm	Chrome Plate Polished Brass Satin Nickel Plate Satin Stainless Steel	RL127C RL127P RL127SNP RL127S	35
Rebate kit	Polished Brass Satin Chrome Plate	L23640 L23641	35
Universal rebate kit	Satin Stainless Steel	SRL14340	35
Dust box (plastic) - D Strike	Black	RSBOX	35

# Index

## Schlage F Series Knobs

Product Name	Finish	Code	Page
<b>Bowrie</b>	Black	Indent Items:	36
F51 Entrance lock		<a href="#">SRL32068</a>	
F10 Passage set		<a href="#">SRL32070</a>	
F40 Privacy set		<a href="#">SRL32069</a>	
F170 Single dummy trim		<a href="#">SRL32071</a>	
<b>Georgian</b>	Antique Brass		36
F51 Entrance lock		SRL13059	
F10 Passage set		SRL10125	
F40 Privacy set		SRL10127	
F170 Single dummy trim		SRL10124	
<b>Orbit</b>	Satin Chrome Plate		36
F51 Entrance lock		SRL13549	
F10 Passage set		SRL13547	
F40 Privacy set		SRL13548	
F170 Single dummy trim		SRL13550	
<b>Plymouth</b>			36
F51 Entrance lock	Polished Brass	SRL13058	
F10 Passage set	Polished Brass	SRL10143	
F40 Privacy set	Polished Brass	SRL10145	
F170 Single dummy trim	Polished Brass	SRL10142	
F51 Entrance lock	Satin Chrome Plate	SRL13232	
F10 Passage set	Satin Chrome Plate	SRL13230	
F40 Privacy set	Satin Chrome Plate	SRL13231	
F170 Single dummy trim	Satin Chrome Plate	SRL13233	

## Schlage Classic Series Knobs

Product Name	Finish	Code	Page
<b>Classic</b>	Bright Gold		36
Classic 55mm white passage knob		SRGK1CLBG	
Classic passage to privacy adaptor kit		SRGK2CLBG	
Classic 45mm white wardrobe knob		SRGK0CLBG	
<b>Classic</b>	Chrome Plate		36
Classic 55mm white passage knob		SRGK1CLCP	
Classic passage to privacy adaptor kit		SRGK2CLCP	
Classic 45mm white wardrobe knob		SRGK0CLCP	
<b>Classic</b>	Satin Pearl		36
Classic 55mm white passage knob		SRGK1CLSP	
Classic passage to privacy adaptor kit		SRGK2CLSP	
Classic 45mm white wardrobe knob		SRGK0CLSP	
<b>Classic Diplomat</b>	Bright Gold		36
Classic Diplomat 55mm passage knobset		SRGK1DPBG	
Classic Diplomat 55mm dummy knob		SRGK3DPBG	
Classic Diplomat 45mm wardrobe knob		SRGK0DPBG	
<b>Classic Diplomat</b>	Satin Pearl		36
Classic Diplomat 55mm passage knobset		SRGK1DPSP	
Classic Diplomat 55mm dummy knob		SRGK3DPSP	
Classic Diplomat 45mm wardrobe knob		SRGK0DPSP	

## Schlage Regent Series Knobs

Product Name	Finish	Code	Page
<b>Denver</b>	Chrome Plate		36
R152 Combination set (deadbolt and entrance set, keyed alike)		RDCOMBC	
R51 Entrance lock		RMENTSC	
R10 Passage set		RDPASSC	
R40 Privacy set		RDPRIVC	
R170 Single dummy trim		RDDUMMC	
<b>Denver</b>	Polished Brass		36
R51 Entrance lock		RMENTSP	
R10 Passage set		RDPASSP	
R40 Privacy set		RDPRIVP	
R170 Single dummy trim		RDDUMMP	
<b>Denver</b>	Satin Stainless Steel		36
R152 Combination set (deadbolt and entrance set, keyed alike)		RDCOMBS	
R51 Entrance lock		RMENTSS	
R10 Passage set		RDPASSS	
R40 Privacy set		RDPRIVS	
R170 Single dummy trim		RDDUMMS	

## Schlage Element Series Knob

Product Name	Finish	Code	Page
<b>Terrace</b>	Satin Stainless Steel		36
Entrance set		SRGK4TESS	
Passage set		SRGK1TESS	
Privacy set		SRGK2TESS	
Single dummy trim		SRGK3TESS	

## Schlage be BOLD with black

Product Name	Finish	Code	Page
Encode Oblong entrance kit	Matt Black	SRSGE-450TMB	37
	Satin Nickel Plate/	SRSGE-600TMB	
	Satin Stainless Steel	SRSGE-450TSS	
		SRSGE-600TSS	
Ease S1 Oblong entrance kit	Matt Black	SRSS1-450MB	37
		SRSS1-600MB	
Encode Century Latitude Entrance kit	Matt Black	SRS60MB	38
	Satin Nickel Plate	SRS60SNP	
Encode Latitude lever set	Matt Black	SRE60130	38
	Satin Nickel Plate	SRE60131	
Schlage & Legge accessories			63-64

## Schlage be BOLD with black

Product Name	Reference to index page	Page
<b>Schlage Medio Series</b> Rivera Sierra	See page 58	39
<b>Schlage Valor Series</b> Angular Square Angular Round	See page 59	39
<b>Schlage Moda Series</b> Alyssia Elena	See page 60	39
<b>Schlage Element Series</b> Amelia Carla Lianna	See page 60	40
<b>Schlage F Series</b> Latitude Century Latitude Bowrie	See page 59 & 61	40

## Schlage Stella Sliding Door Lock

Product Name	Black	Page
<b>Non key locking</b> Inside: locking by snib only Outside: blank pull	SSD12200	43
<b>External Locking</b> Inside: locking by snib only Outside: key locking	SSD12205	43
<b>Deadlocking with daylatch</b> Inside: locking by key and snib Outside: key locking	SSD12215	43
<b>Dummy</b> Inside: blank pull Outside: blank pull	SSD12221	43

## Schlage Stella Slimline Sliding Door Lock

Product Name	Black	Page
<b>Non key locking</b> Inside: locking by snib only Outside: blank pull	SSD12233	43
<b>External Locking</b> Inside: locking by snib only Outside: key locking	SSD12239*	43
<b>Dummy</b> Inside: blank pull Outside: blank pull	SSD12251	43

\*Add C4 to end of code to receive a C4 cylinder option at no extra cost

## Schlage Stella Sliding Door Lock Accessories

Product Name	Black	Page
Stella body packer 3mm	SSD12258	43
Stella strike packer 6mm	SSD12257	43
6 Pin C4 cylinder external only	SSD12230	43
6 Pin C4 cylinders external and internal KA (KA1 to KA20)	SSD12232	43
6 Pin C5 cylinder external only	SSD12260	43

## Brio Open Bar Rail 80

Product Name	Finish	Code	Page
Open Bar Rail 80 kit - 2m	Aged Brushed Copper	OBF80-20ABZ	44
Open Bar Rail 80 kit - 2.5m	Aged Brushed Copper	OBF80-25ABZ	44
Open Bar Rail 80 kit - 2m	Powder Coated Black	OBF80-20PB	44
Open Bar Rail 80 kit - 2.5m	Powder Coated Black	OBF80-25PB	44
Open Bar Rail 80 kit - 2m	Stainless Steel	OBF80-20	44
Open Bar Rail 80 kit - 2.5m	Stainless Steel	OBF80-25	44

## Brio Open Bar Rail 80 - Rail Joiners & Soft Close Kit

Product Name	Finish	Code	Page
Rail joining bracket	Antique Bronze	80B-JBABZ	44
Rail joining bracket	Powder Coated Black	80B-JBPB	44
Rail joining bracket	Stainless Steel	80B-JB	44
Soft Close Kit - includes two soft close units for soft-close in both opening and closing directions		OBF80-SCT	44

# Index

## Brio Wardrobe Roll 50

Product Name	Code	Page
Kit for 2 panels - 1.2m opening	WR50-12/2*	44
Kit for 2 panels - 1.5m opening	WR50-15/2*	44
Kit for 2 panels - 1.8m opening	WR50-18/2*	44
Kit for 3 panels - 2.4m opening	WR50-24/3*	44
Wardrobe Roll 50 Sill – 5m extrusion	53-50*	44
Wardrobe Roll 50 Head – 5m extrusion	55-50*	44
Wardrobe Roll / Trio 50 Sill Infill – 5m extrusion	56-50*	44

Brio Wardrobe Roll 50 is a double track system  
 \*Add finish "pwt" for white, "ca" for clear anodised  
 \*Add "-TR" for trade packaging

## Brio Wardrobe Roll Trio 50

Product Name	Code	Page
Kit for 3 panels – 1.8m opening	WT50-18/3*	44
Kit for 3 panels – 2.1m opening	WT50-21/3*	44
Kit for 3 panels – 2.4m opening	WT50-24/3*	44
Kit for 3 panels – 2.7m opening	WT50-27/3*	44
Wardrobe Roll Trio 50 Sill – 5m extrusion	57-50*	44
Wardrobe Roll Trio 50 Head – 5m extrusion	58-50*	44
Wardrobe Roll 50 / Trio 50 Sill Infill – 5m extrusion	56-50*	44

Wardrobe Roll Trio 50 is a triple track system  
 \*Add finish "pwt" for white, "ca" for clear anodised  
 \*Add "-TR" for trade packaging

## Brio Wardrobe Roll 50 - Components & Accessories

Product Name	Code	Page
Wardrobe Roll 50 1 panel fittings	WR50-1PK	44
Soft close kit for 1 panel in one direction (panel weight: >20kg)	50SCL	44
Soft close kit for 1 panel in one direction (panel weight: 21-50kg)	50SCT	44

## Schlage Wall Mounted Door Stops

Product Name	Finish	Code	Page
Round post, 75mm projection	Satin Stainless Steel	DAX13002SSS	47
Round post, 77mm projection (single)	Black Satin Chrome Plate Satin Nickel Plate Satin Pearl Satin Stainless Steel	SDC19003V SDC19001V SDC18499 SDC19000V SDC19002V	47
Round post, 77mm projection (6 pack)	Satin Chrome Plate	SDC19004V	47
Round post, 80mm projection	Satin Stainless Steel	DAX13001SSS	47
Round post, 85mm projection	Aged Brushed Copper Black Satin Nickel Plate Satin Pearl	SDC19041V SDC19006V SDC18540V SDC19008V	47
Round post, 85mm projection (6 pack)	Satin Nickel Plate	SDC19005V	47
Round post, 110mm projection	Satin Nickel Plate Satin Pearl	SDC19007V SDC18546V	47
Square post, 76mm projection	Satin Stainless Steel	SDC19015V	47
Square post, 85mm projection (Single)	Black Satin Nickel Plate Satin Pearl Satin Stainless Steel	SDC19012V SDC19010V SDC19014V SDC18529	47
Square post, 85mm projection (6 pack)	Satin Nickel Plate	SDC19011V	47
Round post, magnetic, 75mm projection	Satin Nickel Plate	SDC19039V	47
Round post, magnetic, 85mm projection	Black Satin Nickel Plate	SDC19019V SDC19018V	47
Round post, hold open, 75mm projection	Satin Pearl	SDC19020V	47
Round post, latch back, 75mm projection	Black Satin Chrome Plate	SDC19036V SDC19035V	47
Square post, latch back, 75mm projection	Black Satin Chrome Plate	SDC19034V SDC19033V	47

## Schlage Floor Mounted Door Stops

Product Name	Finish	Code	Page
Round, 38mm height, 50mm diameter	Satin Pearl	SDC19022V	48
Round, 40mm height, 45mm diameter	Aged Brushed Copper Black Satin Stainless Steel	SDC19042V SDC19024V SDC19023V	48
Round, 60mm height, 45mm diameter	Satin Stainless Steel	SDC19025V	48
Round, 40mm height, 35mm diameter	Satin Nickel Plate	SDC19026V	48
Dome, 45mm diameter	Black Satin Chrome Plate Satin Pearl	SDC19028V SDC19027V SDC19029V	48
Square, 40mm height, 40mm width	Satin Stainless Steel	DAX12805SSSV	48
Square, 40mm height, 40mm width	Satin Nickel Plate	SDC19030V	48
Round, magnetic, 40mm height	Satin Nickel Plate	SDC19031V	48
Round, magnetic, hold open, 75mm height, 50mm diameter	Satin Chrome Plate Satin Nickel Plate	SDC18516V SDC18515	48

## Schlage Cavity Sliding Hardware

Product Name	Finish	Code	Page
Square passage cavity slider	Matt Black Satin Pearl	SRGCSS1MB SRGCSS1SP	49
Square privacy cavity slider (turn/emergency release)	Matt Black Satin Pearl	SRGCSS2MB SRGCSS2SP	49
Round passage cavity slider	Aged Brushed Copper Matt Black Satin Chrome Plate Satin Pearl	SRGCSR1AC SRGCSR1MB SRGCSR1SC SRGCSR1SP	49
Round privacy cavity slider (turn/emergency release)	Aged Brushed Copper Matt Black Satin Chrome Plate Satin Pearl	SRGCSR2AC SRGCSR2MB SRGCSR2SC SRGCSR2SP	49
Passage sliding door lock (door thickness: 35mm)	Satin Chrome Plate	SRL13576	49
Privacy sliding door lock (door thickness: 35mm)	Satin Chrome Plate	SRL13580	49
Face fixing rectangular flush pull - rounded	Satin Pearl	SRGFPRSP-125	49
Face fixing rectangular flush pull - square	Satin Pearl	SRGFPPSP-115	49
Concealed fixing rectangular flush pull - rounded 120mm	Satin Stainless Steel	SRGFPRSS-120	49
Concealed fixing rectangular flush pull - rounded 150mm	Satin Stainless Steel	SRGFPRSS-150	49
Concealed fixing rectangular flush pull - square 120mm	Satin Stainless Steel	SRGFPSSS-120	49
Concealed fixing rectangular flush pull - square 150mm	Satin Stainless Steel	SRGFPSSS-150	49

## Legge Cavity Sliding Hardware

Product Name	Finish	Code	Page
1962 Flush pull	Satin Stainless Steel	DAX1962SSS	49
1964 Flush pull	Satin Stainless Steel	DAX1964SSS-01	49
180 Flush Pull	Aged Brushed Copper Black Satin Stainless Steel	LGHFPS180ABCV LGHFPS180BV LGHFPS180SSV	49
Finger pull - round	Satin Stainless Steel	SDC18525	49
Finger pull - square	Black Satin Stainless Steel	SDC18526 SDC18524	49

## Schlage & Legge General Hardware

Product Name	Finish	Code	Page
Heavy duty roller catch	Matt Black Satin Stainless Steel	DAX15211BPC DAX15211SSS	50
Roller catch	Chrome Plate Polished Brass Satin Chrome Plate	6230CP SDC15763 SDC18488	50
Magnetic door catch 1 Pair 5 Pairs	Chrome Plate	SDC18504 SDC18505	50
Reverse barrel bolt (125mm)	Satin Chrome Plate	SDC18542	50
Door viewer	Antique Bronze Black Chrome Plate Satin Chrome Plate	SGHDV16A SGHDV16B SDC18486 SDC18501	50
Hat and coat hook	Satin Stainless Steel	DAX12921SSS	50
Square turn and tubular latch	Black	DAX9030MB	50