

---

# Familiar Territory

Porcelain Stone®

---





# Familiar Territory

## Porcelain Stone<sup>®</sup>

### Discover your new favorite tile collection—as creative as it is comfortable for your designs

Like your favorite blue jeans, mom's apple pie, or that vacation spot you return to over and over, Crossville's Familiar Territory lays a comfortable groundwork for interior inspiration. Taking cues from the natural landscape, the collection's thin, multi-directional striations are inspired by quartzite and shifting sands to subtly enhance the face of this digitally decorated tile. The simplicity of the line—featuring a 12x24 calibrated field tile, 2 trim options, and a 2x2 mosaic—showcases 5 subtle, neutral hues. Get familiar with Familiar Territory, and return time and again for its enduring style.

- Multi-directional striations for a subtle stone look
- Available in Cross-Sheen<sup>®</sup> (UPS) and semi-polished (SPO) finishes
- Coordinating trim and 2x2 mosaic
- Suitable for commercial or residential applications



FAM04 ▶ Mahogany 12 x 24 UPS

# Color Palette

## Available Colors



**FAM01** ▶ Crème UPS



**FAM01** ▶ Crème SPO



**FAM01.10202MOS**  
Crème 2x2 Mosaic UPS



**FAM02** ▶ Taupe UPS



**FAM02** ▶ Taupe SPO



**FAM02.10202MOS**  
Taupe 2x2 Mosaic UPS



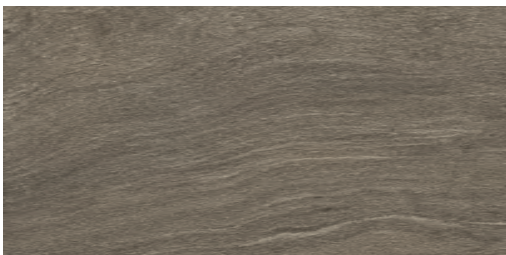
**FAM03** ▶ Sand UPS



**FAM03** ▶ Sand SPO



**FAM03.10202MOS**  
Sand 2x2 Mosaic UPS



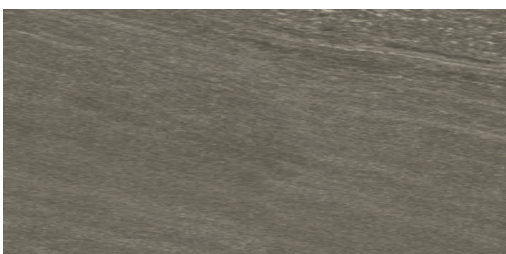
**FAM04** ▶ Mahogany UPS



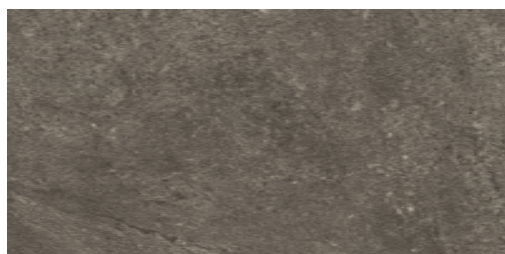
**FAM04** ▶ Mahogany SPO



**FAM04.10202MOS**  
Mahogany 2x2 Mosaic UPS



**FAM05** ▶ Iron UPS



**FAM05** ▶ Iron SPO



**FAM05.10202MOS**  
Iron 2x2 Mosaic UPS





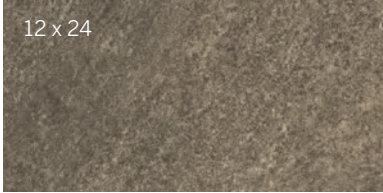
FAM01 ▶ Crème 2 x 2 Mosaics UPS



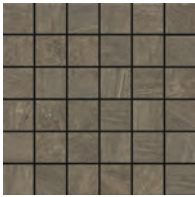
FAM03 ▶ Sand 12 x 24 SPO

# Specifications

## Sizes (Shown in FAM04)



12 x 24



2 x 2 Square Mosaic  
UPS Finish  
(Mounted on a 12 x 12 sheet.)

## Sizes & Finishes

### Field Tile

Available in all colors

Nominal (in)	Actual (in)	Thickness (in)	Finish
12 x 24	11-13/16 x 23-13/16	3/8	UPS/SPO

Crossville recommends a grout joint of 3/16.  
Actual measurements stated in inches indicate tile is calibrated (non-rectified).  
Actual measurements stated in mm indicate tile is rectified.

### Mosaics

Available in all colors

Nominal (in)	Sheet Size (in)	Thickness (in)	Finish
2 x 2 Mosaic*	11-15/16 x 11-15/16	3/8	UPS

\*Mounted on 12 x 12 sheet with 3mm grout joints

### Coordinating Trim

Nominal (in)	Actual (in)	Thickness (mm)	Finish
6 x 12 Cove Base	5-7/8 x 11-3/4	3/8	UPS
4 x 24 Single Bullnose	3-13/16 x 23-13/16	3/8	UPS/SPO



6 x 12 Cove Base



4 x 24 Bullnose

## Product Performance

Breaking Strength	>450 lbf	ASTM C648
Bond Strength	>200 psi	ASTM C482
Chemical Resistance	Unaffected	ASTM C650
Frost Resistance	Resistant	ASTM C1026
Water Absorption	<0.20%	ASTM C373
Scratch Hardness	7	Mohs Scale

## Get Planked!

Our Porcelain Stone® products are available in popular plank shapes with no minimum order and quick fulfillment.

See website for more details and sizes.



## Wet Dynamic Coefficient of Friction Range

UPS	0.50 - 0.60	AcuTest <sup>sm</sup>
SPO	0.42 - 0.52	AcuTest <sup>sm</sup>

## Shade & Texture Index

Familiar Territory has a shade variation of V3.

V1	V2	V3	V4	V1 Uniform appearance
				V2 Slight Variation
				<b>V3 Moderate Variation</b>
				V4 Substantial Variation

This porcelain tile product is produced with a V3 variation. Expect that the amount of color and texture on each piece may vary significantly. Inspect the product upon delivery and for best results, blend tile from several cartons during installation



# Familiar Territory

**Crossville, Inc.**

PO Box 1168  
Crossville, TN  
38557

**Phone** 931.484.2110  
**Fax** 931.456.2956  
**E-Mail** Crossc@CrossvilleInc.com  
**Web** CrossvilleInc.com

## Recommended Use

Familiar Territory is recommended for interior floors, walls, countertops, and exterior walls in both residential and commercial applications. Familiar Territory is not recommended for exterior horizontal surfaces or exterior paving. **If offset pattern is required for tiles 15 inches or longer, Crossville® recommends an offset of not greater than 33%.** See CrossvilleInc.com for detailed installation instructions.

## Wet Area Use for Familiar Territory Mosaics

Crossville® produces the Familiar Territory 2 x 2 mosaics with the Cross-Sheen® (UPS) finish. The AcuTest<sup>SM</sup> wet Dynamic COF of Familiar Territory is  $\geq 0.42$ . Their small sizes ensure frequent grout joints which provides traction and drainage. Crossville cannot control situations involving incorrect installation, improper slope to the drain for elimination of standing water and poor surface cleaning.

This information is provided so that customers may make a realistic and informed decision when comparing Familiar Territory to other tile products in wet area environments, such as residential/commercial bathrooms, showers, and interior pool decks.

*Information listed here is subject to change. Please refer to CrossvilleInc.com for the latest, most accurate information.*

## Care and Maintenance

Regular cleaning is the best way to keep Familiar Territory tile looking good for years to come. Use clean, hot water (combined with a household cleaner for more aggressive cleaning). Rinse thoroughly and dry with a soft cloth. No waxes are needed. More information regarding the care and maintenance of Crossville® products is available at CrossvilleInc.com.

## Hydrotect

Our porcelain tiles are available with Hydrotect. Crossville's revolutionary invisible coating harnesses the power of light, water, and oxygen to create the best defense against dirt and pollution. Whether indoors or out, floors and walls stay cleaner, providing a superior experience in any space. Please request a sample before ordering. For complete details check our website at CrossvilleInc.com.



Photo right:  
Floor: **FAM02** ▶ Taupe 12 x 24 UPS  
Wall: **FAM02** ▶ Taupe 2 x 2 Mosaics

On the cover:  
**FAM05** ▶ Iron 12 x 24 UPS

## Trade Organizations



## Environmentally Aware

