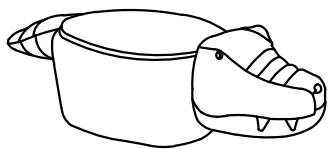


ASSEMBLY INSTRUCTION

846OT7(N1) ALLIGATOR STORAGE OTTOMAN

A Alligator Body	B Leg	C Plastic Washer Ø46XØ10X1.5mm	D Sponge Cushion Ø25X3mm
-------------------------	--------------	--	------------------------------------



1pc



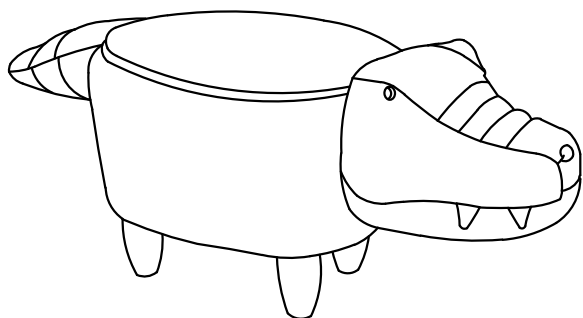
4pcs



4pcs

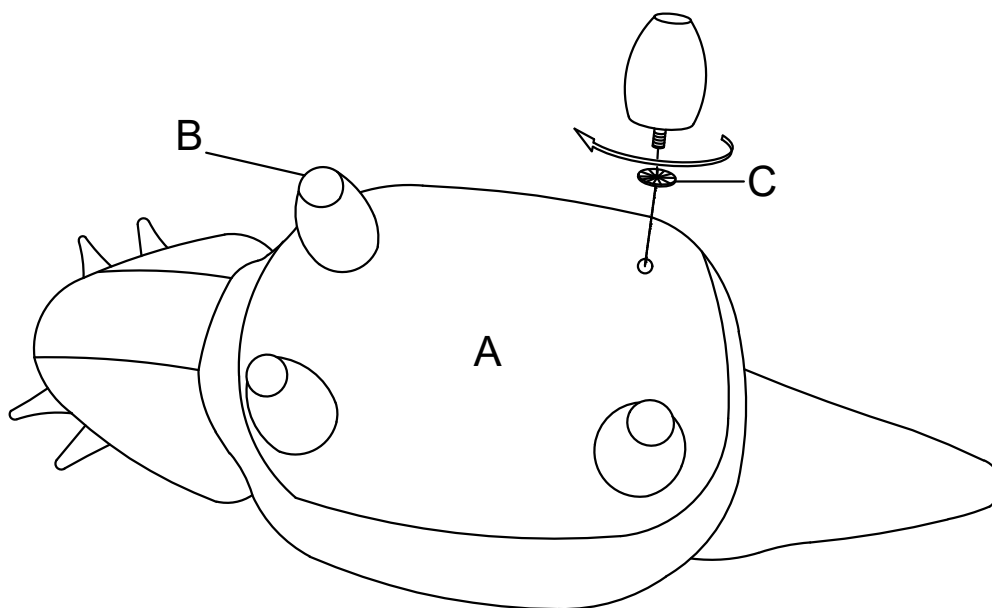


4pcs

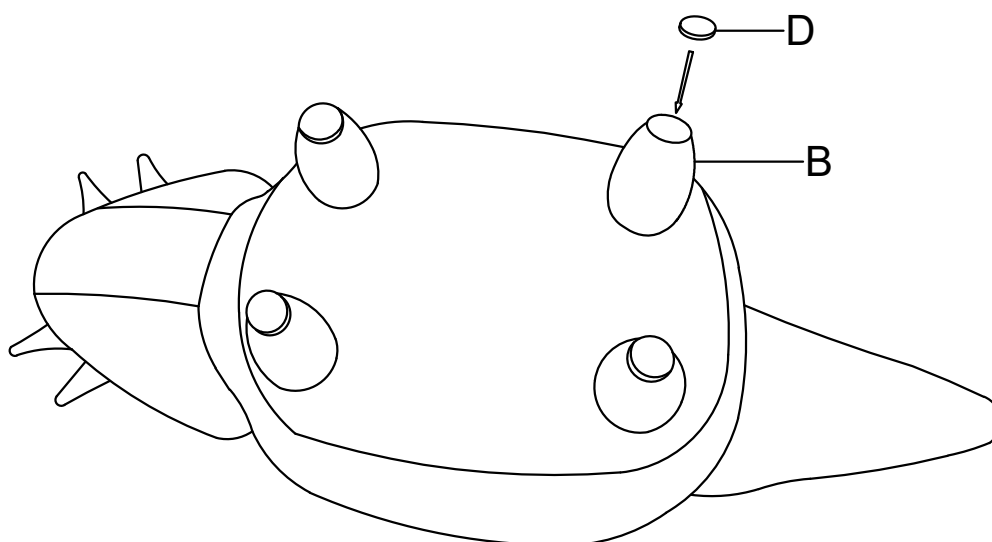


This page lists all the contents included in the box. Please take the time to identify the hardware as well as the individual components to this product. As you unpack and prepare for assembly, place the contents on a carpeted or padded area to protect them from damage.

-
- 1** Upside down the Alligator Body (A), attach 4 pcs Leg (B) and Plastic Washer (C).



-
- 2** Attach 4 pcs Sponge Cushion (D) to the Leg (B).



Cleaning & Care

Treat surface with care. Surface is resistant to scratches but is not scratch resistant. Clean surfaces with a dry or damp soft cloth. Do not use abrasive cleaners. Hardware may loosen over time. Periodically check that all connections are tight.