

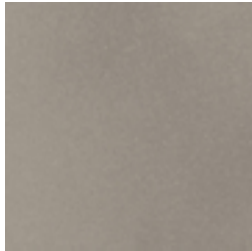
# Midtown



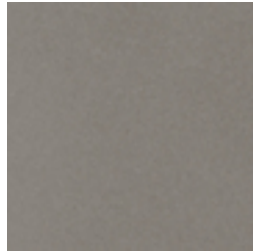
## Colors



Cream  
VTL MICR



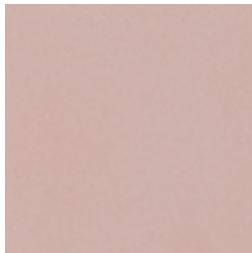
Dove  
VTL MIDO



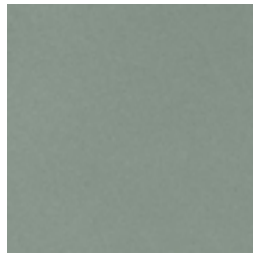
Steel  
VTL MIST



Sky  
VTL MISK



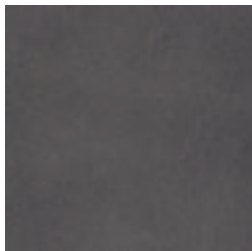
Blush  
VTL MIBL



Sage  
VTL MISA



Clay  
VTL MICL



Anthracite  
VTL MIAN

## Sizes



3" x 12" x 8mm  
Matte

- Cream
- Blush
- Sage
- Sky
- Dove
- Steel
- Clay
- Anthracite

# MIDTOWN

## Field Tiles\*

SIZE	ACTUAL	THICKNESS	FINISH
3" x 12"	3" x 12"	8mm	Matte/Natural

\*Not all sizes/trims are available in all colors and finishes



## Product Characteristics

	MATTE/NATURAL
Breaking Strength	≥ 30Nmm <sup>2</sup>
Chemical Resistance	A-HA
DCOF	N/A
Deep Scratch Resistance - Unglazed	N/A
Frost Resistance	Resistant
Mohs Hardness - EN101	7
Water Absorption	≤ 0.05%
Certifications	N/A
Country of Origin	Portugal
Shade Variation Code	V3

## Application\*\*

		WALL	FLOOR
Interior	Residential	•	•
Interior	Commercial	•	
Interior	Heavy Commercial	•	•
Exterior	Residential/Commercial	•	

\*\* These recommendations are not defined by ANSI Standards

## Material

Unglazed Through-Body Porcelain



V3 Moderate Variation



Import



Made in Portugal



Frost Resistant



Water Absorption: ≤ 0.05%



Request samples.

www.vitlsurfaces.com  
samples@vitlsurfaces.com



VITL  
SURFACES  
COMMERCIAL