



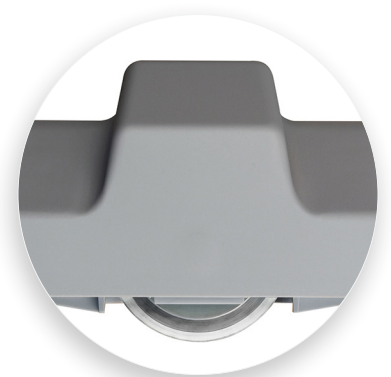
Dahle 558s

Large Format Professional Rotary Trimmer

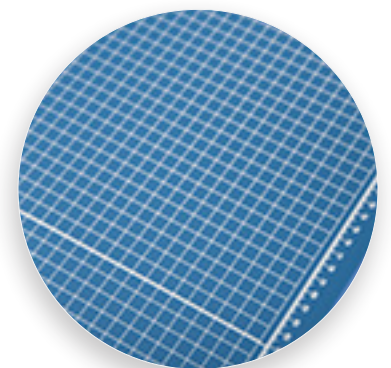
The Dahle 558s Professional Rotary Trimmer with a 51" cut length is designed for precision and accuracy. It features a ground self-sharpening blade, an automatic clamp to prevent shifting, and a metal base for durability. It includes a space-saving stand to ensure optimal cutting height. This German engineered cutter is ultra-precise and ideal for trimming paper, photographs, and cardstock.

Features | Benefits

- Self-sharpening blade cuts in both directions
- Ground steel blade is encased in protective housing for safety
- Automatic clamp holds work securely and prevents shifting
- German engineered for precise trimming
- Includes space-saving steel stand with paper catch for optimal cutting height
- Cuts up to 12 sheets of paper at a time
- Sturdy metal base provides a solid foundation
- Screened inch, metric, and angle guides for easy alignment
- Adjustable alignment guide for repetitive cutting
- Perfect for trimming large format paper, photographs, and cardstock



Self-sharpening system maintains a perfectly honed blade.



Easily align work with screened inch, metric, and angled guide lines.



Cut Length



Sheet Capacity



Self Sharpening



Automatic Paper Clamp



Alignment Guide



Metal Base



German Engineered



With a self-sharpening blade and a sturdy metal base, this precision cutter is ideal for trimming large format paper, photos and cardstock.



Metal guide bar provides strength for trimming thicker materials.



Automatic clamp applies gentle pressure to prevent your work from shifting.



Metal base provides a stable cutting foundation that won't warp or crack.

Dahle 558s Large Format Professional Rotary Trimmer

Cutting Length	Sheet Capacity	Dimensions (length x width x height)	Warranty
51"	12 Sheets	58.875" x 14.125" x 37.25"	Lifetime (excludes blade)



(800) 995-1379
www.Dahle.com