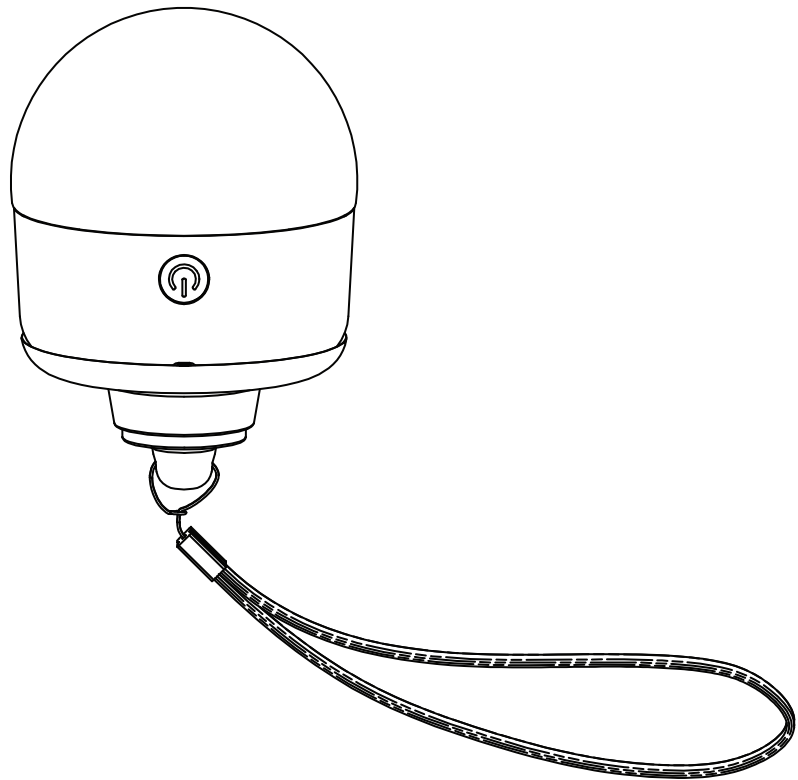


PORTABLE RECHARGEABLE LIGHT WITH 3 WAYS TO MOUNT

IMPORTANT SAFETY INSTRUCTIONS AND INSTALLATION GUIDE



READ BEFORE INSTALLATION
SAVE THESE INSTRUCTIONS



Table of Contents

Safety Information	2
FCC Statement	2
Warranty	2
Pre-Assembly	3
Parts of the Rechargeable bulb	3
Multi-Use Rechargeable Bulb	4
Bulb operation	4
Charging the Rechargeable Bulb	4
Remote Control Functions	4

Important Safety Information

READ ALL INSTRUCTIONS

Read and understand all Safety and Operating instructions in this manual before using this product.

Follow all safe guards stated in the manual, in addition to normal safety precautions in working with electrical devices. Always follow basic safety precautions to reduce the risk of fire, electric shock and personal injury.

- To reduce the risk of fire, keep away from combustible materials while in operation.
- This battery and bulb is not user serviceable.
- Do not insert foreign objects into this product.
- For indoor use.
- Do not discard or leave the battery near a heat source.
- Do not immerse in water.
- Don't leave the battery at very high temperature conditions.



WARNING: Eye damage caused by high light intensity. Never look directly into the light source.

BATTERY WARNING:

Risk of fire, explosion, and burns. Do not disassemble, crush, heat above 100° C / 212° F or incinerate. DISPOSE OF USED BATTERY PROMPTLY. KEEP AWAY FROM CHILDREN. DO NOT DISASSEMBLE AND DO NOT DISPOSE OF IN FIRE. When replacing battery, ensure the new battery is installed correctly with regard to polarity (+ and -) as shown on remote.

CAUTION:

Dispose of used battery promptly according to local recycling or waste regulations. Clean battery contacts and also device contacts prior to installing battery. Ensure the battery is installed correctly with regard to polarity (+ and -). Remove battery from remote when not being used for an extended period of time. Remove used battery promptly.

SAVE THESE INSTRUCTIONS

FCC STATEMENT

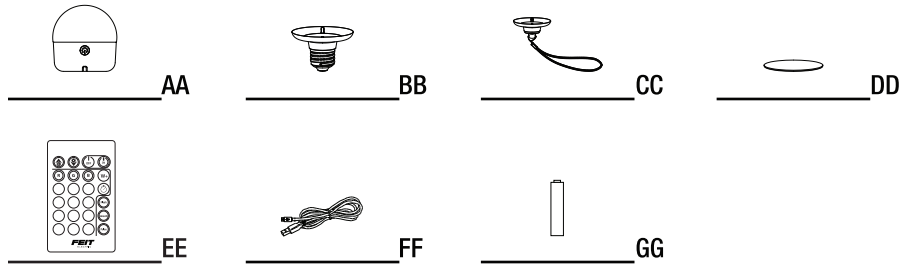
Supplier's Declaration of Conformity:
47 CFR § 2.1077 Compliance Information
Responsible Party: Feit Electric Company
4901 Gregg Road, Pico Rivera, CA 90660, USA
www.feit.com
Unique Identifier: OM60/RGBW/BAT/LEDI


This device complies with part 15 of the FCC Rules. Operation is subject to the following two conditions: (1) This device may not cause harmful interference, and (2) this device must accept any interference received, including interference that may cause undesired operation. Note: This equipment has been tested and found to comply with the limits for a Class B digital device, pursuant to part 15 of the FCC Rules. These limits are designed to provide reasonable protection against harmful interference in a residential installation. This equipment generates, uses and can radiate radio frequency energy and, if not installed and used in accordance with the instructions, may cause harmful interference to radio communications. However, there is no guarantee that interference will not occur in a particular installation. If this equipment does cause harmful interference to radio or television reception, which can be determined by turning the equipment off and on, the user is encouraged to try to correct the interference by one or more of the following measures: Reorient or relocate the receiving antenna. Increase the separation between the equipment and receiver. Connect the equipment into an outlet on a circuit different from that to which the receiver is connected. Consult the dealer or an experienced radio/TV technician for help. Any changes or modifications not expressly approved by the manufacturer could void the user's authority to operate the equipment.

Limited Warranty

This product is warranted to be free from defects in workmanship and materials for up to 1 year from date of purchase. If the product fails within the warranty period, please contact Feit Electric at info@feit.com, visit feit.com/contact-us for instructions on replacement or refund. REPLACEMENT OR REFUND IS YOUR SOLE REMEDY. EXCEPT TO THE EXTENT PROHIBITED BY APPLICABLE LAW, ANY IMPLIED WARRANTIES ARE LIMITED IN DURATION TO THE DURATION OF THIS WARRANTY. LIABILITY FOR INCIDENTAL OR CONSEQUENTIAL DAMAGES IS HEREBY EXPRESSLY EXCLUDED. Some states and provinces do not allow the exclusion of incidental or consequential damages, so the above limitation or exclusion may not apply to you. This warranty gives you specific legal rights, and you may also have other rights which vary from state to state or province to province.

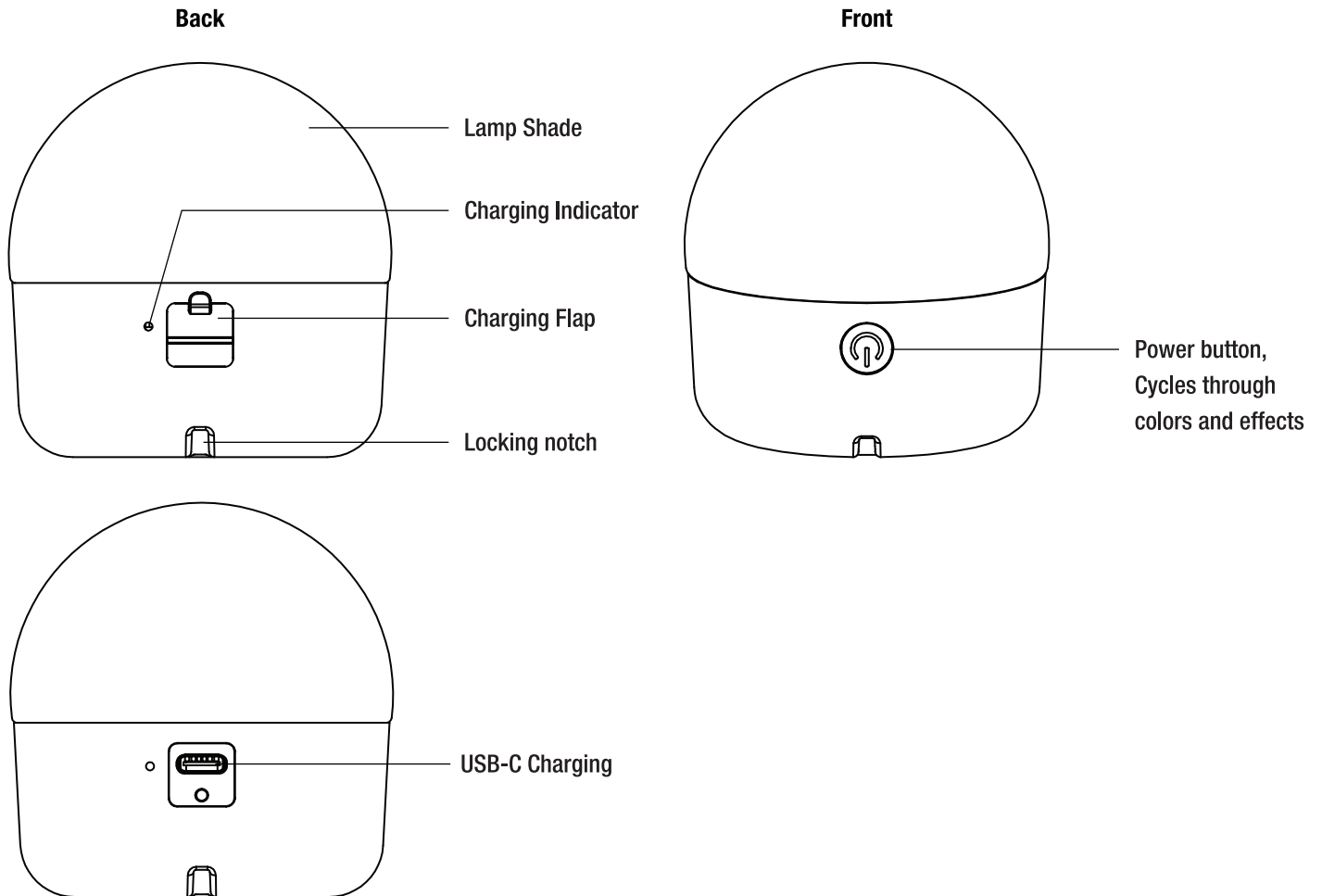
PARTS INCLUDED



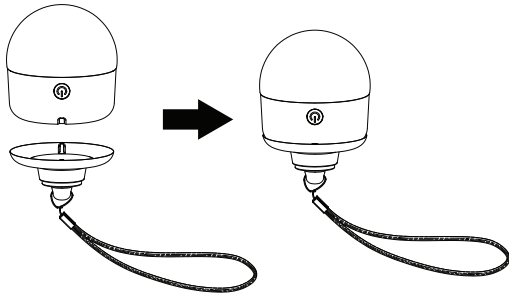
 **NOTE:** Parts not shown to actual size.

Part	Description	Quantity
AA	Rechargeable Bulb	1
BB	E26 Magnetic Base	1
CC	Magnetic hanging strap	1
DD	Custom magnetic mount	1
EE	Remote	1
FF	USB-C cable	1
GG	AAA Batteries	2

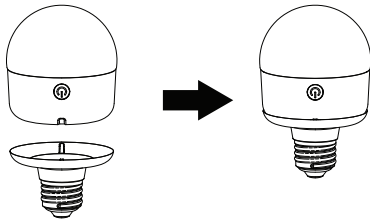
Parts of the Rechargeable bulb



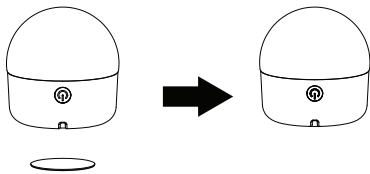
1 Magnetic hanging strap



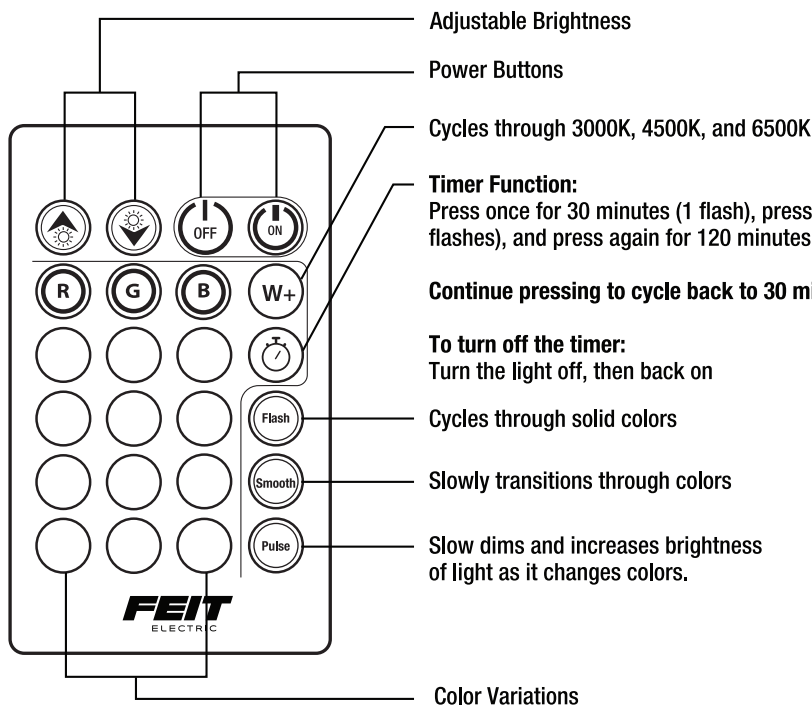
2 E26 Magnetic Base



3 Custom Magnetic Mount

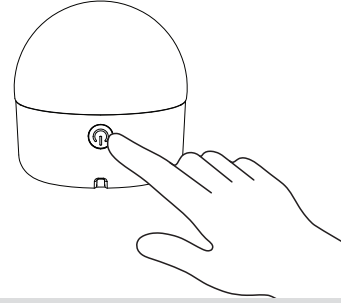


Remote Control Functions



1

- **Light Modes:**
Press once to cycle through modes: 3000K, 4500K, 6500K, Red, Green, Blue, Flash, Smooth, and Pulse.
- **Brightness Control:**
Press and hold to dim the light. Press and hold again to increase brightness.

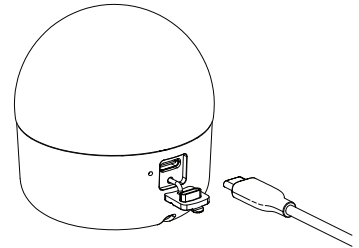


Charging the Rechargeable Bulb

1

Charging Instructions:

- Use the included USB-C cable to charge the device. Use a power source rated at 5V DC, 1A minimum.
- A red indicator light will turn on while charging and will turn off once fully charged.
- Charging Time: 6.5hrs
- Working Time: 7.5hrs on max brightness, 30hrs at min brightness. 10hrs on color animation.
- Max Charging Current: 750ma
- Battery Capacity: 3.7V 3000mAh



NOTE: Includes 2 AAA Batteries.