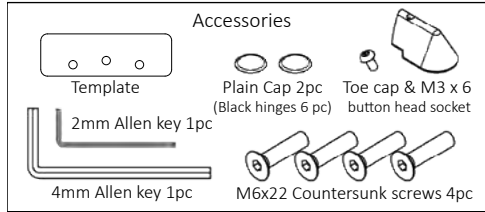


GLASSWAREHOUSE

NAL-HHOB90

SURF Glass to wall soft close hinge
Suitable for 8mm-12mm gate panel



Installation

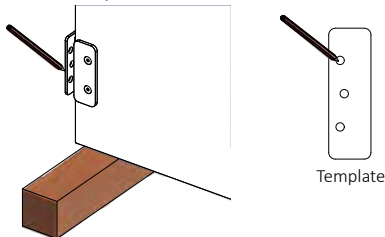
1. Check the wall or post alignment, making sure it is plumb and level. Also make sure the glass latch panel or post is plumb and in alignment.



Watch the install video



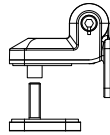
4. With the hinges attached to the gate panel rest it on blocks, position the gate plumb and at the level required. Mark the perimeter of the DW plate. Move gate aside and use the template to mark the screw hole locations.



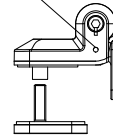
Countersunk screws M6x25 & washer 2pc for 10-12mm glass

BACK- inside

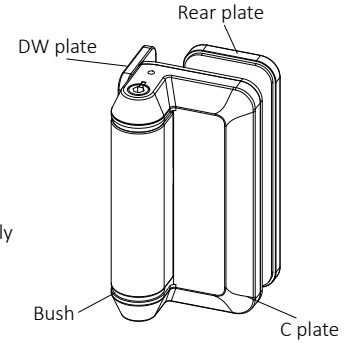
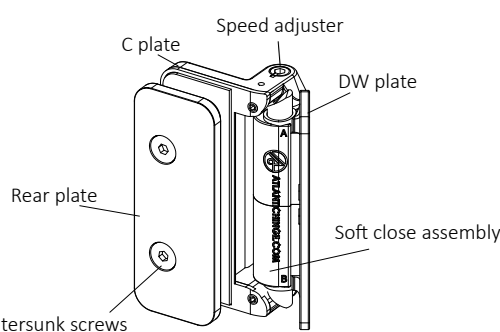
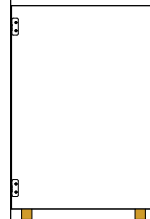
2. Undo the Countersunk screws completely, then take the rear plates off. Repeat the process for the second hinge.



Bottom hinge has Toe cap thread holes

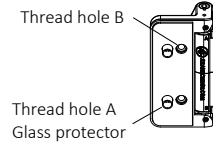


5. Remove the hinges from the gate and fix them to the wall or post. Place the gate on blocks in desired position and secure it to the hinges as per step 3. Tighten the countersunk screws then remove blocks and test carefully.

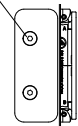


FRONT- outside

3. Lightly secure the hinges to the glass gate with the countersunk screws via Thread hole A or B. To use thread holes B, snap the glass protector off and place over the countersunk screw.



For 8mm glass gate use the M6x22 Countersunk screws



6. If the distance between the top surfaces of both hinges is over 900mm and the gap between the hinge panel and gate panel is 10mm or less then push the plain caps on both hinges. If not use the toe cap on the bottom hinge and the plain cap on the top hinge.

