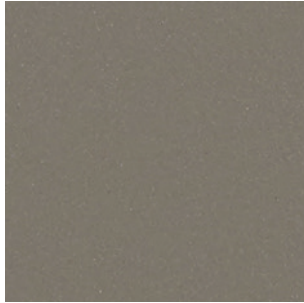


Retro Active 2.0

Porcelain Stone[®]

Available Colors - UPS and Polished



RET01 ▶ Antico Taupe UPS/PO



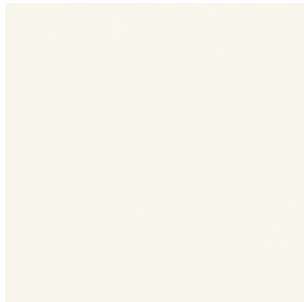
RET02 ▶ Seal Taupe UPS/PO



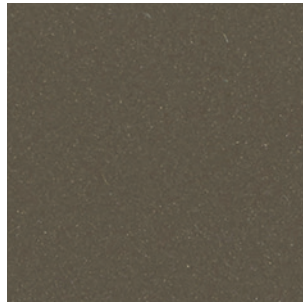
RET03 ▶ Featherstone UPS/PO



RET04 ▶ Empress White UPS/PO



RET05 ▶ Snow Blind UPS/PO



RET06 ▶ Roasted Chestnut UPS/PO



RET07 ▶ Leaden UPS/PO



RET08 ▶ Mercurial UPS/PO



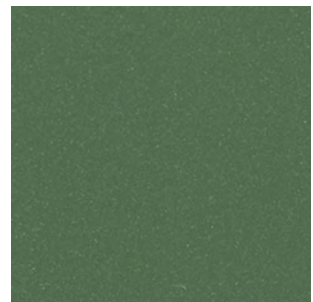
RET09 ▶ Phantom UPS/PO



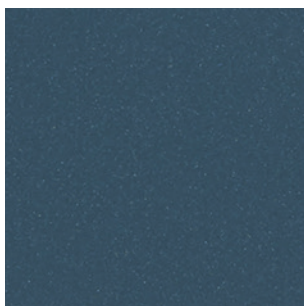
RET10 ▶ Armor UPS/PO



RET11 ▶ Gulf Breeze UPS/PO



RET12 ▶ Racing Green UPS/PO



RET13 ▶ Royal Navy UPS/PO

Features and Benefits

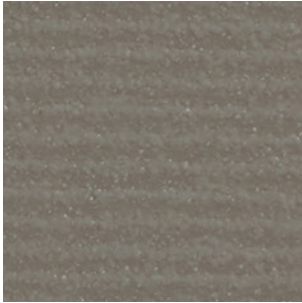
- Retro Active 2.0 includes the best-selling colors and in-demand sizes with a bold new finish option.
- 13 colors reflect a warm and cool neutral palette with exciting bright tones to enliven the mix, including super white and black.
- 8 sizes in polished and unpolished finishes and our complementary linear texture pattern pieces.
- Retro Active 2.0 pattern tiles, also in 13 colors, work in tandem or on their own to give dimension and a unique touch of texture.
- Ideal for any indoor application and exterior covered walls.
- Cross-Sheen[®] finish for easy cleaning
- Complementary 2 x 4 mosaic
- Made in the USA



Retro Active 2.0

Porcelain Stone[®]

Available Patterns Colors



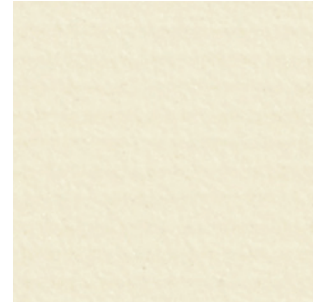
RET01 ▶ Antico Taupe PTN



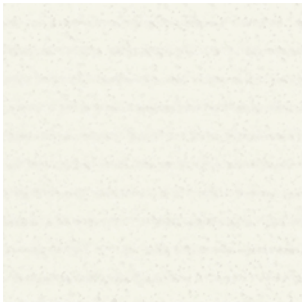
RET02 ▶ Seal Taupe PTN



RET03 ▶ Featherstone PTN



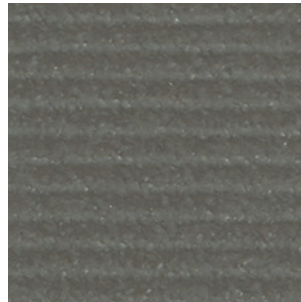
RET04 ▶ Empress White PTN



RET05 ▶ Snow Blind PTN



RET06 ▶ Roasted Chestnut PTN



RET07 ▶ Leaden PTN



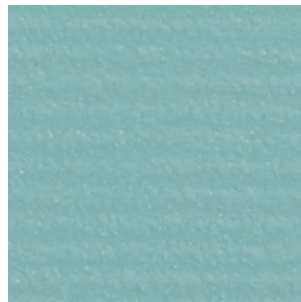
RET08 ▶ Mercurial PTN



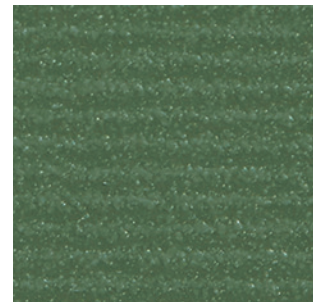
RET09 ▶ Phantom PTN



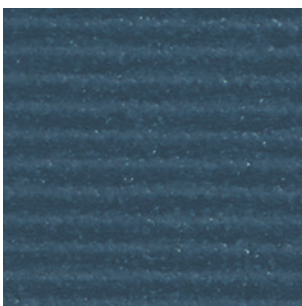
RET10 ▶ Armor PTN



RET11 ▶ Gulf Breeze PTN



RET12 ▶ Racing Green PTN

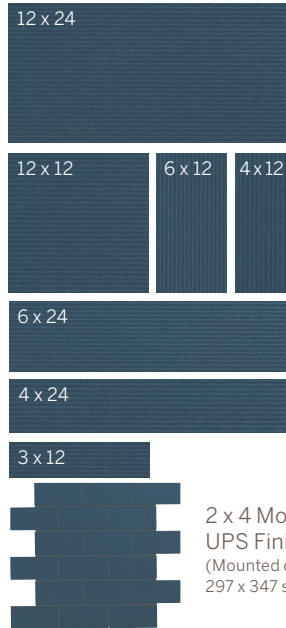


RET13 ▶ Royal Navy PTN

Retro Active 2.0

Porcelain Stone®

Sizes (Shown in RET13)



2 x 4 Mosaics
UPS Finish
(Mounted on an
297 x 347 sheet.)

Sizes & Finishes

Field Tile			Available in all colors	
Nominal (in)	Actual (in)	Thickness (in)	Grout Joint (in)	Finish
3 x 12 [†] *	2-3/4 x 11-3/4	5/16	3/16	UPS/PO/PTN
4 x 12 [†] *	3-3/4 x 11-3/4	5/16	3/16	UPS/PO/PTN
4 x 24 [†] *	3-3/4 x 23-3/4	5/16	3/16	UPS/PO/PTN
6 x 12 [†] *	5-3/4 x 11-3/4	5/16	3/16	UPS/PO/PTN
6 x 24 [†] *	5-3/4 x 23-3/4	5/16	3/16	UPS/PO/PTN
12 x 12	11-3/4 x 11-3/4	5/16	3/16	UPS/PO/PTN
12 x 24	11-3/4 x 23-3/4	5/16	3/16	UPS/PO/PTN

Crossville recommends a grout joint of 3/16 inch.
Actual measurements stated in inches indicate tile is calibrated (non-rectified).
Actual measurements stated in mm indicate tile is rectified.
[†] These cut/bevel tile is cut from larger format tile and the edges are beveled to provide factory appearance.
*These sizes are not a standard stocking item. Please allow 2-4 weeks for delivery depending on availability.
No set-up fee or handling charge applied.

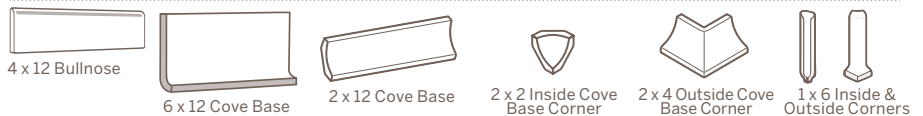
Mosaics

			Available in all colors	
Nominal (in)	Actual (in)	Thickness (in)	Grout Joint (in)	Finish
2 x 4 Mosaic	11-3/4 x 11-3/4	5/16	3/16	UPS

*Mesh mounted on 297 x 347 sheet with 3mm grout joint. Coverage area is 0.97sf.

Coordinating Trim

Nominal (mm)	Actual (in)	Thickness (in)	Grout Joint (in)	Finish
4 x 12 Single Bullnose	3-3/4 x 11-3/4	5/16	3/16	UPS/PO/PTN
6 x 12 Cove Base	5-7/8 x 11-3/4	3/8	3/16	UPS
2 x 12 Cove Base	1-3/4 x 11-11/16	3/8	3/16	UPS
1 x 6 Inside Corner	1 x 5-7/8	NA	3/16	UPS
2 x 2 Inside Corner	1-3/4 x 1-3/4	NA	3/16	UPS
1 x 6 Outside Corner	1 x 5-7/8	NA	3/16	UPS
2 x 4 Outside Corner	1-3/4 x 3-1/2	NA	3/16	UPS



Product Performance

Breaking Strength	>350 lbf	ASTM C648
Bond Strength	>200 psi	ASTM C482
Chemical Resistance (UPS, PTN)	Class A	ASTM C650
Chemical Resistance (PO)	Class B	ASTM C650
Frost Resistance	Resistant	ASTM C1026
Water Absorption	<0.20%	ASTM C373
Scratch Hardness	7	Mohs Scale

Wet Dynamic Coefficient of Friction Range

UPS	0.50 - 0.60	AcuTest SM
PO	0.31 - 0.41	AcuTest SM
PTN	0.42 - 0.52	AcuTest SM

Shade & Texture Index

Retro Active 2.0 has a shade variation of V1.



This porcelain tile product is produced with a V1 variation. Differences among pieces from the same production run are minimal. Inspect the product upon delivery and for best results, blend tile from several cartons during installation.

Crossville® Sample Express

Complimentary Samples are available at CrossvilleInc.com/products/retro-active-2-0/

Samples may also be ordered through customer service by email or phone.

Sample fulfillment & Help Line
Samples@CrossvilleInc.com
1 800 221.9093

*Loose Samples for
Architects & Designers*

Loose Tile Samples

Sizes may vary depending on product series

Max. of 4 large field tile per order

Replacement Chips for PSS Rack

Max. of 5, 2 x 2 chips per color

Standard Shipping

UPS Ground

Retro Active 2.0

Crossville, Inc.

PO Box 1168
Crossville, TN
38557

Phone 931.484.2110
Fax 931.456.2956
E-Mail Crossc@CrossvilleInc.com
Web CrossvilleInc.com

Recommended Use

Retro Active 2.0 is recommended for interior floors, walls, counter tops and exterior walls in both residential and commercial applications. **If offset pattern is required for tiles 15 inches or longer, Crossville® recommends an offset of not greater than 33%.** See CrossvilleInc.com for detailed installation instructions.

Polished Tile

For polished tiles, the use of a penetrating type sealer is required prior to grouting. Grouts should be tested to determine if the grout or grout pigment will contaminate the surface of the tile and may require more than one coating of sealer before proceeding to the entire installation.

Wet area use for Retro Active 2.0 Mosaics

Crossville® produces the Retro Active 2.0 mosaics with an unpolished finish. The AcuTestSM wet Dynamic COF of Retro Active 2.0 is $\geq .50$. Their small size ensures frequent grout joints which provides traction and drainage. Crossville cannot control situations involving incorrect installation, improper slope to the drain for elimination of standing water and poor surface cleaning.

This information is provided so that customers may make a realistic and informed decision when comparing Retro Active 2.0 to other tile products in wet area environments, such as residential/commercial bathrooms, showers, and interior pool decks.

Environmentally Conscious

Retro Active 2.0 contains a minimum of 4% pre-consumer recycled content and is manufactured by Crossville® using processes that recycle nearly 12 million pounds of previously discarded filtrate and fired tile waste. In addition to its own fired waste recycling, Crossville also accepts and recycles reclaimed, previously installed tile through its Tile Take-Back™ Program. For more information, visit CrossvilleInc.com/green.

Care and Maintenance

Regular cleaning is the best way to keep Retro Active 2.0 tile looking good for years to come. Use clean, hot water (combined with a household cleaner for more aggressive cleaning). Rinse thoroughly and dry with a soft cloth to prevent water spots. No waxes or sealers are needed. More information regarding the care and maintenance of Crossville products is available at CrossvilleInc.com.

Our Warranty

Crossville Inc guarantees that its products will meet or exceed the performance specifications outlined in ANSI A137.1-2012 and in the performance data section of the Crossville, Inc. general product catalog. For complete details check our website at CrossvilleInc.com.

Hydrotect

Our porcelain tiles are available with Hydrotect. Crossville's revolutionary invisible coating harnesses the power of light, water, and oxygen to create the best defense against dirt and pollution. Whether indoors or out, floors and walls stay cleaner, providing a superior experience in any space. For complete details check our website at CrossvilleInc.com.

 **HYDROTECT™**
by  **CROSSVILLE.**

National Accounts

For over 20 years we have been offering Porcelain tile to commercial customers at National Accounts pricing programs with special discounts. The National Accounts department provides materials forecasting, sales support and samples.

Exterior Cladding

Crossville's Porcelain Stone® Exterior Cladding Systems are suitable for virtually any conventional masonry application. When used in conjunction with our exterior cladding systems, Crossville's Porcelain Stone offers clear advantages: decreased construction costs, less site disturbance, low-to-zero maintenance after installation, accelerated construction schedules and greater strength than traditional masonry.

Information listed here is subject to change. Please refer to CrossvilleInc.com for the latest, most accurate information.



RET07 ▶ Leaden 12 x 24 UPS

Trade Organizations



Environmentally Aware



F5-RET-18
REV 02-21