

30U / 41U Vertical Server Rack Cable Manager with Hinged Cover

CABLMANAGER3 / CABLMANAGER4

DE: Bedienungsanleitung - de.startech.com

FR: Guide de l'utilisateur - fr.startech.com

ES: Guía del usuario - es.startech.com

IT: Guida per l'uso - it.startech.com

NL: Gebruiksaanwijzing - nl.startech.com

PT: Guia do usuário - pt.startech.com

Packaging Contents

- 1 x Cable Manager (CABLMANAGER4 is 2 pieces)
- 8 x M8 Screw, Nut and Washer

System Requirements

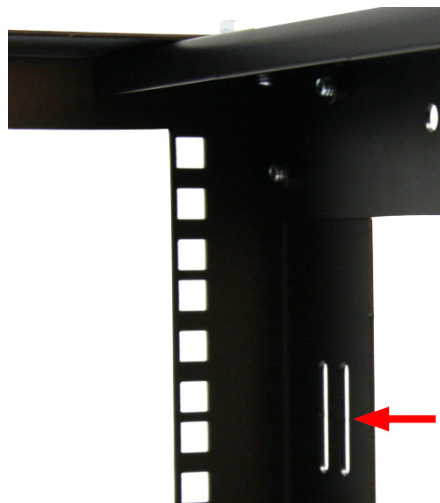
- Open Frame server rack (2 or 4 post)

Required Tools

- 2 x Adjustable Wrench

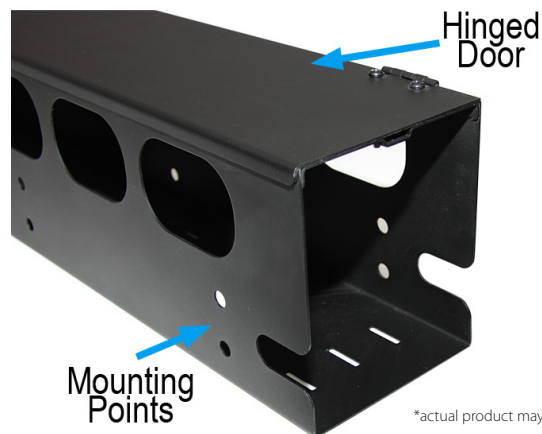
Installation

1. If the rack uses L-style vertical posts, locate the mounting points along the outer side of the posts. Ensure they line up correctly to the mounting points along the side of the Cable Manager.



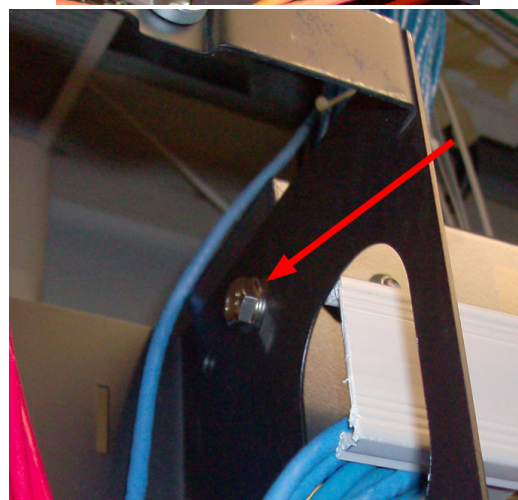
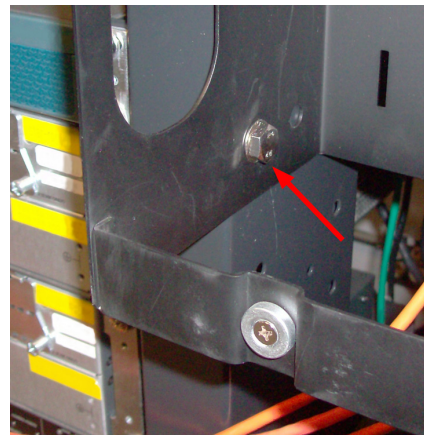
*Photos are for reference only

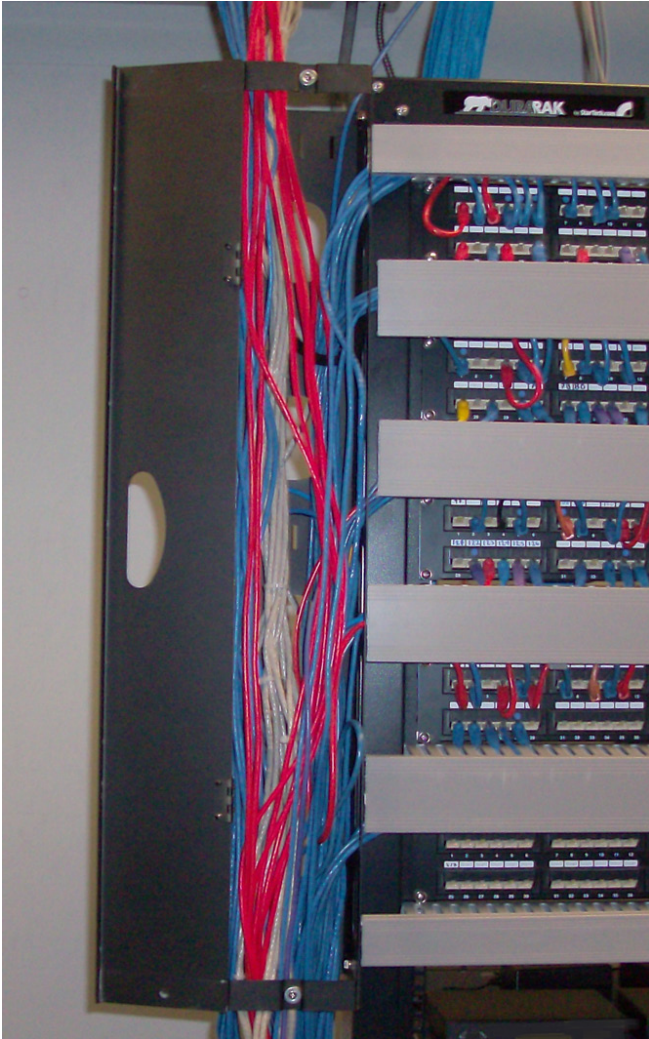
NOTE: Some racks may not have these mounting points, so may need to be drilled or otherwise modified to accommodate the Cable Manager.



*actual product may vary from photos

2. Using the screw, washer and nut, secure the Cable Manager to the side of the vertical rack posts. At minimum, make sure the bottom and top of the Cable Manager are properly secured.





Specifications

	CABLMANAGER3	CABLMANAGER4
Color	Black	
Material	Steel	
Mounting Height	30U	41U
Dimensions (HxWxD)	1350.0mm x 130.0mm x 160.0mm	920.0mm x 130.0mm x 160.0mm
Weight	7350g	10500g

Use of Trademarks, Registered Trademarks, and other Protected Names and Symbols

This manual may make reference to trademarks, registered trademarks, and other protected names and/or symbols of third-party companies not related in any way to StarTech.com. Where they occur these references are for illustrative purposes only and do not represent an endorsement of a product or service by StarTech.com, or an endorsement of the product(s) to which this manual applies by the third-party company in question. Regardless of any direct acknowledgement elsewhere in the body of this document, StarTech.com hereby acknowledges that all trademarks, registered trademarks, service marks, and other protected names and/or symbols contained in this manual and related documents are the property of their respective holders.

Technical Support

StarTech.com's lifetime technical support is an integral part of our commitment to provide industry-leading solutions. If you ever need help with your product, visit www.startech.com/support and access our comprehensive selection of online tools, documentation, and downloads.

For the latest drivers/software, please visit www.startech.com/downloads

Warranty Information

This product is backed by a lifetime warranty.

In addition, StarTech.com warrants its products against defects in materials and workmanship for the periods noted, following the initial date of purchase. During this period, the products may be returned for repair, or replacement with equivalent products at our discretion. The warranty covers parts and labor costs only. StarTech.com does not warrant its products from defects or damages arising from misuse, abuse, alteration, or normal wear and tear.

Limitation of Liability

In no event shall the liability of StarTech.com Ltd. and StarTech.com USA LLP (or their officers, directors, employees or agents) for any damages (whether direct or indirect, special, punitive, incidental, consequential, or otherwise), loss of profits, loss of business, or any pecuniary loss, arising out of or related to the use of the product exceed the actual price paid for the product. Some states do not allow the exclusion or limitation of incidental or consequential damages. If such laws apply, the limitations or exclusions contained in this statement may not apply to you.