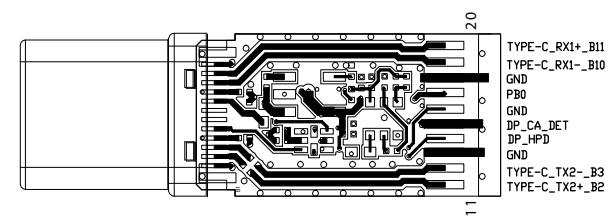
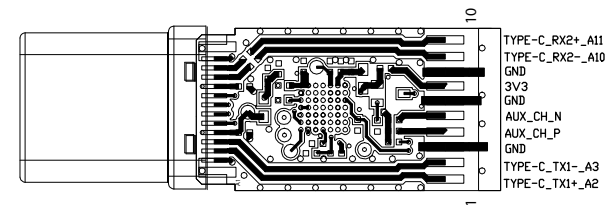
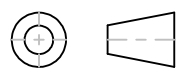


WIRE LIST

P2 TYPE C	PAIR#	SIGNAL	COLOR	P1 (DP)
1	PAIR1	YTPE-C TX1+ A2	WHITE	6
2		YTPE-C TX1- A3	YELLOW	4
3		GND	DRAIN	5
20	PAIR2	YTPE-C RX1+ B11	WHITE	3
19		YTPE-C RX1- B10	BLUE	1
18		GND	DRAIN	2
12	PAIR3	YTPE-C TX2- B3	WHITE	7
11		YTPE-C TX2+ B2	RED	9
13		GND	DRAIN	8
9	PAIR4	YTPE-C RX2- A10	WHITE	10
10		YTPE-C RX2+ A11	PURPLE	12
8		GND	DRAIN	11
17	SIGNAL	CONFIG2	GREY	14
5	PAIR5	AUX CH N	PURPLE	17
4		AUX CH P	YELLOW	15
6	SIGNAL	GND	BLACK	16
14	SIGNAL	PD HPD	RED	18
15	SIGNAL	CONFIG1	WHITE	13
16	SIGNAL	PGND	GREEN	19



THIRD ANGLE PROJECTION



StarTech.com

GENERAL NOTES		PRODUCT ID	CDP2DP146B	
DIMENSIONS ARE IN MM - DO NOT SCALE		DESCRIPTION	6ft/1.8m USB C to DisplayPort 1.4 Cable	
THIS DOCUMENT CONTAINS CONFIDENTIAL, PROPRIETARY INFORMATION THAT IS PROPERTY OF STARTECH.COM		DO NOT SCALE	SHEET: 1 OF: 1	UPLOAD DATE: 5/21/2024