

How to Use the Measuring Tool Set

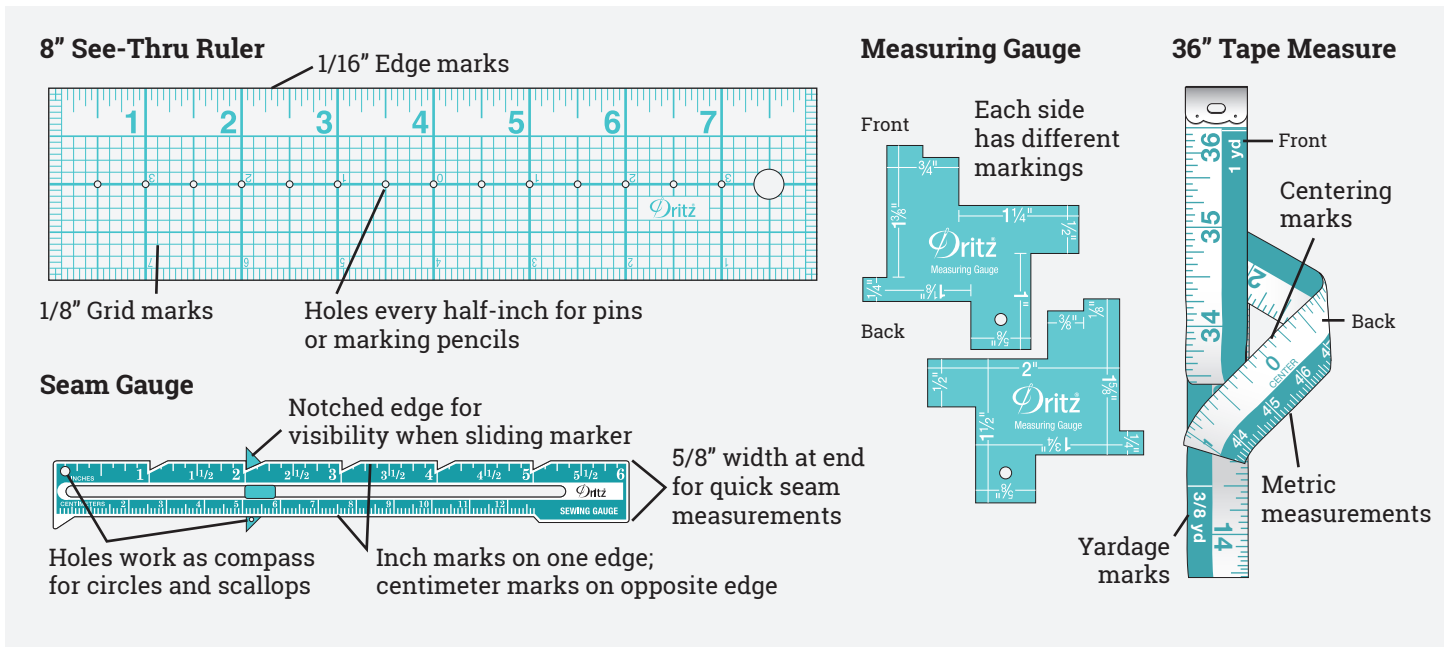
What are the Measuring Tools and what are they for?

Measuring is done in close quarters—around shapes, along edges, from one edge to another, in greatly varying distances. A measuring tool should be accurate, but also handy and easy to use. Different projects call for different tools.

This compact **Measuring Gauge** has multiple notched edges so seam allowances can be easily gauged. Just turn it to find the measurement required. The **Seam Gauge** is a must-have in any sewing room. The sliding marker aligns fabric edges with the required measurement, and is easily visible along inch-marked notched edge. Use the hole at the end with the hole in the marker as a compass to draw scallops and circles. Everyone needs an extra tape measure. This **36" Tape Measure** is special. The shorter yardstick length is easy to control when a longer tape might get tangled or slide to the floor. The front side has inch and yard marks. The back side has metric along one edge and centering marks along the opposite edge. Last but not least is the **8" See-Thru Ruler**. Grid-marking and large numbers make it great for quick alignment; use the inch-marked holes for guidance in placing buttons or a myriad of other spacing requirements.

You will need:

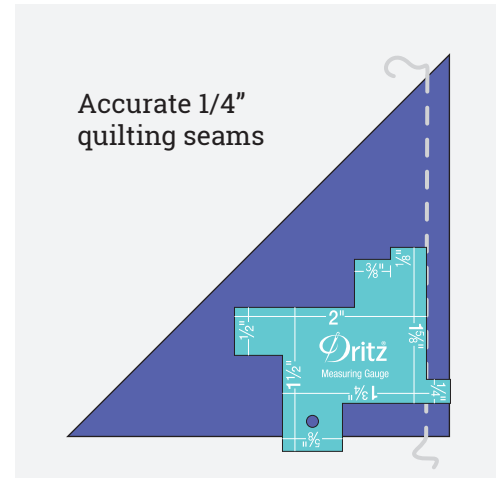
- Measuring Tools: Measuring Gauge, Seam Gauge, 36" Tape Measure and 8" x 2" See-Thru Ruler
- Marking Pencil
- Straight Pins
- Your project



How to Use a Measuring Gauge

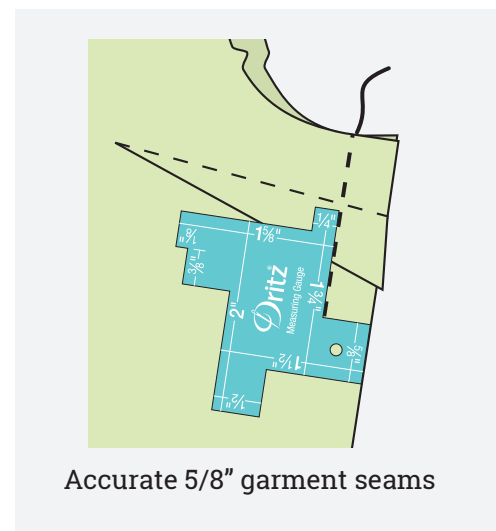
Quilting:

Quilters know that an accurate 1/4" seam is required for a uniform appearance. Seams must press flat with minimum bulk and be accurate so quilt squares match in size. The 1/4" extension allows you to quickly check the accuracy of the seam measurement.



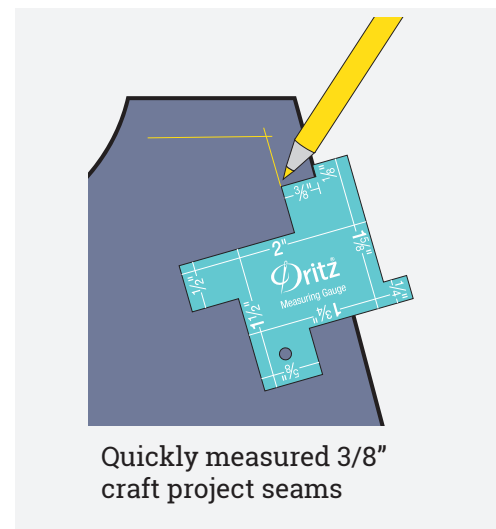
Garment Sewing:

Traditionally pattern seam allowance on commercial patterns was 5/8" and still is. However, many indie pattern companies use a 1/2" seam allowance. Both of these often-used sizes are on the gauge. Simply turn the gauge to find the correct measurement.



Crafting:

A 1/4" or 3/8" seam allowance is commonly used on craft patterns. This small size is perfect for creating clean seam lines with no bulk. It also saves time trimming seams. Choose the corner with the extension marked with the required size to measure and mark or to check the seams as you stitch.



How to Use a Seam Gauge

Seam Allowances:

This is the go-to measuring device for sewists. Check a seam allowance by sliding the marker to the chosen width (1/2" or 5/8" for example). The marker stays in place to check multiple places.

Hems:

Your garment is cut and sewn, but remains unhemmed. Choose the desired hem depth and slide the marker to this number. Place gauge so marker is at the edge of the fabric. Move the gauge along the edge of the fabric, pin marking the hem depth as you go.

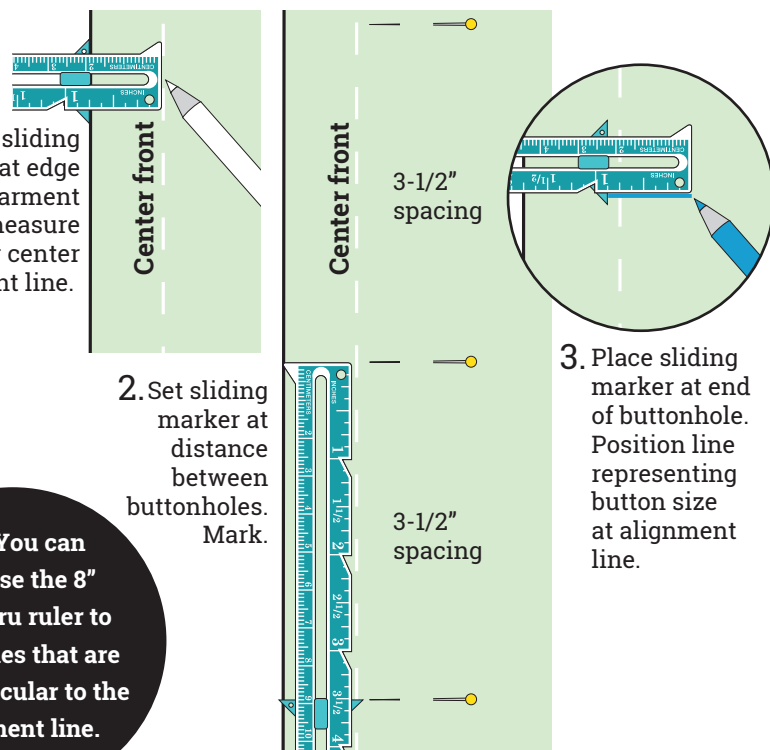
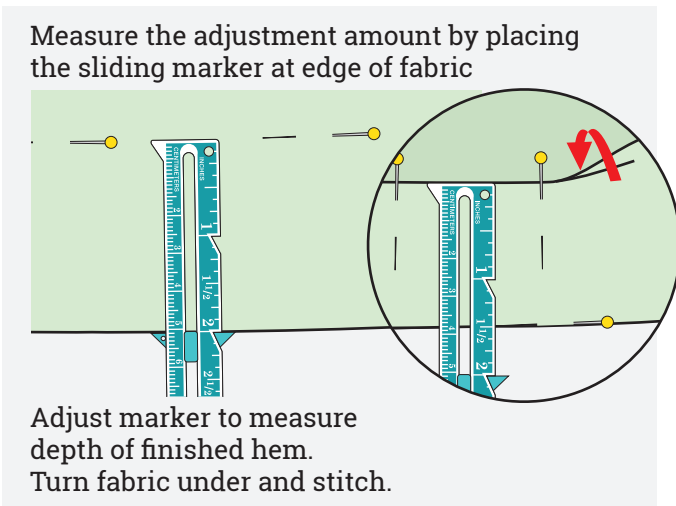
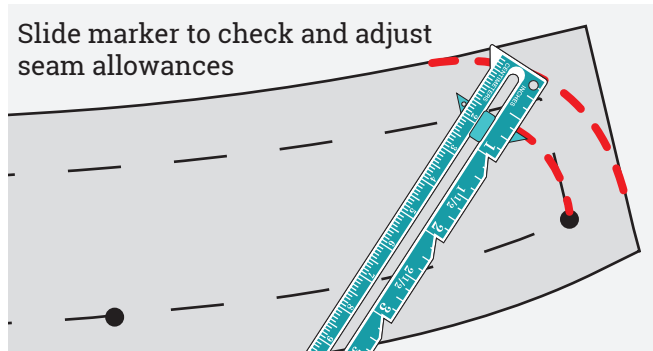
Marking Buttonhole Spacing:

Multiple buttonholes on a garment must be spaced evenly.

1. Mark alignment line for buttonholes (center front for example).
2. Choose the spacing you would like; slide marker to this distance. Marker stays in place while in use. Mark positions.
3. Determine buttonhole length by measuring diameter plus thickness of button. (Usually 1/8" longer than width of button. Always test first.) Set gauge to this length. Place gauge so slider is at one end of buttonhole with end of gauge at opposite end. The 1/8" mark representing length of button will sit at alignment line.

1. Place sliding marker at edge of garment to measure for center front line.

TIP: You can also use the 8" See-Thru ruler to draw lines that are perpendicular to the alignment line.



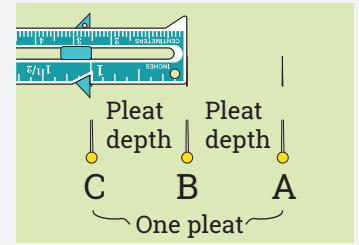
TECHNIQUE TUTORIAL

Spacing Tucks and Pleats:

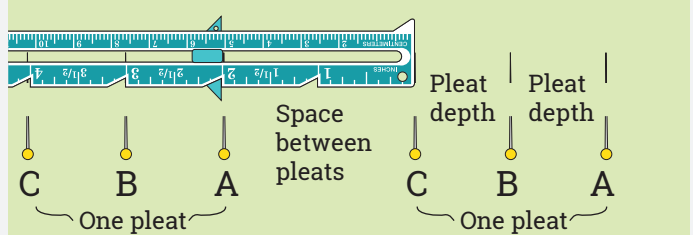
Marking evenly spaced tucks or pleats must be accurate for correct fit and finished appearance. A seam gauge saves time and creates just the look you want!

- 1. Plan:** Determine depth of each pleat and the desired distance between pleats.
- 2. Mark pleat depth:** Slide gauge marker to depth of pleat. Place a mark at beginning of first pleat (A); place two more marks equal to pleat depth (B and C).
- 3. Mark space between pleats:** Adjust marker to distance between pleats. Place a mark at this distance. This will be mark A for the next pleat.
- 3. Repeat steps 2-3 until complete.**
- 4. Finish:** Bring pleat mark A to mark C. Mark B will be the inner fold. Folds can be pinned to left or right. Stitch to hold as desired.

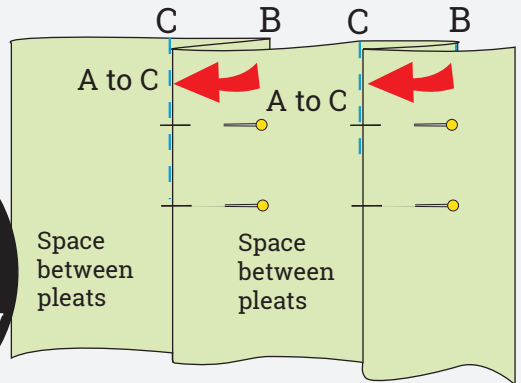
Set gauge to depth of pleat and mark pleat with 3 marks: A, B and C.



Set gauge to width of space between pleats. Mark. This mark is beginning of next pleat.



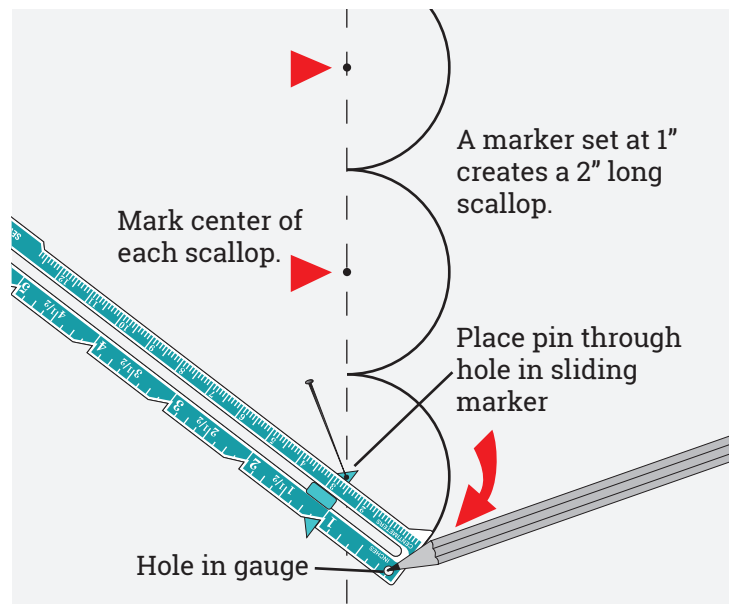
Bring A to C to form pleat. Pin; stitch.



TIP: To estimate fabric width for pleats, add together 2 x pleat depth and distance between pleats. Multiply by number of pleats.

Marking Scallops:

The two round holes are used together to make scallops. Mark a straight line from which the scallops will extend. Determine scallop length. Divide this amount in half. Place dots on the line spaced to match length of each scallop; dots will be at center of each scallop. Slide marker to the divided amount (Example: 2" scallop has marker at 1"). Place a straight pin or push pin in the tiny hole in the sliding marker; insert this in a marked dot on the line. Place the point of a pencil in the hole at 1-inch end of gauge. Hold marker pin in place on the line and swing gauge causing pencil point to draw a curved line. Repeat as needed, starting at each marked dot.



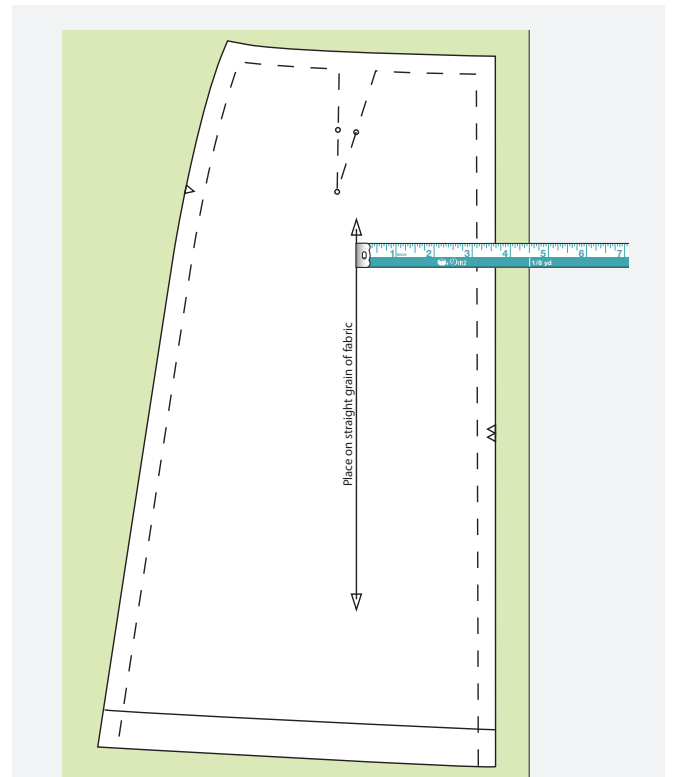
How to Use a 36" Tape Measure

Standard Measuring:

This handy tape measure is actually a flexible yardstick. The 36" length works like any other tape measure. It is simply shorter so it doesn't get in the way of other tools on your work surface or slip off your table.

Measuring Grain Line:

Measure from selvage edge to marked pattern grain line to ensure that fabric grain is placed as pattern design intends. Keeping the fabric grain parallel to marked arrow on your pattern will ensure a garment that hangs evenly. Always measure from each end of printed arrow on pattern to selvage edge; pin pattern to secure before cutting.



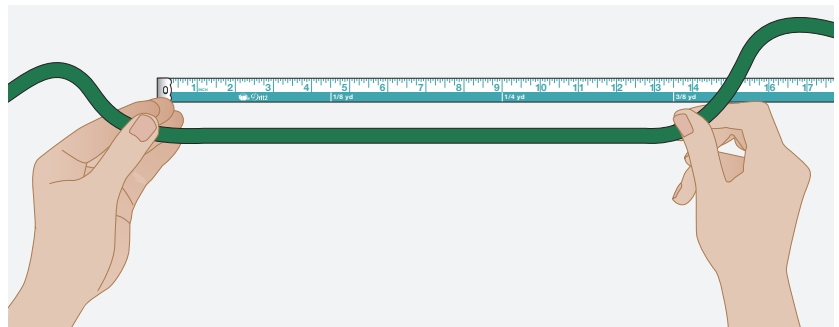
Centering:

The centering guide helps quickly align plackets or position appliqués and decorative trims.



Measuring Yardage:

Project instructions most often call for trims or elastic measured in yards. Use the convenient yardage markings on front side of the tape measure to quickly measure increments of 1/8-, 1/4-, 3/8-, 1/2-, 5/8-, 3/4-, 7/8- or 1 yard.



How to Use an 8" See-Thru Ruler

Standard Measuring Projects:

This light-weight transparent ruler is great for table-top projects and is small enough to easily take to the classroom. Multiple markings, such as 1/16" marks on the outer edge and 1/8" grid marks offer quick alignment.

Pin Marking:

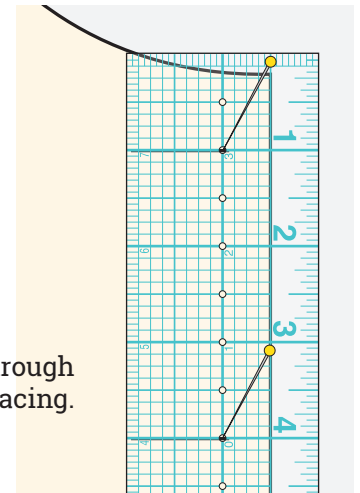
Use the centering holes at center of ruler to evenly space buttonholes, tucks and pleats. Simply push a straight pin through the centered holes.

Enlarging Patterns:

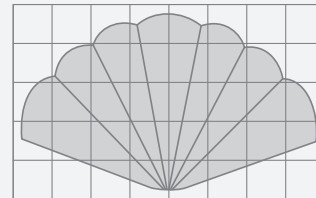
To enlarge patterns on grids, draw a grid to match the scale required. Draw the same line within each square corresponding the those on the pattern.

Measuring curves:

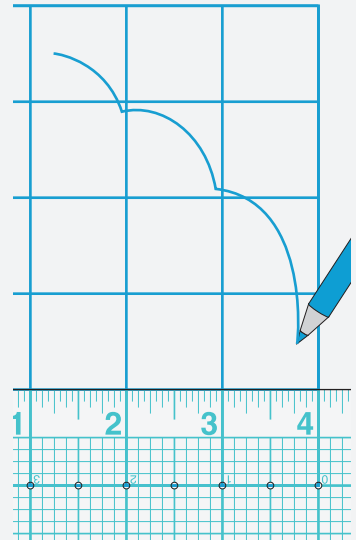
The See-Thru Ruler is flexible and can bend slightly to measure curved edges. To do this, place the end at the starting point. Carefully bend the ruler so that the edge matches the curve to be measured. Don't force it to bend further. Make a note of the amount of measured area; slide the ruler, bend as needed and repeat. Add up your accumulated measurements.



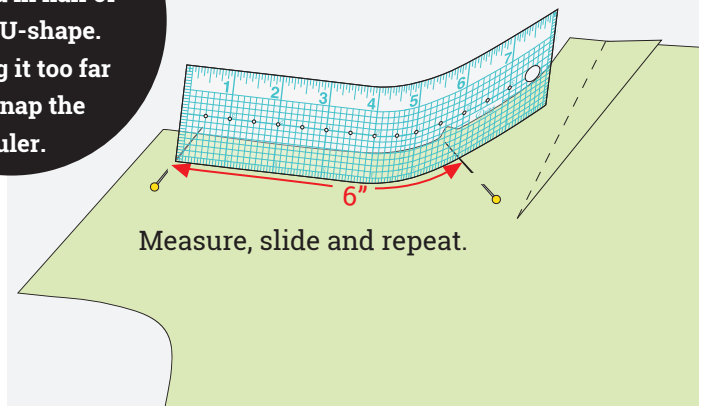
Pin-mark through holes for exact spacing.



Draw a grid on original design. Copy lines within each grid to enlarge patterns and designs.



Keep in mind that the ruler can not bend in half or into a U-shape. Bending it too far will snap the ruler.



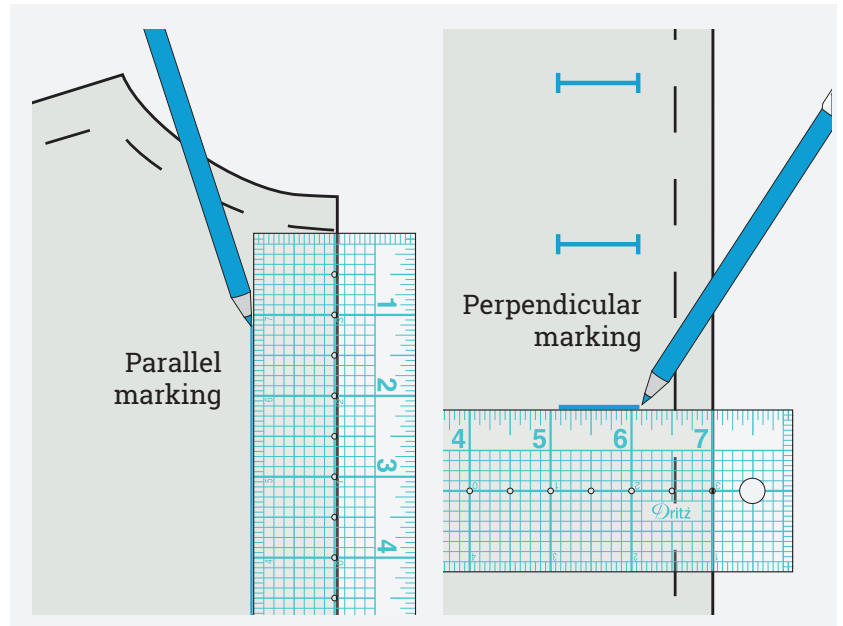
Measure, slide and repeat.



TECHNIQUE TUTORIAL

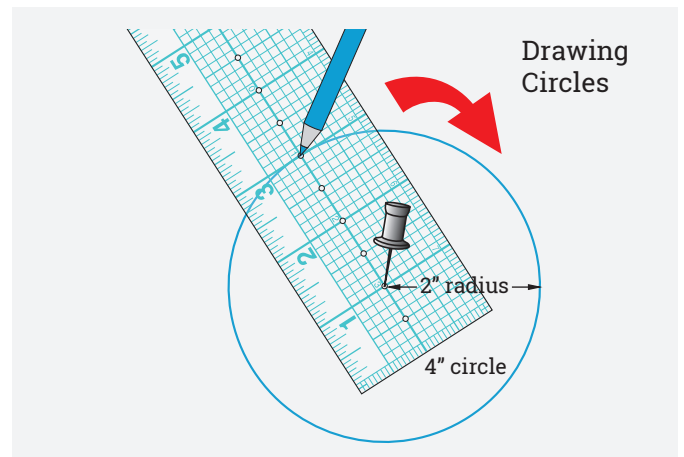
Establishing Parallel or Perpendicular Lines to Redesign Patterns or Add Seam Allowances.

Line up any grid line on ruler to pattern line to create a parallel line. Use cross grid lines to create perpendicular lines.



Drawing Circles:

Determine circle diameter; divide this in half (radius). Radius must be in half-inch increments. Anchor the ruler with a push pin in one hole and place pencil point in hole corresponding to amount of radius. Rotate ruler like a compass to draw a circle.



Drawing Scallops:

Establish a baseline. Determine finished width of scallop and divide that number in half (radius). Radius must be measured in full inch increments. Place push pin in one hole on base line and place point of pencil in hole corresponding to radius. Pivot ruler from push pin to draw scallop. Repeat.

