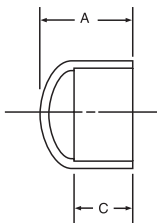


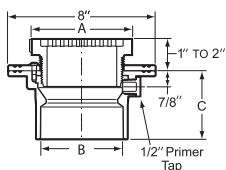
PART NO. AW 116C

SIZE	Cap SOCKET	
	A	C
1½	1 ¹⁵ / ₁₆	1 ⁵ / ₁₆
2	2 ⁵ / ₃₂	1 ³ / ₈
3	2 ¹⁵ / ₁₆	1 ²⁹ / ₃₂
4	3 ¹ / ₈	2 ¹ / ₃₂
6	4 ³ / ₄	3 ⁵ / ₈
8	6 ¹³ / ₃₂	4


PART NO. AW 150MC

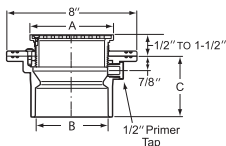
**Floor Drain with CPVC Adjustable Top
with 5" Round Grate and Membrane Collar**

SIZE	A	B	C
1½ x 5	5	1½	4 ³ / ₁₆
2 x 5	5	2	4
3 x 5	5	3	4
4 x 5	5	4	3¾


PART NO. AW 160MS**

**Floor Drain with Stainless Steel
Adjustable Top with 6" Round Grate and
Membrane Collar**

SIZE	A	B	C
1½ x 6	6	1½	4 ³ / ₁₆
2 x 6	6	2	4
3 x 6	6	3	4
4 x 6	6	4	3¾



** Floor drains with Stainless Steel tops are rated as "Heavy Duty" per ASME A 112.6.3. Stainless Steel drain tops, grates on floor drains and floor cleanouts are purchased items and not of domestic manufacture.