

How to Use a Measure & Mark Ruler

What is a Measure & Mark Ruler? This uniquely crafted ruler offers many options for use. It measures 4-1/8" wide x 18" long, with both centering inch-marked numbers and sequential numbers along one edge and centimeters along the opposite edge. The short ends are marked in common seam allowance measurements used for dressmaking and crafts with inches on one end and centimeters on the opposite end. Yardage marks are indicated as well as 45° angle lines. Slots allow you to not only measure with precision, but mark within the ruler without moving it. This convenient all-purpose ruler will be your go-to ruler for garment construction and crafts.

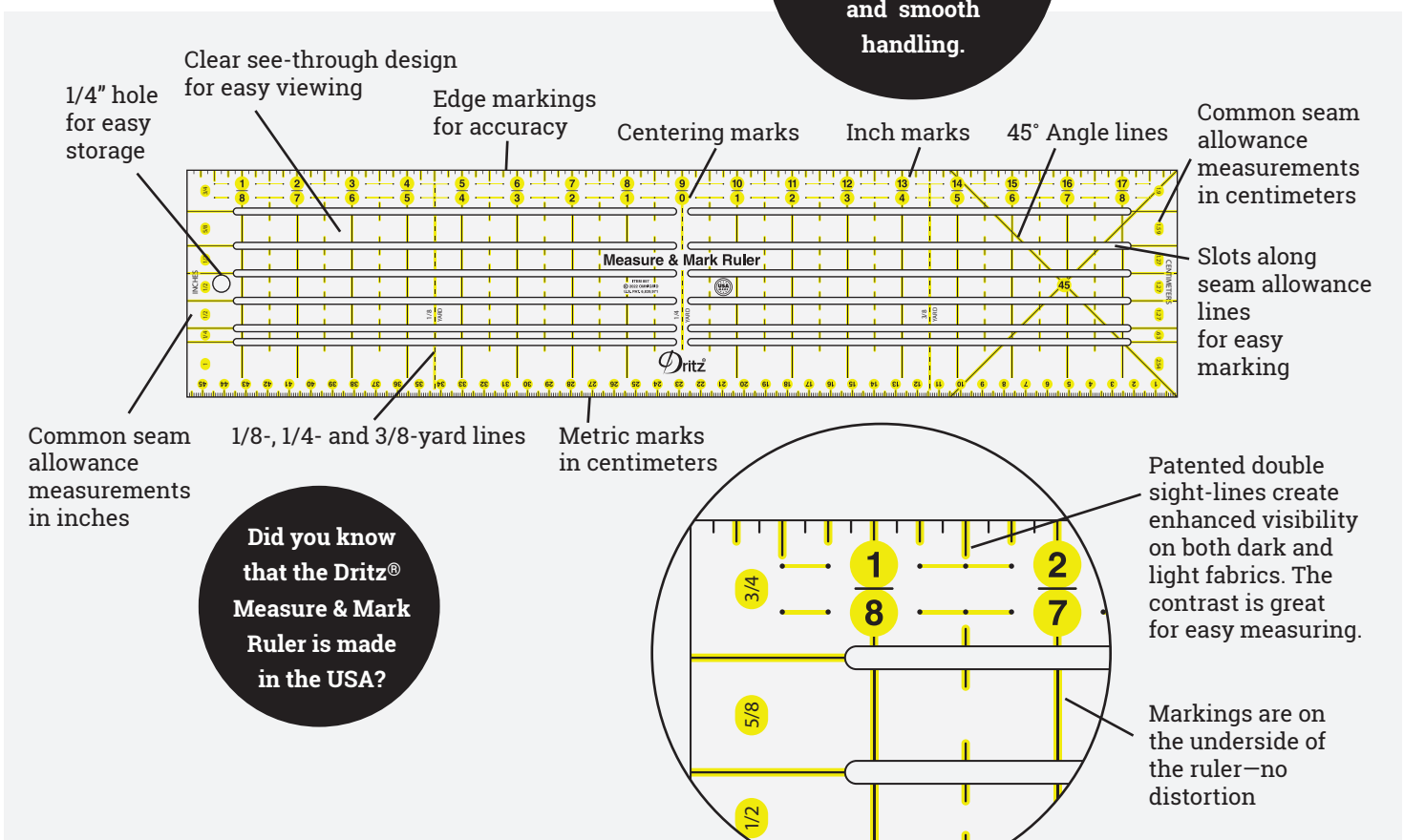
You will need:

- Measure & Mark Ruler
- Marking pencils

Optional for modifying patterns or apparel:

- Dress form
- Tissue paper or tracing paper

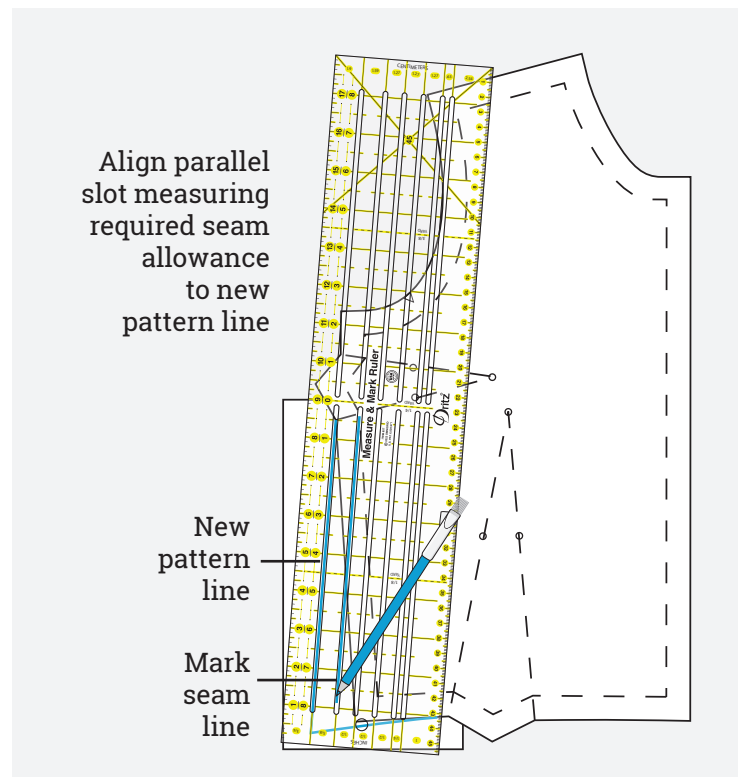
The Dritz® Measure & Mark Ruler is laser cut for accuracy, consistency, and smooth handling.



How to Use a Measure & Mark Ruler for Garment Construction:

Adjusting Patterns:

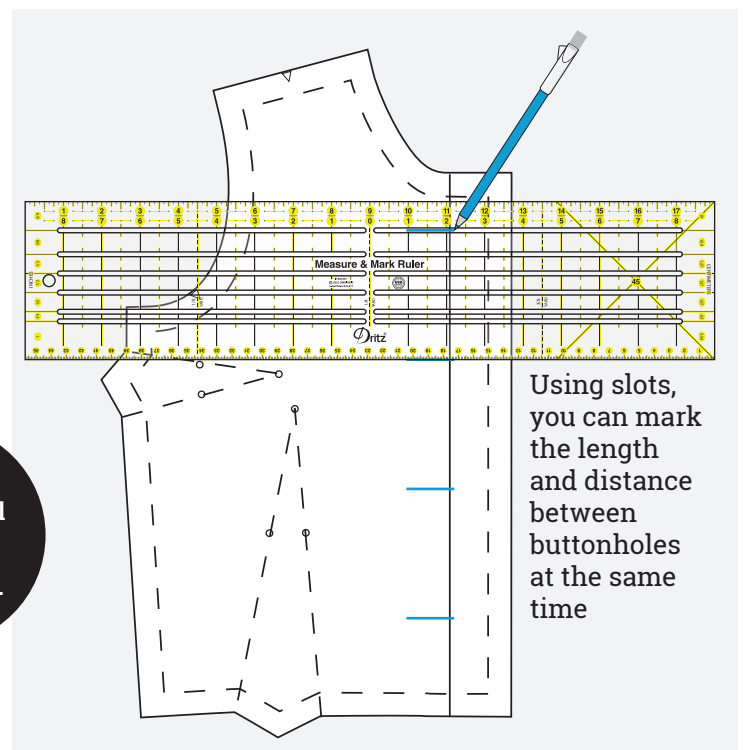
When making design or fitting changes to a commercial pattern, it is best to maintain the same seam allowance as the original pattern. To alter the pattern, first tape tissue or tracing paper to the underside of your printed pattern. Draw the new desired line, continuing it onto the added paper as needed. Align the ruler to the marked line. Choose a parallel slot measuring $\frac{1}{4}$ ", $\frac{1}{2}$ ", $\frac{5}{8}$ ", $\frac{3}{4}$ " or 1" from the line. Draw the new parallel line for seam allowance.



Marking for Placement and Spacing:

Mark exact spacing quickly on garments with multiple buttons and pockets. If you have altered your pattern, these markings will have to be remeasured and marked. Mark position for the first buttonhole. Use slots or edge markings on the ruler to mark equal spacing for the additional buttonholes. Use the marked buttonhole placement to mark position for buttons.

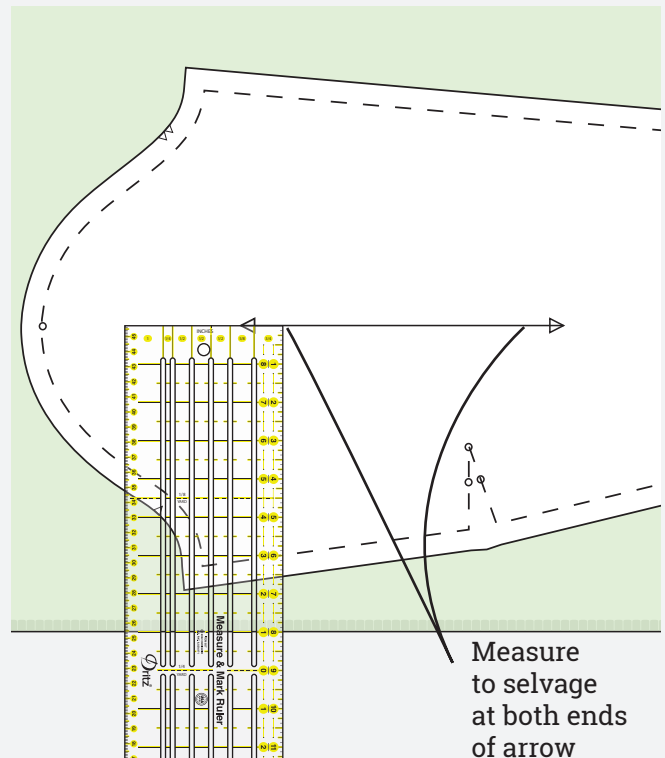
TIP: Use a sharp pencil point for best results.



TECHNIQUE TUTORIAL

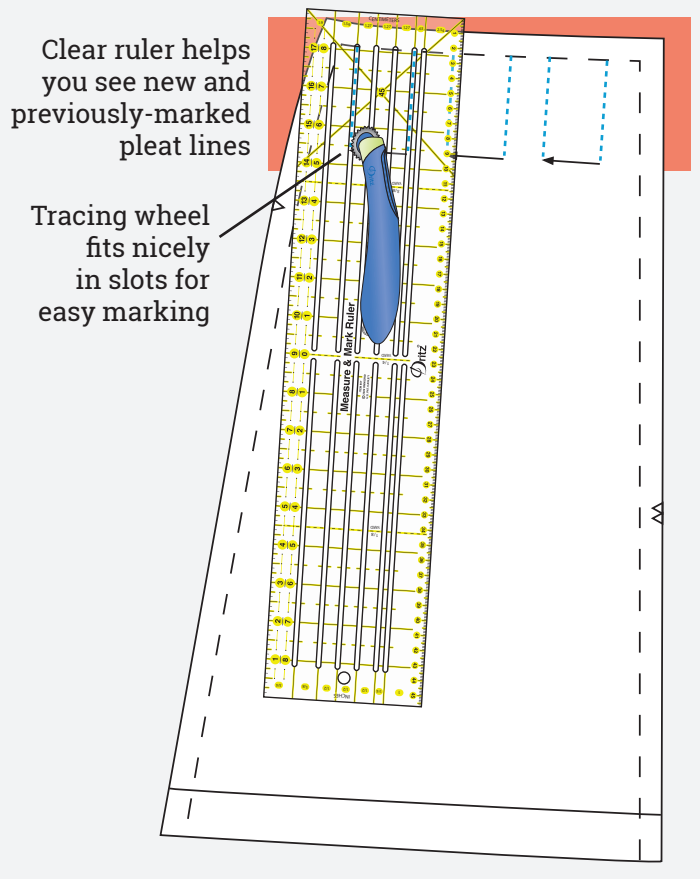
Measuring Grain Line:

Measure from selvage edge to marked pattern grain line to ensure that fabric grain is placed as pattern design intends. Keeping the fabric grain parallel to marked arrow on your pattern will ensure a garment that hangs evenly. Always measure from each end of printed arrow on pattern to selvage edge; pin pattern to secure before cutting.



Transferring Pattern Markings:

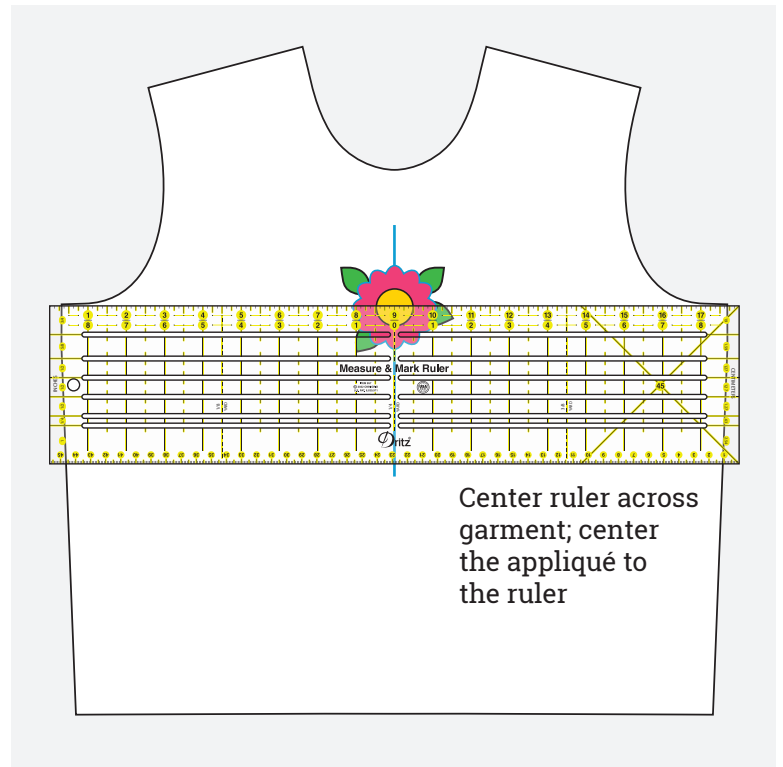
Pattern markings such as roll lines on lapels, or pleats need to be transferred to fabric for the most accurate sewing and pressing. Use slots to guide the tracing wheel when transferring pattern markings to your fabric.



TECHNIQUE TUTORIAL

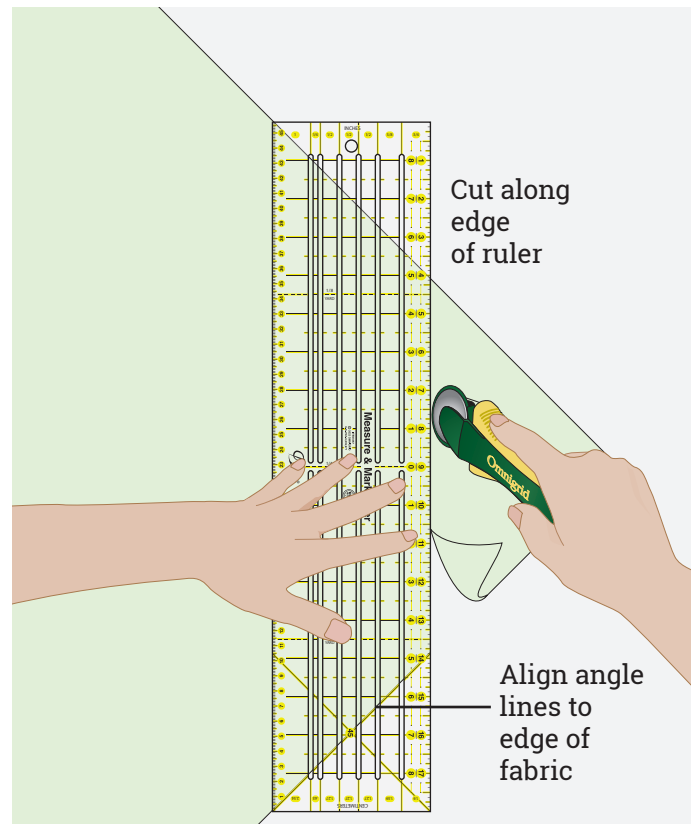
Centering:

The centering guide helps quickly align plackets or position appliqués and decorative trims.



Cutting 45° Angles:

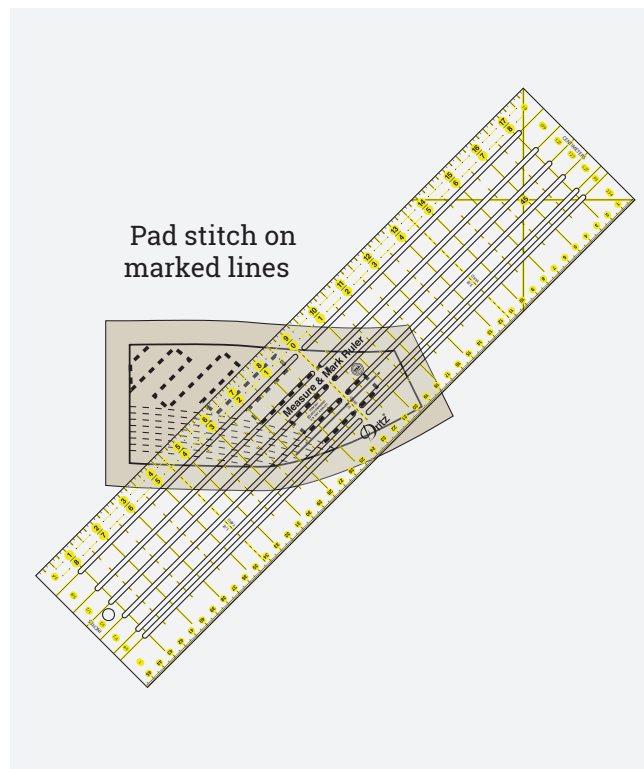
Bias strips must be cut at a 45° angle. To do this, place the 45° line on ruler along selvage edge or straight grain of the fabric. Use your rotary cutter to cut along edge of ruler. Continue to cut by placing marked slots along previously-cut edges; this will keep bias strips evenly sized.



TECHNIQUE TUTORIAL

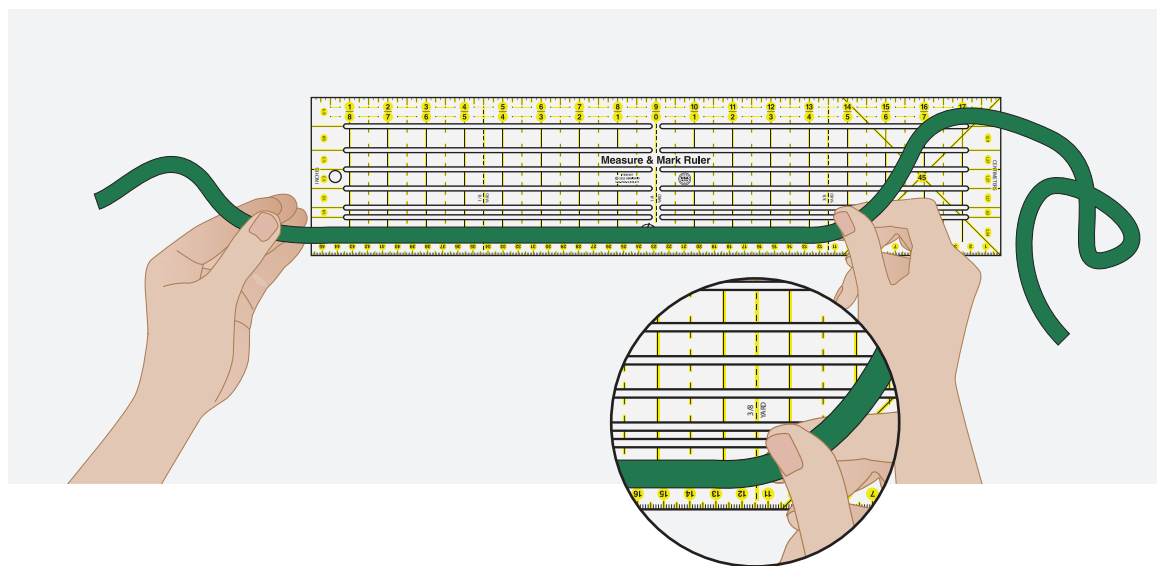
Marking for Pad Stitching:

Collars, lapels, and other fitted garments often use pad stitching to help stabilize, shape and prevent stretching. This stitching is most often placed parallel to the grain lines of the interfacing. Mark these parallel and perpendicular lines following the slots in the ruler. Follow marked lines for the best results.



Measuring Yardage:

Project instructions most often call for trims or elastic measured in yards. Use the convenient yardage markings on the ruler to quickly measure increments of 1/8-, 1/4-, 1/3- or 1/2-yard.

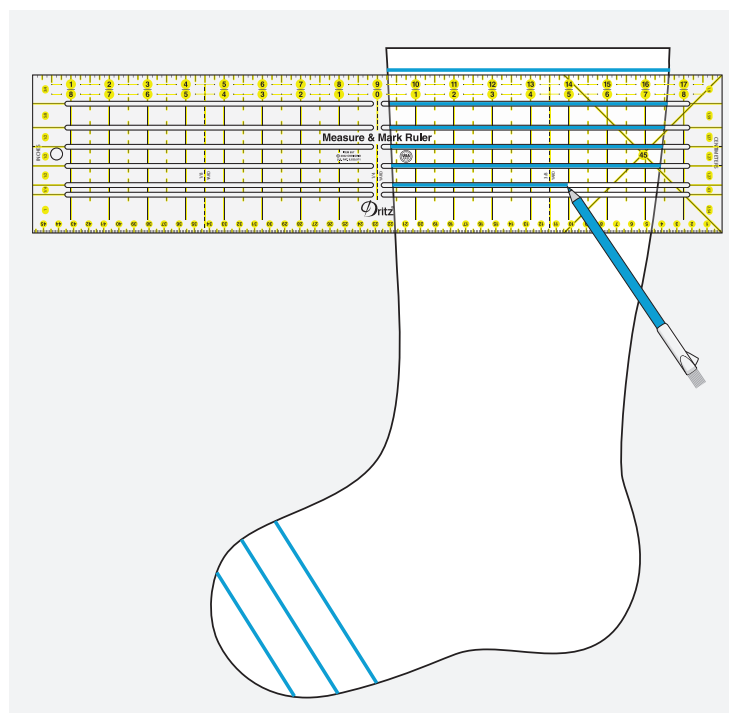


TECHNIQUE TUTORIAL

How to Use a Measure & Mark Ruler for Craft Projects:

Placing Decorative Trims and Stitching:

Use slots to mark parallel lines for decorative trims on projects such as stockings, placemats or table runners.



Cutting Paper:

Slots easily guide your craft knife when cutting paper strips or trimming the edges of other paper crafts.

