



 HABITAT COLLECTION



# HABITAT

## COLLECTION

ADHGC

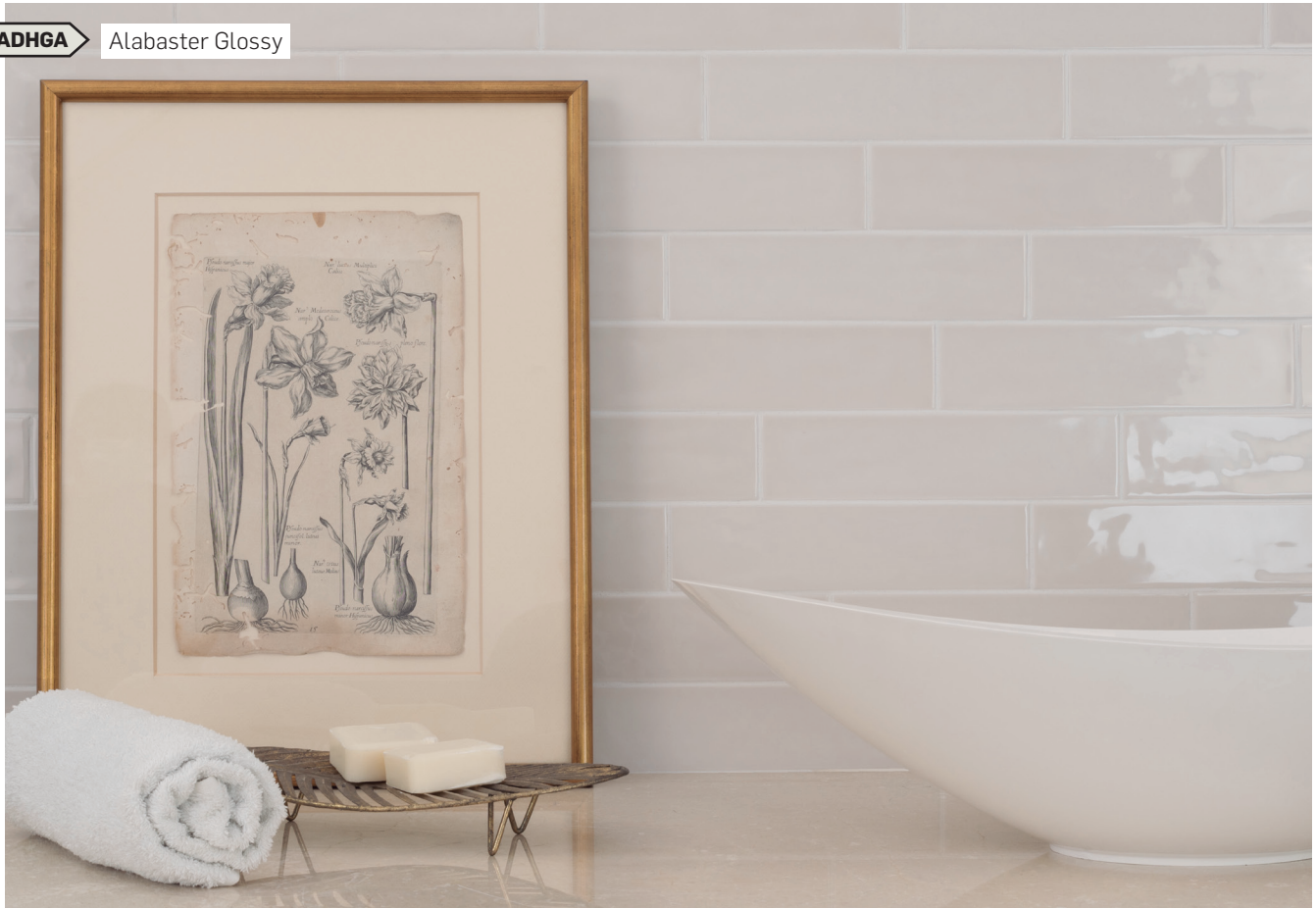
Cloud Glossy





**ADHGA**

Alabaster Glossy



**ADHGR**

River Blue Glossy



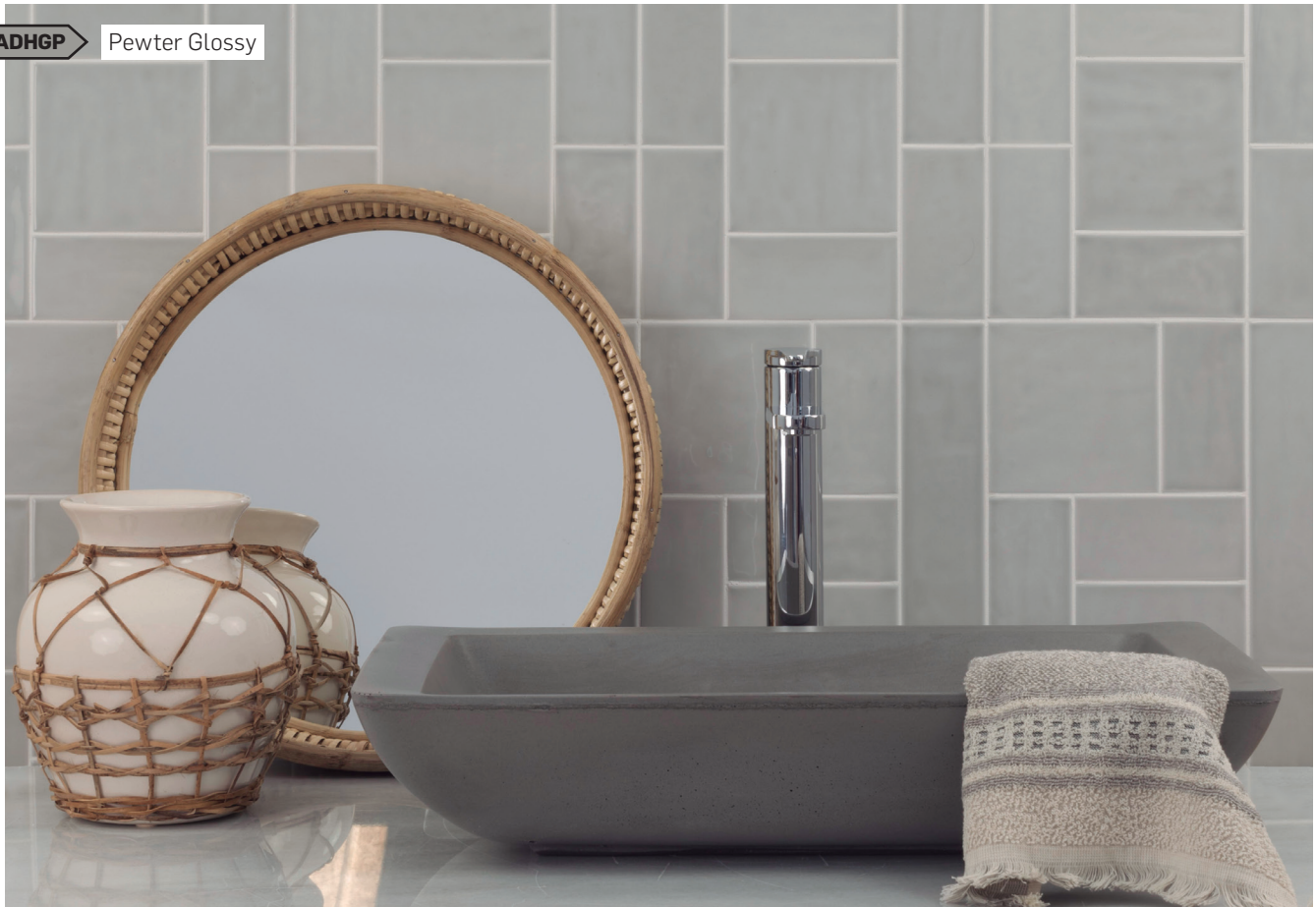
ADHGL

Leaf Glossy



ADHGP

Pewter Glossy





ADHGG

Graphite Glossy

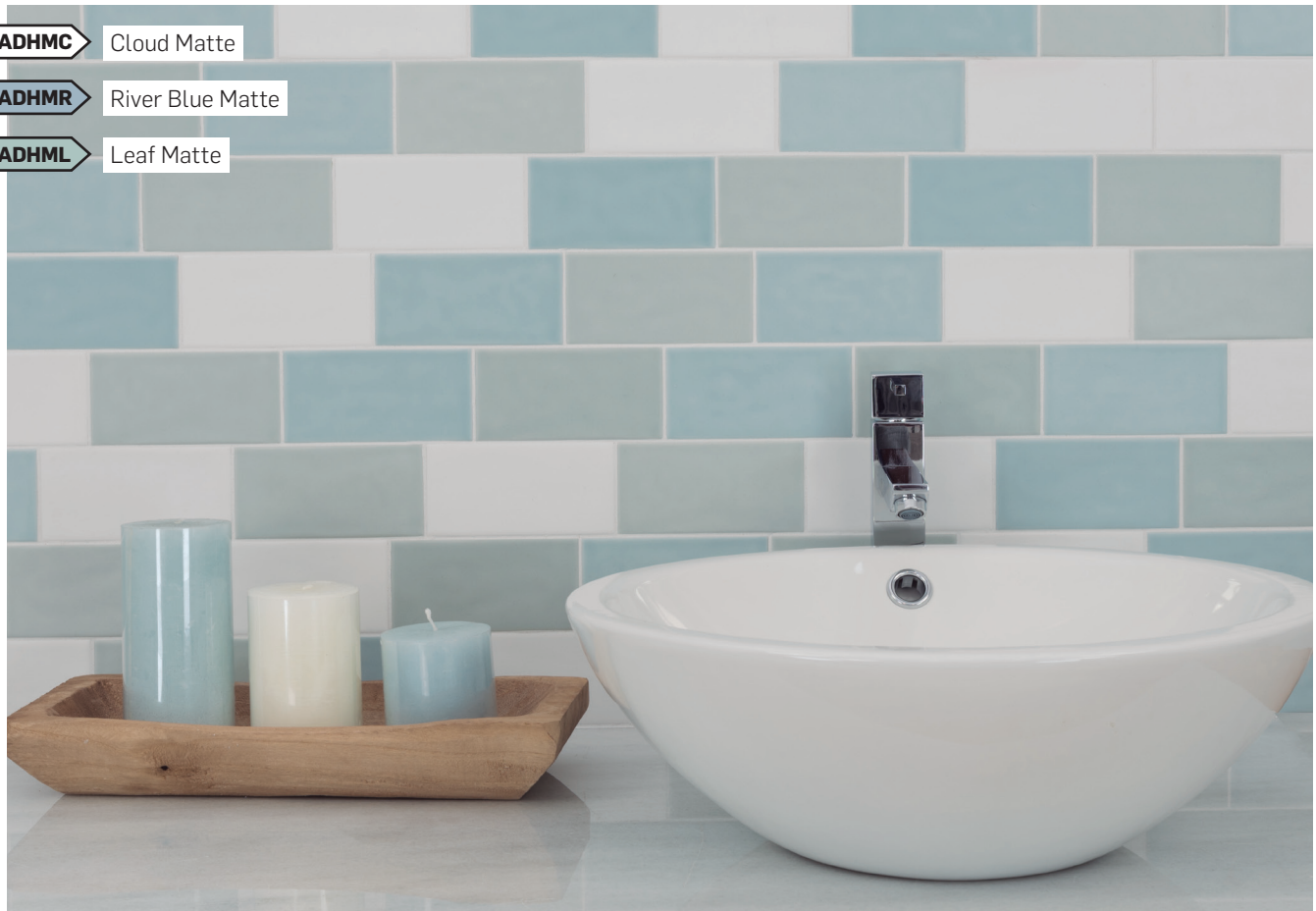




**ADHMC** Cloud Matte

**ADHMR** River Blue Matte

**ADHML** Leaf Matte



**ADHMG** Graphite Matte





ADHMR

River Blue Matte





ADHML

Leaf Matte



ADHMA

Alabaster Matte





ADHMP

Pewter Matte









DISCOVER ALL  
THAT COMES  
WITH HABITAT

# HABITAT Glossy & Matte Glaze

## GLOSSY AVAILABLE COLORS

Cloud **ADHGC** Alabaster **ADHGA** River Blue **ADHGR** Leaf **ADHGL** Pewter **ADHGP** Graphite **ADHGG**

Find out the product code simply by putting together the color and the item

Example: **ADHGC** **825**

## FIELD TILES

### UNDULATED



**825** 2.5"x5.1"



**821** 2.5"x10.3"



**844** 5.1"x5.1"

## TRIMS

### FINISHING EDGES



FE



FE Corner

**501** FE 0.55"x10.3"

**500** FE Corner

## DECORATIVE ACCESSORIES



**206** 0.6"x10.3" Liner (One Overglazed Edge)



**204** 1"x10.3" Quarter Round

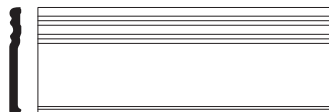


**205** Beak

## FINISHING TOUCHES



**201** 2"x10.3" Molding



**809** 4"x10.3" Base Board (Glazed Top Edge)

### END CAPS



**202**

### FRAME CORNERS



**203**



**810**

# HABITAT Glossy & Matte Glaze

## MATTE AVAILABLE COLORS

Cloud **ADHMC**    Alabaster **ADHMA**    River Blue **ADHMR**    Leaf **ADHML**    Pewter **ADHMP**    Graphite **ADHMG**

Find out the product code simply by putting together the color and the item

Example: **ADHMC** **825**

## FIELD TILES

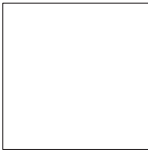
### UNDULATED



**825** 2.5"x5.1"



**821** 2.5"x10.3"



**844** 5.1"x5.1"

## TRIMS

### FINISHING EDGES



FE

**501** FE 0.55"x10.3"



FE Corner

**500** FE Corner

## DECORATIVE ACCESSORIES



**206** 0.6"x10.3" Liner (One Overglazed Edge)

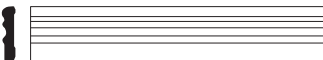


**204** 1"x10.3" Quarter Round

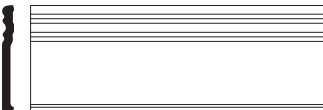


**205** Beak

## FINISHING TOUCHES



**201** 2"x10.3" Molding



**809** 4"x10.3" Base Board (Glazed Top Edge)

### END CAPS



**202**

### FRAME CORNERS



**203**



**810**

# TECHNICAL INFORMATION



FIELD TILES		
SIZE	SIZE SPECIFICATIONS	THICKNESS*
UNDULATED TILE		
2.5"x5.1"	2.520" x 5.118" (64mm x 130mm)	0.295" (7.5mm)
2.5"x10.3"	2.520" x 10.315" (64mm x 262mm)	0.303" (7.7mm)
5.1"x5.1"	5.118" x 5.118" (130mm x 130mm)	0.303" (7.7mm)
DECORATIVE ACCESORIES & FINISHING TOUCHES		
Liner (One Overglazed Edge) 0.6"x10.3"	0.630" x 10.315" (16mm x 262mm)	0.354" (9mm)
Quarter Round 1"x10.3"	1.024" x 10.315" (26mm x 262mm)	0.394" (10mm)
Molding 2"x10.3"	2.008" x 10.315" (51mm x 262mm)	0.591" (15mm)
Base Board (Glazed Top Edge) 4"x10.3"	3.976" x 10.315" (101mm x 262mm)	0.551" (14mm)
APPLICATIONS		
	SUITABLE RESIDENTIAL	SUITABLE COMMERCIAL
Bathroom walls	YES	YES
Shower walls	YES	YES
Kitchen walls	YES	YES
Countertops	YES	NO
Fireplace surrounds	YES	YES
Outdoor cooking/Bar Spaces	YES	YES
Pool Waterlines	NO	NO
Water Fountains	NO	NO
Floors	NO	NO
PERFORMANCE CHARACTERISTICS		
	TEST METHOD ATSM / ISO	RESULT
Water Absorption	C-373 / 10545-3	Pass
Breaking Strength	C-648 / 10545-4	Pass
Chemical Resistance	C-651 / 10545-14	Resistant
Facial Dimensions	C-499 / 10545-2	Pass
Range of Thickness	C-499 / 10545-2	Pass
Warpage	C-485 / 10545-2	Pass

\*Thickness is understood as the highest point of the tile.



INSTALLATION	
GROUT JOINT RECOMMENDATION	SHADE VARIATION
1/8"	V3 - Moderate Variation

CLEANING RECOMMENDATIONS
Routine with non-abrasive cleaners

CHARACTERISTICS	
GLAZE	Solid with subtle movement and high color variation
SURFACE SHEEN	Glossy and Matte
TEXTURE	Slightly Uindulated

ICON LEGEND

							
Wall	Showers	Shower Floor	Residential Floor	Indoor	Pool Waterlines Water Fountains	Outdoor Cooking Bar Spaces	Fireplace Surrounds

Due to the nature of our tile, a certain amount of variation in color, shading, surface and texture are to be expected.

This collection is characterized by its shade variation. Some colors in the series have more variation than others. Expect shade variation between the individual field tiles and between field and trim within each color. Due to the shape of the pieces and the nature of production, this is especially true for variation between field and trims. Trim pieces like quarter rounds, finishing edges and other moldings may have more glaze pooling and different pooling effects than other pieces. Expect variation within each run, and from production to production. IT IS IMPORTANT TO BLEND TILE WITHIN EACH CARTON AND FROM MULTIPLE CARTONS DURING INSTALLATION. This is best achieved by laying out the material prior to installation.



#### CONTACT US

**Corporate Headquarters  
South East Distribution Center**

9450 N.W. 12th St.  
Miami, FL 33172  
Office: 305-513-4633  
Fax: 305-513-4634  
[customerservice@adexusa.com](mailto:customerservice@adexusa.com)

**West Coast Distribution Center**

2344 E. Walnut Ave.  
Fullerton, CA 92831  
Office: 714-773-0197  
Fax: 714-773-9352  
[customerservicewest@adexusa.com](mailto:customerservicewest@adexusa.com)

**North East Distribution Center**

1000 Wall St. W.  
Lyndhurst, NJ 07071  
Office: 201-355-8772  
Fax: 201-636-2802  
[customerservicene@adexusa.com](mailto:customerservicene@adexusa.com)





Our company has an environmental management system  
in place according to the Norm ISO 14001 certified by  
European Quality Assurance (EQA)