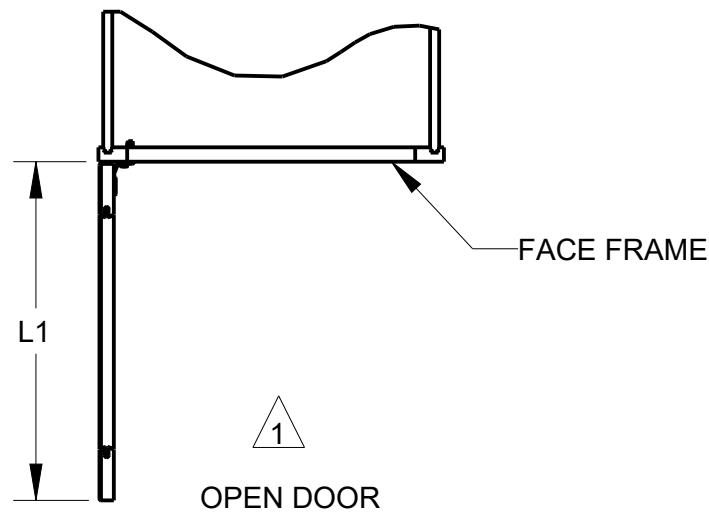
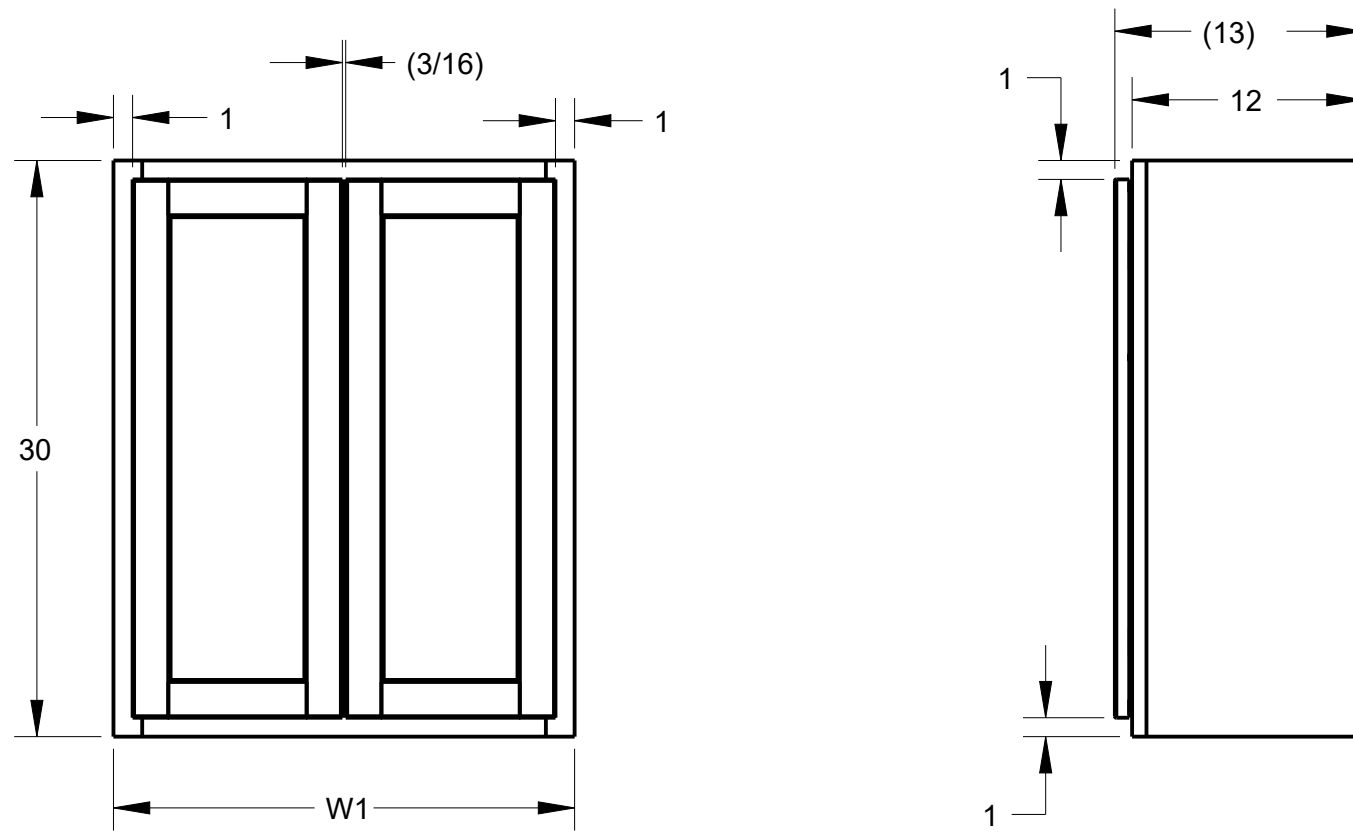


NOTES:

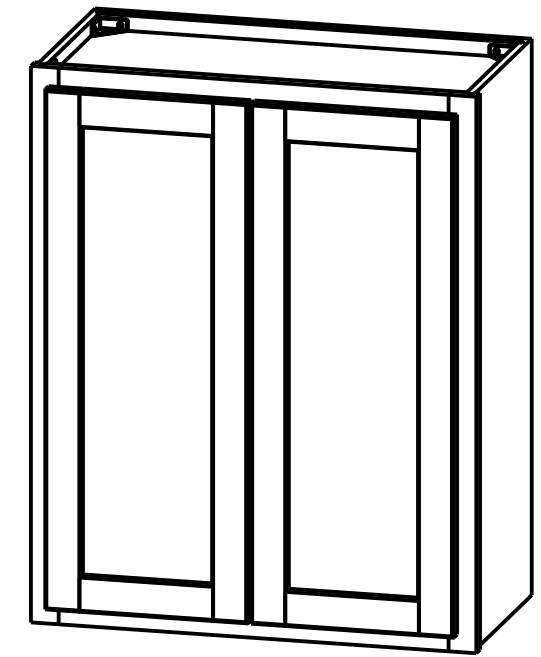
1 OPEN DOOR VIEW INCLUDES HINGE SPACE OFFSET.



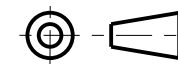
PRODUCT SHOWN W2430

DOCUMENT STATUS Released

PRODUCT	W1	L1	DOOR SIZE
			ROUNDED TO THE NEAREST 1/32
W2430	24"	11 1/16"	10 15/16" X 28 1/32"
W2730	27"	12 9/16"	12 7/16" X 28 1/32"
W3030	30"	14 1/16"	13 29/32" X 28 1/32"
W3330	33"	15 9/16"	15 13/32" X 28 1/32"
W3630	36"	17 1/16"	16 29/32" X 28 1/32"



THIRD ANGLE PROJECTION



MATERIAL

N/A

FINISH

N/A

DRAWN BY
ANDY BROWN

DESIGNED BY
NORTHPOINT

APPROVED BY
E.GOLESTANYAN

DATE
25FEB2021

DATE

DATE
11MAR2021

hardware resources

DESCRIPTION

W2430, W2730, W3030, W3330, W3630
HALF OVERLAY

DRAWING NUMBER
W2430-W2730W3030W3330W3630_HALF

REV
A

SIZE
A3

SCALE
0.100

SHEET
1 / 1

HARDWARE RESOURCES RESERVES THE RIGHT TO CHANGE SPECIFICATIONS WITHOUT NOTICE.
IN CASE OF A DISCREPANCY, ACTUAL PART GEOMETRY SUPERSEDES THIS DOCUMENT.

THE INFORMATION CONTAINED WITHIN THIS DRAWING IS THE SOLE PROPERTY OF HARDWARE RESOURCES INC. ANY REPRODUCTION IN PART OR WHOLE WITHOUT WRITTEN PERMISSION OF HARDWARE RESOURCES INC. IS PROHIBITED.