

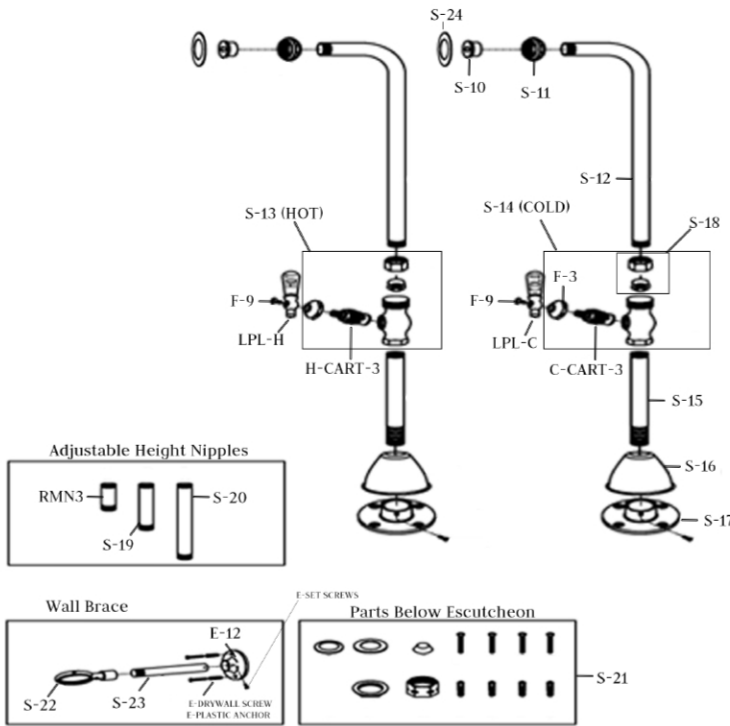


# MAIDSTONE

www.MaidstoneSupply.com

## Freestanding English Telephone Faucet - Gooseneck Spout

Part No: 121-GSF5

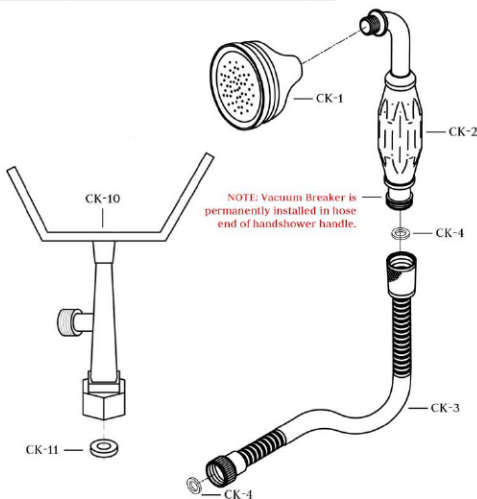


Unpack and check all the parts, and read the instructions.

| ITEM             | DESCRIPTION                | QTY |
|------------------|----------------------------|-----|
| C-CART-3         | COLD STEM                  | 1   |
| H-CART-3         | HOT STEM                   | 1   |
| E-12             | FLANGE                     | 2   |
| E-DRYWALL SCREW  | DRYWALL SCREW              | 4   |
| E-PLASTIC ANCHOR | PLASTIC ANCHOR             | 4   |
| E-SET SCREWS     | SCREW (FINISHED)           | 2   |
| F-3              | BELL NUT                   | 2   |
| F-9              | SCREW                      | 2   |
| LPL-C            | COLD HANDLE                | 1   |
| LPL-H            | HOT HANDLE                 | 1   |
| RMN3             | 3" NIPPLE                  | 2   |
| S-10             | THREADED CONNECTOR         | 2   |
| S-11             | NUT                        | 2   |
| S-12             | SHORT THROW TUBE           | 2   |
| S-15             | 7.5" NIPPLE                | 2   |
| S-16             | ESCUTCHEON                 | 2   |
| S-17             | FLANGE                     | 2   |
| S-18             | NUT WITH FLANGE            | 2   |
| S-19             | 6" NIPPLE                  | 2   |
| S-20             | 9" NIPPLE                  | 2   |
| S-21             | HARDWARE BAG               | 1   |
| S-22             | LOOP INCLUDES E-SET SCREWS | 2   |
| S-23             | 12" TUBE                   | 2   |
| S-24             | WASHER                     | 2   |

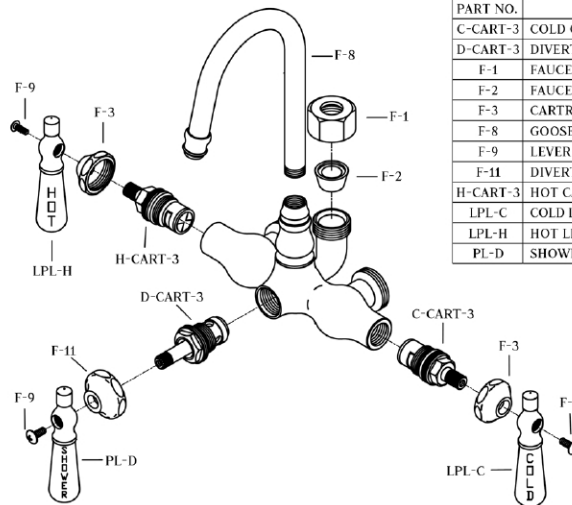
Unpack and check all the parts, and read the instructions.

| PART NO. | DESCRIPTION              | QTY |
|----------|--------------------------|-----|
| CK-1     | HANDSHOWER HEAD          | 1   |
| CK-2     | HANDSHOWER HANDLE        | 1   |
| CK-3     | HANDSHOWER HOSE          | 1   |
| CK-4     | HANDSHOWER HOSE WASHERS  | 2   |
| CK-10    | HANDSHOWER FAUCET CRADLE | 1   |
| CK-11    | HANDSHOWER CRADLE WASHER | 1   |

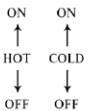


Unpack and check all the parts, and read the instructions.

| PART NO. | DESCRIPTION              | QTY |
|----------|--------------------------|-----|
| C-CART-3 | COLD CARTRIDGE (BLUE)    | 1   |
| D-CART-3 | DIVERTER CARTRIDGE       | 1   |
| F-1      | FAUCET RISER NUT         | 1   |
| F-2      | FAUCET RISER CONE WASHER | 1   |
| F-3      | CARTRIDGE BELL COVERS    | 2   |
| F-8      | GOOSENECK SPOUT*         | 1   |
| F-9      | LEVER HANDLE SCREW       | 3   |
| F-11     | DIVERTER BELL FLANGE     | 1   |
| H-CART-3 | HOT CARTRIDGE (RED)      | 1   |
| LPL-C    | COLD LEVER HANDLE (LG)   | 1   |
| LPL-H    | HOT LEVER HANDLE (LG)    | 1   |
| PL-D     | SHOWER LEVER HANDLE (LG) | 1   |



\*Spout is packed in the bottom of the styrofoam insert in box.



Contact Maidstone for additional information and specifications. For complete warranty information and a list of dealers visit [www.MaidstoneSupply.com](http://www.MaidstoneSupply.com). All products and specifications are subject to change without notice. Maidstone is not responsible for typographical and/or dimensional errors. Typographical errors are subject to correction.

Note: Rough-in dimensions may vary +/- 1/2" and are subject to change. No responsibility is assumed by Maidstone.