
Classic Grooves

Porcelain Stone®



Classic Grooves

Porcelain Stone®

Feel the visual rhythm of Classic Grooves from Crossville.

Graphic movement is enhanced with subtle striations and tone-on-tone optics. The swirling surface glints and glows with a soft, sophisticated sheen. The end result is a series of graphically-enhanced warm and cool neutral tiles complemented by an array of decorative accents. Sustainably made in the USA*, Classic Grooves is at once timeless as it is contemporary.

Classic Grooves comes in two unpolished field tile sizes: 12"x24" and 24"x24". Mosaic options emulate palm designs, with two linear accents featuring metallic glazes, a sheet mosaic of individually cut palm shapes, and a traditional 2x2 mosaic. All tile is rectified for a clean, crisp installation that's smooth to the touch yet provides the slip resistance a commercial space requires.

Perfect for your playlist, this Classic Grooves will never lose its beat.

- Color-coordinating collection for versatility
- Cross-Sheen® for easy cleaning
- Field tile – rectified
- A wide variety of accents and mosaics
- Recommended grout joint: 3mm

**field tile manufactured in Crossville, TN.*



CGR01 ▶ Forty-Five 24 x 24



Shower Floor: **CGR02** ▶ B-Side 2 x 2 Mosaic
Vanity: **PC001** ▶ Baltic UP Crossville Porcelain Slabs
Wall: **CGR02** ▶ B-Side 12 x 24
Deco: **CGRAC** ▶ Cover Art Cool 3 x 12
Floor: **CGR02** ▶ B-Side 12 x 24

Color Palette

Available Colors



CGR01 ▶ Forty-Five UPS



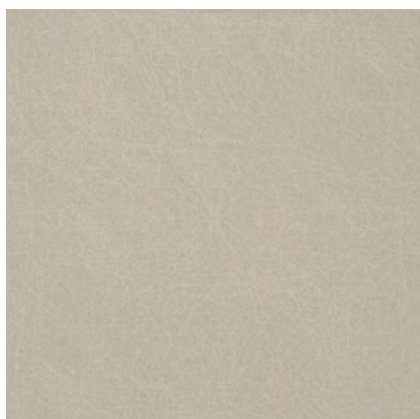
CGR02 ▶ B-Side UPS



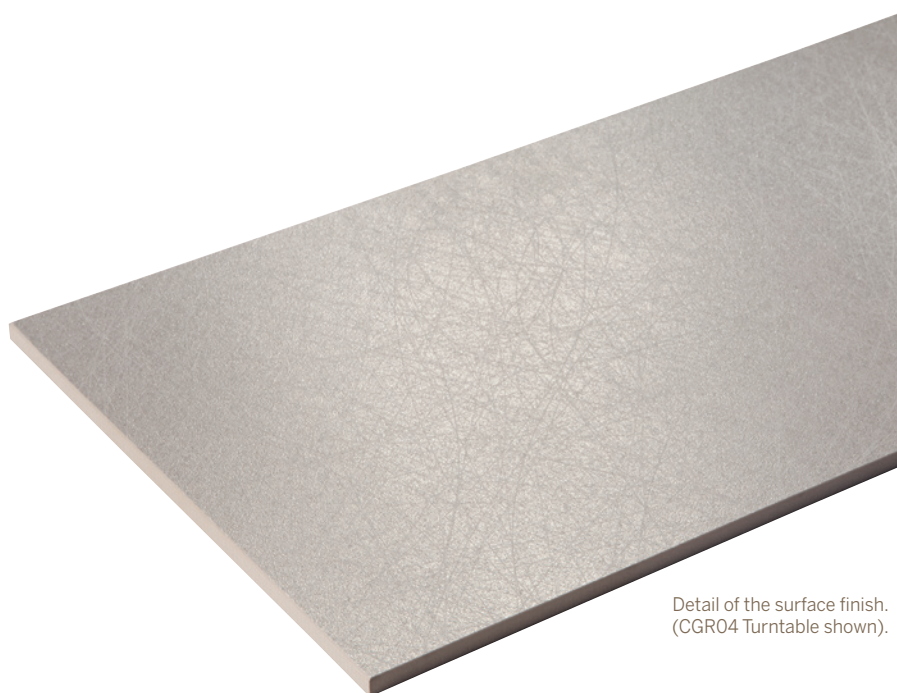
CGR03 ▶ Liner Notes UPS



CGR04 ▶ Turntable UPS



CGR05 ▶ Sleeve UPS



Detail of the surface finish.
(CGR04 Turntable shown).

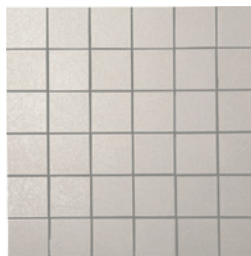
Available Mosaics



CGR01 ▶ Forty-Five UPS
2 x 2 Square Mosaic



CGR01 ▶ Forty-Five UPS
Palm Mosaic



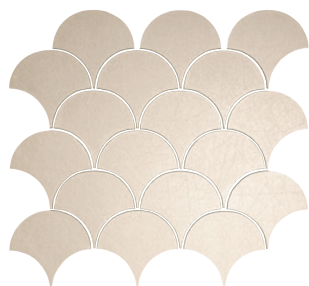
CGR02 ▶ B-Side UPS
2 x 2 Square Mosaic



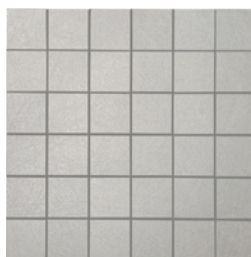
CGR02 ▶ B-Side UPS
Palm Mosaic



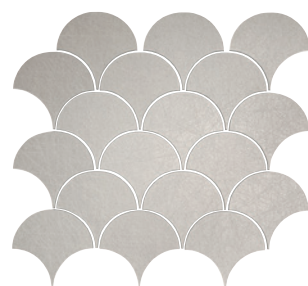
CGR03 ▶ Liner Notes UPS
2 x 2 Square Mosaic



CGR03 ▶ Liner Notes UPS
Palm Mosaic



CGR04 ▶ Turntable UPS
2 x 2 Square Mosaic



CGR04 ▶ Turntable UPS
Palm Mosaic



CGR05 ▶ Sleeve UPS
2 x 2 Square Mosaic



CGR05 ▶ Sleeve UPS
Palm Mosaic

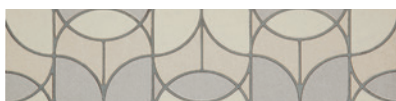
Deco Trim



CGRAC.10312UP ▶
Cover Art Cool 3 x 12 UP



CGRAW.10312UP ▶
Cover Art Warm 3 x 12 UP



CGRQC.10312UP ▶
Quadraphonic Cool 3 x 12 UP



CGRQW.10312UP ▶
Quadraphonic Warm 3 x 12 UP



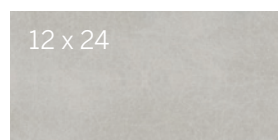
Detail of Cover Art
Warm 3 x 12 Deco

Specifications

Sizes Shown in CGR04 Turntable



24 x 24



12 x 24

COVER ART*



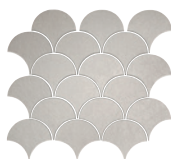
3 x 12 Deco Trim UP

* Available in both Warm and Cool colors

QUADRAPHONIC*



2 x 2
Square
Mosaic UPS



Palm
Mosaic UPS†

† Due to this mosaic's design, caution should be used when installing on surfaces that might contact bare skin or other delicate materials. To prevent possible injury or damage from sharp corners that might be exposed above the grout line, install per ANSI 108 guidelines in order to minimize or prevent lippage.

Get Planked!

Our Porcelain Stone® products are available in popular plank shapes with no minimum order and quick fulfillment.

See website for more details and sizes.



Sizes & Finishes

Field Tile - Rectified

Available in all colors

Nominal (in)	Actual (mm)	Thickness (mm)	Grout Joint (mm)	Finish
12 x 24	297 x 597	9.5	3	UPS
24 x 24	597 x 597	9.5	3	UPS

Note: All field tile is rectified with a 3mm grout joint.

Mosaic

Available in all colors

Nominal (in)	Sheet (mm)	Thickness (mm)	Grout Joint (mm)	Finish
2 x 2 Square Mosaics*	298 x 298	9.5	3	UPS
Palm Mosaic**†	370 x 345	9.5	2	UPS

* Mounted on 12 x 12 sheet with 3mm grout joints

** Mounted on 15 x 14 sheet with 2mm grout joints

† Due to this mosaic's design, caution should be used when installing on surfaces that might contact bare skin or other delicate materials. To prevent possible injury or damage from sharp corners that might be exposed above the grout line, install per ANSI 108 guidelines in order to minimize or prevent lippage.

Coordinating Trim

Nominal (in)	Actual (mm)	Thickness (mm)	Grout Joint (mm)	Finish
3 x 12 Deco Trim	72 x 297	9.5	2	UP
4 x 24 Single Bullnose	96 x 597	9.5	3	UPS
6 x 12 Cove Base	150 x 297	9.5	3	UPS



4 x 24 Single Bullnose



6 x 12 Cove Base

Product Performance

Breaking Strength	≥450 lbf	ASTM C648
Bond Strength	>200 psi	ASTM C482
Chemical Resistance	Unaffected	ASTM C650
Frost Resistance	Resistant	ASTM C1026
Water Absorption	<0.50%	ASTM C373
Scratch Hardness	7	Mohs Scale

Wet Dynamic Coefficient of Friction Range

UPS	0.42 - 0.52	ANSI A326.3
-----	-------------	-------------

Shade & Texture Index

Classic Grooves has a shade variation of V2.

V1	V2	V3	V4	V1 Uniform appearance
				V2 Slight Variation
				V3 Moderate Variation
				V4 Substantial Variation

This porcelain tile product is produced with a V2 variation. Expect that the amount of color and texture on each piece may vary slightly. Inspect the product upon delivery and for best results, blend tile from several cartons during installation.

Recommended Use

Classic Grooves is recommended for interior floors, walls, countertops, and exterior walls in both residential and commercial applications. Classic Grooves is not recommended for exterior horizontal surfaces or exterior paving. **If offset pattern is required for tiles 15 inches or longer, Crossville® recommended an offset of not greater than 33%.** See CrossvilleInc.com for detailed installation instructions.

Wet area use for Classic Grooves Mosaics

Crossville® produces the Classic Grooves 2 x 2 and Palm mosaics with the Cross-Sheen® (UPS) finish. The ANSI A326.3 wet Dynamic COF of Classic Grooves is ≥ 0.42 . Their small sizes ensure frequent grout joints which provides traction and drainage. Crossville cannot control situations involving incorrect installation, improper slope to the drain for elimination of standing water and poor surface cleaning. This information is provided so that customers may make a realistic and informed decision when comparing Classic Grooves to other tile products in wet area environments, such as residential/commercial bathrooms, showers, and interior pool decks.



Floor: **CGR04** ▶ Turntable 24 x 24
Bar Front: **CGR04** ▶ Turntable Palm Mosaic
Countertop - **PC010** Night Watch Crossville Porcelain Slabs

Care and Maintenance

Regular cleaning is the best way to keep Classic Grooves tile looking good for years to come. Use clean, hot water (combined with a household cleaner for more aggressive cleaning). Rinse thoroughly and dry with a soft cloth. No waxes are needed. More information regarding the care and maintenance of Crossville® products is available at CrossvilleInc.com.

Our Warranty

Crossville Inc. guarantees that its products will meet or exceed the performance specifications outlined in ANSI A137.1- 2012 and in the performance data section of the Crossville, Inc. general product catalog. For complete details check our website at CrossvilleInc.com.

HydroTect™

Our porcelain tiles are available with Hydrotect™. Crossville's revolutionary invisible coating harnesses the power of light, water, and oxygen to create the best defense against dirt and pollution. Whether indoors or out, floors and walls stay cleaner, providing a superior experience in any space. For complete details check our website at CrossvilleInc.com.



▶▶ Crossville® Sample Express

Visit the website to learn more:
CrossvilleInc.com/Products/Classic-Grooves

Loose Samples for Architects & Designers

Loose Tile Samples

Sizes may vary depending on product series
Max. of 4 large field tile per order

Standard Shipping

FedEx Ground

CrossvilleInc.com

If you want a better idea of what Crossville tile would look like in a particular room setting, simply visit our website and click on Cross-Vision. This powerful software tool allows you to visualize different types of Crossville tile. In addition, you'll find comprehensive information about Crossville's entire portfolio of products. You can also learn about the latest styles and trends from industry experts, download detailed care and maintenance instructions for our various products, or browse electronic versions of Crossville's product brochures. So whether you need information about Crossville products or tile in general, please visit us at CrossvilleInc.com. Information listed here is subject to change.

Information listed here is subject to change. Please refer to CrossvilleInc.com for the latest, most accurate information.

Trade Organizations



Environmentally Aware



Classic Grooves

Crossville, Inc.

PO Box 1168
Crossville, TN
38557

Phone 931.484.2110
Fax 931.456.2956
E-Mail Crossc@CrossvilleInc.com
Web CrossvilleInc.com



Floor: **CGR05** ▶ Sleeve 12 x 24
Counter: **PC006** Suspense Crossville Porcelain Slab
Backsplash: **CGRQW** ▶ Quadraphonic Warm 3 x 12 Deco

Shown on cover
Floor: **CGR03** ▶ Liner Notes 24 x 24

