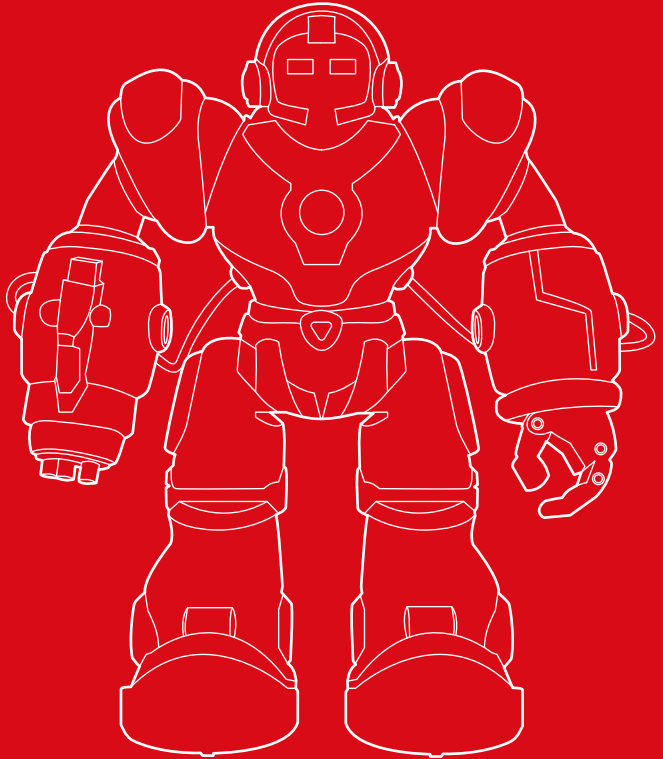




bestchoiceproducts



INSTRUCTION MANUAL

Intelligent RC Action Robot



bestchoiceproducts

Thank you for choosing us! Since 2002, Best Choice Products has been bringing customers high-quality products at the absolute lowest price. With everything ranging from instruments and toys to furniture and outdoor, we've got your everyday living essentials covered. We're centered around a customer-first philosophy - with free shipping, exceptional customer service, and a catalog sourced with you in mind.

! NOTICE

Please retain these instructions for future reference.

- This product is not suitable for children under 5 years old.
- Products with small parts may be swallowed by mistake and cause a choking hazard.
- When this product is damaged, stop using and playing it to avoid causing harm.
- These instructions contain important information and should be preserved. All packaging materials, such as tape, plastic sheets, packing locks and tags are not part of this toy and should be discarded for your child's safety.
- Toy should be used under adult supervision.
- Avoid exposure to direct sunlight and excessive heat.
- If any parts are missing, broken, damaged, or worn, stop using this item until repairs are made and/or factory replacement parts are installed.
- Do not use this item in a way inconsistent with the manufacturer's instructions as this could void the product warranty.

TOOLS REQUIRED

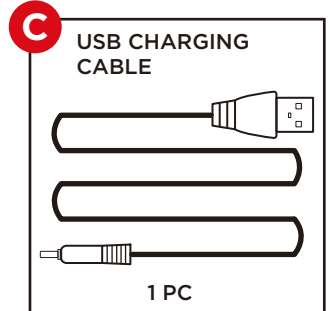
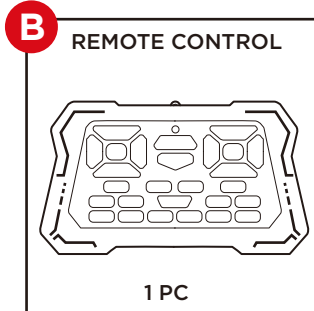
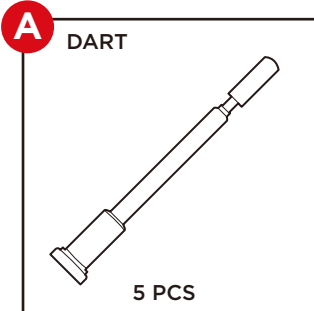


PHILLIPS
SCREWDRIVER

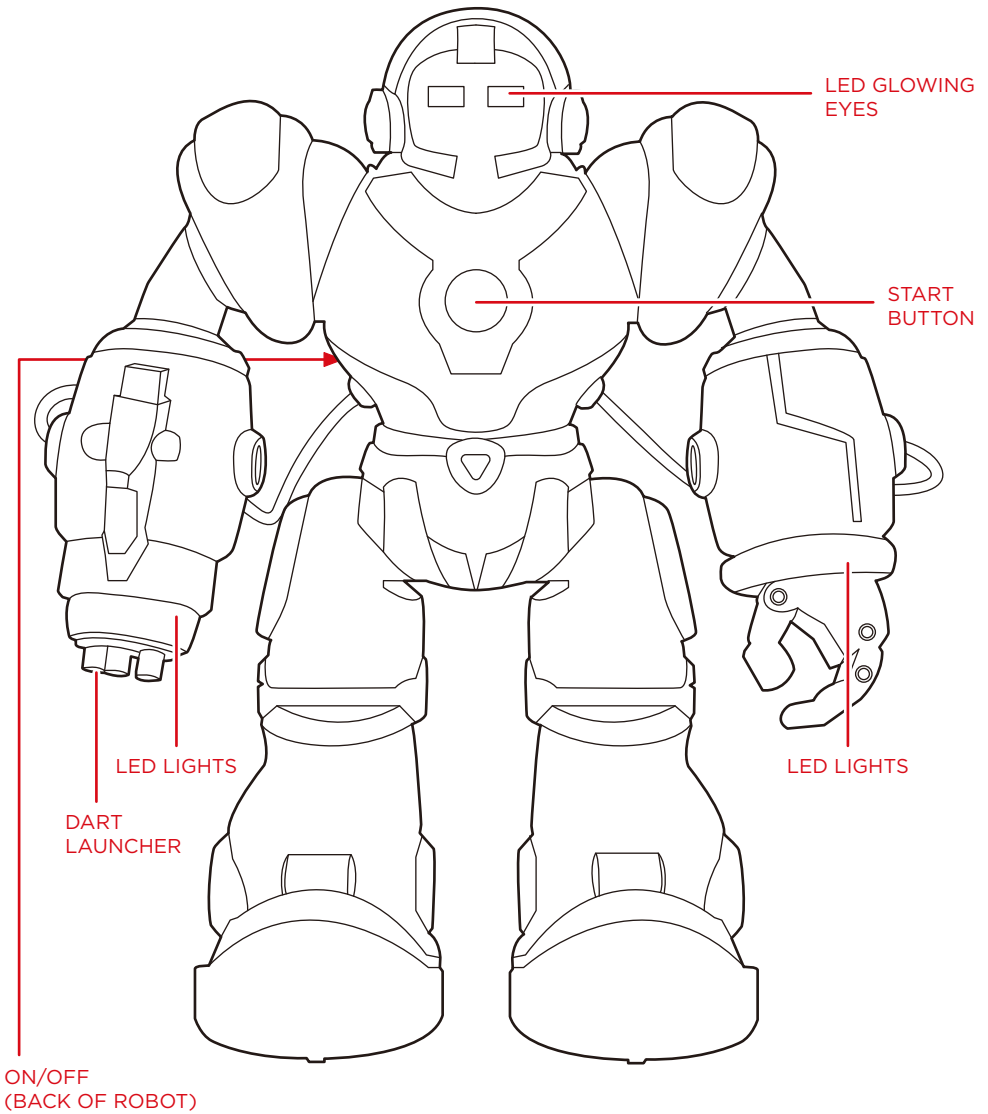


3 AAA BATTERIES

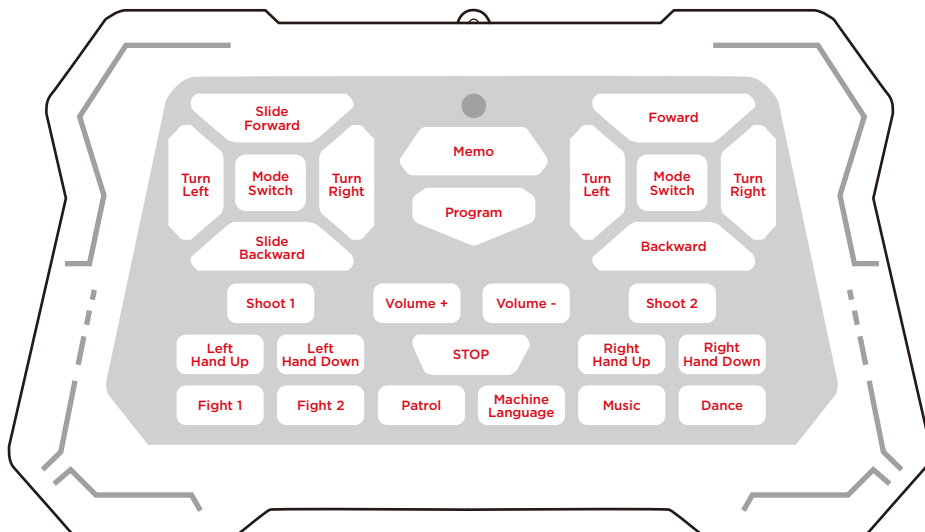
PARTS



ROBOT DIAGRAM



REMOTE CONTROL DIAGRAM



OPERATING INSTRUCTIONS:

NOTE: After 20 seconds of non-use, the robot will go in standby mode. After 3 minutes of non-use, the robot will go into sleep mode. Press the start button on the robot's chest to wake it from sleep mode.

Forward/Backward: The robot walks forward/backward with accompanying sound effects.

Left/Right: The robot walks into a left/right turn with accompanying sound effects.

Mode Switch (Walking): Press to switch to a faster walking mode.

Slide forward/backward: The robot slides forward/backward with accompanying sound effects.

Slide left/right: The robot slides into a left/right turn with accompanying sound effects.

Mode Switch (Sliding): Press to switch to a faster sliding mode.

Shoot 1: Shoot darts with accompanying sounds and lights.

Shoot 2: Shoot darts with laser cannon sound effects and lights.

Left arm up/down: Raise and lower the left arm.

Right arm up/down: Raise and lower the right arm.

Memo (Demo): Press to start a demonstration of the robot's sounds, lights, and actions.

Program: Press to program up to 50 actions for the robot to perform. Press again to play the programmed actions.

Volume + / Volume - : Increase/decrease the sound volume.

Stop: Press to stop all functions and enter standby mode.

Fight 1: Press to have the robot perform a battlefield combat scene with accompanying actions and sound effects.

Fight 2: Press to have the robot perform an alternate battlefield combat scene with accompanying actions and sound effects.

Patrol: Press to have the robot enter patrol mode with accompanying actions and scanning sound effects.

Machine Language: Press to have the robot perform a series of robot sound effects and noises with accompanying movements.

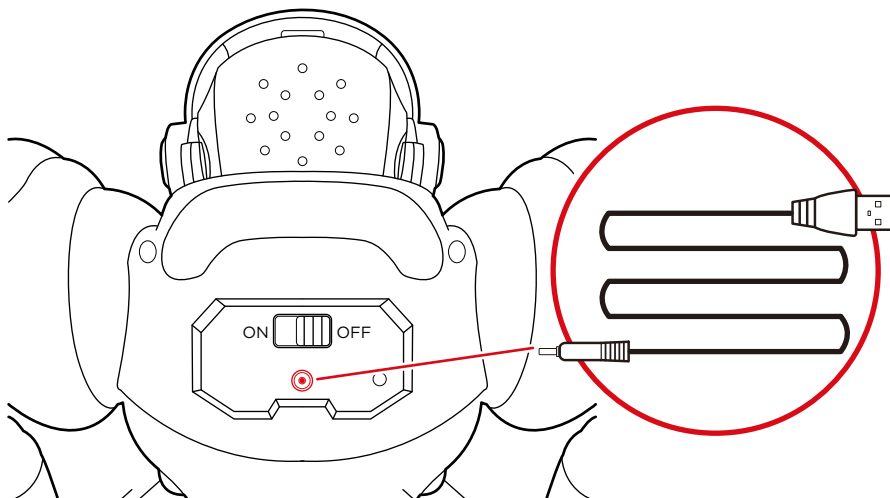
Music: Play MIDI music with accompanying arm and leg movements.

Dance: Press to have the robot perform a series of dance moves.

REMOTE CONTROL BATTERY INSTALLATION

- Use a screwdriver to remove the battery cover on the back of the remote.
- Insert 2 AAA batteries. Make sure they are inserted with the correct polarity.
- Replace the battery cover and secure it with a screw.

CHARGING THE ROBOT



- Insert one end of the USB charging cable into the back of the robot. Insert the other end into a USB adaptor or computer to begin charging.
- Normal charge time is 2 to 3 hours. If it is your first time using this robot, charge the battery for 3 to 4 hours.

Note: The battery may get warm while charging.

CLEANING AND STORAGE

- Always switch the robot off after use.
- If unused for a long period of time, remove the batteries.
- Do not use abrasive chemicals to clean the robot or remote control.

BATTERY WARNINGS

- Do not mix alkaline, standard (carbon zinc) and rechargeable (nickel hydride) batteries.
- Do not mix old and new batteries.
- Non-rechargeable batteries should not be charged.
- Rechargeable batteries should be charged under adult supervision only.
- Exhausted batteries should be removed.
- The supply terminals should not be short-circuited.
- Do not put batteries next to or in a heat source (fire, electronic heating device, etc.).
- Do not hit batteries against hard objects.
- Do not submerge batteries in water.
- Batteries should be inserted with the correct polarity.

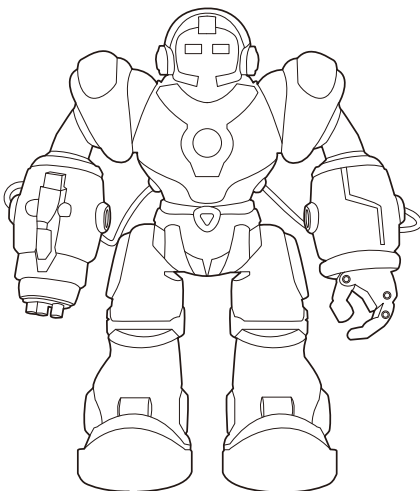


bestchoiceproducts

Check out more great products:
[bestchoiceproducts.com](https://www.bestchoiceproducts.com)

ASSEMBLY IS COMPLETE!

bcp



PRODUCT WARRANTY INFORMATION

All items can be returned for any reason within 60 days of the receipt and will receive a full refund as long as the item is returned in its original product packaging and all accessories from its original shipment are included. All returned items will receive a full refund back to the original payment method. All returned items will not be charged a re-stocking fee.

All returned items require an RA (Return Authorization) number, which can only be provided by a Best Choice Products Customer Service Representative when the return request is submitted. Items received without an RA may not be accepted or may increase your return processing time. Once an item has been received by Best Choice Products, refunds or replacements will be processed within 5 business days.

All returns must be shipped back to the Best Choice Products Return Center at the customer's expense. If the reason for return is a result of an error by Best Choice Products then Best Choice Products will provide a pre-paid shipping label via email. Boxes for return shipping will not be provided by Best Choice Products, and is the customer's responsibility to either use the original shipping boxes or purchase new boxes.

Pictures may be required for some returns to ensure an item is not damaged prior to its return. Items returned are not considered undamaged until they are received by Best Choice Products and verified as such. All damages to items are the customer's responsibility until the item has been received by and acknowledge by Best Choice Products as undamaged.

CONTACT US; WE'RE HERE 7 DAYS A WEEK TO HELP YOU!



bestchoiceproducts.com



customerservice@bestchoiceproducts.com



844.948.8400



[LEARN MORE!](#)

⚠️ WARNING

Manufacturer and seller expressly disclaim any and all liability for personal injury, property damage or loss, whether direct, indirect, or incidental, resulting from the incorrect attachment, improper use, inadequate maintenance, or neglect of this product.