

Picture(s) of Drum



**Specific Manufacturing**

<b>Line:</b> Raw Materials	
<b>Resin</b> L99 / 80100001 HDPE Resin	<b>Color# (wt%)</b> L93 / 80200005 (.4%)
<b>Specific Resin(s)</b> PCP99-4 / 80150006 PCR Resin - #9 ONLY	<b>Color Description</b> WHITE
<b>Embossments</b>	
<b>Regulatory</b> 1. <b>MACHINE #5 OR #6</b> 1H1/Y1.9/100/**/USA/M4235 2.2MM  2. <b>MACHINE #5 OR #6</b> 1H1/Y1.9/150/**/USA/M4235 2.2MM  1H1/Y1.4/100/**/USA/M4235 2.2MM WITH VENTED CLOSURE ** Last two digits of current year	<b>Custom</b> <b>DRUMS MADE ON LINE 9:</b>  1H1W/Y1.9/100/** USA/M4235 2.2mm  1H1W/Y1.4/100/** USA/M4235 2.2mm WITH VENTED CLOSURE  ** Last two digits of current year
<b>Specific Comments</b>	
Weight Target: 20.80 Height: 34.50-35.00 Diameter: 23.14-23.39	

**Bung Opening 1 = 2" NPT**



L16-WL / 81630002: 2" Natural Solid NPT Plug & EPDM Gasket

**Bung Opening 2 = 2" BUTTRESS**



L10-WL / 81630001: 2" Natural Solid Buttress Plug & EPDM Gasket

<b>Capseal 1</b>  N/A	<b>Weepholes Required?</b> YES
	<b>Bag Part #:</b> N/A
<b>Capseal 2</b>  N/A	<b>Label Part # (Placement):</b> N/A
	<b>Stencil # (Placement):</b> N/A
	<b>Pallet Part #:</b> N/A <b>Pallet Arrangement:</b> N/A

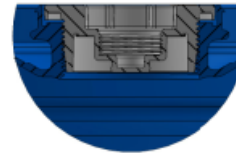
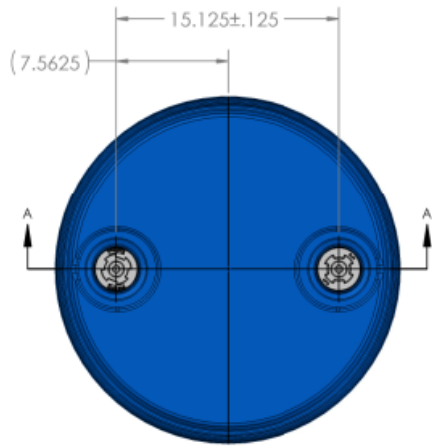
**DISCLAIMER**

THIS INFORMATION IS PROVIDED AS A GENERAL GUIDE, INCLUDING DIMENSIONS. IT IS THE CUSTOMER'S RESPONSIBILITIES TO SELECT THE PROPER CONTAINER FOR PRODUCT AND APPLICATION COMPATIBILITY.

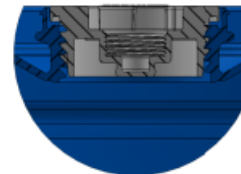
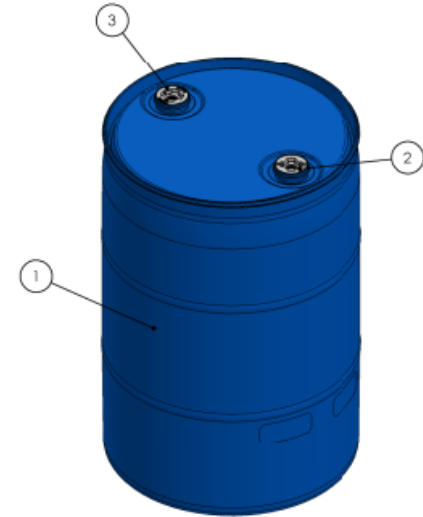
DISTRIBUTED BY: Pipeline Packaging

REF NO.:  
DWG30481

DESCRIPTION:  
55 Gallon White HDPE Tight Head Drum, 2 in Fittings

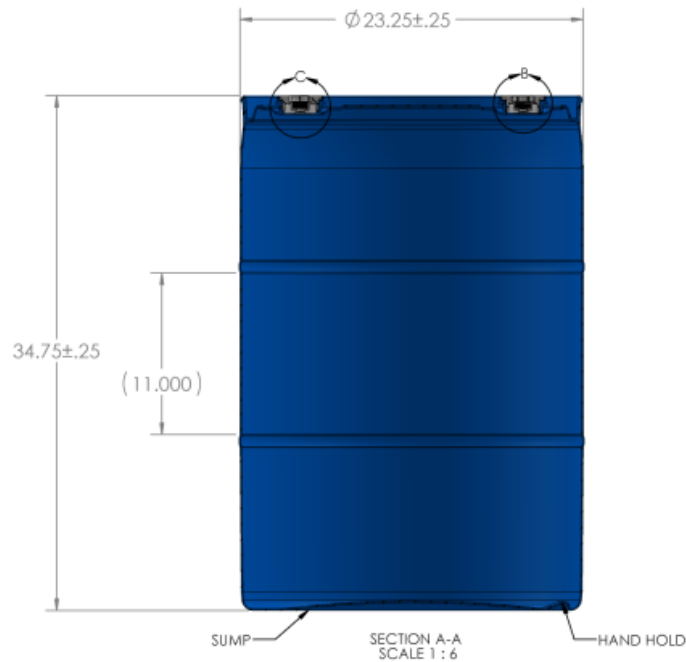


DETAIL B  
SCALE 1 : 1.5  
2" NPS CLOSURE



DETAIL C  
SCALE 1 : 1.5  
2" BUTTRESS CLOSURE

ITEM NO.	PART NUMBER	DESCRIPTION	QTY.
1	412-82-C-02	55 GAL. L1 DRUM	1
2	L16-WLXX	2" NPS PLUG	1
3	L10-WLXX	2" BUTTRESS PLUG	1



SECTION A-A  
SCALE 1 : 6

**DISCLAIMER**

THIS INFORMATION IS PROVIDED AS A GENERAL GUIDE, INCLUDING DIMENSIONS. IT IS THE CUSTOMER'S RESPONSIBILITIES TO SELECT THE PROPER CONTAINER FOR PRODUCT AND APPLICATION COMPATIBILITY.

DISTRIBUTED BY:



REF NO.:

DWG30481

DESCRIPTION:

55 Gallon White HDPE Tight Head Drum, 2 in Fittings