

IDE Drive Case

1 Drive 5.25 Inch External
USB IDE Case



Installation Manual

IDECASE525U



General Description

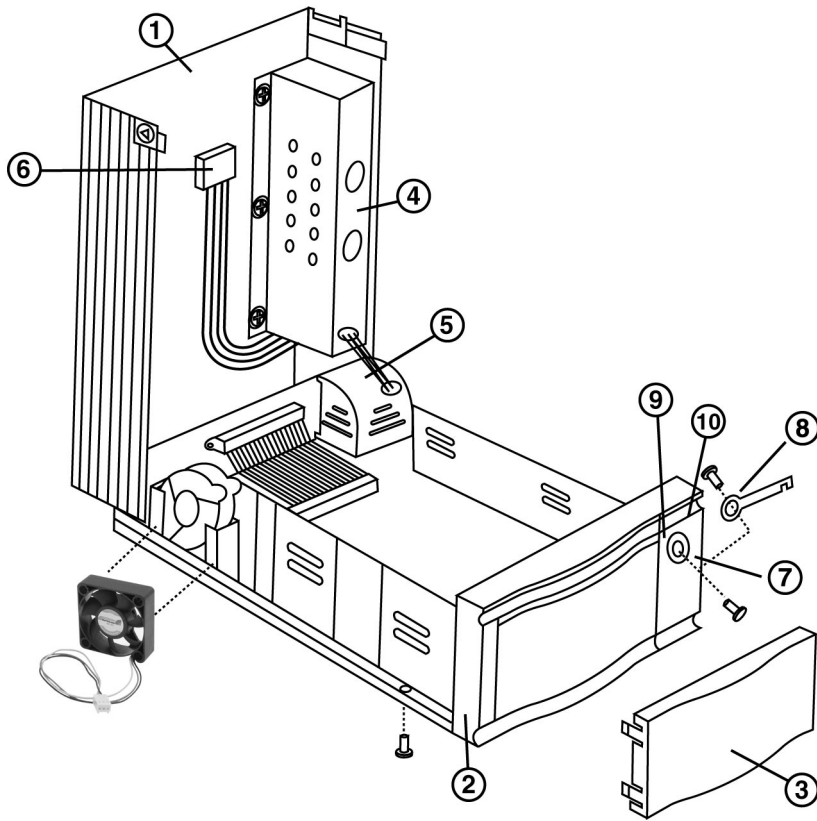
The StarTech.com external USB IDE drive case can turn any IDE drive into a portable drive. It provides a single 5.25 inch bay for IDE CD-ROM drives. 3.5 inch hard drives can be installed by using a 5.25 to 3.5 inch drive adapter bracket (not included). The sleek looking case features a lockable, flip-top lid for easy access and an internal 5 cm ball bearing cooling fan to keep the drive running cool. The high speed USB interface provides plug and play installation for Windows 98 and Windows 2000 users.

Getting Started

This section is designed to help you prepare the IDECASE525U for installation. Please read through this section carefully before attempting to install the IDECASE525U.

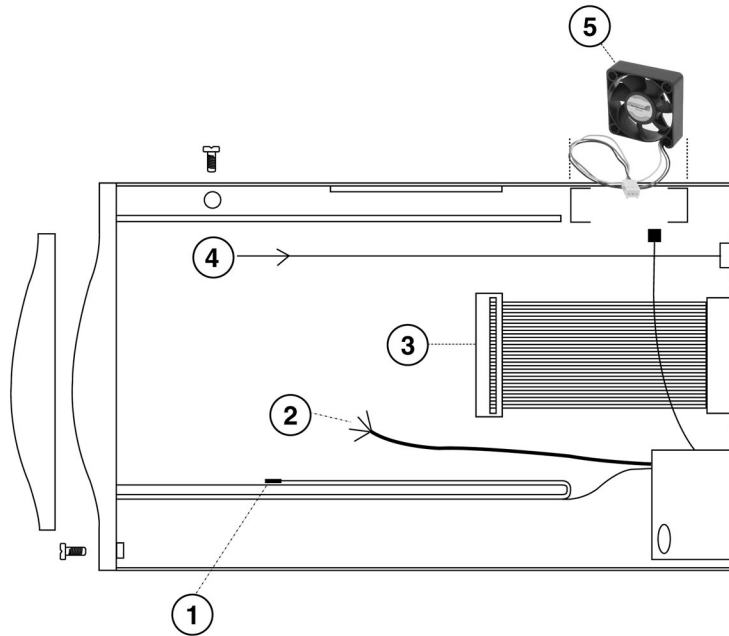
- 1 x IDE Drive Case
- 1 x A to B USB cable
- 1 x Power cord
- 2 x Keys to lock / unlock the drive
- 6 x 6-32 x 1/4" long (coarse thread) screws
- 1 x Driver disk

Parts Description



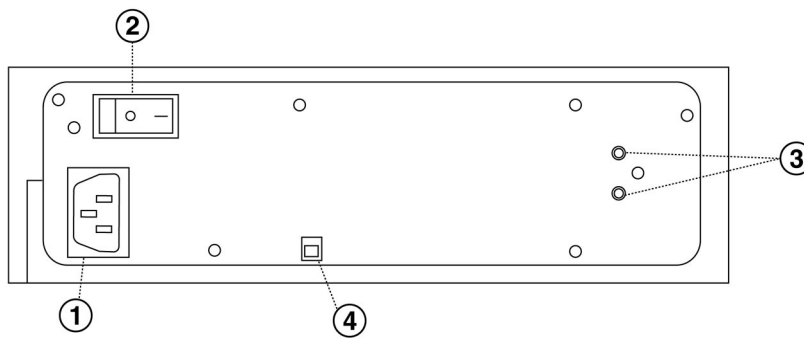
Overview

- | | |
|-----------------------|--------------------|
| 1) Cover | 6) 5V12V Power |
| 2) Front panel frame | 7) Key lock |
| 3) Front panel | 8) Lock pin |
| 4) Power shield plate | 9) HDD working LED |
| 5) Wire Cover box | 10) Power LED |



Top View

- 1) Working indicator
- 2) ID Switch
- 3) 40 pin cable (IDE)
- 4) Audio output
- 5) Cooling fan



Back View

- 1) Power input
- 2) Power switch
- 3) USB connector
- 4) Audio output (for CD-ROM only)

Installing USB devices into the Drive Case

1. Locate the arrow buttons on both sides of the case. Press the buttons and lift the cover.
2. To install your devices:
 - a) For CD-ROM - Install the CD-ROM and join the connector, power & RCA jack then fasten the enclosed screws on both sides of the interior side panels, securing the device into place.
 - b) For Hard Drive Drawers - Install the Hard Drive Drawer and join the connector & power then fasten the enclosed screws on both sides of the interior side panels, securing the device into place. (To install drive drawers that are 3.5 inches you require an adapter bracket, such as the StarTech.com **BRACKET**)
 - c) **For other devices, read the instructions on your device manual.**
3. Join the connectors with the following descriptions:

Color	Red	Blue	Yellow	Black
ID SW	1	2	4	COM

ID Switch (SCSI I/II)

Color	Red	Blue	Yellow	Brown	Black
ID SW	1	2	4	8	COM

ID Switch (Wide SCSI)

Color	Yellow	White
Yellow LED	+	-

HDD LED Out

Color	Red	White	Black
RCA Jack	Right	Len	COM

Audio

Color	Red	Black	Black	Yellow
DC power	+5	COM	COM	+12

Power

4. Close the cover.

5. Use the enclosed disk to set up your system.

Note: There is also a second screw-lock at the bottom left side. The box is completely locked when you fasten both the screw locks and your front lock. To keep your data safe, it is strongly suggested that you fasten both locks to prevent vibration and shock during transportation.

Installing the Drivers

Before the actual installation, make sure the power to the target device is turned ON. The power source could be from a built-in power supply, external wall mount AC adapter or keyboard adapter.

Windows 95 OSR2.5 & 98/98SE Installation

1. Enable USB Function on your PC's BIOS.
2. Connect the USB Adapter to the appropriate port on the computer. The following dialogue box will appear.



3. Click <Next>



4. Click <Next>



5. Make sure the driver diskette is in then floppy drive. The Click <Next>.



6. Click <Next>



7. Click <Finish>

The installation is now complete. Note: There is no need to uninstall the drivers when the device is removed. Simply unplug the adapter from the host computer.

Windows 2000 Installation

1. Connect the USB Adapter to the appropriate port on the computer. When the icon appears in your system tray, the installation is complete.

New Hard Disk Drive Installation Under Windows 95 & 98/98SE

1. Connect the brand new HDD without partition on the computer with the USB adapter. The new HDD will not appear in "My Computer". Find it in "My Computer\Control Panel\System\Device Manager\"
2. Click <Properties\Settings>
3. Check <Int 13 Unit>, then Click <OK>. You will be asked to reboot the system. Close all programs and reboot.
4. Click <Start\Run> and type <fdisk>. Make a partition for the new HDD by following the descriptions of the "fdisk" program.
5. After rebooting, you should be able to find the new HDD in "My Computer". Right click the HDD to format it. The installation is now complete. The HDD is available now.

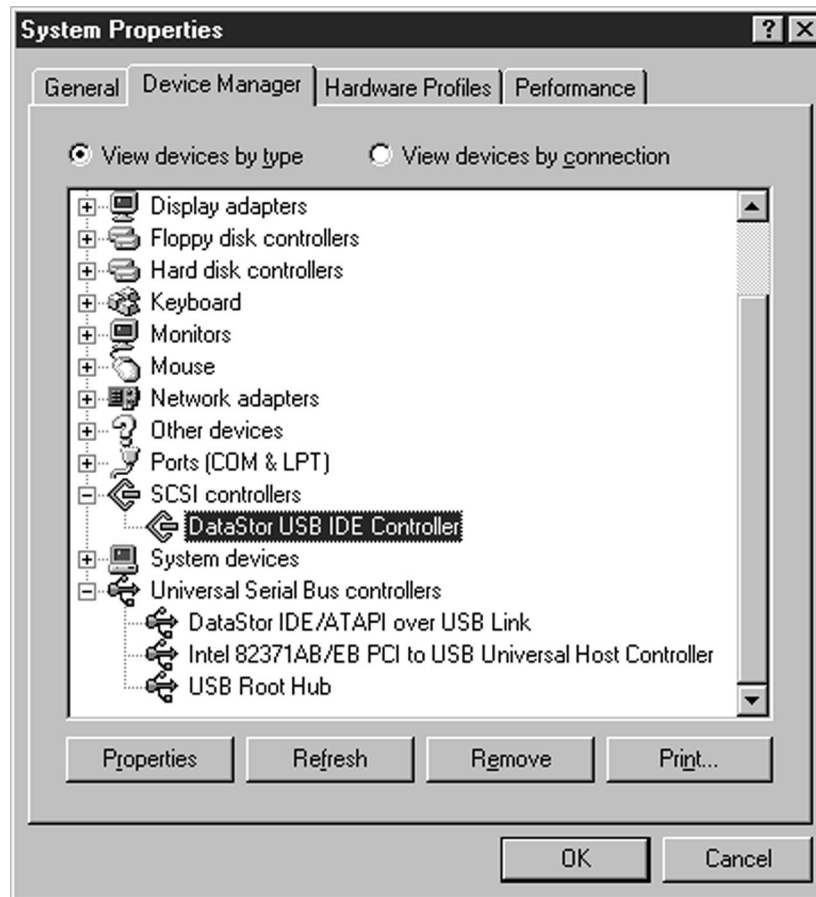
HDD Installation Windows 2000

1. Go to "My Computer\Control Panel\Administration Tools\Computer Management\Storage\Disk Management". Right click to Create Partition.
2. Click <Next>
3. Click <Next>
4. Click <Next>
5. Click <Next>
6. Click <Next>

7. Click <Finish>. The installation is now complete. The HDD is available.

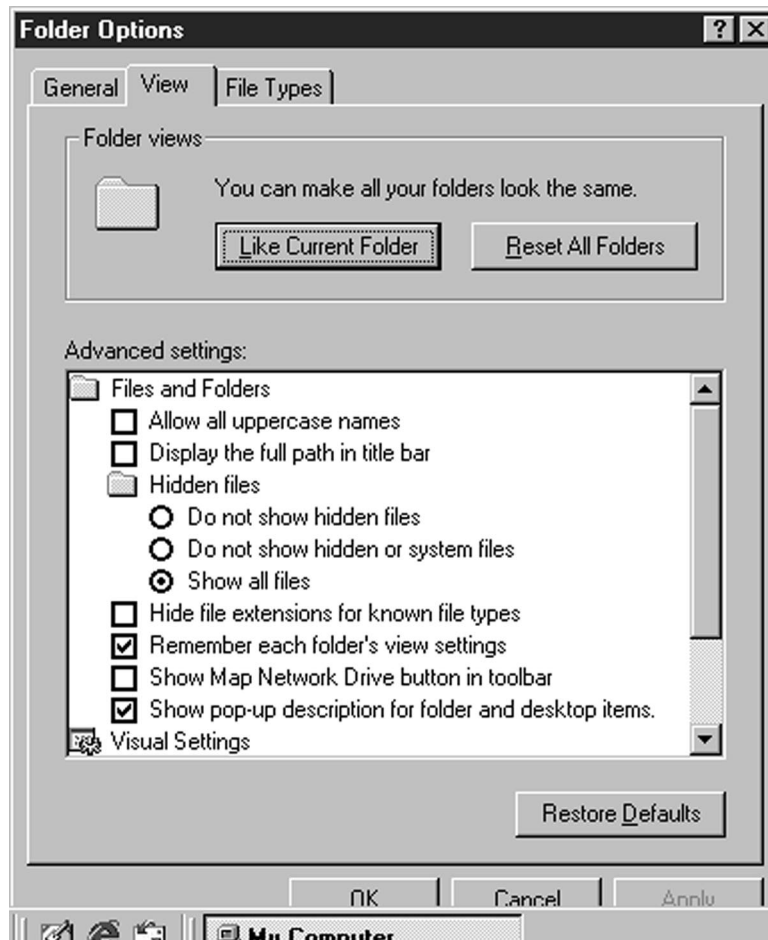
Windows 95 & 08/98SE Uninstallation

Generally, there is no need to uninstall the USB driver. If it is necessary to uninstall, follow the steps below.



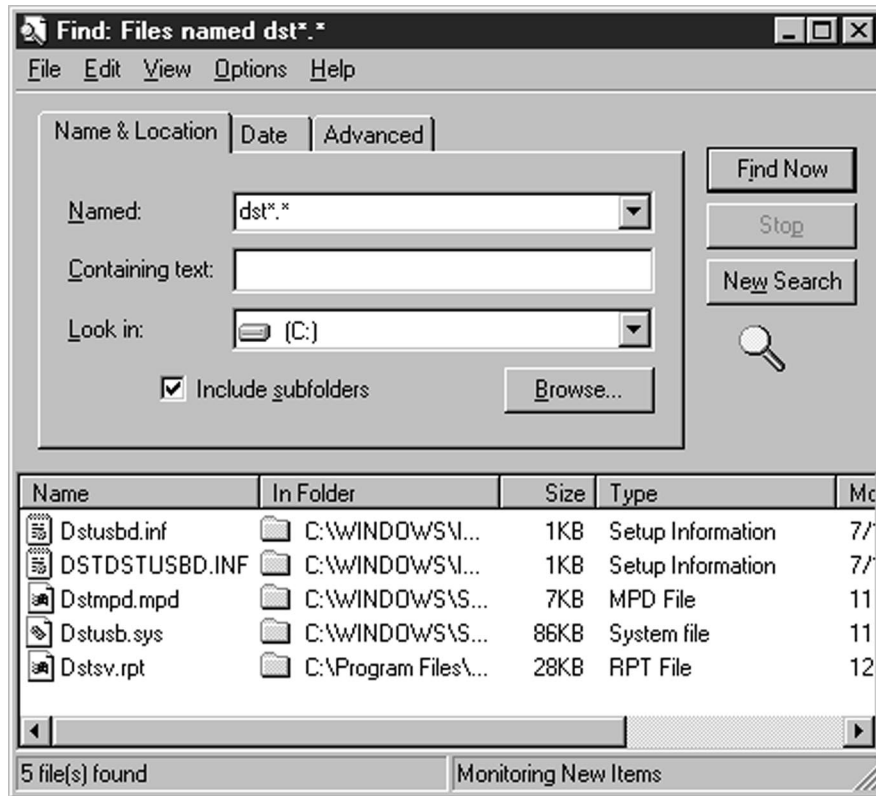
3. Go to "My Computer\Control Panel\System\

2. Remove the two devices.



3. Go to "My Computer\View\Folder Options\View"

4. Check <Show all files>



5. Click "Start\Find\Files or Folders". Type "dst*.*" to find.

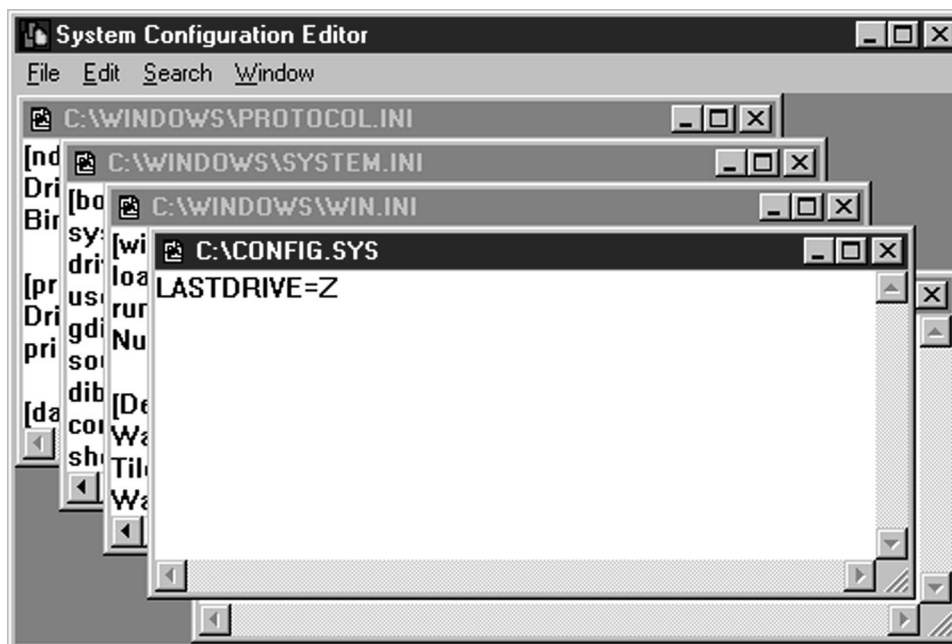
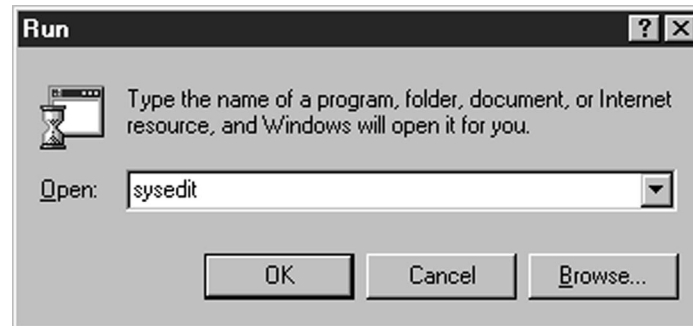
Remove our software driver completely

Remove from the below file data-tree structure:

1. C:\Windows\inf\Dstusb.inf
2. C:\Windows\inf\other\DSTDSTUSBD.INF

3. C:\Windows\system\iosubsys\Dstmpd.mpd
4. C:\Windows\system32\Drivers\Dstusb.sys

The uninstallation is now complete.



If your driver letter in "My Computer" is already up to "F", add "LASTDRIVE=Z" in Config.sys.

Macintosh Platform

Features

1. Complies with USB specification V1.1 and USB Mass Storage Specification V1.0
2. High speed USB 12Mbit/s Bulk mode yields over 1 Mbps data transfer rate*
3. High performance processor to reduce firmware overhead
4. Dual (ping-pong) buffer to minimize bus latency
5. Compatible with MAC OS embedded drivers for Plug n' Play operation
6. Proprietary drivers for Windows 95/98 operation
7. Supports ATA and ATAPI protocols
8. FCC Class B and CE Certified

*Device performance may vary.

Hardware requirements

iMac, G3, G4, and iBook

Software Requirements

MAC OS 8.1 or above

Limitations

1. HDD can only be set up to 1GB under FAT16 file system, no limitation under FAT32 formatted drives.
2. MO supported up to 540MB

Installation

Connect the USB Adapter to the appropriate port on the computer. When the icon appears the installation is complete.

When installing a brand new device to a Mac, you may be asked to erase the new storage. Go to "Special/Erase Disk" to make it available.