

Meet the new **CDG Modular** LED Downlight from **NICOR**

A versatile lighting solution that combines modular design features with selectable wattage/color temperature and wireless control technology.



Low Surface **Temperature**

Designed with a special heat dissipation technology that allows for an ambient temperature rating of -4°F to 113°F (-20°C to 45°C)



LOW
MED
HIGH

Selectable Wattage

12W / 25W / 38W



Flexible **Optical System**

Standard field-adjustable optics produce a range of 36° to 60°, while the optional narrow optic spans 22° to 36° for a more focused light distribution.



2700K
3000K
3500K
4000K
5000K

Selectable CCT

27K / 30K / 35K / 40K / 50K



Adjustable **Wall Washing**

Clip on, rotatable wall wash lens accessory available for refined directional lighting

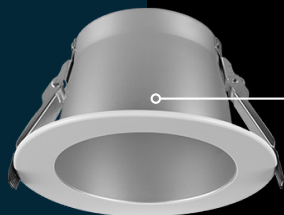


Customizable **Trims**

Choose from a variety of reflector finishes: Haze, White, Specular Smooth (6"), or Specular Prismatic (4").

Selectable Beam Angle

22° to 36° / 36° to 60°



Scan QR code to
see it in action



Available in 4" and 6"



Clear

Haze

White



Can be used to comply with
2019 Title 24 Part 6
T24
High Efficacy LED Light
Source Requirements

