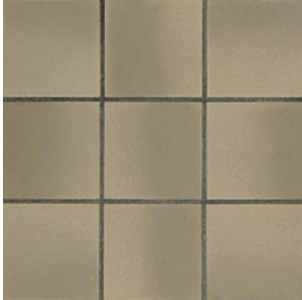


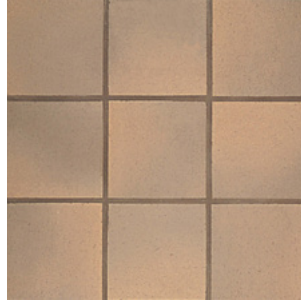
Parkette

WARM COLORS OF PARKETTE EVOKE IMAGES OF KILN-FIRED BRICKS.

Colors



Ash Flash



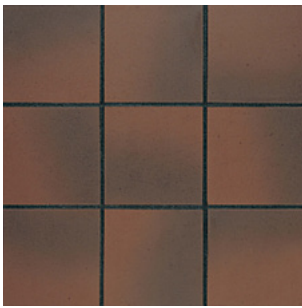
Beige Flash



Burnt



Gray



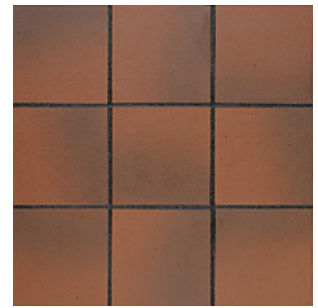
Mahogany



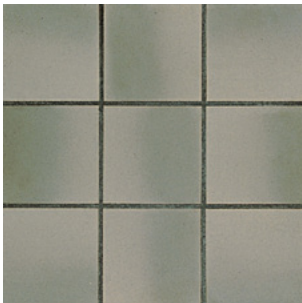
Red



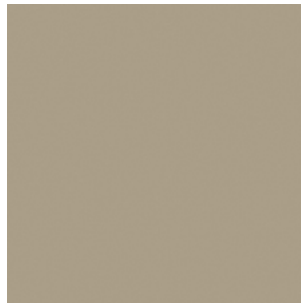
Sand



Sienna Flash

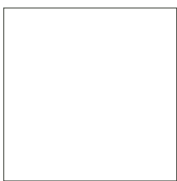


Silver Flash



Stone

Sizes



8" x 8"



6" x 6"



4" x 8"

Field Tiles*

SIZE	THICKNESS	FINISH
8" x 8"	12.7mm	Abrasive & Matte
6" x 6"	12.7mm	Abrasive & Matte
4" x 8"	12.7 mm	Abrasive & Matte

Mosaics & Coordinating Trims*

SIZE	FINISH
1" x 5" Cove Base Inside Corner	Matte
4" x 8" Bullnose	Matte
5" x 6" Round Top Cove Base Corner Left	Matte
5" x 6" Round Top Cove Base Corner Right	Matte
5" x 6" Round Top Cove Base	Matte
5" x 8" Cove Base	Matte
6" x 6" Bullnose	Abrasive & Matte
6" x 6" Bullnose Corner	Matte
8" x 8" Bullnose Corner	Matte
8" x 8" Bullnose	Matte

Product Characteristics

Breaking Strength (ASTM C648 or ISO 10545-4)	Range of >350 lbs to >400 lbs
Chemical Resistance (ASTM C650 or ISO 10545-13)	Resistant
DCOF	Range of ≥ 0.60 to ≥ 0.65
Deep Scratch Resistance - Unglazed (ISO 10545-6)	Not Resistant
Frost Resistance (ASTM C1026 or ISO 10545-12)	Not Resistant
Mohs Hardness - EN101	7
Water Absorption (ASTM C373 or ISO 10545-3)	<3.0%
Certifications	Not Applicable
Country of Origin	USA
Shade Variation Code	v3 & v4

*Not all sizes/trims are available in all colors and finishes

THE WARM COLORS OF PARKETTE EVOKE IMAGES OF KILN-FIRED BRICKS. PERFECT FOR WALKWAYS OR HIGH-TRAFFIC AREAS, THIS HIGH-PERFORMANCE TILE ENSURES AN ATMOSPHERE OF COMFORT FOR ANY COMMERCIAL APPLICATION.

Request samples.

www.vitlsurfaces.com
samples@vitlsurfaces.com

