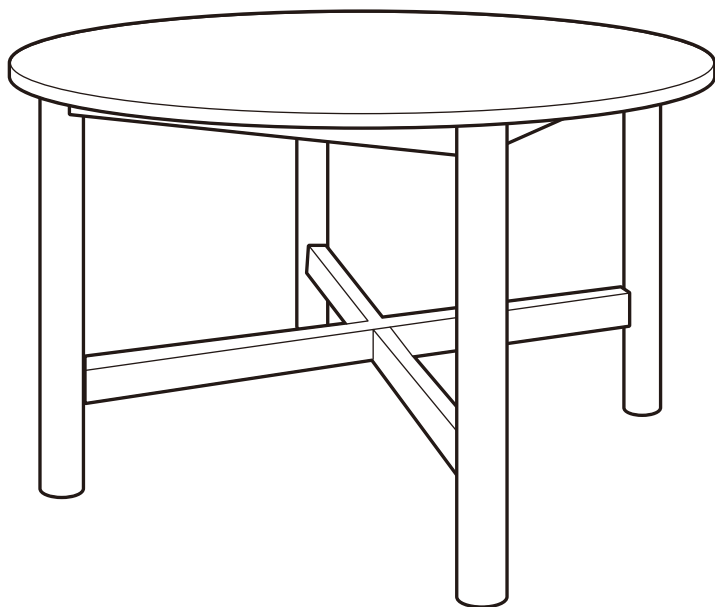




BEST CHOICE
PRODUCTS



INSTRUCTION MANUAL

47in Round Wooden
Dining Table

! NOTICE

Please retain these instructions for future reference.

- Please do not exceed the weight limitations of this item.
- Do not stand on or use any part of this item as a step ladder.
- Firmly secure all bolts, screws, or knobs before use.
- Reconfirm that all bolts, screws, or knobs are secure every 90 days.
- Fasten screws loosely during initial assembly. Do not firmly tighten the screws until the item is completely assembled.
- Do not use or store this item in the proximity of open flame or flammable/combustible chemicals.
- Be aware that some parts are heavy and have sharp edges.
- If any parts are missing, broken, damaged, or worn, stop using this product until repairs are made and/or factory replacement parts are installed.
- Do not use this item in a way inconsistent with the manufacturer's instructions as this could void the product warranty.
- This product is intended for residential use only.

CARE INSTRUCTIONS

To keep your wooden tabletop looking its best:

- Dust regularly with a soft, dry cloth.
- Clean gently using a soft cloth dampened with cool water and a small amount of mild dish soap.
- Dry immediately with a clean towel to prevent moisture damage.
- Protect the surface by using placemats, coasters, and trivets to guard against heat, spills, and scratches.
- **OPTIONAL:** For added durability, consider applying a protective wood finish or sealant suitable for rubberwood.

TOOLS REQUIRED



PHILLIPS
SCREWDRIVER
(NOT PROVIDED)



M4 ALLEN WRENCH
(PROVIDED)



300 LBS
CAPACITY



1 PERSON
ASSEMBLY



UP TO 30 MIN.
ASSEMBLY

HARDWARE

1

M6 x 60mm
BOLT



28 PCS

2

1/4" SPRING
WASHER



28 PCS

3

M6 x 13mm
FLAT WASHER



20 PCS

4

5/16" FLAT
WASHER



8 PCS

HARDWARE

5

M3.5 x 16mm
SCREW



4 PCS

6

JOINER PLATE



2 PCS

7

M10 x 30mm
DOWEL



4 PCS

8

FOOT SLIDER

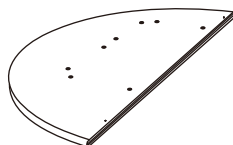


4 PCS

PARTS

A

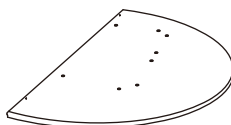
TABLETOP (TOP)



1 PC

B

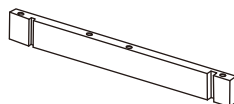
TABLETOP (BOTTOM)



1 PC

C

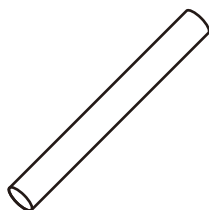
APRON



4 PCS

D

LEG



4 PCS

E

LEG SUPPORT (TOP)



1 PC

F

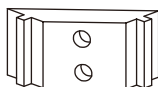
LEG SUPPORT
(BOTTOM)



1 PC

G

CORNER BLOCK

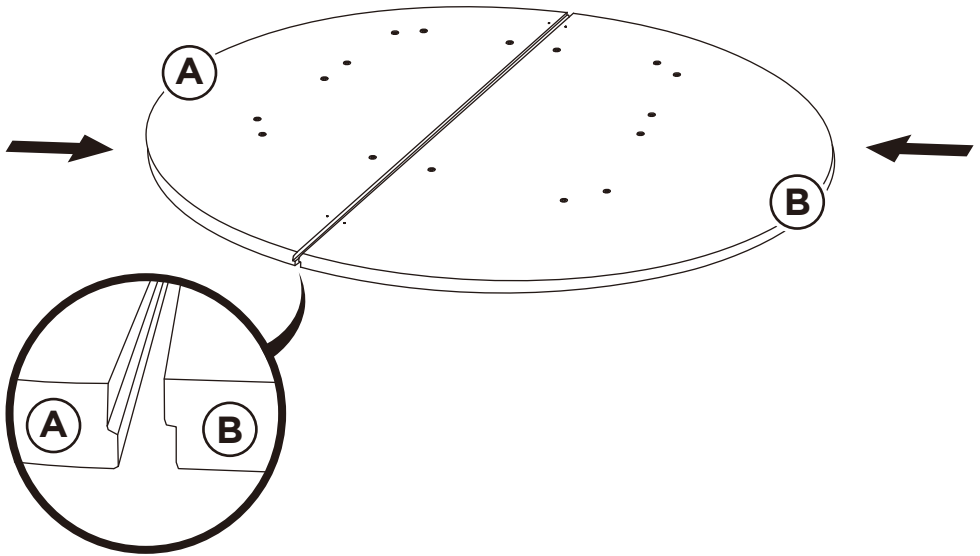


4 PCS

PRODUCT ASSEMBLY

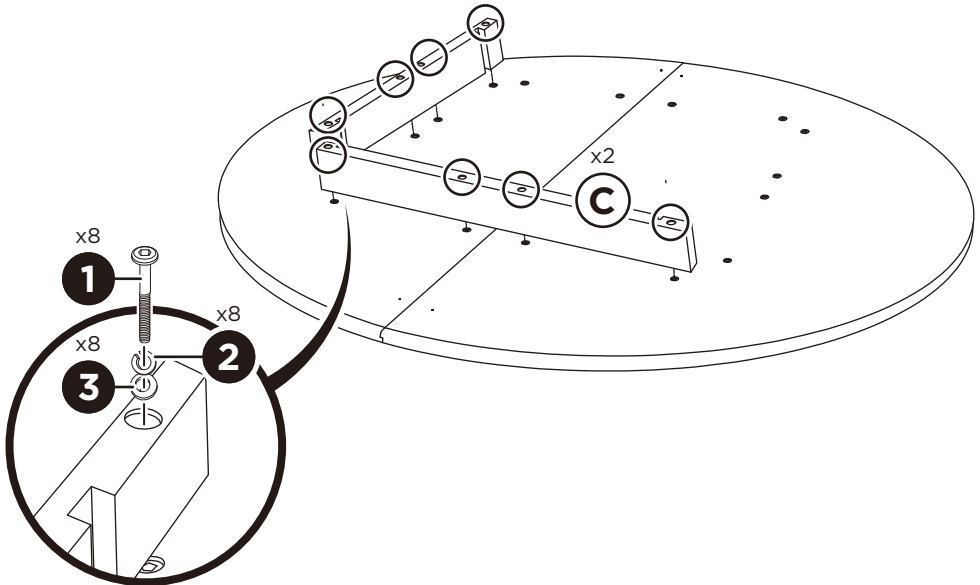
1

Place the **part A** and **part B** tabletops face down on a flat, covered surface to prevent scratches. Interlock the **part A** and **part B** tabletops as indicated below.



2

Attach two **C** part aprons to the bottom of the tabletop with eight **part 1** bolts, eight **part 2** spring washers, and eight **part 3** flat washers.



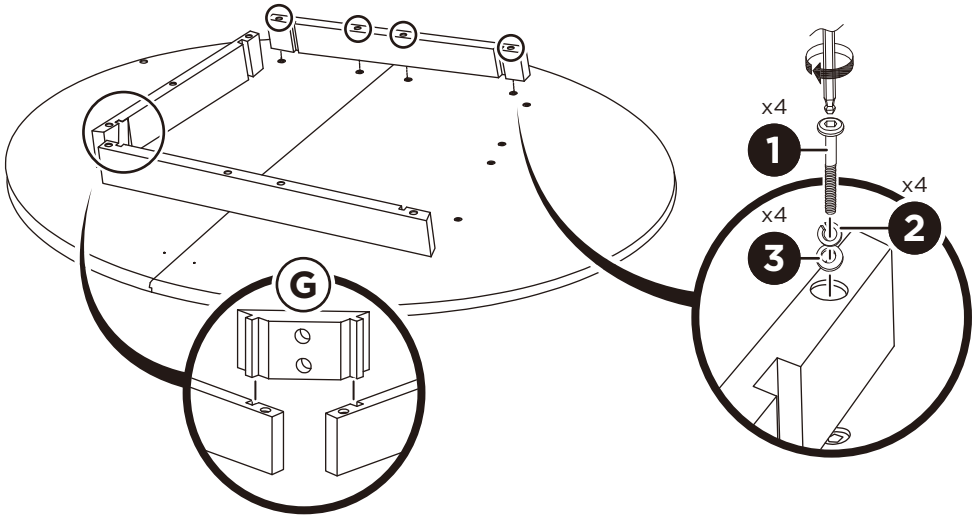
PRODUCT ASSEMBLY

3

Insert a **part G corner block** between the assembled **part C** aprons.

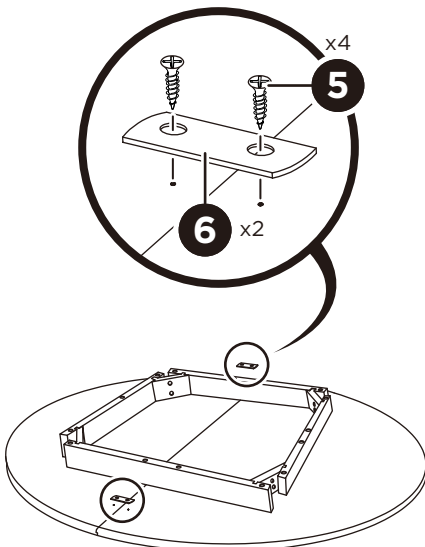
Attach another **C** part apron with four **part 1 bolts**, four **part 2 spring washers**, and four **part 3 flat washers**.

Repeat to attach the remaining **part C** apron and three **part G** corner blocks.



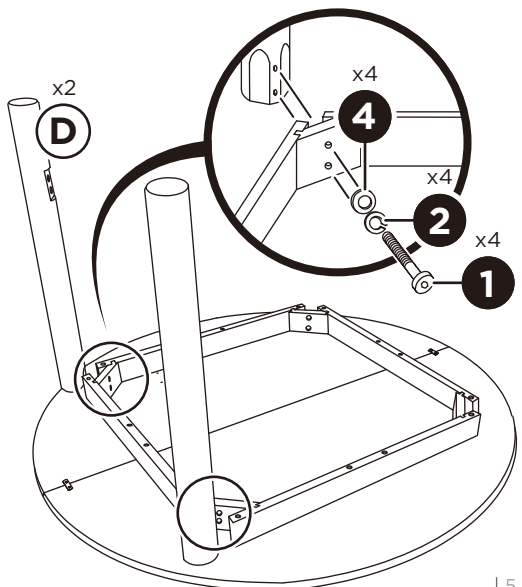
4

Secure the tabletop with two **part 6** joiner plates and four **part 5** screws.



5

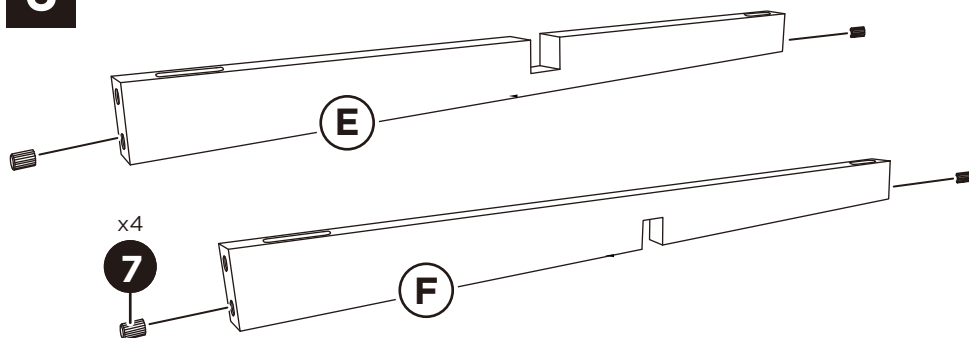
Attach two **part D** legs with four **part 1 bolts**, four **part 2 spring washers**, and four **part 4 flat washers**.



PRODUCT ASSEMBLY

6

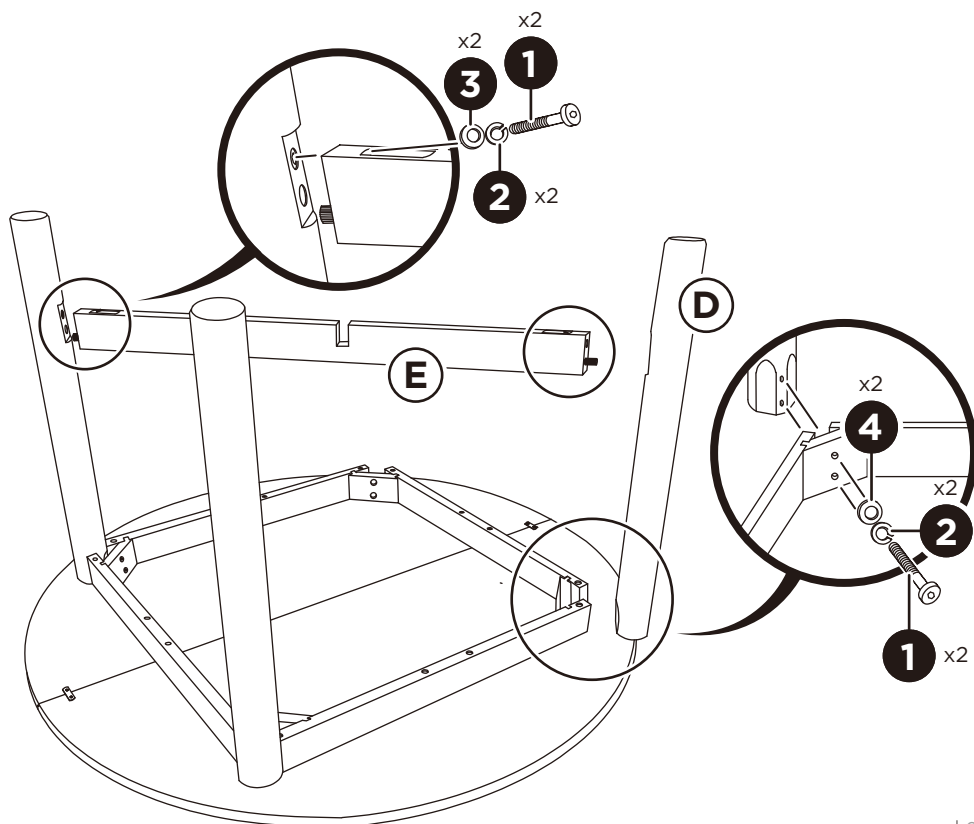
Locate the **part E** and **part F** leg supports and insert two **part 7** dowels into each, four dowels total.



7

Attach the **part E** leg support (top) with two **part 1** bolts, two **part 2** spring washers, and two **part 3** flat washers.

Attach another **part D** leg with two **part 1** bolts, two **part 2** spring washers, and two **part 4** flat washers.



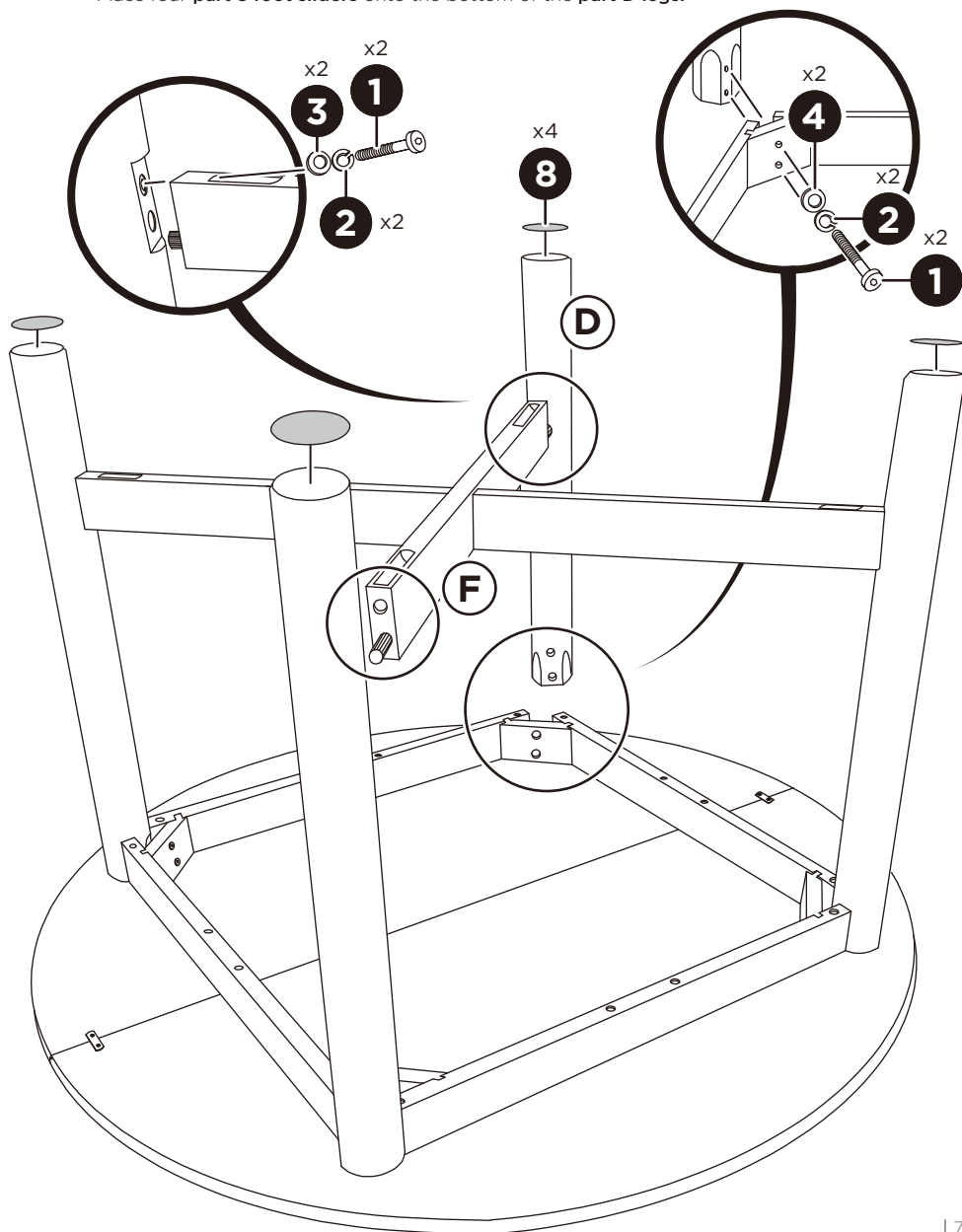
PRODUCT ASSEMBLY

8

Attach the **part F leg support (bottom)** with two **part 1 bolts**, two **part 2 spring washers**, and two **part 3 flat washers**.

Attach another **part D leg** with two **part 1 bolts**, two **part 2 spring washers**, and two **part 4 flat washers**.

Place four **part 8 foot sliders** onto the bottom of the **part D legs**.





HELP CENTER



Question about your product? We're here to help. Visit us at:

help.bestchoiceproducts.com



Chat Support



Product Inquiry



Orders FAQ



Product Assembly



Returns & Refunds

PRODUCT WARRANTY INFORMATION

All items can be returned for any reason within 60 days of the receipt and will receive a full refund as long as the item is returned in its original product packaging and all accessories from its original shipment are included. All returned items will receive a full refund back to the original payment method. All returned items will not be charged a re-stocking fee.

All returned items require an RA (Return Authorization) number, which can only be provided by a Best Choice Products Customer Service Representative when the return request is submitted. Items received without an RA may not be accepted or may increase your return processing time. Once an item has been received by Best Choice Products, refunds or replacements will be processed within 5 business days.

All returns must be shipped back to the Best Choice Products Return Center at the customer's expense. If the reason for return is a result of an error by Best Choice Products then Best Choice Products will provide a pre-paid shipping label via email. Boxes for return shipping will not be provided by Best Choice Products, and is the customer's responsibility to either use the original shipping boxes or purchase new boxes.

Pictures may be required for some returns to ensure an item is not damaged prior to its return. Items returned are not considered undamaged until they are received by Best Choice Products and verified as such. All damages to items are the customer's responsibility until the item has been received by and acknowledge by Best Choice Products as undamaged.

© Best Choice Products, Inc. All rights reserved. Distributed by Best Choice Products, Inc. Newport Beach, CA 92660



WARNING

Manufacturer and seller expressly disclaim any and all liability for personal injury, property damage or loss, whether direct, indirect, or incidental, resulting from the incorrect attachment, improper use, inadequate maintenance, unapproved modification, or neglect of this product.