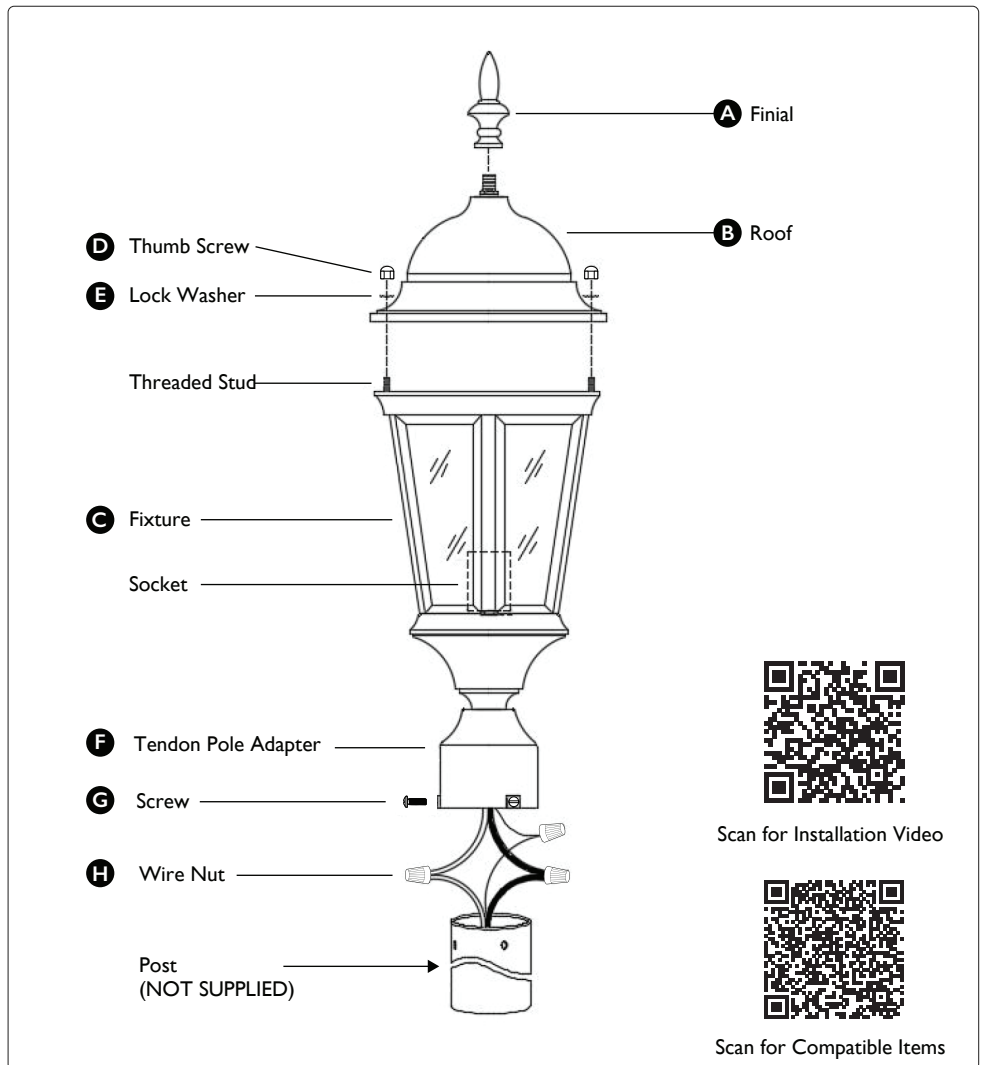
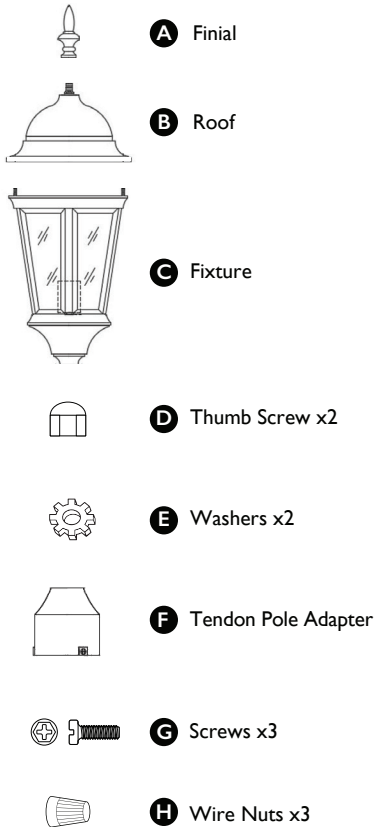


**Required Tools**

- Phillips Screwdriver

**What's in the box**



Scan for Installation Video



Scan for Compatible Items

**Caution**

This product contains chemicals known to the State of California to cause cancer, birth defects and/or other reproductive harm. Thoroughly wash hands after installing, handling, cleaning, or otherwise touching this product.

**If in doubt about electrical installation, consult a licensed electrician**

All electrical connections must be made in accordance with local and National Electrical Code (NEC) standards.

If you are unfamiliar with proper electrical wiring connections, obtain the services of a qualified electrician.

Remove the fixture and the mounting package from the box and make sure that no parts are missing by referencing the illustrations on the installation instructions. Tools are required when installing this fixture.

**Steps to Install**

1. Before installation, turn off the power at fuse or circuit breaker.
2. Carefully unpack and identify all parts.
3. Slip **fixture (C)** over post (*not included*) and mark position of mounting holes in post.
4. Remove **fixture (C)** from post.
5. Drill 3/16 inch diameter holes in post at positions marked.
6. Make wire connections with wire connectors:
  - A. Connect black wire from fixture to black supply wire(s).
  - B. Connect white wire from fixture to white supply wire(s).
  - C. If **fixture (C)** is provided with ground wire, connect fixture ground wire to outlet box ground wire with **wire nut (H)**. Never connect ground wire to black or white power supply wires.
  - D. Wrap all connections with approved electrical tape.
7. Slip **fixture (C)** over post and secure in place using provided **screws (G)**. **Screws (G)** should slip into holes drilled in post.
8. Install light bulb (*not included*). Refer to fixture labels for maximum wattage.
9. Place **roof (B)** on top of **fixture (C)**. Pass holes of **roof (B)** over threaded studs on **fixture (C)**.
10. Thread **thumb screws (D)** and **lock washers (E)** on to threaded studs. Do not over tighten.
11. Thread **finial (A)** on to threaded pipe on top of the roof. Do not over tighten.
12. After installation, turn on the power at fuse or circuit breaker.

# Lamp Post Installation Guide

Please read all instructions carefully before installing fixtures.

**CAUTION:** Disconnect power at the breaker box before beginning installation. Turning off power at the switch alone is inadequate. To ensure your safety properly disconnect the main power supply or serious injuries may occur.

- We strongly recommend that you check your local wiring codes and consult an electrical contractor before installing post.
- We do not guarantee this method of installation satisfies your particular local building codes. Please call local municipality.
- Before starting any digging project, call 811 to prevent against unintentionally hitting any underground utility lines.

**1**

Dig a hole 12"- 15" in diameter to the depth shown in the diagram to the left. Consult local codes.

Dig an additional 6" depth and pour in 6" of gravel for drain- age purposes.

Dig trench from power source to lamp post hole. Check local codes for trench depth.

Labels: 80", 18" NOM, Cement/Gravel, Gravel

**2**

Lay pole on ground and feed power line (not included) beginning through the inlet hole to top of pole. Allow 10" of extra wire at top of pole and leave remainder of wire at the bottom for connection to power source.

Labels: wire, Inlet hole, 10"

**3**

Place pole in center of hole and fill with gravel or cement to just below the inlet hole as shown below. Check local codes.

Run the remainder of the power line through trench to connect to power source.

Bury the power line and pole base.

Labels: Inlet hole, Cement/gravel

**4**

Connect convenience outlet, photocell, and fixture, if purchased. (Wire nuts not included)

**NOTE: IF YOU PREFER THE CONVENIENCE OUTLET TO BE CONTROLLED BY PHOTOCELL, CONNECT PHOTOCELL FIRST.**

Labels: LIGHT FIXTURE, CONVENIENCE OUTLET, PHOTOCELL, FIXTURE, 120V POWER SUPPLY, WIRE NUT OR OTHER ACCEPTABLE CONNECTOR, BLACK, WHITE, GROUND WIRE GREEN OR BARE, Photo-Control, 120V SUPPLY, Photo-Control Plug, Back, White, Green or Bare Wire, connect wires black to black white to white ground to ground

**5**

Insert cross arm, if purchased.

Turn on power.

Labels: Fixture (not included), convenience outlet/photo control (optional), cross arm (optional), power line, inlet hole, trench to power source, cement, gravel, gravel

**SAFETY NOTE:** Selecting a post for performance and safety requires a full understanding of various factors and conditions. Professional engineering assistance in selecting a post is highly recommended. Purchaser is responsible for meeting any codes or requirements. If you choose a post without getting such assistance, you do so at your own risk.