

12202R-LED-ICAT

2" LED Remodel Air Tight Housing

Product Description

The 12202R-LED features IDEAL connections that allows for quick, snap-in connection of NICOR® 2" D-series LED downlights. Suitable for residential and commercial applications.

Housing

- J-Box on articulated arm
- Triac dimmable LED driver is mounted directly to housing
- Only compatible with NICOR's 2" LED downlights: Available in round smooth, round baffle, square smooth, square baffle, adjustable gimbal and adjustable square
- Washington State Energy Code approved to meet restricted airflow requirements
- 3 1/2" height allows use in 2" x 6" joist construction

Junction Box

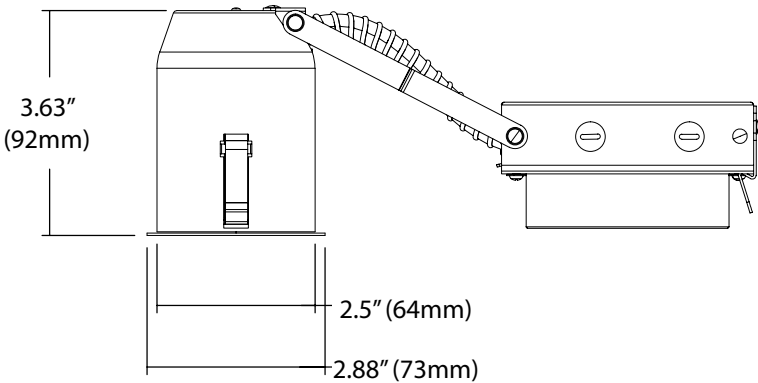
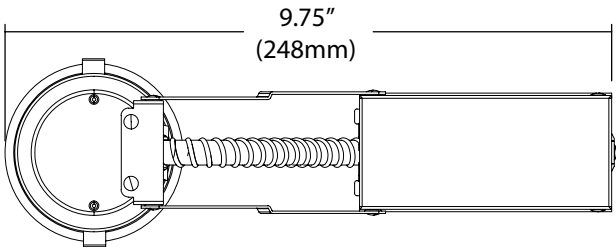
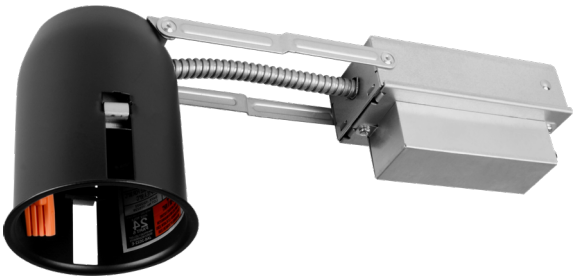
- Driver box is secured to housing with rivets for flexibility during installation
- Housing installs from below the ceiling and accommodates ceiling thicknesses from 1/2" to 1 1/2"
- Listed for through branch circuit wiring
- Includes two 3/8" knockouts
- Supplied with three push-in wire connectors

Project _____

Catalog _____

Type _____

Date _____



Ordering Information

Example: 12202R-LED-ICAT

Series	Description
12202R-LED-ICAT	2" LED Remodel Air Tight Housing

Specifications and dimensions subject to change without notice.

