

VANITY TOPS

INSTALLATION INSTRUCTIONS

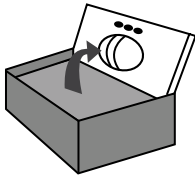


MATERIALS

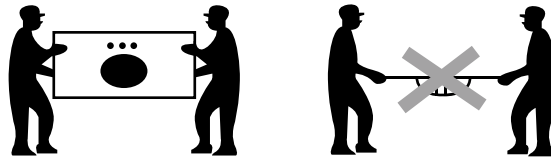
- 100% silicone
- kitchen & bath caulk
- liquid nails or PL adhesive
- caulking gun
- granite sealer
- acetone or natural stone cleaner
- caulk edging tool
- cloth towels

WARNING!

Although natural stone is very durable, it can become extremely fragile if handled incorrectly. Here are a few tips on how to handle your vanity without damaging it.

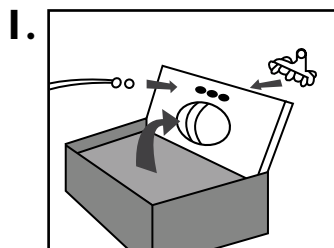


Remove vanity from box **VERTICALLY!**

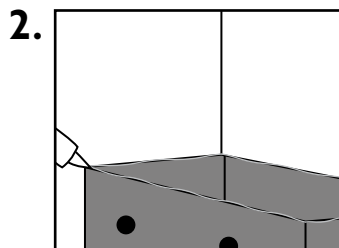


Carry the vanity upright, **NEVER** flat.

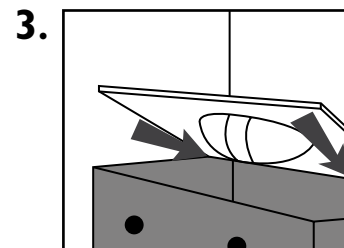
INSTALLATION



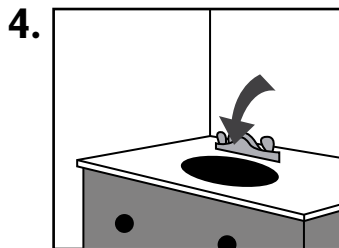
1. With a helper, stand the vanity up (as shown). This is a good time to install the faucet and drain per manufacturer's instructions.



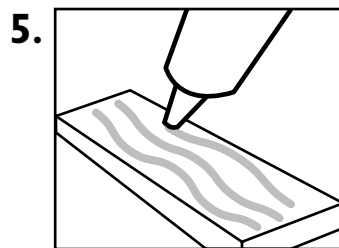
2. Outline the top of the cabinet with silicone.



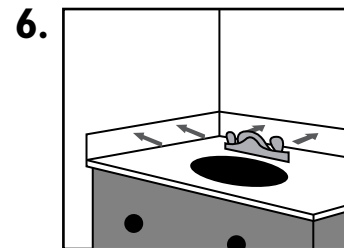
3. Clean off any excess silicone and place the vanity on the cabinet, back first.



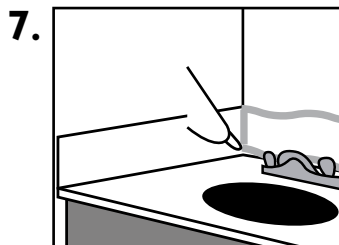
4. Carefully lay the vanity flat on the cabinet.



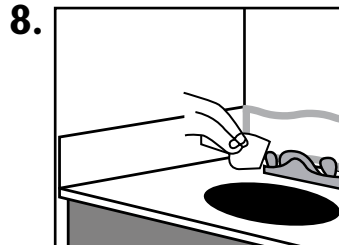
5. Use "Liquid Nail" or "PL Adhesive". Apply a generous amount to the back of the splash.



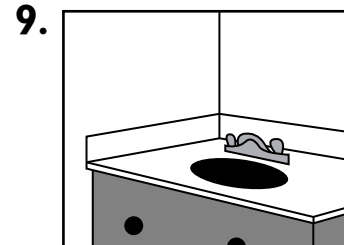
6. Carefully push the splash in place, making sure you firmly press it against the wall.



7. Apply "100% silicone" to the seam where the backsplash and/or sidesplash touches the granite top (indicated by grey line). Apply "kitchen & bathroom caulk" to the top edge of the splash that touches the wall.



8. With a caulk edging tool, run it across the seams to clear away excess silicone & caulk (this technique will leave a clean line of silicone & caulk over the seams).



9. Clean vanity with acetone or a commercial stone cleaner; then allow 24 hours for adhesive to fully dry.