

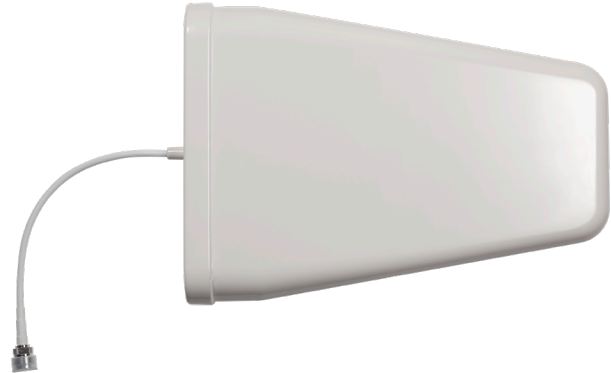
Wideband Directional Antenna 50 Ohm 617 MHz - 2700 MHz

SKU: 311233

MSRP: \$89.99

FEATURES

- Works on all worldwide cellular bands for voice and 4G data: LTE/CDMA/GSM/UMTS/AWS
- Supports 617-960 & 1710-2700 MHz cellular frequencies
- Band 71 support
- High performance for weBoost cellular boosters
- Designed for building exterior installation; direct at cell tower for best signal
- High efficiency and compact design
- UV stable white sealed radome
- Rugged and waterproof for all weather operation
- Simple install kit with tilt/swivel mast bracket for 1.25" to 2" diameter pipe/mast
- 2-year warranty



⚠️ WARNING: This product can expose you to chemicals including Nickel, which is known to the State of California to cause cancer, and Bisphenol A, which is known to the State of California to cause birth defects or other reproductive harm. For more information go to www.P65Warnings.ca.gov

Kit Includes



Antenna

Pole Mount & Hardware

Specifications

ELECTRICAL

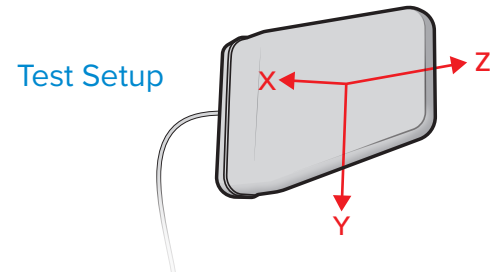
| Frequency Band (MHz) | 617-698 | 698-806 | 806-960 | 1710-1880 | 1850-1990 | 1910-2170 | 2300-2700 |
|------------------------------------|----------|---------|---------|-----------|-----------|-----------|-----------|
| Peak Gain (dBi) | 4.8 | 6.3 | 8 | 8.3 | 7.6 | 8.0 | 7.8 |
| Efficiency (%) | > 68% | | | >75% | | | |
| VSWR | <2.2:1 | <2.0:1 | <2.0:1 | <1.5:1 | | | |
| Polarization | Vertical | | | | | | |
| Half-Power Azimuth Beamwidth (°) | 135 | 115 | 90 | 67 | 83 | 75 | 90 |
| Half-Power Elevation Beamwidth (°) | 74 | 68 | 63 | 52 | 60 | 56 | 58 |
| Front-to-Back Ratio (dB) | 8 | 12 | 20 | 20 | 20 | 18 | 15 |
| Impedance (Ω) | 50 | | | | | | |
| Max Power (W) | 20 | | | | | | |

MECHANICAL

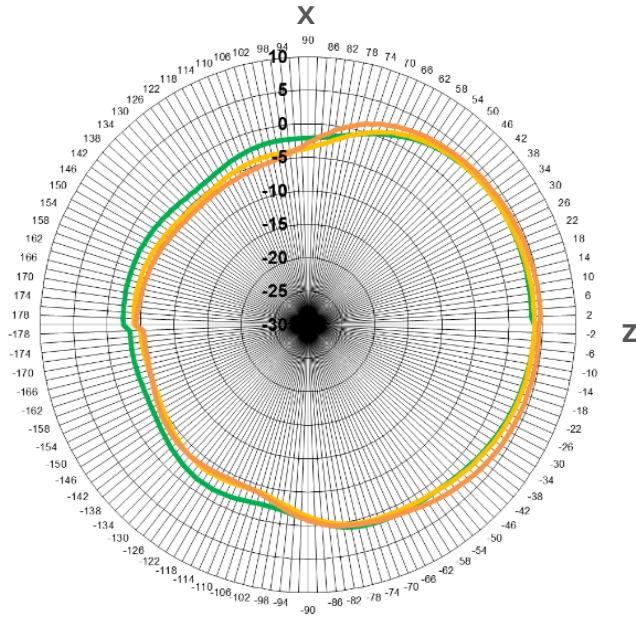
| | |
|--|----------------------------|
| Model | 311233 |
| Connector | N - Female |
| Dimensions (in / mm) | 11.5x8.2x2.5 / 294x210x65 |
| Shipping Dimensions (in / mm) | 12.9x8.5x2.9 / 330x 217x76 |
| Antenna weight (lb / kg) | 1.76 / 0.8 |
| Packing weight (lb / kg) | 1.9 / 0.9 |
| Wind Loading Area (ft ² /m ²) | ≥2.13 / 0.2 |
| Rated Wind Velocity (mph/kph) | 1.5-2.0 / 40-50 |
| Radiator Material | Aluminum |
| Radome Material | ABS |

Radiation Patterns, 620-670 MHz

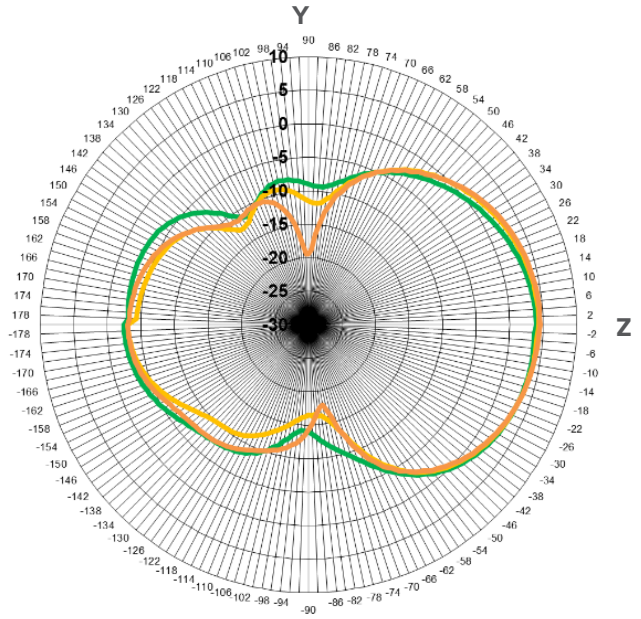
620 MHz 640 MHz 670 MHz



H Plane



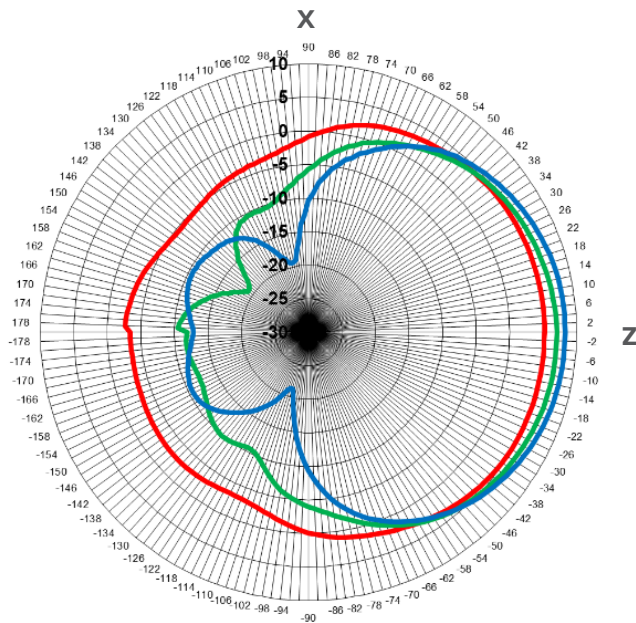
E Plane



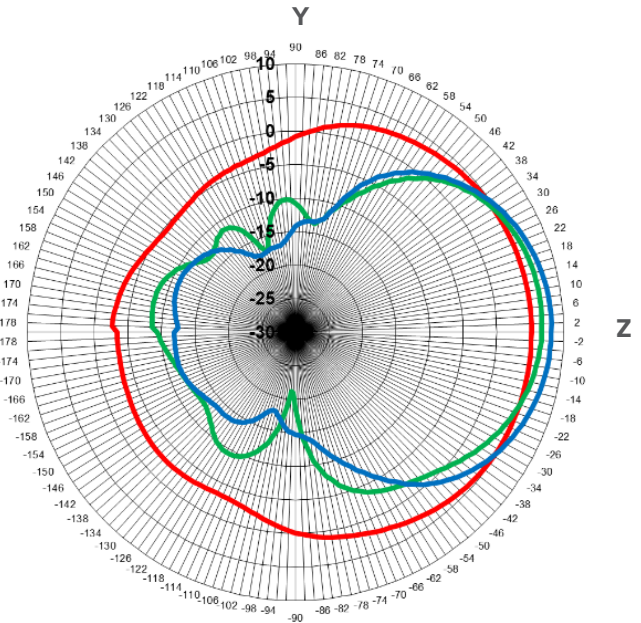
Radiation Patterns, 700-900 MHz

700 MHz 800 MHz 900 MHz

H Plane



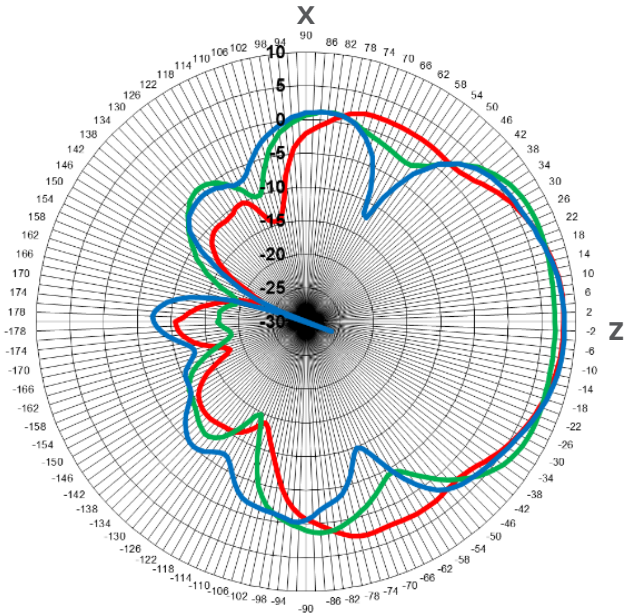
E Plane



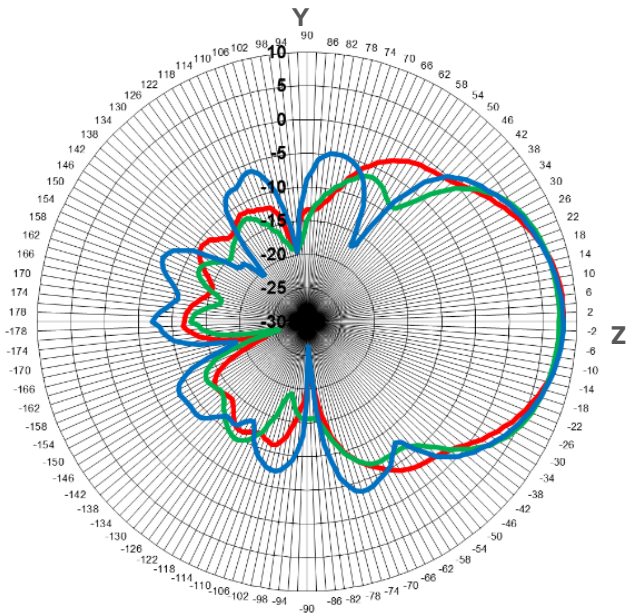
Radiation Patterns, 1700-2100 MHz

■ 1700 MHz ■ 1900 MHz ■ 2100 MHz

H Plane



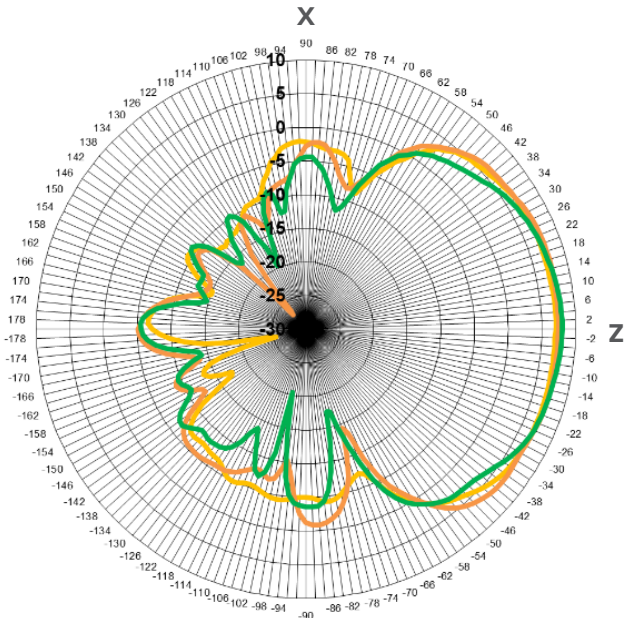
E Plane



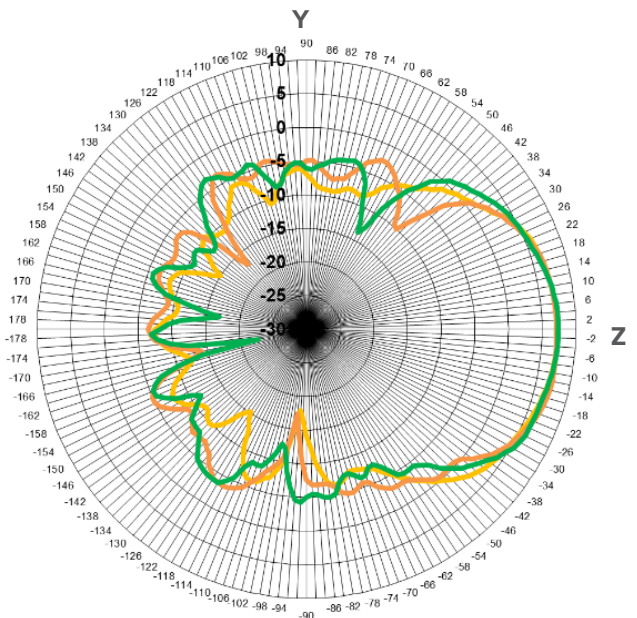
Radiation Patterns, 2300-2700 MHz

■ 2300 MHz ■ 2500 MHz ■ 2700 MHz

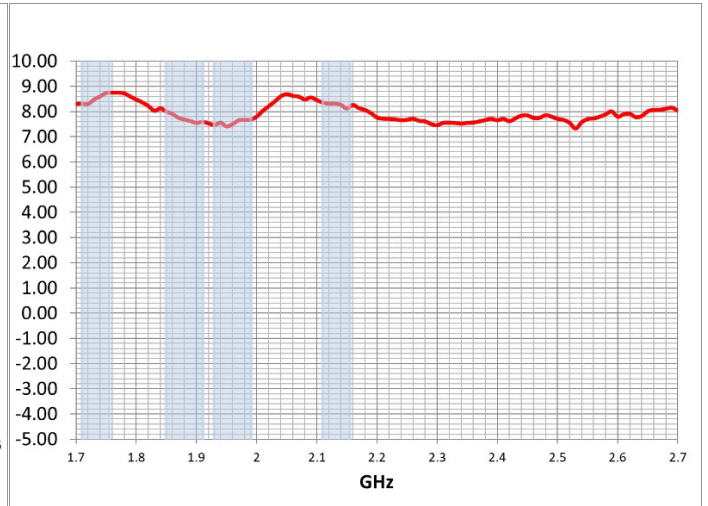
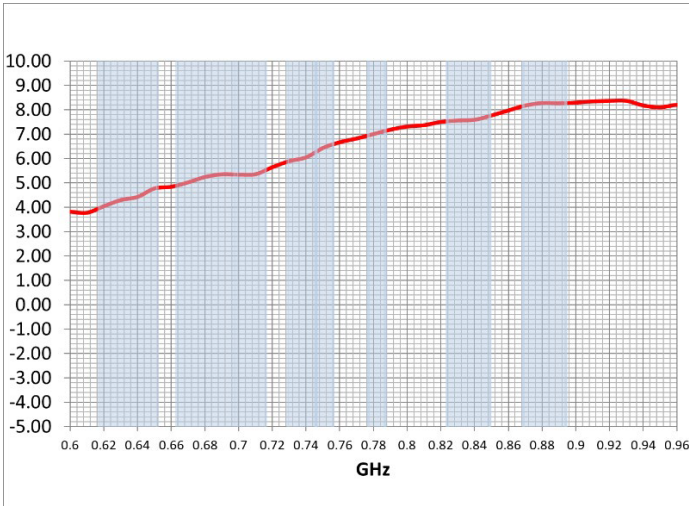
H Plane



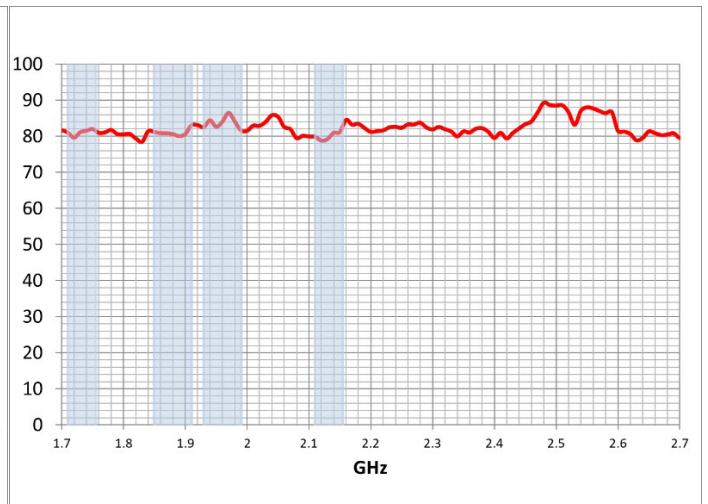
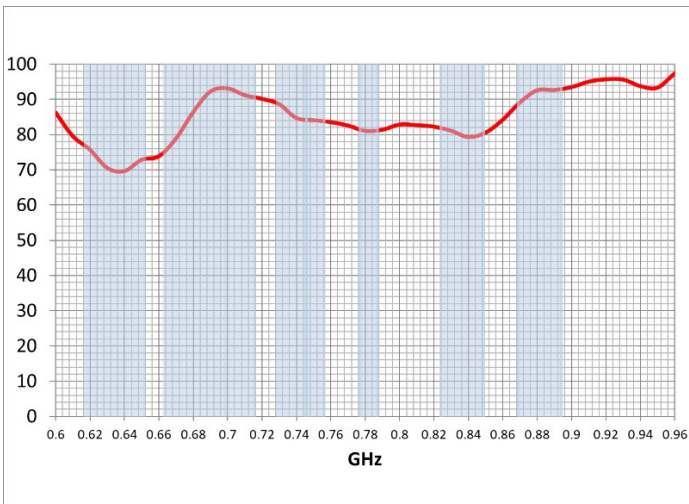
E Plane



Peak Gain

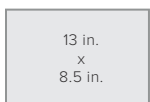


Efficiency (%)

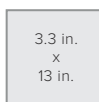


Package Dimensions

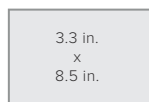
13 L x 8.5 W x 3.3 H



FRONT



SIDE



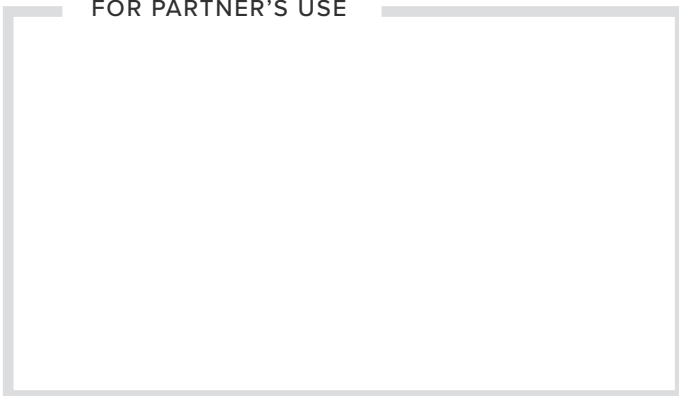
TOP/BOTTOM




WEIGHT

MASTER CARTON: 17.7 L x 17.7 W x 13.7 H | 23.1 lbs. | QTY. 10

FOR PARTNER'S USE



Support

 2 Year Warranty

Email: support@wilsonelectronics.com

Website: <http://support.weboost.com>

Phone: +1 866 294 1660 Monday to Saturday

* **WARNING:** Cancer and Reproductive Harm - www.P65Warnings.ca.gov.

ASSEMBLED IN THE USA



UPC

