

# Product data sheet

Specifications



## additional EMC filter S7 M2 - 1-phase supply - 22 A

VW3A31405

**Product availability: Non-Stock - Not normally stocked in distribution facility**

## Main

Range of Product	Altivar
Product or Component Type	EMC input filter
Range Compatibility	Altivar 312 Lexium 05 Altivar 312 Solar Altivar 31C Altivar Machine ATV320
Product compatibility	ATV312HU22M2 ATV31CU22M2 LXM05AD28F1 LXM05AD28M2 LXM05BD28F1 LXM05BD28M2 LXM05CD28M2 Variable speed drive ATV320...C2.2 kW, 200...240 V single phase Variable speed drive ATV320...W/ATV320...WS2.2 kW, 200...240 V single phase
Product Specific Application	Radio interference input filter
Line Rated Current	22 A
Thermal losses	7.5 W ATV31CU22M2
Phase	Single phase

## Complementary

maximum earth leakage current	80 mA 50 Hz
power supply voltage	200...240 V
Tolerance	10 %
Product Weight	2.49 lb(US) (1.13 kg)

## Environment

IP degree of protection	IP20 IP41 upper part)
Relative humidity	0...93 % IEC 68-2-3
Ambient air temperature for operation	14...122 °F (-10...50 °C)
Ambient Air Temperature for Storage	-13...158 °F (-25...70 °C)
Operating altitude	<= 3280.84 ft (1000 m) without current derating 3280.84...9842.52 ft (1000...3000 m) with current derating 1 % per 100 m
Vibration resistance	1 gn (f= 13...150 Hz) conforming to IEC 60068-2-6 1.5 mm peak to peak (f= 3...13 Hz) conforming to IEC 60068-2-6
Shock resistance	15 gn 11 ms IEC 60068-2-27
Standards	IEC 61800-3

Price is "List Price" and may be subject to a trade discount – check with your local distributor or retailer for actual price.

## Ordering and shipping details

Category	US1CP4B22154
Discount Schedule	CP4B
GTIN	3389110689471
Returnability	Yes
Country of origin	TH

## Packing Units

Unit Type of Package 1	PCE
Nbr. of units in pkg.	1
Package 1 Height	2.441 in (6.200 cm)
Package 1 Width	9.055 in (23.000 cm)
Package 1 Length	10.906 in (27.700 cm)
Package weight(Lbs)	33.827 oz (959.000 g)
Unit Type of Package 2	S04
Number of Units in Package 2	7
Package 2 Height	11.811 in (30.000 cm)
Package 2 Width	15.748 in (40.000 cm)
Package 2 Length	23.622 in (60.000 cm)
Package 2 Weight	16.460 lb(US) (7.466 kg)

## Contractual warranty

Warranty (in months)	18
----------------------	----



## Environmental Data

Schneider Electric aims to achieve Net Zero status by 2050 through supply chain partnerships, lower impact materials, and circularity via our ongoing “Use Better, Use Longer, Use Again” campaign to extend product lifetimes and recyclability.

[Environmental Data explained >](#)

[How we assess product sustainability >](#)

### Use Better



#### Materials and Substances

Packaging made with recycled cardboard	No
Packaging without single use plastic	No
EU RoHS Directive	<a href="#">Compliant</a>
REACH Regulation	<a href="#">Reference contains Substances of Very High Concern above the threshold</a>
California proposition 65	<b>WARNING:</b> This product can expose you to chemicals including: Lead and lead compounds, which is known to the State of California to cause cancer and birth defects or other reproductive harm. For more information go to <a href="http://www.P65Warnings.ca.gov">www.P65Warnings.ca.gov</a>

### Use Longer



#### Lifetime extension

Repair	No
--------	----

### Use Again



#### Repack and remanufacture

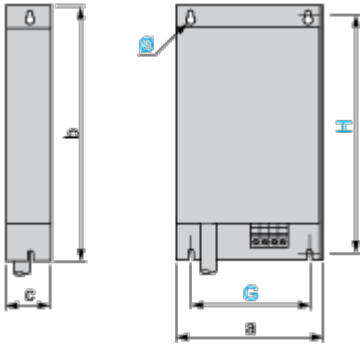
Take-back	No
-----------	----

Dimensions Drawings

Additional EMC Input Filters

---

Dimensions



Dimensions in mm

a	b	c	G	H	Ø
140	235	35	120	215	4.5

Dimensions in in.

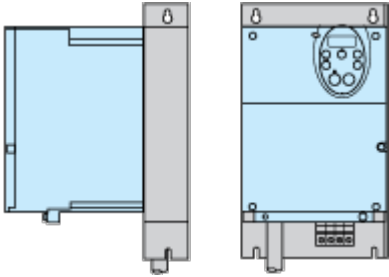
a	b	c	G	H	Ø
5.51	9.25	1.38	4.72	8.46	0.18

Mounting and Clearance

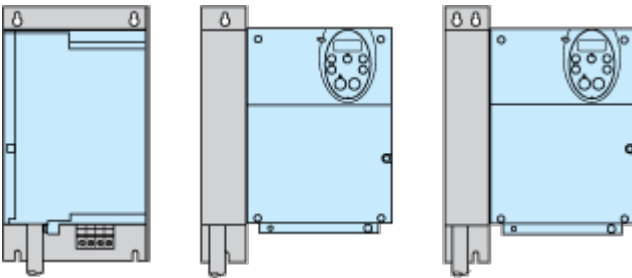
Additional EMC Input Filter

---

**Mounting the Filter under the Drive**



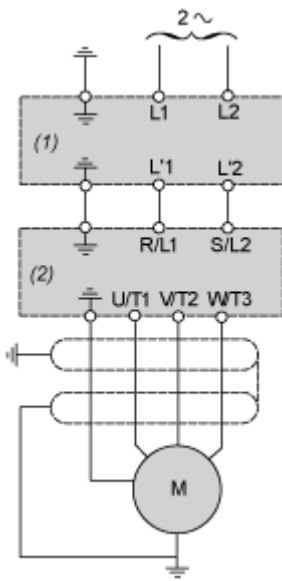
**Mounting the Filter next to the Drive**



Connections and Schema

Recommended Schema

---



- (1) Filter
- (2) Drive