



GE APPLIANCES
a Haier company

Part Install Instructions

Lint Filter and Handle Kit

WH01X35710, WH01X38017, WH01X38018, WH01X39864,
WE16X39861, WE01X36265



IMPORTANT SAFETY NOTICE

The information in this part instruction is intended for use by individuals possessing adequate backgrounds of electrical, electronic and mechanical experience. Any attempt to repair a major appliance may result in personal injury and property damage. The manufacturer or seller cannot be responsible for the interpretation of this information, nor can it assume any liability in connection with its use.



WARNING

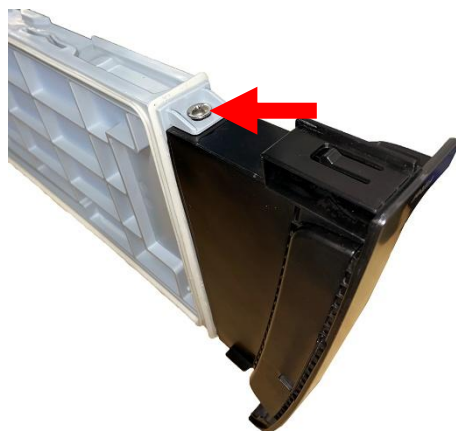
To avoid personal injury, disconnect power before servicing this appliance. If electrical power is required for diagnosis or test purposes, disconnect the power immediately after performing the necessary checks. **RECONNECT ALL GROUNDING DEVICES.** If grounding wires, screws, straps, clips, nuts, or washers used to complete a path to ground are removed for service, they must be returned to their original position and properly fastened.

Parts Included:

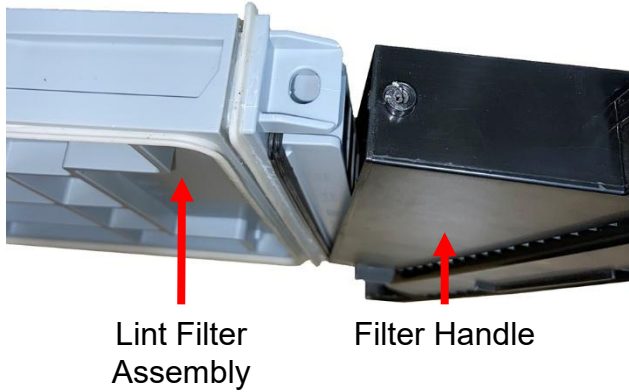
- Lint Filter Handle (WH01X35710 or WH01X38017 or WH01X38018 or WH01X39864)
or
- Lint Filter Assembly (WE16X39861)
or
- Lint Filter Handle Seal (WE01X36265)

Overview: These instructions are used for replacing the lint filter handle, lint filter assembly, or lint filter seal. When replacing the handle, reuse the existing lint filter assembly and seal. When replacing the lint filter assembly, reuse the existing handle and seal.

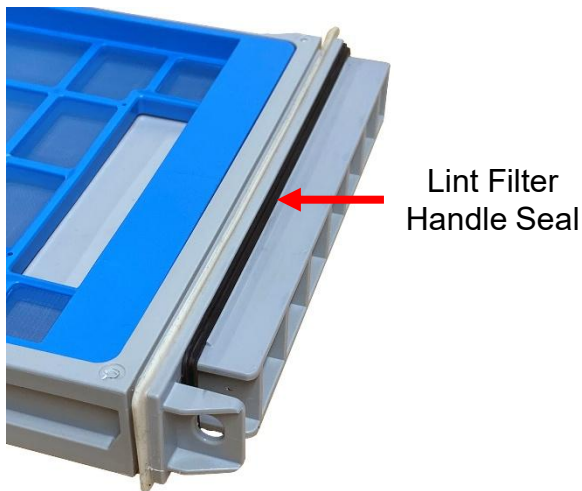
1. Remove one Phillips-head screw from bottom of lint filter assembly.



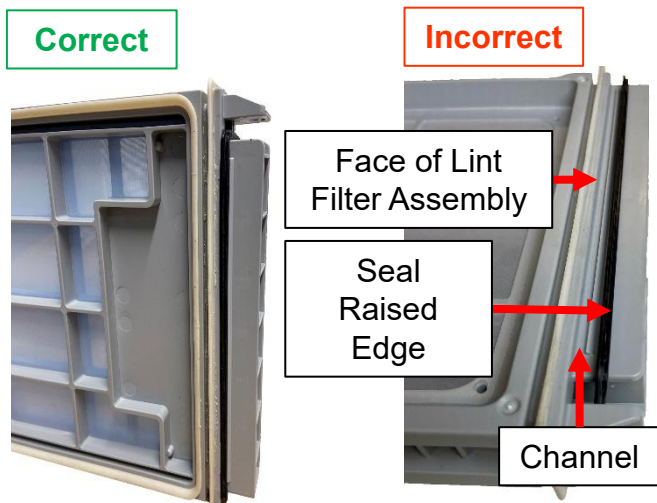
2. Slide filter handle down and pull out to remove from lint filter assembly.



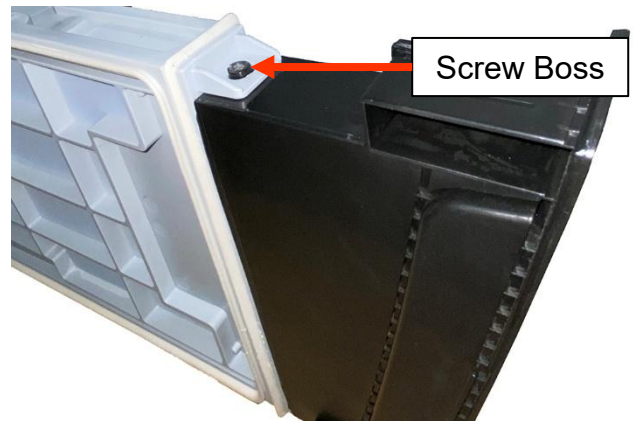
3. Remove lint filter handle seal from old filter and place on new filter.



4. Ensure the flat part of the seal rest against the face of the lint filter assembly and the raised side points toward the handle. Verify the seal is seated fully inside the channel of the lint filter as shown below.



5. Slide lint filter handle up so the screw boss is inserted into the hole in the tab on the lint filter assembly.



6. Install one Phillips-head screw. **NOTE:** Do not overtighten or damage may occur.

