

COMPONENT SPECIFICATION

USE OR REPRODUCTION OF THIS DRAWING FOR THE PURPOSE OF MANUFACTURING THIS ARTICLE OR ANY ARTICLES SHOWN FOR ANY PURPOSE IS STRICTLY PROHIBITED WITHOUT WRITTEN PERMISSION FROM SENIOR INDUSTRIES, INC.

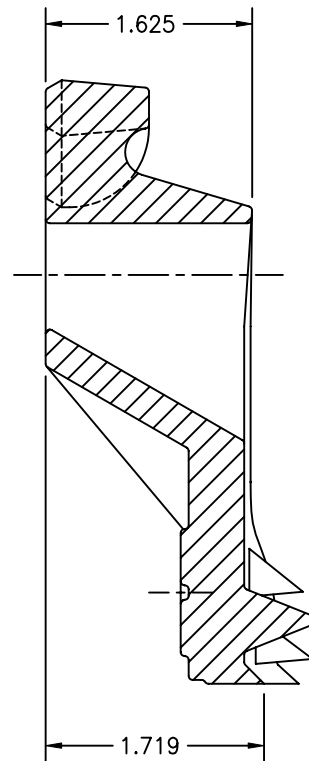
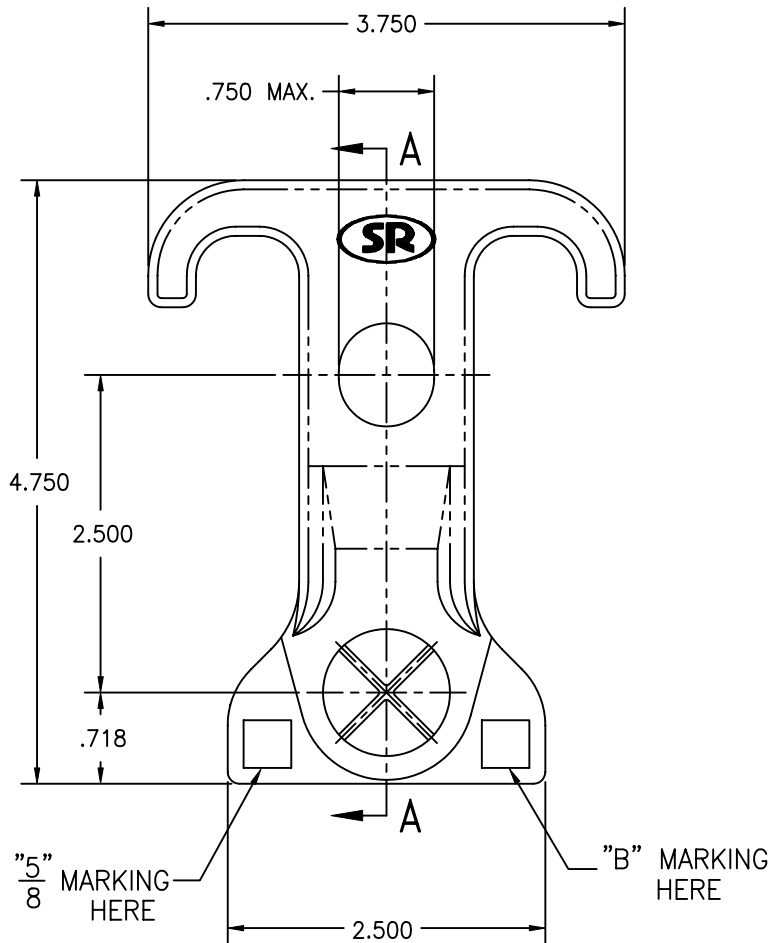
SPECIFICATIONS:

MECHANICAL:

RANGE: CLAMP ACCEPTS A 3/8" (10M) STRAND  
 TEST LOAD: 10,000 LBS WITHOUT DEGRADATION  
 ASSEMBLY MOUNT TO POLE: USING A 5/8" DIA BOLT THROUGH THE BOLT HOLE.

MATERIAL:

MATERIAL: MALLEABLE IRON PER ASTM A-47 OR  
 DUCTILE IRON PER ASTM A-536  
 GRADE 65-45-12, 60-45-10, 60-40-18  
 FINISH: HOT DIP GALVANIZED PER ASTM A-153 OR  
 MECHANICALLY PLATED PER ASTM B-695



SECTION A-A



**SENIOR INDUSTRIES, INC.**

|           |     |          |      |          |                           |        |       |                        |          |               |        |
|-----------|-----|----------|------|----------|---------------------------|--------|-------|------------------------|----------|---------------|--------|
| DESIGNED: |     |          | SYM. | DATE:    | DESCRIPTION OF REVISIONS: | DRAWN: | APPD: | TOLERANCE:             | PART NO: | SI-4425       |        |
| DRAWN:    | GAT | 06/15/07 | ▲    | 06.15.07 | NEW                       | GAT    | JF    |                        |          |               |        |
| CHECKED:  | GAT | 01/23/09 | ▲    | 01.23.09 | Showed dim .750 max.      | GAT    | JF    | TO 2 DECIMAL PLACE: ±  | TITLE:   | 5/8" GUY HOOK |        |
| APPROVED: | JF  | 01/23/09 | ▲    |          |                           |        |       | TO 3 DECIMAL PLACES: ± |          |               |        |
| 3RD ANGLE |     | UNIT:    | IN   | SCALE:   | 1:1                       | REV:   | B     | AS ANGLES:             | ±        | SHEET:        | 1 OF 1 |