



**Send Us a Text:** 1-812-652-2525  
(US and Canada Only.  
Carrier Fees May Apply)



**Find Us Online:** [www.safety1st.com](http://www.safety1st.com)  
**Email Us:** [support@djgusa.com](mailto:support@djgusa.com)



**Give Us a Call:** 1-800-544-1108  
(Toll Free, US and Canada Only)



## Grow and Go™ Sprint 6-in-1 Modular Travel System

**Featuring onBoard™ FLX Infant Car Seat**

Your model may look different than one shown on cover.



©2025 Dorel Juvenile Group, Inc. Safety 1st™ and the Safety 1st logo and design are trademarks of Dorel Juvenile Group, Inc. (800) 544-1108 [www.safety1st.com](http://www.safety1st.com). Styles and colors may vary. Los estilos y los colores pueden variar. Made in CHINA. Hecho en CHINA. Distributed by (distribuido por) Dorel Juvenile Group, Inc., 2525 State St., Columbus, IN 47201-7494. Dorel Juvenile Canada, 2233 Argentia Road, Suite 110, Mississauga, ON L5N 2X7. Representante exclusivo en Chile: DOREL JUVENILE CHILE S.A. Av. del Parque 4161, oficina 602 A, Huechuraba, Santiago, Chile - Fono: 56 2 24971500 - [www.infanti.cl](http://www.infanti.cl) - [www.dorel.cl](http://www.dorel.cl). Importado y distribuido en Perú por: COMEXA COMERCIALIZADORA EXTRANJERA S.A. SUCURSAL DEL PERÚ - Los Libertadores 455, San Isidro, Lima 27, Lima, Perú RUC 20431062870 - Fono: 4413029 - [www.infanti.com.pe](http://www.infanti.com.pe). En Centro América, Caribe y Ecuador por: Best Brands Group S.A. - Av. Balboa, Bay Mall Plaza, Planta Baja, local 9, Panamá. - Fono: (507) 300 2884. En Colombia por: Baby Universe S.A.S. - Vía 40 No. 77-29, Barranquilla, Colombia - Fono: (575) 353 1110 Importador: DJGM, S.A. DE C.V. Gabriel Mancera No. 1041 Col. Del Valle, Benito Juárez C.P. 03100 México, Ciudad de México R.F.C. DJG140305GN9 Tel. (55) 67199202



4358-8769 10.25.25



**Read all instructions before assembly and use of product. Keep these instructions for future use.**

**STROLLER** is suitable for a child, who can sit up unassisted, up to 50 lb (22.7 kg) and 41 in. (104 cm), and **WHEN SEATED**, the midpoint of the child's head is at or below the top of the stroller seat.

Storage maximum weight is 10 lb (4.5 kg).

Cup holder maximum weight is 2 lb (0.9 kg).

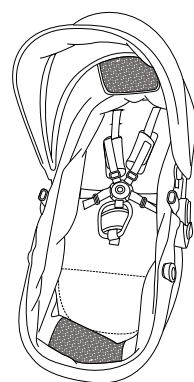
Adult assembly required.

## **WARNING**

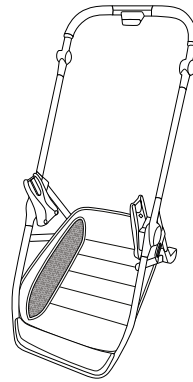
- Failure to follow these instructions could result in the death or serious injury of your child.
- **NEVER LEAVE CHILD UNATTENDED. ALWAYS** keep child in view when in stroller.
- **AVOID SERIOUS INJURY** from falling or sliding out. **ALWAYS** use seat belt. Check frequently to make sure it is secure.
- Child may slip into the leg openings and strangle. Always use carriage in recline position with clip behind the leg rest detached.
- **ALWAYS** keep fingers away from moving parts, when folding, unfolding, or adjusting stroller to prevent finger entrapment.
- **ALWAYS** make sure stroller is **FULLY OPEN AND LOCKED** before using.

- **ALWAYS** use the brakes when stroller is stopped.
- **ALWAYS** remove protective material and poly bags and dispose before assembly.
- **NEVER** put hot liquids in the cup holder.
- **NEVER** use stroller on stairs or escalators.
- **NEVER** rollerblade with stroller.
- **NEVER** allow children to play with or hang onto the stroller.
- **NEVER** allow children to climb into the stroller unassisted. Stroller may tip over and injure child.
- **NEVER** place or hang parcels, bags, or accessories on the product, handle, or canopy. The stroller may become unstable, or tip over.
- This product may become unstable if package carrying accessories, other than recommended by the manufacturer, are added.
- This product will become unstable if the manufacturer's recommended loads are exceeded.
- **ONLY** use this stroller with **ONE** child at a time.

Parts List.....	5	Using the Parking Brake.....	16
Assembly.....	6	Securing Your Child in the Stroller.....	18
Converting the Seat into Carriage Mode.....	10	Adjusting the Harness Straps.....	20
Adjusting the Stroller Seat.....	12	Folding the Stroller.....	22
Adjusting the Handlebar and Legrest.....	14	Car Seat Compatibility.....	24
Adjusting the Canopy.....	15	Care and Maintenance.....	26
		Replacement Parts and Warranty.....	31



Seat



Stroller Frame



Rear Wheel Axle



Cup Holder



Bumper Bar

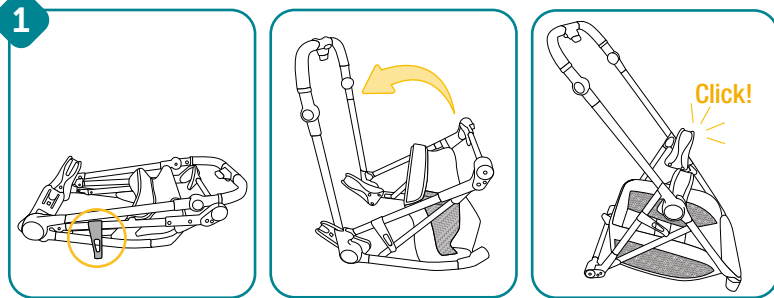


Front Wheels



Rear Wheels

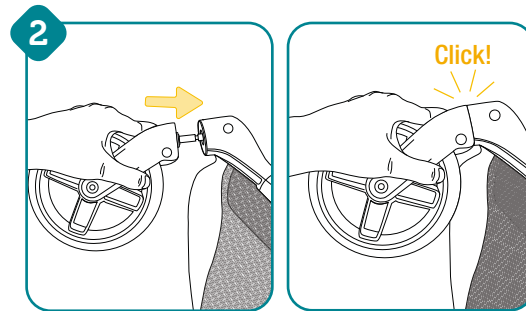
Lay out and identify all the parts. Do not return this product to the place of purchase. To address any issues or for help with assembly, contact Consumer Care at 1-800-544-1108, support@djgusa.com, safety1st.com, or by text at 1-812-652-2525. Include the model number (TR492) and manufacture date located on a label on the stroller frame, just above the storage basket.



### Unfold the stroller frame

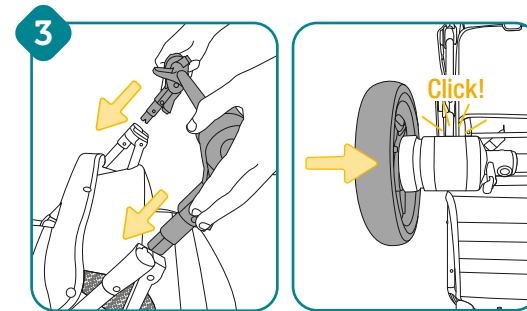
Lay the stroller frame flat on the ground. Lift and release the stroller's frame lock. Pull up on the handlebar until the stroller fully unfolds. It will click into place.

**⚠ WARNING**  
**ALWAYS** keep fingers away from moving parts, when folding, unfolding, or adjusting stroller to prevent finger entrapment.



### Install the front wheels

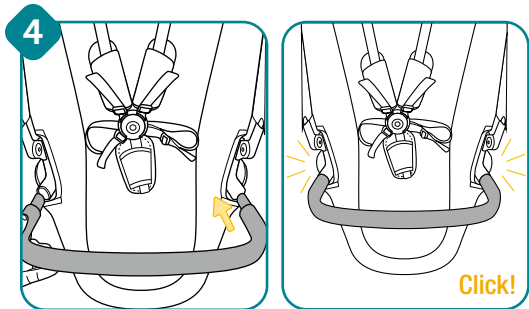
Slide each front wheel into the housing on the front of the stroller frame until each wheel clicks into place. Pull gently on each wheel to ensure they are installed securely.



### Install the rear wheels and axle

Line up the rear wheel axle with the openings on the stroller frame. Insert the rear wheel axle into the housing on the axle until each wheel clicks in place. Pull gently on each wheel to ensure they are installed securely.

*continued on next page*

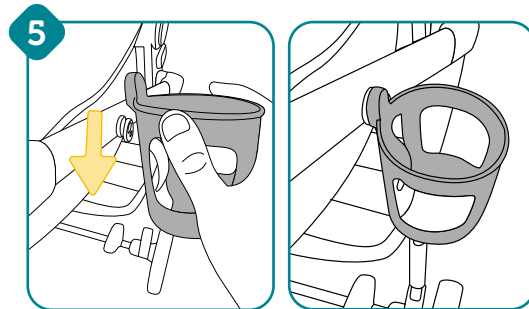


#### Install the bumper bar

Align the ends of the bumper bar with the slots on each side of the stroller seat. Insert the bumper bar into the slots until it clicks into place. Pull gently on the bumper bar once installed to ensure it has been installed securely.

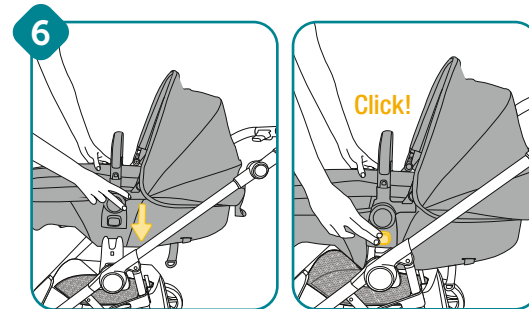
### **⚠ WARNING**

**ALWAYS** ensure bumper bar is installed securely before using the stroller.



#### Install the cup holder

Slide the cup holder down onto the notch on the side of the stroller frame. Pull gently on the cup holder to ensure that it is installed securely.



#### Install the seat

Align the stroller seat with the adapters on the sides of the stroller frame. Lower the seat down onto the adapters until it clicks into place. Pull gently on the seat to ensure it is installed securely.

The seat can be installed parent-facing (also known as rear-facing) or world-facing (also known as front-facing).



## Converting the Seat into Carriage Mode

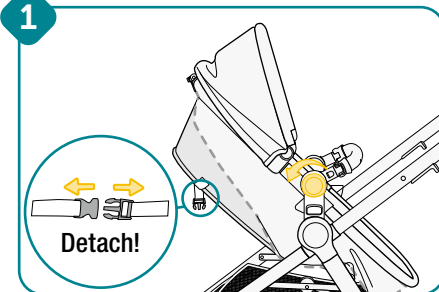


The seat can be facing either direction before being converted to carriage mode.

For easier access to the clips, remove the seat from the stroller frame and flip the seat upside down. To remove the seat, see page 29.

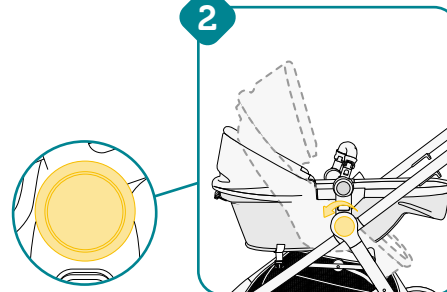


1



**To convert the seat into carriage mode:** Unfasten the clip behind the seatback to let the seatback drop down.

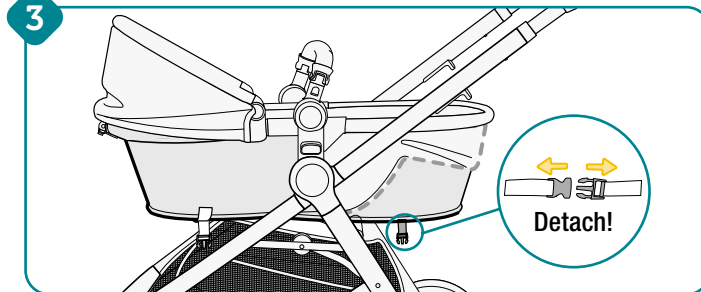
2



Adjust the seat to be as far back as possible and adjust the legrest so that it is completely flat.

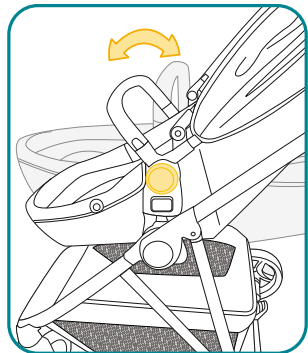
To adjust the seat, see page 12. To adjust the legrest, see page 14.

3



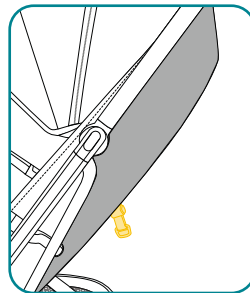
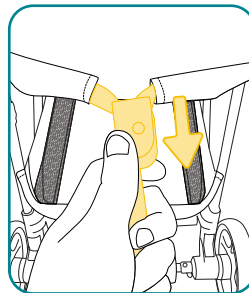
Unfasten the clip underneath the legrest.

**To convert the carriage back into seat mode:** Fasten the clips behind the seatback and legrest. Return the seat to an upright position.

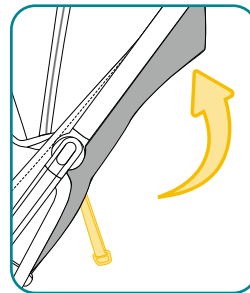
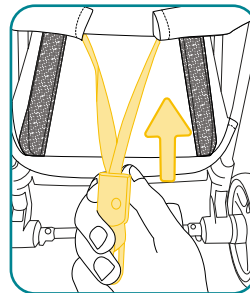


**To adjust the stroller seat position:** Press the round buttons on both sides of the stroller seat and rotate the seat up or down to the desired position.

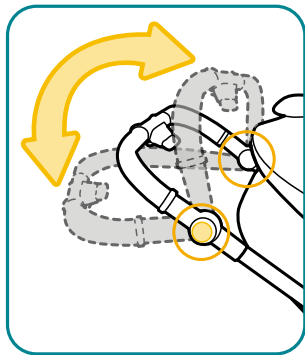
Use the recline strap on the back of the seat to move the seat up or down.



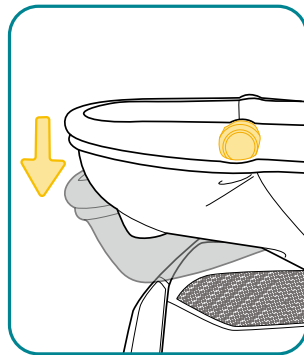
**To recline the seat:** While pressing the button on the recline strap, pull the strap back until the seat drops downward.



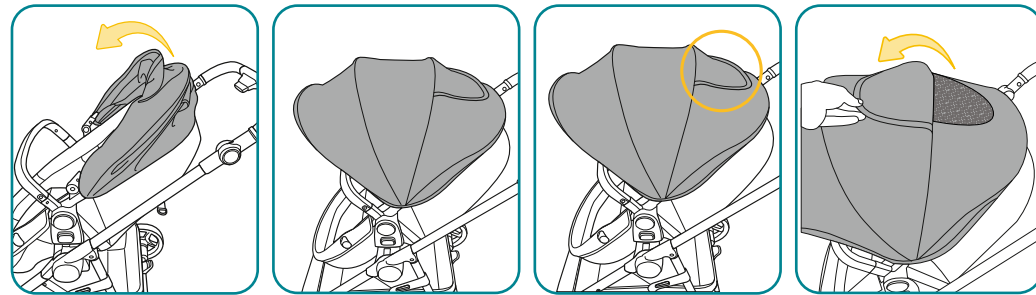
**To bring the seat upright:** While pressing the button on the recline strap, pull the strap and slide the button forward until the seat is fully upright.



Press the round buttons on both sides of the handlebar while moving it up or down to the desired position.

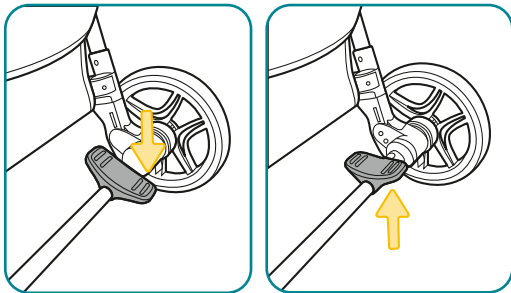


Press the round buttons on both sides of the legrest while moving it to the desired position.



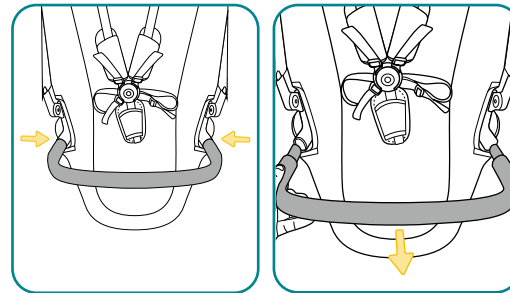
Extend the canopy by pulling it forward.

Lift the flap on top of the canopy to reveal a mesh screen.



**Always** use the parking brake when standing still, even if only for a few moments!

Step or press down on the lever near the rear wheel to lock the parking brake. Lift the lever up with your foot or hand to release the brake.



**To remove the bumper bar:** Press both release buttons on the sides of the bumper bar while pulling the bumper bar out from the stroller.

**To reinstall the bumper bar:** See page 8.

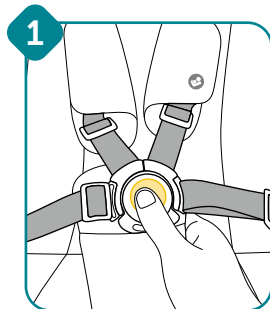
 **WARNING**

**ALWAYS** ensure bumper bar is in the upright locked position before using the stroller.

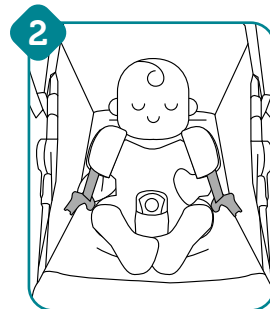


## ⚠️ WARNING

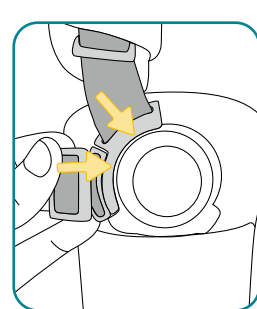
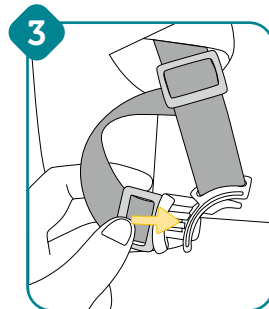
**AVOID SERIOUS INJURY** from falling or sliding out. **ALWAYS** use seat belt. Check frequently to make sure it is secure.



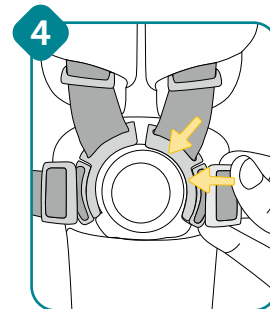
1 Unbuckle the harness by pressing the center button of the buckle.



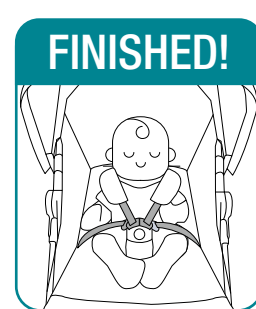
2 Place your child in the stroller seat with the buckle strap between their legs.



3 Fit the left buckle tongue into the top left buckle tongue. It will click into place. Hold them together and insert them into the left side of the buckle.

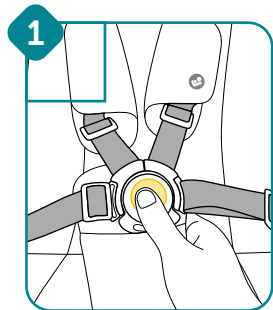


4 Repeat for the right and top right buckle tongues, inserting them into the right side of the buckle. Pull gently on the buckle to ensure it is secure and locked.

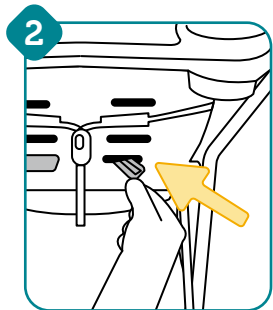


**FINISHED!**

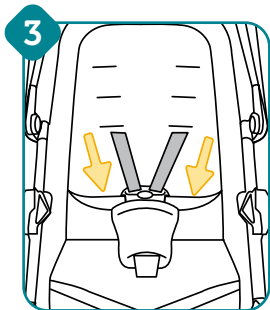
You may need to adjust the harness strap height to better fit your child.



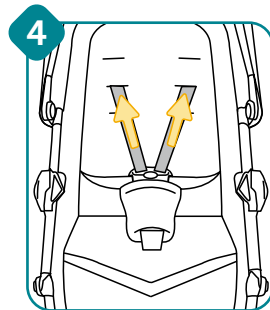
1 Unbuckle the harness.



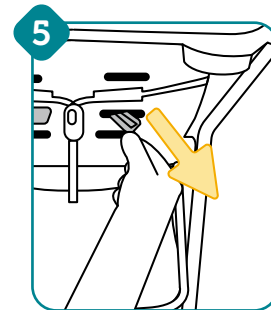
2 From the back of the stroller seat, push the harness strap retainers through the harness slots. You may have to turn the retainers sideways to fit them through the slots.



3 From the front of the stroller seat, pull the harness straps out of the harness slots.



4 Push the harness straps into the harness slots closest to your child's shoulders. You may have to turn the retainers sideways to fit them through the slots.



5 Pull the harness strap retainers through the harness slots on the other side of the seat.

**⚠ WARNING**

- Belts must be threaded exactly as shown.
- Failure to follow these instructions could result in serious injury or death of your child.

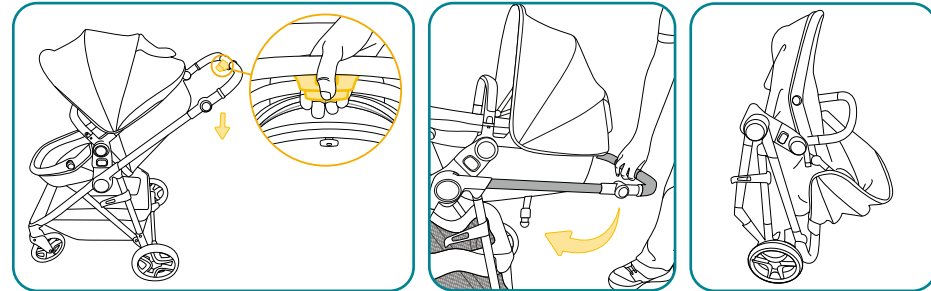


Before folding the stroller, ensure the parking brake is locked. See page 16 to use the parking brake.

When folding the stroller with the seat attached, the seat **MUST** be world-facing and **CANNOT** be in carriage mode.

 **WARNING**

**ALWAYS** keep fingers away from moving parts when folding, unfolding, or adjusting stroller to prevent finger entrapment.

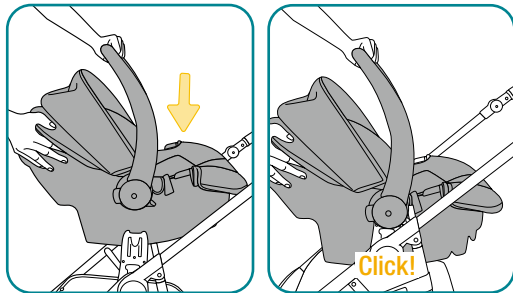


Squeeze the small frame fold release button and then squeeze the larger button. While squeezing both buttons with one hand, push down on the handlebar until the stroller folds into place. The frame lock on the side of the stroller will latch automatically.

**Note:** For the most compact fold, adjust the legrest all the way back.



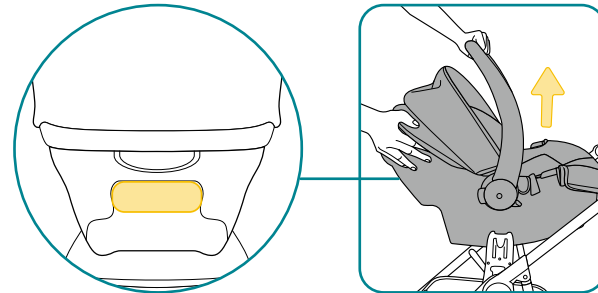
This stroller is compatible with the onBoard FLX Infant Car Seat. Before attaching a car seat to the stroller, you **MUST** remove the seat first. To remove the seat, see page 29.



**To attach the car seat to the stroller:** Remove the car seat from its base. See your car seat instruction manual for more details.

Lower the car seat onto the stroller's adapters until it clicks into place. Pull gently on the car seat to make sure it is attached securely.

The car seat can be installed parent-facing or world facing.



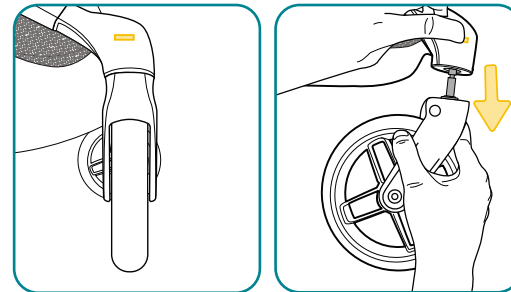
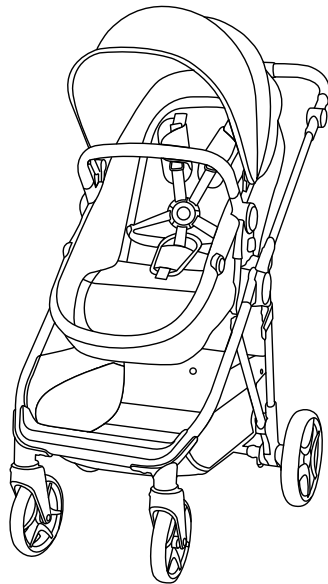
**To remove the car seat from the stroller:** Press and hold the car seat's release handle. While holding the release handle, lift the car seat up and off the stroller.

**DO NOT** place heavy objects on top of the stroller.

Clean dust and general stains on the cloth and frame of the stroller with a damp cloth and warm, soapy water.

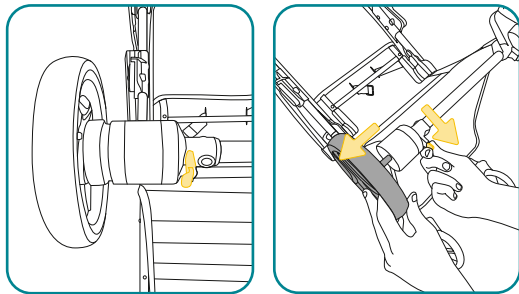
The harness covers can be machine washed with cold water on a gentle cycle. Tumble dry on low heat; do not iron or dry clean.

**DO NOT** machine wash any other stroller components.



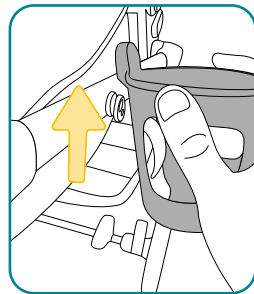
**To remove the front wheels:** Push in the release button located on the stroller frame just above the front wheel. While pushing in this button, pull the front wheel out from the stroller frame. Repeat for the other wheel.

To install the front wheels, see page 7.



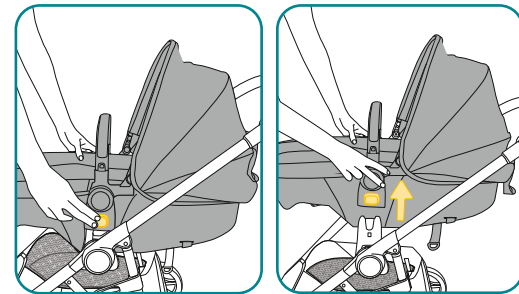
**To remove the rear wheels:** Locate the metal release levers where the rear wheels meet the stroller frame. While pulling the lever, pull the wheel out from the stroller frame. Repeat for the other wheel.

To install the rear wheels, see page 7.



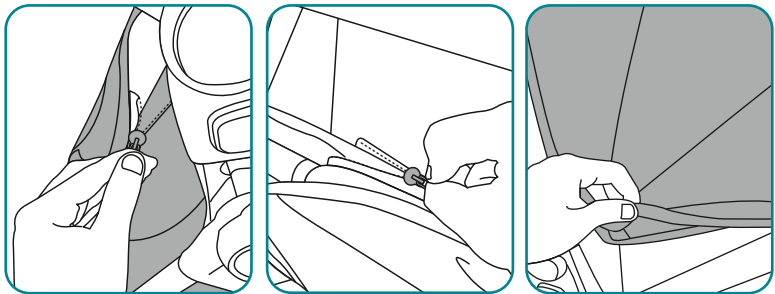
**To remove the cup holder:** Gently pull up on the cup holder until it detaches from notch on the stroller frame.

To install the cup holder, see page 9.



**To remove the seat:** Locate the seat's release buttons, below the seat's round adjustment buttons. While pressing in both release buttons, lift the stroller off the seat.

To install the seat, see page 9.



**To remove the seat covering:** Unzip the covering from the seat frame using the two zippers located at either end of the seat. Unfasten the canopy's hook-and-latch fasteners to detach the canopy from the seat covering. Once unzipped, the seat covering can be pulled off the seat frame. The seat covering can then be wiped clean.

**To put the seat covering onto the seat frame:** Pull the covering over the frame. Use the zippers to reattach.

### Replacement Parts

- Front Wheels (2)
- Rear Wheels (2)
- Harness Strap Covers (2)
- Cup Holder
- Bumper Bar

### Two-Year Limited Warranty

Dorel Juvenile Group, Inc. warrants to the original purchaser that this product (Grow and Go™ Sprint 6-in-1 Modular Travel System Featuring onBoard™ FLX Infant Car Seat), is free from material and workmanship defects when used under normal conditions for a period of two (2) years from the date of purchase. Should the product contain defects in material or workmanship Dorel Juvenile Group, Inc., will repair or replace the product, at our option, free of charge. Purchaser will be responsible for all costs associated with packaging and shipping the product to Dorel Juvenile Group Consumer Care Department at the address noted on the back of this document and all other freight or insurance costs associated with the return.

Dorel Juvenile Group will bear the cost of shipping the repaired or replaced product to the purchaser. Product should be returned in its original package accompanied by a proof of purchase, either a sales receipt or other proof that the product is within the warranty period. This warranty is void if the owner repairs or modifies the product or the product has been damaged as a result of misuse. This warranty excludes any liability other than that expressly stated previously, including but not limited to, any incidental or consequential damages. SOME STATES DO NOT ALLOW THE EXCLUSION OR LIMITATION OF INCIDENTAL OR CONSEQUENTIAL DAMAGES, SO THE ABOVE LIMITATION OR EXCLUSION MAY NOT APPLY TO YOU. THIS WARRANTY GIVES YOU SPECIFIC LEGAL RIGHTS, AND YOU MAY ALSO HAVE OTHER RIGHTS THAT MAY VARY FROM STATE TO STATE.