

- Notes:
- 1) Container Weight -- 100-130 grams
 - 2) Material -- HDPE
 - 3) Overflow Capacity -- 137.3 fl. oz. (@115 Grams)
 - 4) Fill Capacity -- 128 fl. oz.
 - 5) Tolerances Unless Specified:
 Vertical -- ±.080
 Horizontal -- ±.090
 Volumetric -- ±1.5 fl. oz.
 - 6) Samples to be checked Aged w/ 20 ° C water

DISCLAIMER

THIS INFORMATION IS PROVIDED AS A GENERAL GUIDE, INCLUDING DIMENSIONS. IT IS THE CUSTOMER'S RESPONSIBILITY TO SELECT THE PROPER CONTAINER FOR PRODUCT AND APPLICATION COMPATIBILITY.

DISTRIBUTED BY:



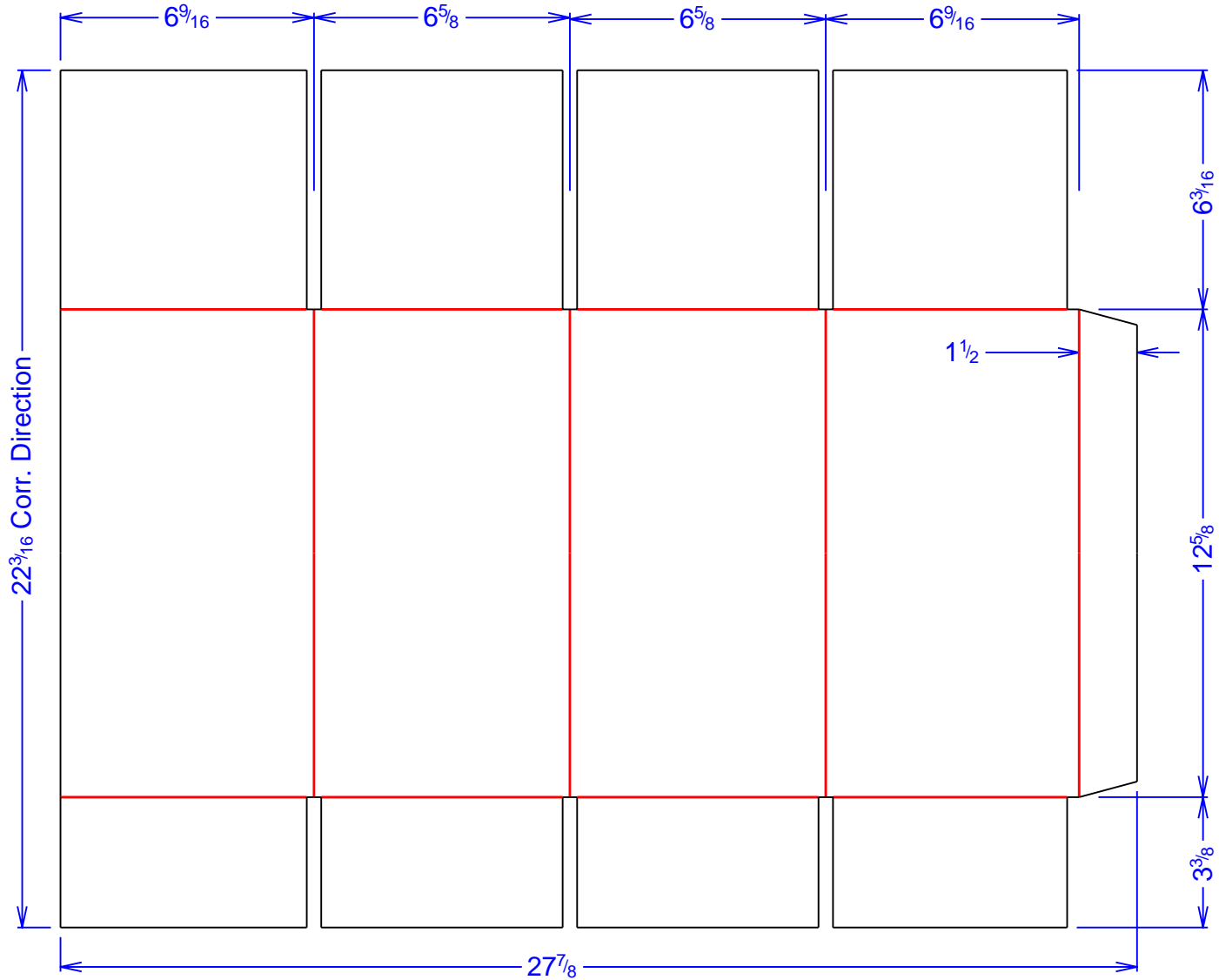
REF NO.:


DWG31565

DESCRIPTION:

1 x 1 Gallon Industrial Round Kit

Size: 6+1/4 x 6+1/4 x 12		Style: RSC		Board: 200 # BC	Board Color: Kraft
View: outside		Joint: Glue In		Sq. Footage: 4.29	
Blank Width: 22+3/16	Blank Length: 27+7/8	Cut Rule: 156.802		Vertical	
		Score Rule: 100+3/8			



<p align="center">DISCLAIMER</p> <p>THIS INFORMATION IS PROVIDED AS A GENERAL GUIDE, INCLUDING DIMENSIONS. IT IS THE CUSTOMER'S RESPONSIBILITY TO SELECT THE PROPER CONTAINER FOR PRODUCT AND APPLICATION COMPATIBILITY.</p>	<p>DISTRIBUTED BY:</p> 	<p>REF NO.:</p> <p>DWG31565</p>
	<p>DESCRIPTION:</p> <p align="center">1 x 1 Gallon Industrial Round Kit</p>	