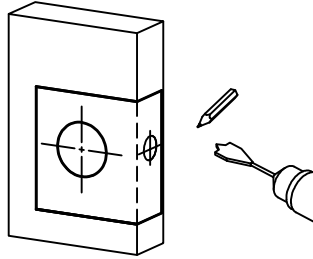




Cavity Door Lock Set Installation Instructions

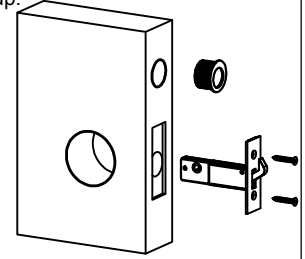
1. Positioning Template.

Position template on door at desired height. Folding template on the edge of the door (tape on if required to keep in place). Mark the position of the holes and the backset of the latch. Latch needs to be in the middle of the door. (refer Drawing)
Then drill a 54 mm hole for the handles and a 25 mm hole for the latch to go through the front of the door.



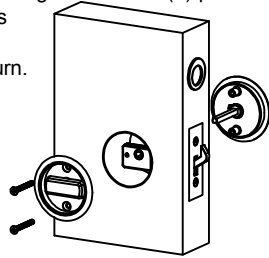
2. Installing latch.

After drilling the 25 mm hole in correct position. Chisel out the door for the face Plate. Checking that the Face Plate is flush with the face of the door. Insert the latch into the recessed hole and fix with screws provided. Ensuring that the hook is facing up.
Finger pull requires 25mm hole position if the centre of the door at desired height above latch.



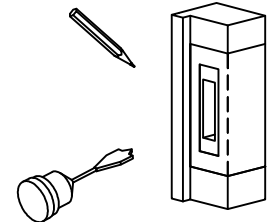
3. Assembling Handles.

For Privacy Latch position the Coin turn to the outside of the room. With the Spindel (2) in outside handle (1) push spindle into latch hole. Then position handle (3) onto spindle and using M4 Screws (4) provided attach to handle (1). Tighten so that handles are firm. Check that latch moves freely and adjust screw tightness if latch is difficult to turn.



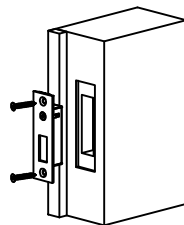
4. Positioning Striker.

Using Template mark the position of the Striker so that the bottom of the striker and the bottom of the Latch line up. Drill and Chisel out the cutting for the Strikers insuring that the striker face is flush with the surface.



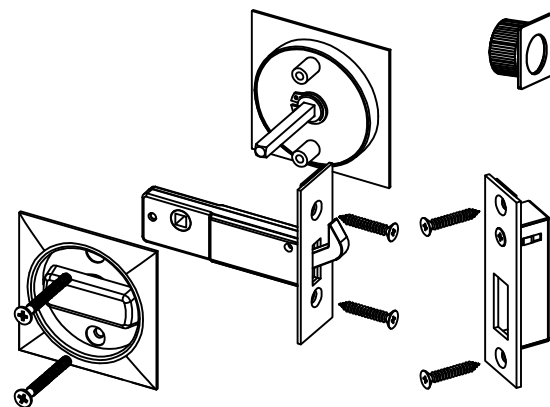
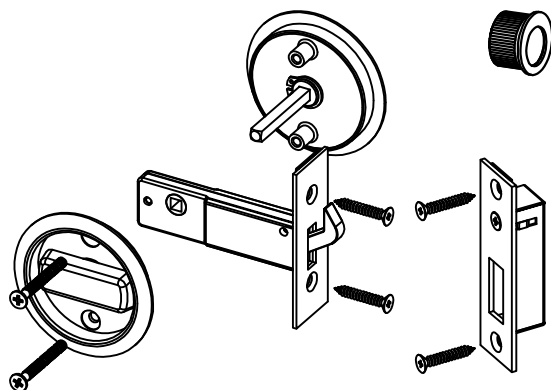
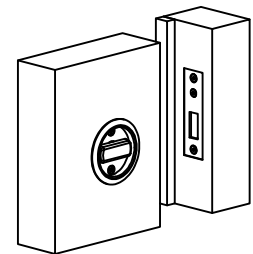
5. Installing Striker.

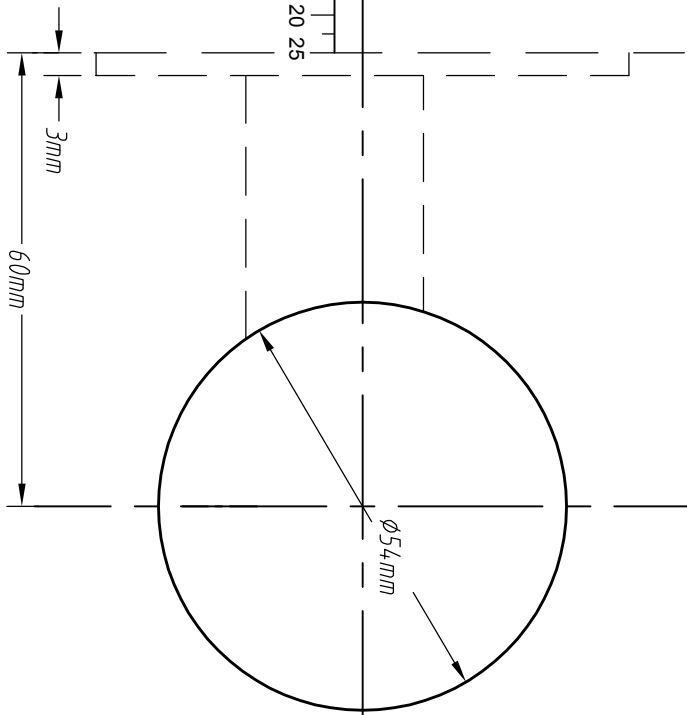
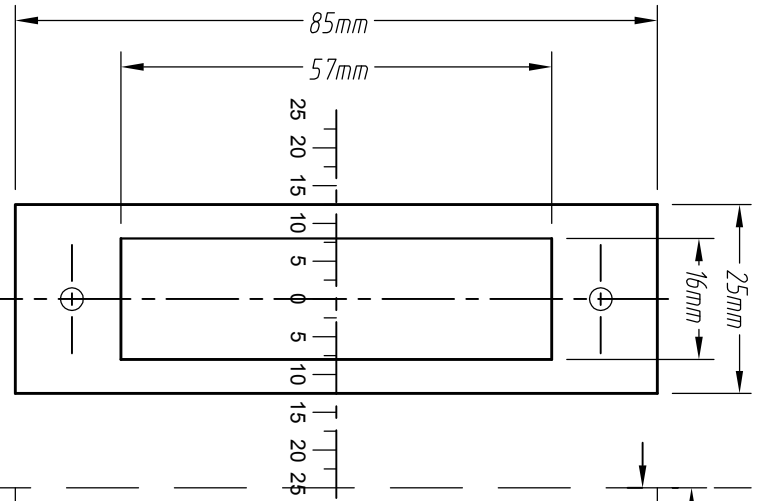
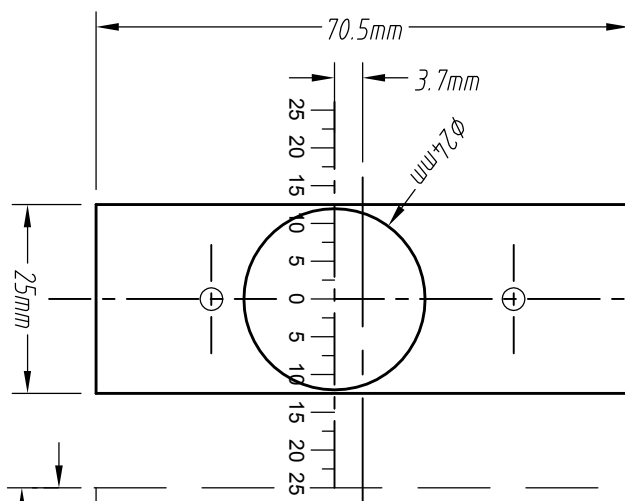
Insert striker (8) into the cut out and fix into place with screws provided (10).



6. Checking alignment.

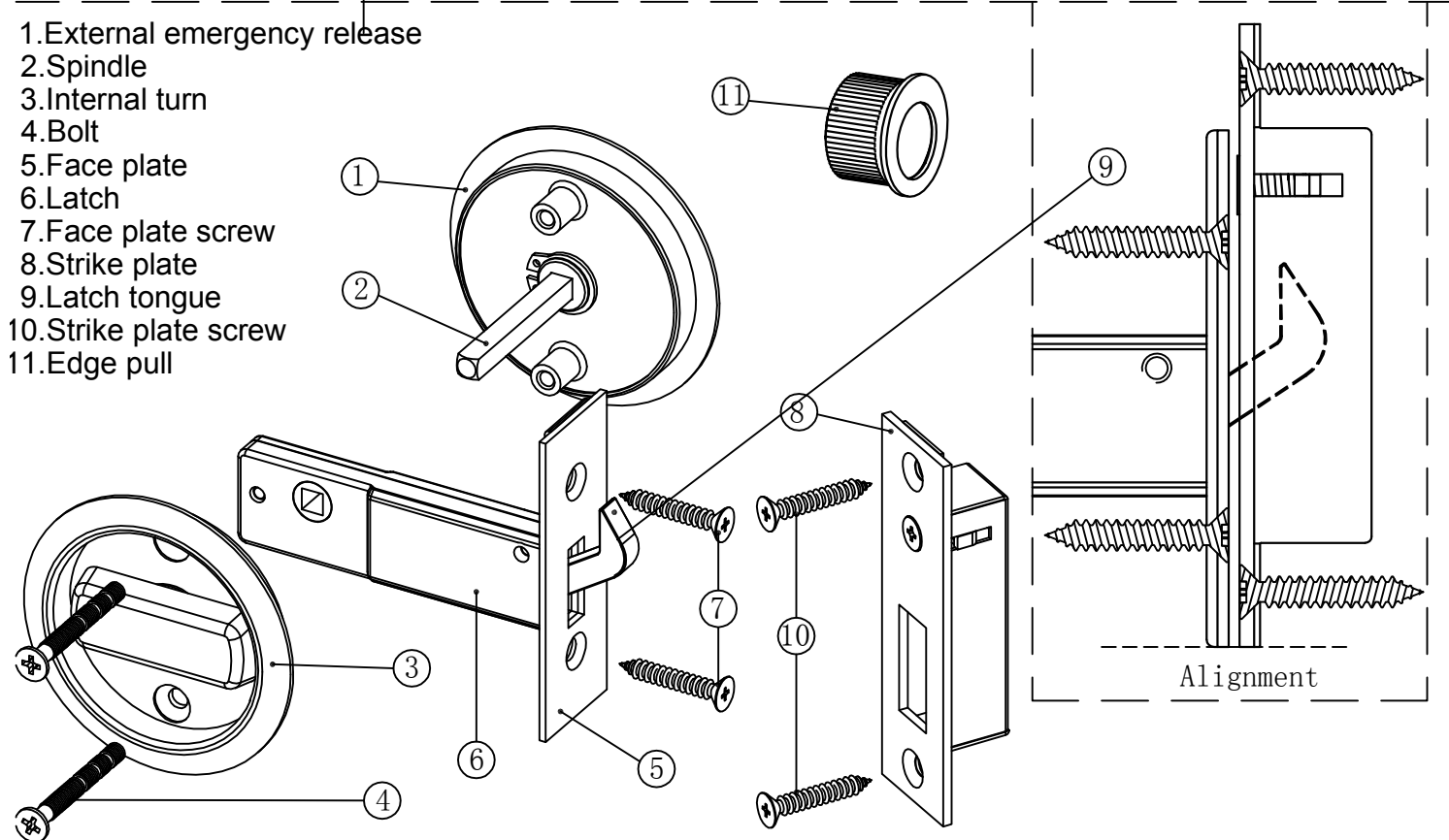
With both fittings fitted to the door and Jamb check the action and gap between striker and latch. If it is too great, then using adjustment screw (11) tighten or loosen depending on the desired gap required.





Cavity units template

Strike plate template



- 1.External emergency release
- 2.Spindle
- 3.Internal turn
- 4.Bolt
- 5.Face plate
- 6.Latch
- 7.Face plate screw
- 8.Strike plate
- 9.Latch tongue
- 10.Strike plate screw
- 11.Edge pull



Allegion (New Zealand) Limited
Phone 0800 477 869
Website www.allegion.co.nz

Allegion (Australia) Pty Ltd
Phone 1800 098 094
Website www.allegion.com.au