

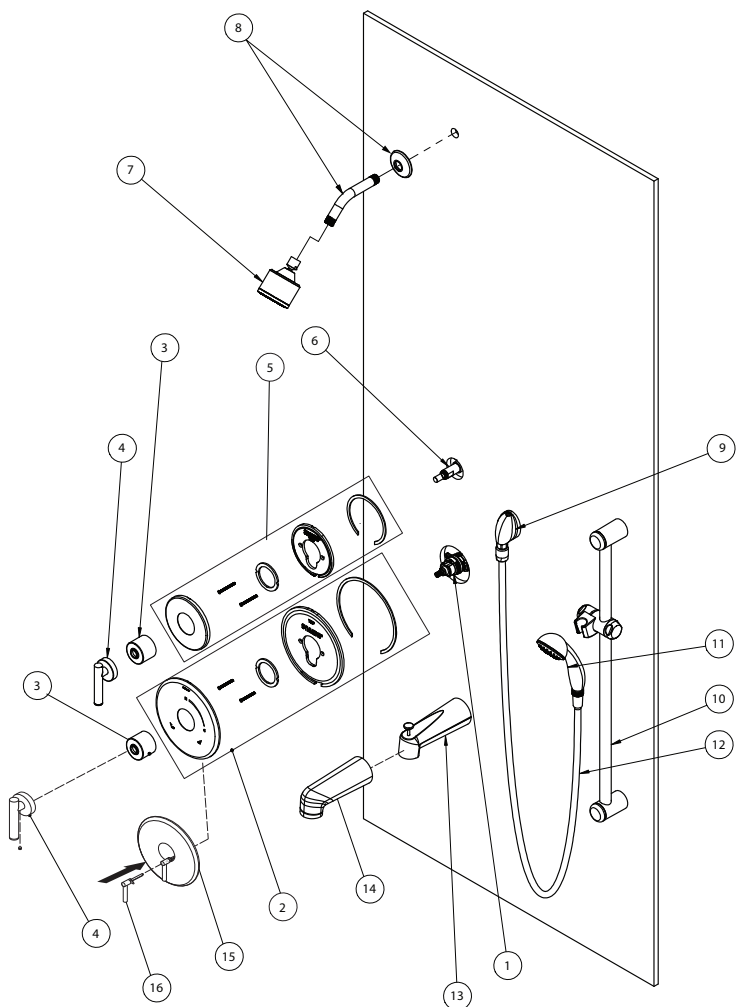


Parts Breakdown Document

Model Numbers

- 3500:** Dia Shower Valve Trim, Valve only
- 3501:** Dia Shower Valve Trim, with Showerhead
- 3502:** Dia Tub/Shower Trim, with Showerhead
- 3503:** Dia Shower Trim, with Hand Shower System
- 3504:** Dia Tub/Shower Trim, with Hand Shower System and Tub Spout
- 3505:** Dia Shower Trim, with Diverter Trim, Showerhead, and Hand Shower System
- 3506:** Dia Tub/Shower Trim, with Diverter Trim, Tub Spout, Showerhead, and Hand Shower System
- S3500:** Dia Shower Valve Trim, Valve only with Diverter Lever
- S3501:** Dia Shower Trim, with Showerhead and Diverter Lever
- S3502:** Dia Tub/Shower Trim, with Showerhead and Diverter Lever
- S3503:** Dia Shower Trim, with Hand Shower System and Diverter Lever
- S3504:** Dia Tub/Shower Trim, with Hand Shower System, Diverter Lever, and Tub Spout
- S3505:** Dia Shower Trim, with Showerhead, Diverter Lever, and Hand Shower System
- S3506:** Dia Tub/Shower Trim with Diverter Lever, Showerhead, Hand Shower System, and Tub Spout
- S3508:** Dia Shower Trim with Diverter Lever, Shower head, and Hand Shower System

Parts Breakdown



#	Description	Part Number
1	Temptrol shower valve	TA-10
2	Circle escutcheon kit Circle escutcheon kit (Plastic)	RTS-009* RTS-010*
3	Dome, cover	T-19*
4	Diverter Handle, lever	T-242A*
5	Diverter escutcheon kit	RTS-041*
6	Diverter Assembly, 4 port	3DIVBODYSRT (3DIVBODYSRTNS for California)
	Diverter Assembly, 3 port	2DIVBODYSRT (2DIVBODYSRTNS for California)
7	Showerhead, single mode, Dia	352SH*
8	Shower arm	300S*
9	Elbow, type 2 drop	EF-105*
10	Assembly, slide bar, 30"	RA-009*
11	Hand shower	EF-100*
12	Hose 5'	EF-104*
13	Diverter tub spout (thread on)	352TS*
14	Tub spout (thread on)	067*
15	S Valve Escutcheon Kit S Valve Escutcheon Kit (Plastic)	RTS-011* RTS-012*
16	Diverter Lever	RTS-013*

*If finish is OTHER than chrome, part requires finish modifier

Finish Modifiers:

- BBZ - Brushed Bronze finish
- MB - Matte Black finish
- STN - Satin Nickel finish