

Specifications

UL: Suitable for wet locations.

LEDs: 6W multi-chip, long-life LEDs

Lifespan: 100,000-hour LED lifespan based on IES LM-80 results and TM-21 calculations

12W Driver: Constant Current, Class 2, 100-277V, 50/60HZ, 4 kV Surge Protection, 100-240VAC: 0.3 - 0.15 A, 277VAC: 0.3 A

18W Driver: Constant Current, Class 2, 100-277V, 50/60HZ, 6kV Surge Protection, 700mA, 100-277VAC: 0.4A

24W Driver: Two 12W drivers

Backup Battery: Field-replaceable, maintenance-free, nickel-cadmium battery with minimum start temperature of 0°C/32°F or -20°C/-4°F. (for 18W and 24W only)

	Round	Square
Input Watts @ 120VAC	31.2	31.7
Output Lumens*	1652	1430
Lumens per Watt*	52.9	45.1
Color Accuracy (CRI)*	69	69
Correlated Color Temp. (Nominal CCT)*	5000K	5000K

Cold Weather Starting: Minimum starting temperature is -40°F / -40°C

Ambient Temperature: Suitable for use in 40°C (104°F)

Housing: Die-cast aluminum with extruded aluminum bollard shaft

Lens: Clear, vandal-resistant polycarbonate

Reflector: Specular polycarbonate

Gaskets: High-temperature silicone gaskets seal out moisture

Mounting: Four (4) anchor bolts provided for concrete pad mounting. Internal base support has leveling screws. **Sconces:** Die-cast aluminum wall bracket with five 1/2" conduit openings with plugs.

Finish: Our environmentally friendly polyester powder coatings are formulated for high-durability and long-lasting color, and contain no VOC or toxic heavy metals.

Color Stability: RAB LED color stability is measured based on LM-80 testing and is available upon request.

Green Technology: Mercury and UV free, and RoHS compliant. Polyester powder coat finish formulated without the use of VOC or toxic heavy metals.

IESNA LM-79 & LM-80 Testing: RAB LED luminaires have been tested by an independent laboratory in accordance with IESNA LM-79 and LM-80, and have received the Department of Energy "Lighting Facts" label.

Title 24: BLED complies with 2013 California Title 24 building and electrical codes as a commercial outdoor non-pole-mounted fixture < 30 Watts when used with a photosensor control. Select catalog number PCS900(120V) or PCS900/277 to order a photosensor.

Patents: The designs of the BLED® and WBLED™ are protected by patents pending in US, Canada, China, Taiwan and Mexico.

*Values shown for cool temperature. Visit rabweb.com for neutral and warm.

Ordering Information

Product Family	Shape	Wattage	Color Temp	Finish	Options
BLED					
Blank	Square	12 12W	Blank 5000K	Blank Bronze	/E Battery Backup†
R	Round	18 18W	N 4000K	W White	Min. Start. Temp. 0°C/32°F
		24 24W	Y 3000K		/EC Battery Backup†
					Min. Start. Temp. -20°C/-4°F

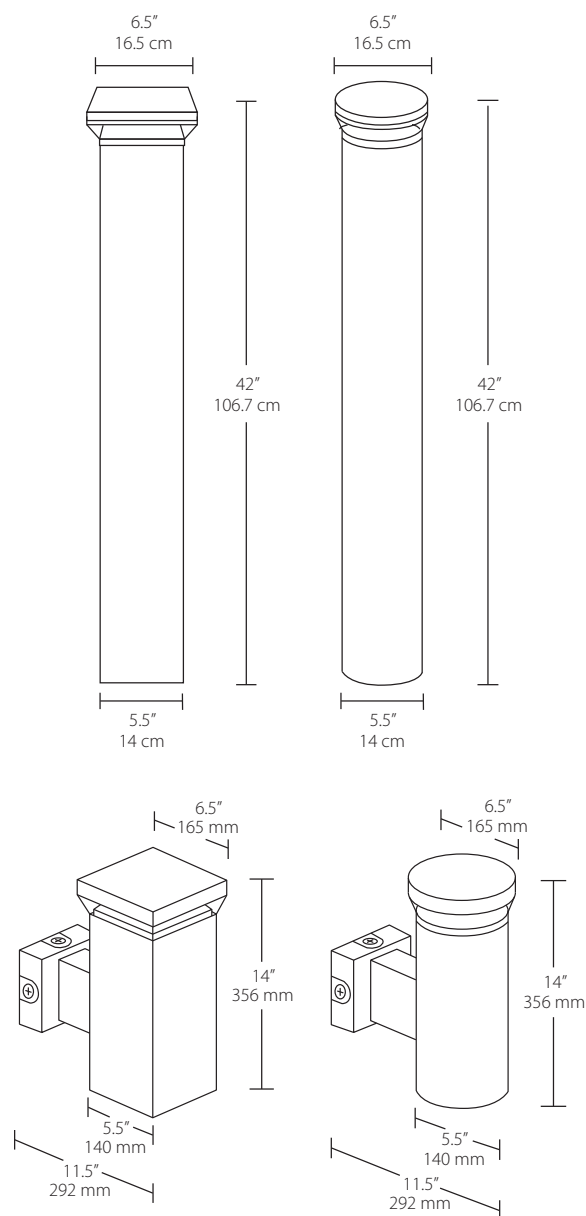
†Emergency backup option available for 18W and 24W only.

Dimensions & Weight

Weight:

Square Bollard: 21.8 lbs. Round Bollard: 18.6 lbs.

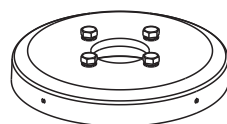
Square Sconce: 13.1 lbs. Round Sconce: 11.4 lbs.



Accessories

BOLBASE24 RETRO

Retrofit base for mounting to existing installations



BLED12, BLED18, BLEDR12, BLEDR18, BLED24 (cool versions only)

Stands up to unnecessary roughness

Architectural quality and strength at an affordable price point.

BLED® BOLLARDS
12W 18W 24W



RAB
LIGHTING
RABWEB.COM • 888 722-1000

12/18/24W LED BOLLARDS

- Patent-pending base mount design for super sturdy installation

- Durable construction and vandal-resistant polycarbonate lens

- Clean, elegant design available in round or square, and bronze or white

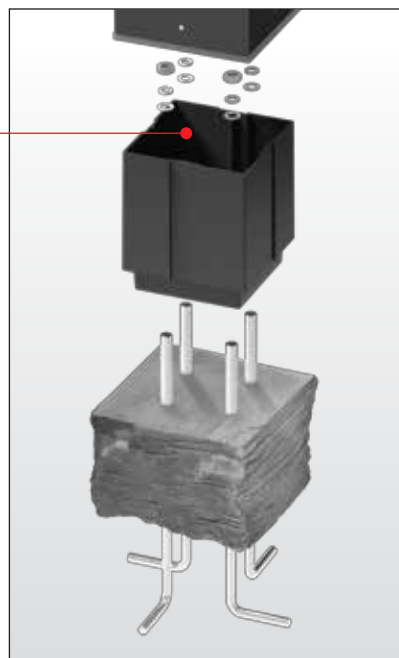
- Precision-engineered optics deliver maximum downward lighting without glare

- Available in 3 configurations to provide 360°, 270° or 180° lighting pattern

- Optional battery backup available (18W and 24W only)

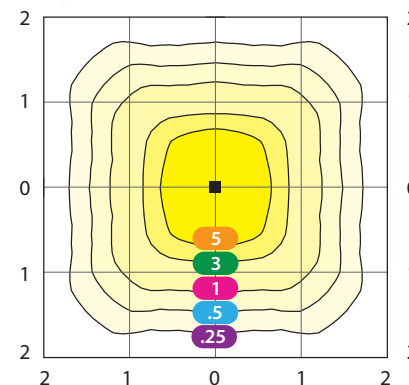
- Four leveling screws provided in base mount for easy installation

- 100,000-Hour LED lifespan



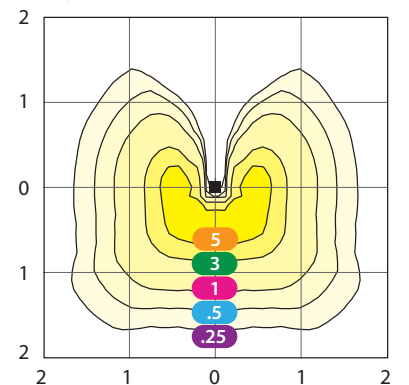
Photometrics

BLED24
(Square bollard, 4 LEDs @ 90°, 5000K)



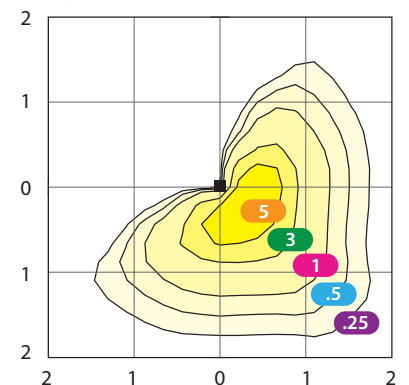
Photometric Report #ITL78069

BLED18
(Square bollard, 3 LEDs @ 90°, 5000K)



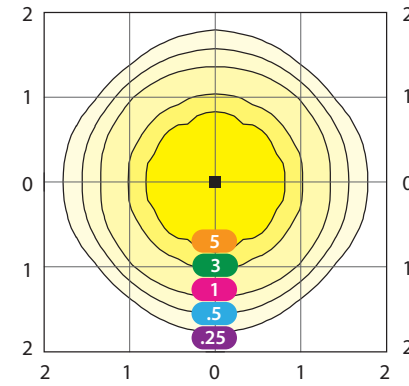
Photometric Report #ITL78057

BLED12
(Square bollard, 2 LEDs @ 90°, 5000K)



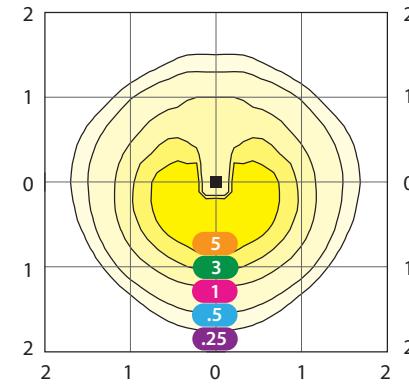
Photometric Report #ITL78081

BLEDR24
(Round bollard, 4 LEDs @ 90°, 5000K)



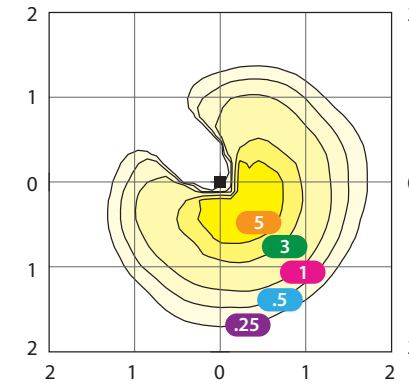
Photometric Report #ITL78072

BLEDR18
(Round bollard, 3 LEDs @ 90°, 5000K)



Photometric Report #ITL78060

BLEDR12
(Round bollard, 2 LEDs @ 90°, 5000K)



Photometric Report #ITL78084

Multiples of Fixture Height (42") • Values shown in Footcandles

Companion Architectural Sconces

WBLED18



WBLEDR18



WBLED18W



WBLEDR18W

