

WINTER

CATALOG 2026 ESSENTIALS

**HUNDREDS
OF UNIQUE TOOLS.**

Find your nearest American
Producers by scanning the QR!



**TruMelt 3% Magnesium
Pallet Ice Melter TM3
(.1109190)**



**SAY NO TO SNOW
THIS WINTER!**

**TruMelt Halite Ice Melter
TMH50 (.1104612)**



VALID JANUARY - MARCH 2026

**AMERICAN
PRODUCERS SUPPLY**

TABLE OF CONTENTS

TABLE OF CONTENTS

3M Tapes & Adhesives	1
Abrasives	2-4
Concrete Supplies	5-6
Construction Supplies	7-13
Cutting Tools	14-17
Electrician's Tools	18-21
Fall Protection	22-23
Hand Tools	24-26
Janitorial	27-30
Jobsite Storage	31
Ladders	32
Lifting & Rigging	33-34
Lighting	35
Pipe Working Tools	36-37
Power Tools	38-46
Safety & PPE	47-48
Closeouts	48-50
Other Services	51

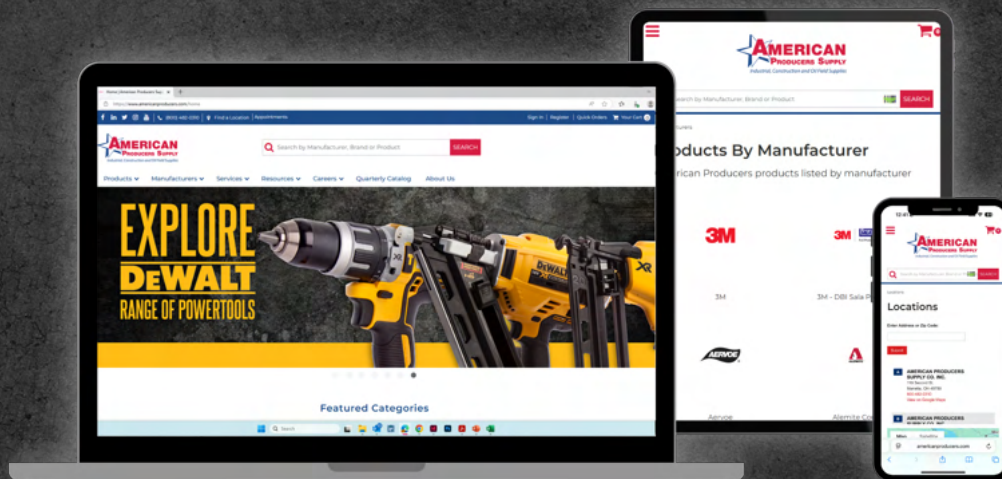
*** Prices effective through 12/31/2025. Subject to availability. Prices subject to change without notice. Freight charges may apply. American Producers Supply is not responsible for errors or omissions. ***



FIND YOUR TOOL. UNLOCK YOUR POTENTIAL.

At American Producers Supply, we're dedicated to helping you discover the perfect tools for every job. Our comprehensive range of tools ensure you can tackle any project with confidence. From precision instruments to heavy-duty equipment, each item is carefully selected to meet your highest standards.

Explore our catalog today and empower yourself with the tools you need to succeed.



Visit our website at www.americanproducers.com

WE ARE AN AUTHORIZED SERVICE CENTER FOR:



3M Tapes & Adhesives



2x60 Masking Tape

2307 (.69340)

- Ideal for woodworking and general paint masking
- Offers broad tack and moderate adhesion
- Retains clean removal on most surfaces after baking for 30 minutes up to 200 °F (93 °C)



All Purpose Duct Tape Silver

DT8 (.881123)

- Aggressive natural and synthetic rubber blend of adhesives provides instant adhesion to a wide variety of surfaces, including metal, glass, plastic and sealed concrete
- Great for patching, light duty bundling, reinforcing, metal splicing, labeling, and more



Super Duty Duct Tape Black

DT17 (.906512)

- Black duct tape with ultra-thick backing for the high-tensile strength to tackle aggressive, demanding jobs
- Water-resistant backing resists abrasion and wear while offering an easy tear and good comfortability
- Natural rubber adhesive grips instantly to a wide variety of surfaces, including metal, glass, plastic and sealed concrete



Super 77 Spray Adhesive

97956 (.834731)

- Offers a fast, medium-strength initial grab for a quick bond
- Features sufficient open time to properly position and bond materials
- Bonds paper, corrugated board, fabric, foam, wood, and more
- Supports low soak-in to help provide high coverage and soft, non-dimpling adhesive lines



Clear Box Sealing Tape

371 (.52210)

- BOPP film carton sealing industrial packaging tape used for box sealing, splicing, recoupage, and other packaging applications
- The adhesive provides a high strength, tamper-proof seal to keep the tape in tact even during rough weather



Multi-Purpose 27 Spray Adhesive

7832 (.761475)

- This product is designed exclusively for industrial applications
- Offers 30 seconds to 15 minutes of working time
- Provides industrial-strength bonding at an economical price
- Offers a fast, aggressive tack for a quick bond
- Bonds a wide range of lightweight materials, including paper, corrugated board, fabric, insulation, plastic, metal, and more



Heavy Duty Duct Tape Silver

DT11 (.886323)

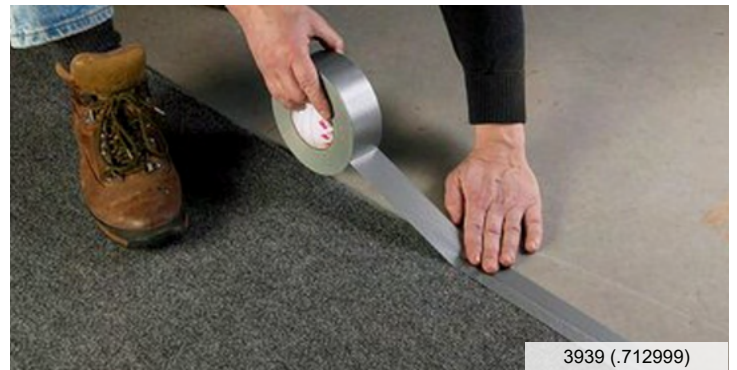
- Resists curling, tears cleanly off the roll and has strong holding power for hard-to-bond surfaces
- Sticks immediately and stays on irregular surfaces without lifting, even plastics
- Water-resistant polyethylene film backing resists wear and light abrasion



Heavy Duty Duct Tape Silver

3939 (.712999)

- Designed for use in heavy-duty maintenance, repair, and construction applications
- Cleanly peels off of opaque, non-glass, indoor surfaces for up to one month
- The adhesive bonds immediately and holds for up to one year indoors without deterioration



Super 33+ Vinyl Black Electrical Tape

29035 (.10944)

- Combination of the pressure-sensitive, rubber-resin adhesive and PVC backing
- Resists UV rays, abrasion, moisture, alkalis, solvents and acids
- Flame-retardant and inhibits the corrosion of electrical conductors





Depressed Center Grinding Wheel

- Fast cutting, long lasting wheels that are ideal for heavy weld removal and other heavy-duty grinding applications
- Contain 3M's newly engineered precision-shaped grain designed to deliver an unbeatable combination of performance and value



Catalog/Part #	Diameter	RPM	Qty/Box
87453 (.940534)	4½" x ¼" x 7/8"	13,300	10
87450 (.940543)	6" x ¼" x 7/8"	10,200	10
87451 (.940549)	7" x ¼" x 7/8"	8,500	10

Cubitron III T1 Cut-Off Wheel

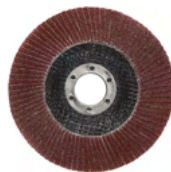
- Creates perpendicular cuts using the outer edge of the wheel, making them ideal for cutting through metal, including autobody or marine sheet metal, stainless steel tubing, exhaust pipes, clamps, rusted fasteners, and more



Catalog/Part #	Diameter	RPM
90036 (.810631)	4½" x 1/4" x 7/8"	13,300
90038 (.810360)	6" x 1/4" x 7/8"	10,200

4-1/2" Type 27 Cubitron II Flap Disc

- 3M™ precision shaped grain maintains sharp points that cut exceptionally fast with less pressure
- Engineered to run cooler, reducing metal discoloration/oxidation and the chance of heat related stress cracks



Catalog/Part #	Type	Grit	RPM
55605 (.823074)	27	40	13,300
55606 (.823452)	27	60	13,300

Cubitron III T27 Depression Center Grinding Wheel

- Designed for heavy weld removal and other heavy-duty grinding applications on almost all materials
- Delivers up to 15% increased cut rate compared to 3M™ Cubitron™ II Performance Abrasives to help reduce the amount of time and pressure required to get the job done



Catalog/Part #	Diameter	Max RPM	Qty/Box
90002 (.810305)	4½" x ¼" x 5/8"	13,300	10
90005 (.810348)	6" x ¼" x 5/8"	10,200	10

Silver Cut-Off Wheel

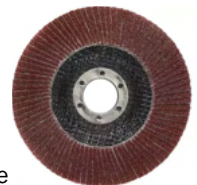
- Composed of fiberglass-reinforced ceramic abrasive
- High-density grain that prevent loadings and keeps surface temperatures down when working with heat-sensitive materials such as stainless steel and aluminum



Catalog/Part #	Diameter	RPM	Qty/Box
87465 (.940553)	4½" x .045" x 7/8"	13,300	25
87469 (.940555)	6" x .045" x 7/8"	10,200	25

4-1/2" Type 29 Cubitron II Flap Disc

- 3M™ precision shaped grain maintains sharp points that cut exceptionally fast with less pressure
- Engineered to run cooler, reducing metal discoloration/oxidation and the chance of heat related stress cracks
- Durable Y-weight poly cotton backing delivers controlled, even wear for full use of the disc on low to medium high pressure applications



Catalog/Part #	Type	Grit	RPM
55623 (.826375)	29	40	13,300
55625 (.825982)	29	80	13,300

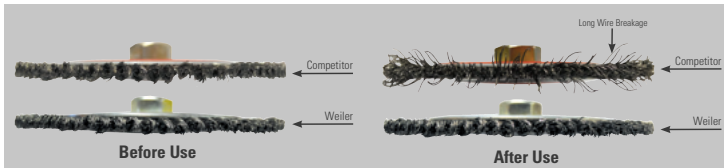




Roughneck Wire Wheel



- 25% more wire per tuft increases brush life
- Heat-treated U.S.A. wire for maximum toughness
- “Trimmed” sharp knot ends clean over 50% faster and that means maximum cleaning from the start
- Rigid side plate construction stops knot movement for better balance and less vibration



Catalog/Part #	Diameter	Arbor	Max RPM
13232 (.808515)	4-1/2"	5/8-11	15,000
09400 (.808722)	6"	5/8-11	12,500
090000 (.802549)	6-7/8"	5/8-11	9,000

Wolverine Fast Cutting Wheel

- New ceramic grain technology increases cut rate while working at cooler temperatures for greater efficiency
- Optimum Use Line helps maximize wheel life, improving productivity and sustainability



Catalog/Part #	Diameter	Type	Grit	Max RPM
56281 (.997092)	4-1/2"	1	60	13,300
56273 (.1033518)	6"	1	60	10,200

Tiger Abrasive Flap Disc

- Aluminum backing provides support for maximum aggression and is recyclable
- Best on carbon steel, structural steel, stainless steel, and cast iron
- Contaminant-free (contains less than 0.1% Fe, S, Cl)



Catalog/Part #	Diameter	Type	Grit	Max RPM
50519 (.808171)	4-1/2"	29	60	13,000
50520 (.696467)	4-1/2"	29	80	13,000
50544 (.808166)	7"	29	60	8,600
50545 (.837006)	7"	29	80	8,600

Tiger Ceramic Cutting Wheel

- New ceramic grain technology increases cut rate while working at cooler temperatures for greater efficiency
- Optimum Use Line helps maximize wheel life, improving productivity and sustainability



Catalog/Part #	Diameter	Type	Grit	Max RPM
58305 (.1124914)	4-1/2"	27	60	13,300
58309 (.1123847)	6"	27	60	10,200

Z30T Tiger Pipeline Grinding Wheel

- Operators will no longer feel the need to chip the wheel to get it to bite
- One wheel designed for bead grinding, angle grinding, or facing the land
- A blend of zirconia alumina and ceramic grains bite into the bead and dig out the wagon tracks fast while the strong bond delivers long wheel life



Catalog/Part #	Diameter	Grit	Max RPM
58090 (.1071202)	4-1/2"	30	13,300
58092 (.1137824)	6"	30	10,200
58094 (.1058164)	7"	30	8,500
58095 (.1041767)	9"	30	6,600

PIPELINE APPROVED

GRINDING WHEELS

RIGHT OF WAY

FAB YARD

MRO MAINTENANCE & REPAIR

BEAD GRINDING, TRANSITIONS, FACING THE LAND

58090 (.1071202)



SAIT Pro Metal Portable Saw Wheel

24140 (.780154) 14 x 1/8 x 20mm

- Aluminum oxide grain
- Best value for a fast cut



A36T Type 1 Thin High Speed Cut-Off Wheel

- Aluminium oxide grain
- Hard bond for aggressive cutting on rough applications



Catalog/Part #	Diameter	Arbor	Thickness	RPM
23040 (.54885)	3"	3/8"	1/16"	25,000
23050 (.54986)	3"	3/8"	.035"	25,000
23069 (.56059)	4"	3/8"	.035"	19,000

A24R Long Life Grinding Wheel

- Type 27 aluminium oxide grain
- Longer life for fewer wheel changes



Catalog/Part #	Diameter	Arbor	Thickness	Max RPM
20063 (.9056)	4 1/2"	7/8"	1/4"	13,300
20079 (.110075)	6"	7/8"	1/4"	10,200
20090 (.55634)	9"	7/8"	1/4"	6,600



Aluminum Oxide Fiber Disc

- High-quality aluminum oxide grain, open coat
- Economical choice for general grinding



Catalog/Part #	Diameter	Arbor	Grit	Max RPM
52460 (.49478)	4 1/2"	7/8"	60	13,300
52716 (.50130)	7"	7/8"	16	8,500
52724 (.51047)	7"	7/8"	24	8,500

A24R Pipeline Grinding General Purpose Wheel

- Aluminium oxide grain
- Designed and manufactured to perform both cutting and light grinding



Catalog/Part #	Diameter	Arbor	Thickness	RPM
22030 (.54884)	4 1/2"	7/8"	1/8"	13,300
22042 (.130589)	6"	7/8"	1/8"	10,200
22065 (.324803)	9"	7/8"	1/8"	6,600

A60S General Purpose Cut-Off Wheel

- Special aluminium oxide grain
- Exceptional performance
- Extremely fast burr-free cutting with long life



Catalog/Part #	Diameter	Arbor	Thickness	Type	RPM
22021 (.69356)	4 1/2"	7/8"	.045"	27	13,300
22047 (.137392)	6"	7/8"	.045"	27	10,200
23101 (.100008)	4 1/2"	7/8"	.045"	1	13,300
23106 (.130590)	6"	7/8"	.045"	1	10,200

A24N Grinding Wheel

- Aluminum oxide grain
- Soft bond for fast stock removal



Catalog/Part #	Diameter	Arbor	Thickness	Max RPM
20060 (.55376)	4 1/2"	7/8"	1/4"	13,300
20070 (.55475)	5"	7/8"	1/4"	12,200
20078 (.698386)	6"	7/8"	1/4"	10,200

Concrete Supplies



X-Tra Plus Red Diamond Blade

Catalog/Part #	Size
53717 (.1081412)	12" x .125 x UNV
53725 (.751159)	14" x .125 x UNV
75606 (.846881)	16" x .125 x UNV
15713 (.1017548)	18" x .125 x 1"
11802 (.1081415)	20" x .125 x 1"



- Higher quality diamond and long cutting life
- Diamond depth of .250" (6mm) - Segment height of .350" (9mm)

SPECIAL ORDER ONLY!

Heavy Duty MAXX High-Speed General Purpose Diamond Saw Blade

Catalog/Part #	Size
53734 (.131811)	12" x .125 x UNV
53742 (.87377)	14" x .125 x UNV
90185 (.766008)	16" x .125 x UNV



- Heat isolation slots in segment for better cooling and faster cut
- Diamond depth of Diamond depth of .295" (7mm) - Segment height of .395" (10mm)

CCE0900 Portable Walk-Behind Saw

30396 (.1015645)

- Heavy-duty design but light enough for two people to lift
- Honda GX390 - 11.7 HP with cyclone air filter
- Built-in depth indicator



Guardian C/A-34GD Combo Blade

- D11030 (.789107) 12"
- D11031 (.788901) 14"
- D11032 (.797442) 16"
- D11033 (.789037) 18"



- Wet/Dry Use
- .512" Segment Height for long life
- Cooling holes in the core promote cooling when dry sawing
- Undercut Protection

General Purpose Diamond Blade

- D70012 (.807218) 12"
- D70016 (.807215) 14"

- For cutting, masonry and stone, asphalt and concrete
- Wet or dry use



14" General Purpose Diamond Blade

D70094-1 (.836140)

(Wet/Dry) Size: 14" x .125" x 1"-20mm
Universal: Segmented - Premium

Use for fast cutting at low initial cost on a wide variety of materials including: concrete, stone, masonry and more.



C-34AX Series Arix Dry Concrete Core Bits

- Drills quazite underground enclosures with ease
- Turbo segments for faster drilling



CALL FOR SIZES & PRICING!



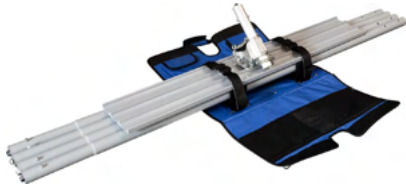
C-34AX



Finisher's Tote

BFKIT16 (.1094498)

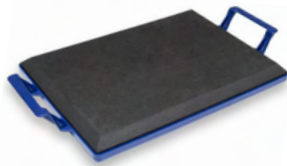
- Open ended with bracket window to fit any length pole, bull float, or fresno
- Made of double layer, durable, water-resistant nylon with a rigid reinforced base and stiffened side panels
- Specially designed reinforced nylon pole retainers will accept any 1 3/8" (35mm), 1 3/4" (44mm) bull float handles, or MARSHALLTOWN Octagon Handles
- Outside cinching straps are perfect for holding 4' levels, darbies, long trowels, and brooms



Kneeler Board

16451 (.888537)

- Comes with extra-large handle grips
- The padded area is 19 x 13½-inch
- Black foam pad fastened to a polypropylene tray



16451 (.888537)

Monster Pry Bar

16595 (.771368)

- 56" (1422 mm) length
- Powder-coated finish
- Long-lasting, all-steel construction
- Ideal for prying loose concrete forms and other embedded objects
- Features a 56" length, all-steel construction with a powder-coated finish that offers you the best leverage possible for prying concrete forms and other embedded objects. This tool is Made in the USA with Global Materials



16595 (.771368)

60" Aluminum Econo Crete w/ Wood Handle

24847 (.808927)

- Aluminum blade material
- Pick to have a hook or no hook design
- Made in the USA with Global Materials



Construction Supplies



RAZORBACK®
PROFESSIONAL TOOLS

Sledge Hammer

Perfect for heavy hammering and demolition work.

- 3111000 (.883618) **4LB**
- 3112000 (.883620) **6LB**
- 3113000 (.883621) **8LB**
- 3115000 (.883626) **10LB**



Round Point Shovel

45520 (.786033)

- Open-back industrial gauge steel blade
- Ideal for digging and excavation in various soils
- Forward Turned Step - For Secure Foot Placement
- 48" North American Hardwood Handle - For Strength And Durability



Square Point Shovel

44124 (.785541)

- Industrial grade 14-gauge blade
- Forward turned-step for secure foot placement
- Premium 48-in North American hardwood handle
- Extended tab socket for added strength
- Professional-grade tool for even the toughest jobs



44124 (.785541)

6CU FT Steel Contractor Wheelbarrow Flat Free Tire

M6FFBB (.786581)

- 16 inch flat free tire with ball bearings
- 60 inch heavy duty wood handles
- 6 cubic foot capacity, heavy duty steel tray
- Patented leg stabilizers make wheelbarrow 40% more tip-resistant



M6FFBB (.786581)

Concrete Rake

83148 (.767642)

- 20 inch wide steel head spreads and levels concrete evenly
- Steel ferrule for strong handle to head connection
- Strong hardwood handle



Heavy Duty Asphalt Rake

63125 (.26708)

- One piece forged steel head
- Long shaft stands up to hot asphalt
- Strong hardwood handle connected to head with long steel ferrule



MAX

Cordless Wire Mesh Cutter

WMC80 (.1137357)



- battery operated tool which means no cord or hose required
- Cuts W1.4 (10GA.) up to W8 (%.5GA) mesh in approximately 0.7 seconds
- The tool will automatically shut off after 10 minutes of inactivity
- Helps shield cutting blades to prevent foreign materials from entering the tool



WMC80 (.1137357)

Twintier Rebar Tie Kit

RB443T (.1096571)



- Completes a tie in ½ a second
- Dispenses the precise amount of wire needed to form a tie
- Produces a shorter tie height which requires less concrete to cover a wire tie

Rebar Tying Tool

RB611T (.996787)



- Completes a tie in ½ a second
- Dispenses the precise amount of wire needed to form a tie
- Produces a shorter tie height which requires less concrete to cover a wire tie

Tie Wire Coil 30/Bx

TW1061T (.942994)

- Wire steel is melter, annealed and drawn in the U.S.A
- Steel mill certification available



Rebar Tie Wire

TW898 (.909150)

- Black annealed steel tie wire for MAX Rebar tiers
- 21 gauge
- 312ft per roll
- 50 rolls per case



HARDWORKING FILTERS FOR ALL OF YOUR EQUIPMENT.

END-TO-END FILTRATION FOR THE MOST DEMANDING REQUIREMENTS.

Donaldson delivers *complete filter coverage* for a wide range of equipment used in construction, mining, manufacturing, energy, power generation, and much more...



donaldson.com
shop.donaldson.com
800.374.1374

© 2018 Donaldson Company, Inc.

 **Donaldson.**
FILTRATION SOLUTIONS

Construction Supplies



Ram Board Multi-Cutter

MULTI-CUTTER-CS (.951017)

- The handle can store up to 4 extra blades
- Cuts a number of materials, including Ram Board, rosin paper, plastics, roofing felt, cable ties, and cardboard
- Dual Edge-Guard System™ protects both corners of the utility razor from toughing the floor surface



Waterproof Shoe Covers 100/Box

54301 (.769644)

- Available in PE Coated Cloth and Plastic options
- Reusable and disposable
- The non-woven fiber shoe covers provide excellent protection for outside jobs
- The polyethylene coated option features a skid resistant bottom and is leak resistant



2"x180' All-Purpose Blue Painter's Tape

BT2180C (.786404)

- A multi-surface tape made with medium adhesion that won't leave a residue
- uv-resistant when exposed to indirect and direct sunlight
- Made with an extra heavy duty paper, it's the toughest all purpose painter's tape on the market



CS36500 (.769359)

36"x500' Carpet Shield

CS36500 (.769359)

- Self-adhering film designed to protect carpeting
- Highly resistant to tears and punctures
- Protects all kinds of carpeting for up to 45 days
- Will not leave any adhesive residue



Builder Board

BLD38100 (.769360)

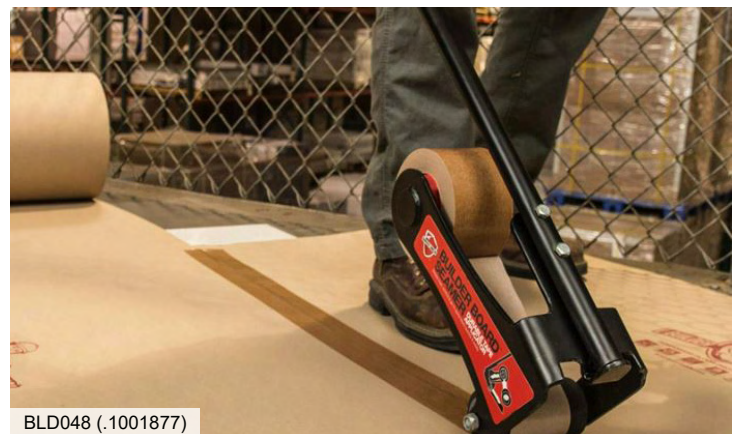
- 38 in. x 100 ft. roll
- Installs fast and flat and is non-staining
- Allows moisture and vapors to escape
- Protects granite, travertine, marble, wood, etc.
- Heavy duty surface protection - 100% recyclable



Builder Board Tape

BLD048 (.1001877)

- Breathable seam tape comes in both 2" and 3"
- Strong, flexible and lays flat
- Liquid resistant
- Quickly and efficiently covers Builder Board temporary floor protection seams

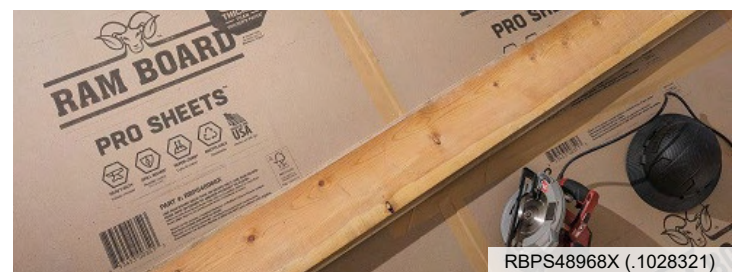


BLD048 (.1001877)

Ram Board Pro Sheets Floor Protection

RBPS48968X (.1028321)

- 8X thicker than standard Builder's Paper
- Made with our exclusive Spill Guard® technology for extreme liquid holdout
- Similar to corrugated plastic or plywood
- Easy to use, lay down flat, and are easy to seam together with Ram Board's Seam Tape.



RBPS48968X (.1028321)



BACKFILL TAMPERS & SAND RAMPERS TOOLS

- Perfect for compacting in soil and sand applications
- Built to withstand heavy use in tough environments
- Seal design keeps internal components free from dirt and grit

SKU 341A2M



CHIPPING HAMMERS

- Top choice for light demolition work, including concrete and masonry removal
- Hard-hitting, well balanced tool
- Variety of sizes, capacities, and precision matched accessories provide the best tool to the job

SKU 2A1SA, 2A2SA, 2DA2SA, 3A1SA, 3A2SA, 4A1SA, 4A2SA, W2A1, W2A2, W4A2



JACKHAMMERS & ROCKDRILLS

- Simon Ingersoll invented the world's first rockdrill
- Perfect for either wet or dry drilling
- Applications include blast holes, post holes and anchor holes
- Three series to choose what's right for your job

SKU JH40C3, JRD30-B



DIGGERS

- Great for medium to heavy density earth or rock-laden earth, and light to heavy demolition
- Time tested valve durability in dusty conditions
- Available in multiple retainer configurations
- Extra-long nozzles provide increased longevity

SKU 93LA1, 95LA1, 95LA3

WE'VE GOT FASTENERS

- ✓ Self-Drilling Screws
- ✓ Coarse Thread Screws
- ✓ Sharp Point Screws
- ✓ Clip Thread Screws
- ✓ Fine Thread Screws
- ✓ And More...



Talk to your sales representative about Vendor Managed Inventory!

Woven Polyester Cable-Pulling Tape

- High tensile strength, low stretch
- Printed sequential footage markings for accurate measurements
- Easily blown through conduits or ducts
- Available with or without detectable tracer wire

Woven Polyester Cable-Pulling Tape

Part Number	Approximate Width (in.)	Length (ft.)	Tensile Strength (lbs.)
WP12503000	1/2	3,000	1,250
WP12505000	1/2	5,000	1,250
WP18003000	5/8	3,000	1,800
WP18005000	5/8	5,000	1,800
WP25003000	3/4	3,000	2,500
WP25005000	3/4	5,000	2,500

Longer lengths available, up to 100,000 ft.

Woven Polyester Cable-Pulling Tape



3-in-1 Pull Tape

- 3-in-1: thread, measure, and pull
- Sequential footage markings
- Easy center pull bucket
- Reduce tension at start of pull
- Low stretch

3-in-1 Pull Tape

Part Number	Tensile Strength (lbs.)	Typical Bowline Strength (lbs)	Typical Knot Strength (lbs)	Pail Quantity (ft)	Approx Pail Weight (lbs)	Pails Per Pallet
WPB4004500	400	190	300	4,500	13	48
WPB12502100	1,250	595	940	2,100	12	48
WPB18001300	1,800	830	1,400	1,300	14	48
WPB2500750	2,500	1,190	1,875	750	21	48



3-1 Pull-Tape

Spiral Wrapped Light Duty Poly Twine

- Ideal for many types of pulls, including pulling rope through conduit
- Will not rot, mildew or rust
- Can be left in conduit for future use
- Ships in plastic pail for ease of use and storage

Spiral Wrapped Light Duty Poly Twine

Part Number	Length (ft.)	Tensile Strength (lbs.)
SRPT6500B	6,500	210
SRPT2200B	2,200	500



Spiral Wrapped Light Duty Poly Twine

Superior Quality • Same Day Shipment!



erin rope
corporation

Composite Double Braid

- High-strength premium-grade polyester rope
- Low elongation and torque-free design
- Factory spliced pulling eyes at each end
- Proudly made in the USA
- Custom continuous lengths available

Composite Double Braid

Part Number	Diameter (inches)	Length (ft.)	Minimum Break Strength (lbs.)
CDB120600	3/8	600	5,000
CDB121200	3/8	1,200	5,000
CDB140600	7/16	600	7,500
CDB141200	7/16	1,200	7,500
CDB160300	1/2	300	9,500
CDB160600	1/2	600	9,500
CDB161200	1/2	1,200	9,500
CDB180300	9/16	300	16,150
CDB180600	9/16	600	16,150
CDB181200	9/16	1,200	16,150
CDB200300	5/8	300	18,000
CDB200600	5/8	600	18,000
CDB201200	5/8	1,200	18,000
CDB240300	3/4	300	26,000
CDB240600	3/4	600	26,000
CDB241200	3/4	1,200	26,000
CDB280300	7/8	300	32,000
CDB280600	7/8	600	32,000
CDB281200	7/8	1,200	32,000
CDB320300	1	300	42,000
CDB320600	1	600	42,000
CDB321200	1	1,200	42,000



Superior Quality • Same Day Shipment!



**erin rope
CORPORATION**

3 Strand Twisted Yellow Polypropylene Rope

- Made from premium polypropylene fibers
- Lightweight and buoyant
- Resistant to rot, mildew, and most chemicals
- High visibility with a bright yellow color
- Flexible 3-strand twisted construction for easy handling, knotting, and splicing

3 Strand Twisted Yellow Polypropylene Rope

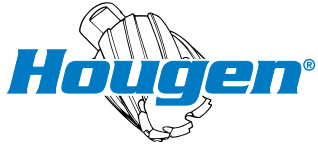
Part Number	Diameter (in.)	Length (ft.)	Minimum Break Strength (lbs.)
TWPY060600	3/16	600	720
TWPY061200	3/16	1,200	720
TWPY066000	3/16	6,000	720
TWPY080600	1/4	600	1,250
TWPY081200	1/4	1,200	1,250
TWPY082400	1/4	2,400	1,250
TWPY085000	1/4	5,000	1,250
TWPY120300	3/8	300	2,440
TWPY120600	3/8	600	2,440
TWPY121200	3/8	1,200	2,440
TWPY122400	3/8	2,400	2,440
TWPY123600	3/8	3,600	2,440
TWPY160300	1/2	300	3,780
TWPY160600	1/2	600	3,780
TWPY161200	1/2	1,200	3,780
TWPY162400	1/2	2,400	3,780
TWPY200100	5/8	300	5,600
TWPY200600	5/8	600	5,600
TWPY201200	5/8	1,200	5,600
TWPY240600	3/4	600	7,650
TWPY241200	3/4	1,200	7,650
TWPY320100	1	300	12,600
TWPY320600	1	600	12,600



Superior Quality • Same Day Shipment!



erin rope
CORPORATION



76004PR 40v Cordless Electro-Hydraulic Hole Puncher Kit

0764103 (.1087684)

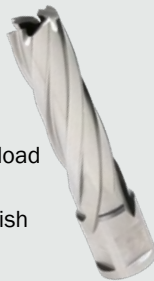
- Produces 16.9 tons of punching pressure can quickly punch through 3/8" materials in 4 seconds
- Easily confirm the hole position with the jog down feature
- Punch automatically returns to the starting position after the punching cycle is complete



0202101 (.1116383)

Quad Helix Flute Cutters

- Hardened M2 high-speed steel material
- Patented hougen-edge geometry provides faster, smoother cuts, with less chatter
- Up to 10 cutting edges distribute the cutting load evenly to maximize feed rates
- Provides for less friction and a better hole finish



SPECIAL ORDER ONLY!

HMD2X2 Portable Low-Profile Magnetic Drill

0202101 (.1116383)

- Only 7-5/8" high easily fits into tight spots
- Lightweight at only 29.2 lbs (13.2kg)
- Positive slug ejection pilot light, and carrying case
- Spline arbor for smooth cuts and minimal maintenance
- Uses "12,000-Series" or Copperhead Carbide Cutters



XTREME COBALT

PREMIUM M42 & IRONEDGE™ COATED



CALL FOR SIZES & PRICING!



Cutting Tools



Tap and Die Set

CS40P-A (.1096437)

- Cut Clean, Precise Threads In Metal
- Industrial Performance Set - UNC / UNF Sizes
- High Speed Steel Plug Taps, Hex Dies
- Ratcheting Style Wrench - Better Torque Control, Forward / Reverse Operations



CS409-A (.1096437)

CT7 Series Carbide Tipped Hole Cutters

CT7 - Multiple Sizes

- Drill fast, accurate holes through steel up to 1" inch depth
- Ultra-sharp tungsten carbide teeth cut quick, smooth, perfectly round holes
- Flatted shank for use in power drills and drill presses
- Sizes available: 9/16", 5/8", 11/16", 3/4", 13/16", 7/8", 15/16", 1", 1 1/16", 1 1/8", 1 3/16", 1 1/4", 1 5/16", 1 3/8", 1 7/16", 1 1/2", 1 9/16", 1 5/8", 1 11/16", 1 3/4", 1 13/16", 1 7/8", 1 15/16", 2", 2 1/8", 2 1/4", 2 3/8", 2 1/2", 2 9/16", 2 5/8", 2 3/4", 2 7/8", 3", 3 1/4", 3 1/2", 3 3/8", 3 3/4", 4", 4 1/8", 4 1/4", 4 1/2"



Brute XSR Step Reamer Set

XSR-SET (.980707)

- Includes 1 Piece Each XSR-5/16X9/16, XSR-9/16X13/16, and XSR-13/16X1-1/16
- 15 Drill Sizes: (5/16, 3/8, 7/16, 1/2, 9/16), (9/16, 5/8, 11/16, 3/4, 13/16), (13/16, 7/8, 15/16, 1, 1-1/16)



SuperBrute Mag Drill

AC120 (.1102613)

- Extreme Steel Fabrication Needs
- Super Powerful - Extra Large Cutter Capacity
- Drill Large And Deep Holes In Steel Plate, Structural Steel, Pipe
- Drill Up To 4-3/4" Dia, Up to 4" Depth
- Includes Two Arbors
- Standard 3/4" Weldon Shank Arbor - For Cutters 7/16 to 2-1/4" Dia, Up to 4" Depth
- Large 1-1/4" Shank Arbor - For Cutters 2-3/8 to 4-3/4" Dia, Up to 2" Depth
- Includes Drill Chuck - Use With Twist Drills, Reamers, Countersinks (Up to 1-1/4" Dia)



Carbide Tipped Annular Cutter Set

CT150-SET (.946747)

- Includes Sizes 13/16, 15/16, 1-1/16 + Pilot Pin
- Outperform Standard HSS Annular Cutters 6:1
- For Use With RotoBrute Magnetic Drill Press Systems and Most Other Mag Drill Systems
- Drill Large Diameter Holes In Cast Iron, Steel, Stainless Steel, and Other Tough Or Exotic Alloys Up To 1-3/8 In Depth



CT150-SET (.946747)

BruteLube Cutting Wax

XLUB-WAX-2 (.878935)

- Wax Reduces Mess- Clings To Tool For A Continuous Shield Against Friction And Heat
- Provides Precision Finish With Closer Tolerances On Finished Work
- Use On Steel, Stainless Steel, Aluminum, And Exotic Alloys
- Extends Tool Life And Reduces Chip Welding During Metal Drilling, Reaming, Cutting And Tapping





15pc Diablo Metal Demon Drill Bit Set

DMD-S15T (.1126357)

- Includes (1) each of the following: 1/16", 5/64", 3/32", 7/64", 1/8", 9/64", 5/32", 11/64", 3/16", 13/64", 7/32", 15/64", 1/4", 5/16", and 3/8"
- Ideal for metal (mild steel), cast iron, stainless steel, and sheet metal



16Pc SpeedDemon Spade Bit Set

DSP2980-S16 (.999646)

- Provides one of the fastest, most effortless hole drilling solutions on the market for fast, clean wood
- The high-performance SPEED-TIP design self-feeds for faster hole making when compared to traditional spade bits
- Set includes 16 bits: 1/4", 5/16", 3/8", 7/16", 1/2", 9/16", 5/8", 11/16", 3/4", 13/16", 7/8", 1", 1 1/8", 1 1/4", 1 3/8" and 1 1/2"



Jig Saw Blade Set for Wood & Metal

DJT10S (.998876)

- 10-Piece Wood and Metal Set provides up to 25% in savings
- T-shank design fits all combo and most U-shank jig saws



7Pc Rebar Demon SDS-Plus Hammer Bit Set

DMAPL9920-S7 (.998831)

- Withstands impact and high heat applications
- Delivers stability and accuracy
- Provides heat resistance and prevent breakage of the full-carbide heat for maximum life and productivity



3Pc Impact Step Drill Bit Set

DSDS003 (.1077766)

- 3-piece set savings up to 15%
- Split Point Tip (132°) for increased speed,
- Maximum durability and up to 6X longer life
- Accu-Grind Technology for up to 2X faster cuts in drilling and hole making



29pc Diablo Metal Demon Drill Bit Set

DMD-T29 (.1120463)

- Includes (1) each of the following: 1/16", 5/64", 3/32", 7/64", 1/8", 9/64", 5/32", 11/64", 3/16", 13/64", 7/32", 15/64", 1/4", 17/64", 9/32", 19/64", 5/16", 21/64", 11/32", 23/64", 3/8", 25/64", 13/32", 27/64", 7/16", 29/64", 15/32", 31/64", and 1/2"



DMD-T29 (.1120463)

45Pc Screwdriving Bit Set

DSC-S45 (.1000900)

- Extreme durability and impact resistance for up to 50X longer life versus standard drive bits
- Magnetic nut setters and drive bit holder includes a permanent magnet to eliminate wobbling by securely gripping screws and hex nuts
- Optimized tip design reduces wear, minimizes breakage and prevents slippage



17Pc Plumber's Hole Saw Set

DHS17SPL (.934532)

- 2 3/8" cutting depth for 40% deeper holes in 1 pass
- 1-Size fits all mandrel fits all Diablo hole saws, from 5/8" to 6" diameter
- Tool-free plug ejection for fast material removal





HIGH PERFORMANCE CUTTING



BI-METAL BAND SAW BLADES

Challenger® delivers long life and straight cuts with reduced vibration and noise when cutting structural material.

Features:

- For structural cutting of bundles, I-beams, interrupted cuts, low alloy steels, carbon steels
- Designed to absorb repeated impact when cutting multi-walled parts
- Reduced chance of stripping teeth
- Wide kerf options available



RECIPROCATING SAW BLADES

It is now quicker than ever to choose the right recip for your job.

Know your application, pick your blade, start cutting!

Features:

- Simplified inventory for quicker, easier blade selection
- Value- and performance -driven options
- Improved pricing with the same application coverage

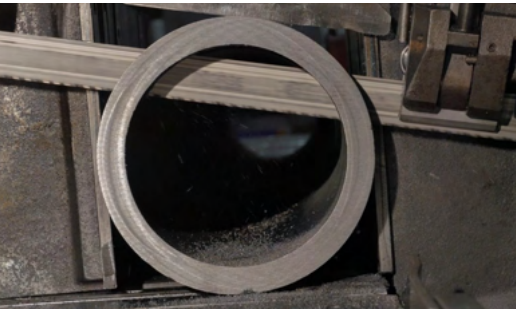


PORTABLE BAND SAW BLADES

The perfect option for all your metal cutting needs. With a streamlined offering, Morse has changed the game when it comes to tooth pitch selection.

Features:

- 4 high-performance tooth options
- Improved organization for easy selection
- Simpler SKU options, same quality performance



LEARN MORE AT MKMORSE.COM

THE ANSWER
to all your metalworking needs!



32pc Tamperproof Bit Set

32525 (.773856)

- Includes 3/32-Inch, 7/64-Inch, 1/8-Inch, 9/64-Inch, 5/32-Inch, and 3/16-Inch Fraction Hex bits
- Durable PVC gray block allows for easy storage of tamperproof bits
- Block slides over most screwdriver shafts for easy bit access and storage



Tradesman Pro Tool Bag Backpack

55421BP-14 (.845524)

- Tool bag backpack features large opening for power tool organization, with 39 interior pockets for mobile hand tool storage
- Hard molded front pocket protects safety glasses
- Small zipper pouch for small parts and tools
- Fully molded bottom protects from the elements
- 39 pockets



55421BP-14 (.1084364)

Rechargeable Waterproof LED Pocket Light with Lanyard

56411 (.1084364)

- Features a durable 10-Foot drop rating and is both waterproof and dustproof
- Compact light has four modes: High at 275 lumens, Medium at 100 lumens, and all-day Eco setting and Strobe
- Comes with a removable lanyard to keep the light close by



7pc Screwdriver Set w/Cushion Grip

85076 (.54076)

- A general-purpose selection of the most frequently used screwdriver tips and sizes
- Screwdriver Set includes three cabinet-tip, two Phillips-tip and two keystone-tip styles
- Cushion-Grip™ handle for greater torque and comfort and premium chrome-plated for smooth feel and corrosion resistance



4-in-1 Ratcheting Wrench Set SAE 2pc

68216 (.1098620)

- Two 4-in-1 box wrenches with 12-Point socket sizes 1/4 x 3/8, 3/8 x 7/16, 1/2 x 5/8, 5/8 x 3/4-Inch in just two tools
- 90-tooth ratchet mechanism to minimize the return angle for maximum access with 20-Percent improvement on 72-tooth ratchets

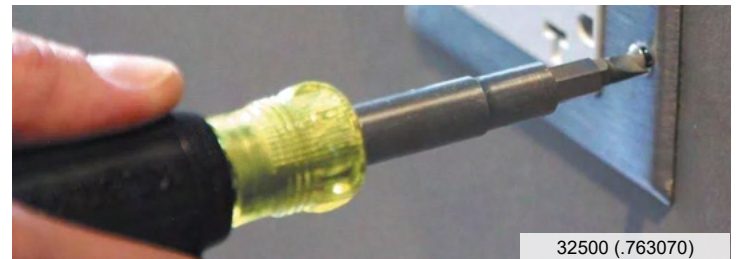


68216 (.1098620)

11-in-1 Screwdriver / Nut Driver

32500 (.763070)

- Multi-bit screwdriver / nut driver shaft holds 8 popular tips and converts to 3 nut driver sizes
- Interchangeable blade for fast and easy switch out; comfortable Cushion-Grip™ handle
- Blast finish bit tips provide a firm hold and reduce cam-out



32500 (.763070)



Southwire™

14Pc Apprentice Tool Kit

65187640 (.1002343)



- Constructed with Fire Rivet™ technology, our pliers are designed to provide clean cuts with no wobble
- Wire stripper is made with stainless steel cutting blades for fast and clean wire stripping
- Our screwdrivers and nut drivers feature a comfortable hex shaped handle for maximum torque

Pac Mac Wire Spool Dispenser

PM10 (.986621)

- Made in America
- Spindles fold up and lock
- Handle/guide loop position controlled by plunger allowing for 4 positions and no loose parts
- Swivels 360° but can be locked in a fixed position



Conduit Bender

MCB½ (.903949) 1/2"

MCB¾ (.903950) 3/4"

MCB1 (.903951) 1"



- Performs common bends, such as stubby-ups, offset, back-to-back and saddle bends
- Provides greater control and helps prevent slippage when applying force
- Raised and highly visible bender markings are cast on both sides of the bender head

AL20RSW (.989740)



2' GCIF Tri-Source

26020008-6 (.53021)

- NEMA 5-15P & (3)5-15R
- Grounded neutral: 4 Ohms
- Applications Include: Construction sites, saws and drills, portable electric power tools, multiple tools
- Trip response time for ground fault and grounded neutral trip: less than 25mS and grounded neutral trip



2' GFCI Tri-SouSJTW Vinyl Outdoor Extension Cords



Catalog / Part #	Cond	Length	Color
2587SW8802 (.70059)	12/3	25'	Yellow
2588SW0002 (.52916)	12/3	50'	Yellow
2589SW0002 (.52047)	12/3	100'	Yellow
2408SW8804 (.52046)	14/3	50'	Red
2409SW8804 (.61409)	14/3	100'	Red

200 Lumen Rechargeable LED Work Light

AL20RSW (.989740)

- High (120 Lumens) and low (60 Lumens) allowing you to adjust to your desired needs
- 120 DEGREE WIDE BEAM angle perfect for illuminating your work spaces
- Twist-Lock head with magnetic mount allows you to remove lamp and place on any magnetic surface





6pc Quick-Change Carbide Cutter Set

660 (.748382)

- Cuts stainless steel quickly and easily
- Quick Change arbor allows for easy changes to cutter heads
- Flange stop prevents over-drilling
- Replaceable cobalt-steel pilot drill with split-point tip prevents walking



7pc Magnetic Nut Driver Set

0253-01MAG (.1020057)

- Includes 3/16", 1/4", 5/16", 1 1/32", 3/8", 7/16", 1/2" nutdrivers
- Rare earth magnetic tips for a strong hold on nuts and bolts
- Color-coded handles and labeled shafts for easy part identification
- High-grade, rust resistant, chrome-plated finish



1-1/4" Quick Release Ratcheting PVC Cutter

864QR (.942591)

- Replaceable Blade: Effortlessly replace the blade without tools or loose parts
- Ergonomic Design: Reduced hand force during operation
- Easily squares up all ranges of pipe sizes up to 1-5/8" O.D. to ensure a straight cut



864QR (.942591)



660 (.748382)

Non-Contact Voltage Detector

GT-13 (.104305)

- Tests and accurately detects voltage in outlets, lighting fixtures, power wiring, cables, and circuit breakers with audible and visual alerts
- Non-contact design allows you to safely detect AC voltage from 50V to 1000V AC, and it has a frequency rating of 50/60Hz
- Features a bright flashlight to help you see better during receptacle testing in dark work areas



Reel-X 100' Fiberglass Fish Tape

FTXF-100 (.1020027)

- Free-spinning interior reel for faster fishing
- Utilize secondary exit and set case on the ground to free-up both hands for fishing
- Anti-Bind Design
- Quick-Change replacement reels
- Fatigue/Strain reducing ergonomic case design



7pc Drill/Tap Kit for Stainless Steel

DTAPSSKIT (.1020048)

- Split-point tip resists walking and penetrates material faster
- Strong, high-speed steel provides superior resistance to heat and abrasion
- Titanium nitride coating ensures that the bits run cooler, drill faster, and last longer



THE POWER OF EXPERIENCE



PAT750LI (781808)

PATRIOT® 12 Ton C-Head 18V Battery Crimping Tool Kit



PAT46LWSLI (931132)

Patriot 15 Ton C-Head 18V Battery Crimping Tool Kit



UDIEKITCU (915779) For Copper
UDIEKITAL (915780) For Aluminum
U Die Kit



PAT644LI (911902)

PATRIOT® 11 Ton Dieless Latch Head 18V Battery Crimping Tool Kit



Max Patrol Leading Edge SRL

- R410010LE (.1089981) **10'**
- R410020LE (.948379) **20'**
- R410030LE (.956221) **30'**
- R410065LE (.956223) **65'**

- Impact Resistant Polymer Housing with swivel top
- Meets ANSI z359.14, Class A and OSHA Standards
- Max Patrol leading edge is approved for use over steel beam, precast concrete and b-deck
- Minimizes Fall Arrest Distance to less than 24 inches when used overhead



Litefit Standard Harness w/Back D-Ring

- H312001 (.887572) **Small**
- H312002 (.884775) **Medium / Large**
- H312004 (.887573) **Extra-Large**
- H312005 (.887574) **XXL**

- Meets ANSI z359.11 Standards for Full Body Harnesses
- 5-point adjustments for optimal fit
- Built in Relief Handles provide immediate relief after a fall arrest allowing you to reach a gravity override seated position



Roofing Bucket Kit

K112201 (.831043)

This kit includes...

- Reusable roof anchor
- 50ft poly-dac rope
- BaseWare harness w/ tongue buckle leg straps
- Manual rope grab w/ an integrated 3ftshock absorbing lanyard



Proform Switchpoint Climbing/Construction Harness

- H062141 (.1064092) **Small**
- H062142 (.1064094) **Medium / Large**
- H062144 (.1064095) **Extra-Large**
- H062145 (.1064096) **XXL**

- Meets ANSI Z359.11 Standards for Full Body Harnesses
- Built-in SwitchPoint Technology is designed with post-fall safety and rescue in mind



SPECIAL ORDER ONLY!

22" Chain Rebar Positioning Lanyard

C191204 (.927768)

- Snap hook harness connection
- Rebar hook anchorage connector
- Intended for work positioning applications only
- Made with Grade 80 twist link chain for strength and durability



Fall Protection

Construction Style Positioning Harness

- 1161308 (.820217) **Small**
- 1161309 (.937001) **Medium / Large**
- 1161310 (.937002) **Extra Large**

- Equipped with a fixed dorsal D-ring to help reduce the need for readjustment throughout the workday
- Available in a variety of standard, comfort, and hot works configurations



DBI Exofit Strata Comfort Vest Positioning Harness

- 1112480 (.899285) **Small**
- 1112481 (.899286) **Medium**
- 1112482 (.899287) **Large**
- 1112483 (.899288) **Extra Large**

- Meets ANSI Z359 standards
- Aluminum back and side D-rings

SPECIAL ORDER ONLY!



Protecta Sliding Beam Anchor

2104703 (.943162)

- Compatible with various fall protection systems



Protecta Edge Self-Retracting Lifeline

- 3590046 (.921459) **20'**
- 3590048 (.925093) **50'**
- 3590049 (.1117674) **66'**

- Swiveling anchorage connector loop
- Features impact-indicating external energy absorber (for models with external shock pack)
- Aluminum or thermoplastic housing design





American Producers is a FallTech Authorized Repair Center for Self-Retracting Devices (SRD's)

We inspect, repair and certify all FallTech cable SRDs.



FT-R Class 2 Leading Edge SRL Galvanized Steel Cable

721520LE (.1058460) **20'**

721530LE (.1036843) **30'**

72156LE (.1058461) **60'**

- Reduced nuisance lockups
- Load-indicating swivel snap hook
- Meets ANSI Z359.14-2014. For leading edge applications
- Anchoring flexibility. Anchor overhead or at foot level
- Extra large, double locking anchorage carabiner included
- External energy absorber with patented ViewPack® cover



ASK US ABOUT THE NEW 420LB WORKER WEIGHT SRL!

FT-One 1D Non-Belted Full Body Harness Tongue Buckle Leg Adjust

8128BM (.1138046) **Medium**

8128BL (.1138043) **Large**

8128BXL (.1138047) **Extra-Large**

8128B2X (.1138048) **2XL**

- Comfort Legs® lateral leg strap construction greatly improves mobility and comfort
- ArrowGrip® dorsal D-ring plate and new slip-resistant connectors minimize slippage for maximum comfort and minimal adjustment throughout the day
- Industry-exclusive shoulder pad material is abrasion resistant to mitigate excess wear and keep the harness in service longer
- Advanced gel padding material disperses harness loads, eliminating hot spots and pressure points for all-day comfort



6' Internal Energy Absorbing Lanyard Single-Leg w/ Steel Snap Hooks

8259 (.873349)

- Low-profile design constructed with tubular polyester webbing
- Features full-length internal energy absorber and visual fall indicator
- Includes alloy steel snap hooks for harness attachment and anchorage connections
- Complies with ANSI Z359.13-2013



6' Duratech Mini Class 1 SRL-P w/Steel Snap Hook

72706SB1 (.898475)

- Features internal locking pawls and ViewPack® external energy absorber for even deceleration
- Long-wearing Dyneema® web lifeline resists abrasion while providing trusted strength
- Nylon housing provides impact resistance in most worksite conditions



8128BL (.1138043)

SPECIAL ORDER ONLY!



BASH Sledge Hammer

WL9-20212 (.837117) **2 ½ lb** WL9-21036 (.797165) **10 lb**
 WL9-20416 (.806152) **4 lb** WL9-21236 (.797169) **12 lb**
 WL9-20624 (.777386) **6 lb** WL9-21436 (.818590) **14 lb**
 WL9-20830 (.777387) **8 lb**

- Duty rating of 375lb
- Features a LOCKTOP® which provides maximum storage capacity for most frequently used tools
- The LOCKTOP® features an impact driver slot to safely hold the most used tools
- Steel plate on the side helps expand storage on the ladder top by allowing the use of magnetic accessories



5" Utility Bench Vice

WL9-28819 (.117632)

- Features a 30,000 PSI gray cast iron body
- Equipped with a movable jaw with a 60,000 PSI ductile iron base
- Includes a large anvil, built-in pipe jaws and a 360 degree locking swivel base
- Dual lock-downs and 4 mounting posts ensure maximum stability while in use



Pallet Jack

161009 (.809244)

- Turning Radius: 180 degrees
- Capacity: 5,000 pounds
- 2-1/2 inch low profile allows for easy engagement of pallets
- Welded all-steel frame and powder coat finish provide maximum durability and protection
- Easy-to-use fingertip controls permit single handed operation
- Pumps designed for any industrial environment
- Lower material in a controlled decent with either hand or foot control for operator convenience
- Overload Protection prevents lifting loads past maximum capacity



WL9-20624 (.777386)

Classic C-Clamp

14214 (.832368) **2"** 14256 (.801432) **6"**
 14228 (.832369) **3"** 14270 (.801434) **8"**
 14242 (.832370) **4"**



- Drop-forged frame is manufactured for greater strength in standard applications
- ACME-rolled spindle provides continuous smooth operation for faster clamping action and maximum strength
- V-grooved anvil allows secure holding of all materials including rounds, squares, and flats
- Black oxide coated spindles and Perma-pads resist corrosion, and are replaceable

F-Clamp

86210 (.832503) **12"**
 86220 (.829101) **18"**



- A simple, no-frills construction means it simply gets the job done
- Regular-Duty F-Clamps feature a clamping force of 1800 lbs
- Black Oxide spindle resists wear and tear while impeding rust
- Drop forged arm provides minimal flex under heavy work loads
- Swivel pad centers on workpiece for a sturdy hold
- Sturdy tommy bar is engineered for durability and comfort
- Features an exclusive, ergonomic Wilton-Grip that ensures comfort, visibility, and speed
- Has a new hex nut design that enables you to easily replace pads and spindles

Hand Tools



Vise Grip 4pc Pro Pliers Set

2078707 (.845080)

- Constructed from durable nickel chromium steel
- Machined jaws for maximum gripping strength
- Anti-pinch, non-slip ProTouch Grips provide comfort, control, and less hand fatigue
- Includes 6-inch diagonal and slip-joint, 8-inch long nose, and 10-inch groove joint pliers



Straight-Line Speedline Chalk Reel

48442 (.22368)

- 100 ft. abrasion-resistant poly line provides 5-6 strikes per pull
- 3:1 gear ratio rewinds the line 3X faster than traditional 1:1 chalk reels
- Slim design for improved grip and comfort



Magnetic I-Beam Level

1801091 (.795940) 24"

1801095 (.795942) 48"

- Rigid aluminium I-Beam construction
- Rotating angle vial
- Large, easy to read vials
- Large handle for easy gripping and holding with or without gloves



Retractable Safety Knife

2088600 (.810679)

- Self-retracting spring action returns blade safely into the housing when not in use
- Interlocking nose reduces blade wobble
- Ergonomic grip fits comfortably in the hand
- Tool-free blade changes



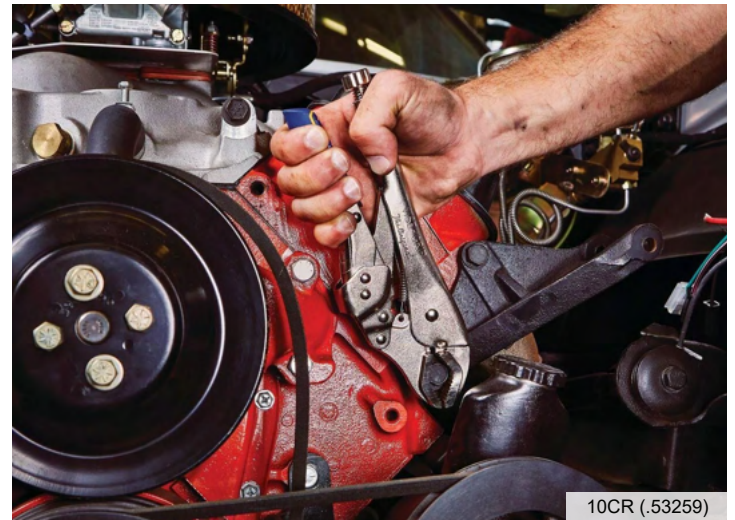
2088600 (.810679)

Vise-Grip Strait-Jaw locking Plier

302L3 (.51421) 7"

102L3 (.53179) 10"

- Hex key adjusting screw
- Ideal for tightening, clamping, twisting and turning; Classic trigger release provides maximum locking force
- Constructed of high-grade heat-treated alloy steel for maximum toughness and durability
- Adjust pressure and work fit with turn screw that stays adjusted for repetitive use



10CR (.53259)

Vise-Grip Curved-Jaw locking Plier

7CR (.51500) 7"

10CR (.53259) 10"

- Self-energizing lower jaw provides 3X more gripping power than traditional locking pliers, with no slipping or stripping.
- Provides maximum torque without requiring heavy input pressure jaw mechanism naturally grips tighter as more torque is applied to the tool.
- Classic trigger release provides maximum locking force.



Carbon Utility Knife Blade 100pk

2083200 (.785628)

- Package Dimensions: 0.51 H x 20.32 L x 9.65 W (centimeters)
- Replacement Blades
- Package Weight: 430.92 grams





150Pc Mechanics Tools Set

CTK150 (.1020551)

- Meets or exceeds ANSI and ASME specifications
- Includes blow mold case for storage and organization
- Contains a carefully selected assortment of hand tools needed for most industrial, mechanical and consumer applications



Siterunner 3 Shelf Folding Jobsite Cart

F3SCBL (.1120498)

- No assembly required - set up your jobsite cart straight out of the box
- Designed for tradesman end use applications holding up to 100 pounds per shelf or 300 pounds total
- T-channel accessory rail allows you to effortlessly attach a variety of accessories and tools improving productivity and organization



F3SCBL (.1120498)

Auto Retractable Utility Knife

CTKAR (.1096289)

- Blade automatically retracts when it loses contact with material, reducing the risk of injury
- Toggle button allows for quick, tool-free blade change
- Ergonomic features for improved grip and comfort



WORKHORSE NITE EYE™ Tape Measure

L1125NE (.1126560)

- High-contrast NITE EYE™ blade with XL markings provides ultimate visibility, even in low light conditions
- 6 inches of protective barrier on the blade reduces rips and tears
- Double sided print provides clear visibility of markings on both sides



SHOCKFORCE NITE EYE™ Tape Measure

L1325B-02 (.1126559)

- High-contrast NITE EYE™ blade with XL markings provides ultimate visibility, even in low light conditions
- 6 inches of protective barrier on the blade reduces rips and tears
- Double sided print provides clear visibility of markings on both sides



CONTROLTOUCH NITE EYE™ Tape Measure

L1025CB-02 (.1126558)

- High-contrast NITE EYE™ blade with XL markings provides ultimate visibility, even in low light conditions
- 6 inches of protective barrier on the blade reduces rips and tears
- Double sided print provides clear visibility of markings on both sides



Master Compound Action Snips

M1R (.8008) **Straight to Left**

M2R (.9745) **Straight to Right**

M3R (.10588) **Straight, Left, Right**

- Made in the USA
- Cuts up to 18 gauge low carbon, rolled steel
- Superior design requires 20% less force to cut
- Tested up to 500,000 cuts, engineered for superior cutting





½cu yd Dump Cart

DUC12T (.996561) ½ cu. yd.

DUC100-R (.971118) 1 cu. yd.

- Premium grade injection molded leak proof polyethylene dump cart provides a smooth rolling trash cart with easy to clean surface, resistant to dents
- Unlike other 850 pound capacity dump carts, this slim dump cart measures only 24" wide, allowing it to easily fit through standard doorways and maneuver with ease down hallways and elevators



Grey Trash Can

CMTC-C-44G (.1077413) 44 Gal

CMTC-C-55G (.1077386) 55 Gal

- Air channels reduce suction and make bag removal a breeze
- Built-in bag cinches to secure liner
- Massively reinforced, jobsite ready trash cans
- Ergonomic built-in handles for comfort and easy handling
- Lids and dollies available as optional accessories



Universal Trash Can Dolly

CATC-DG-HD (.1077391)

- One size fits all Pro-Series Trash Cans and most major brand trash cans
- Designed with massive structural reinforcements for improved longevity and transportation of heavy refuse
- Fits all Magnum Trash Cans, and most major brands



Pro Series Service Cart

CART4426-PRO-A5S (.1050387) 44"x25"

CART4117-PRO-A5S (.1077476) 41"x17"

- Patent pending design allows easy installation in minutes
- Adaptable handle can be installed flat or ergonomically
- Mounting points for hooks, poles and other accessories
- "V" cut on tray for pipe measuring and cutting



34" Portable Fire Extinguisher Stand & Safety Station

SAFE-ST (.1058676)

- Durable polypropylene plastic
- Easy disassembly for efficient shipping and storage
- Mount First Aid Kits and other safety supplies directly to the Firebox to create a highly visible centralized location for dealing with emergencies on the job site
- OSHA Compliant: 1926.150 (A) (1,2,3,4) & (C) (1) (I), 1926.24, 1910.144 & 1910.157 (C)



Crocodile CLOTH

POWER SCRUB

Power SCRUB is our roughest, toughest cleaning cloth yet, for your stickiest gunkiest, greasiest messes. One side is smooth to polish and absorb, and the other side has teeth to scour and scrub.

The scrubbing side is textured to scour through dried-on, baked-on or caked-on grease and grime on hands, tools and surfaces. Follow up with the smooth side to wipe the gunk away. These cloths also have an extra-tough cleaning formulation to power through greasy messes. Non-scratch for most surfaces.

OUR MEANEST CLEAN YET

THIS SIDE HAS TEETH to scour and scrub.

THIS SIDE IS SMOOTH to polish and absorb.

Ideal for:



OIL/GREASE



TOOLS



HOME/GARAGE



PAINT/INK



CAULK/GLUE



HANDS



PATIO/GRILL



CAR/TRUCK

Product Specifications:

- Part # 6500-080, 80-count
- 15.0" x 10.0" (38.1 cm x 25.4 cm)





2 Gallon Red Type 1 Gas Can w/ Funnel

71200110 (.850582)

- Self-closing lid controls spills
- Leakproof, auto-venting lid prevents explosion
- Approved by FM, UL/ULC, and TUV; also meets OSHA and NFPA requirements



5 Gallon Red Type 1 Gas Can w/ Funnel

7150110 (.850579)

- Self-closing lid controls spills
- Leakproof, auto-venting lid prevents explosion
- Approved by FM, UL/ULC, and TUV; also meets OSHA and NFPA requirements



90 Gal Yellow Flammable Safety Cabinet with Self-Closing Door

899020 (.1038849)

- Exterior dimensions of 65" H x 43" W x 34" D
- Complies with OSHA, NFPA 30, NFPA 1 and IFC
- Designed for the safe storage of chemicals and flammable liquids

SPECIAL ORDER ONLY!



5 Gallon yellow Type 1 Diesel Can w/ Funnel

7150210 (.850581)

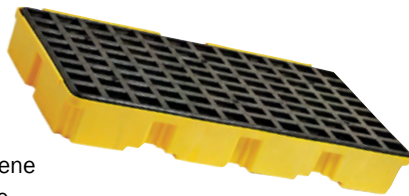
- Color coding avoids accidents
- Self-closing lid controls spills
- Approved by FM, UL/ULC, and TUV; meets OSHA and NFPA requirements



Spill Containment Pallet

1632 (.629158)

- 30 gallon capacity
- 5,000 lb. load capacity
- 26¼" W x 51½" D x 6½" H
- Durable high density polyethylene (HDPE) for chemical resistance
- Removable HDPE grating for easy cleaning
- Easily connects with Eagle's other spill pallets and pallet ramp



9" Poly Funnel for Type 1 Gas Can

F15 (.24027)

- This funnel is specifically designed to fit Eagle Type I metal safety cans, ensuring a secure attachment for smooth and precise pouring, minimizing spills
- Length: 10 inch
- High-Density polyethylene



Type 1 Safety Cans

UI-50-S (.24592) Red 5 Gal.

UI-50-SY (.117417) Yellow 5 Gal.

UI-10-S (.55505) Red 1 Gal.

UI-20-S (.23174) Red 2 Gal.

UI-25-S (.836594) Red 2½ Gal.

- 24-gauge hot dipped galvanized steel
- Made in the U.S.A.
- Meets OSHA and NFPA Code 30 requirements



UI-50-S (.24592)



Economy Sanitary Brush

75125 (.139588)

- 5½ in L x 4 in W Brush Area
- Long Solid Handle
- Tampico Fill/Wood Handle



Shoe Handle Scratch Brush

83003 (.423100)

- Densely filled for long life
- Wire: steel or stainless steel
- Handle with suspension hole



5" Wood Handle w/ Metal Thread

77015 (.139592)

- Designed to hold designated "Dust" or "Wedge" mop heads
- Each block includes threaded holes to accept wood or fiberglass handle



Economy Garage Broom

8125 (.140632) 18"

81252 (.140631) 24"

- Ideal for sweeping on semi-smooth surfaces such as wood, concrete, factory and shop floors
- Feature durable construction and materials at an affordable price point



8" Counter Duster

54005 (.139583)

- Hang-up hole in the handle end for convenient storing
- Kiln-dried, top quality hardwood, coated with a clear moisture-resistant sealer for long life and resistance to oils and chemicals



Black Tampico Broom

81211 (.368495) 18"

81212 (.190055) 24"

- Durable, economical line of quality products for both industrial and DIY applications
- Each block has threaded holes for wood or fiberglass handles



Jobsite Storage



JOBMASTER® Chest

- 32 (.54528) **32" x 19" x 18½"** 5 cu ft Usable Capacity
- 36 (.54635) **36" x 19" x 21½"** 7 cu ft Usable Capacity
- 4824 (.54835) **48" x 24" x 28¼"** 16 cu ft Usable Capacity
- 4830 (.54948) **48" x 30" x 34¼"** 25.25 cu ft Usable Capacity
- 60 (.55042) **60" x 24" x 28¼"** 35.3 cu ft Usable Capacity

- Patented WATCHMAN® IV Lock System with 2-point latch and 7-gauge reinforced lock housing for best-in-class theft prevention in a tool storage chest



Transport Cart

KT-01 (.1103815) *

- Oversized, 8-inch-diameter rubber wheels with both swivel and locking features
- Maximizes mobility even when moving maximum payloads across the jobsite
- 750 lb. load rating, 50% more than standard carts



Armoured Transport Cart

KAT-01 (.1088675)

- Oversized 8" diameter rubber wheels
- Swivel wheels and an ergonomic handle
- 750 lb. load rating, 50% more than standard carts
- 16-gauge Armoured steel panels and full-framed lockable steel doors
- Integrated tray compartments for parts and hardware



StorageMaster Chest

- 69 (.55136) **60" x 30" x 37"**
- 89 (55334) **60" x 30" x 49"**
- 90 (.116061) **72" x 30" x 49"**

- Features patented WATCHMAN® IV Lock System with 3-point latch and 7-gauge reinforced lock housing for best-in-class theft prevention
- Heavy-duty 16-gauge steel construction with fully arc-welded seams
- Spring guards prevent shifting loads in the piano box from damaging the gas springs
- Heavy-duty recessed side handles allow for enhanced mobility
- 4-way skids with 7-gauge construction allow access to the tool storage box from any side



JOBBOX

30" Deep Heavy-Duty Two Door Cabinet

1-698990 (.772438)

- Nearly 17 linear feet of door shelf storage
- Three 5/8" steel locking pins per door
- Welded corner gussets
- Three heavy-duty lock hooks per door
- EZ-Loader® skid bolsters
- Access holes for electrical cables
- Staked and welded hinge
- Stainless steel door hinges resist rust



Original Field Office

1-674990 (.768771)

- 63" x 42" x 80"
- Steel pegboard
- 30 cu. ft. storage locker
- Rain gutters
- Stainless steel door hinges resist rust with upper door safety bar support with locking pin



Site-Vault Chest

- 2-652990 (.1001958) **36x20** 2-656990 (.993332) **48 x 30**
- 2-653990 (.1000725) **42 x 20** 2-655990 (.1000722) **60 x 24**
- 2-654990 (.993330) **48 x 24**

- Site-Vault security system is a patented system with 3 locking points and a reflective orange lock indicator that shows when the box is locked or unlocked
- Heavy-duty beveled edge lid eliminates sharp front lid corners and enhances strength





LevelSafe Pro Automatic Leveler

PK100 (.1103821)

- Compatible for use with the following Werner ladder models: D1200-2, D1300-2, D500-2, D5900-2, D6000-2, D6200-2, T6200-2GS, D7100-2, 7100-2
- Easily attach to select Werner ladders to level ladder on uneven surfaces
- Additional 8.5" maximum automatic leveling height on all ladders
- Compatible for use with Werner ladders 225 lb Type II - 375 lb. Type IAA duty rating



SPECIAL ORDER ONLY!



6208 (.50438)

Type 1AA Fiberglass Step Ladder

6304 (.791364) **4'** 6310 (.791367) **10'**
 6306 (.791365) **6'** 6312 (.791368) **12'**
 6308 (.791366) **8'**

- Duty rating of 375lb
- Features a LOCKTOP® which provides maximum storage capacity for most frequently used tools
- The LOCKTOP® features an impact driver slot to safely hold the most used tools
- Steel plate on the side helps expand storage on the ladder top by allowing the use of magnetic accessories



Type 1A Fiberglass Step Ladder

6204 (.49656) **4'** 6210 (.49569) **10'**
 6206 (.54988) **6'** 6212 (.48679) **12'**
 6208 (.50438) **8'**

- 300lb duty rating
- Features a LOCKTOP® which provides maximum storage capacity for the most frequently used tools
- The LOCKTOP® features an impact driver slot to safely hold the most used tools
- Three anchor points
- Fiberglass rails are non-conductive for working near electricity.



LeanSafe Fiberglass Ladder

L6204 (.916647) **4'** L6210 (.916554) **10'**
 L6206 (.916536)* **6'** L6212 (.916648) **12'**
 L6208 (.916552) **8'**

- Type 1,300 lb. capacity
- Designed to lean against walls, corners, and poles
- Non-marring rubber pad protects the wall
- Top is designed to secure tools and increase productivity
- Rail latch locks legs together when in leaning mode
- Curved foot pads to maximize surface area when in stepladder and leaning mode



Type 1AA Fiberglass Step Ladder

D6216-2 (.55084) **16'** D6228-2 (.50612) **28'**
 D6220-2 (.50530) **20'** D6232-2 (.50698) **32'**
 D6224-2 (.55172) **24'** D6240-2 (.50794) **40'**

- Features non-conductive rails making this ladder ideal for working near electricity
- Duty rating of 300lb
- The exclusive Alflo® rung joint means Twist-Proof® performance on the job
- The Traction-Tred® D rungs are slip-resistant and the side rails are interlocking
- Has dual action feet for use on hard surfaces





2x27 Ratchet Strap w/ U-Hook Tie Down

26422 (.717526)

- Load Hugger Tiedown
 - Ratchet Buckle
 - Weight (lbs.): 5.8 Features: • Meet all DOT and CVSA requirements
 - Ratchet assembly allows fast, easy adjustment
- These two-piece, quality ratchet tiedowns have a 12" long fixed end length with the other length being adjustable



\$29⁹⁹

2x27 Ratchet Strap Flat Hook

61001 (.49324)

- 16 in L fixed end length with the other length being adjustable
- Flexible, conforms to the load for better control

\$29⁹⁹



1x15 Ratchet Tie Down w/ Vinyl S Hook

6A103B (.678512)

- Flexible, Conforms To The Load For Better Control
- Ratchet Designed For Fast, Easy Adjustment
- Soft, Wide Webbing Protects Cargo From Damage
- Meets all DOT and VCSA Requirements

\$15⁹⁹



Series 653 Lever Operated Hoist

- Weston type braking system.
- Simple one-handed free chaining.
- Forged upper and lower hooks with heavy cast steel latches.
- 5-year warranty against defects in material and workmanship.
- Metric rated.
- Meets ASME B30.21 - Manually Lever Operated Hoist Standard and European CE Standard.



Item #	Capacity	Lift
5311 (.614595)	¾ ton	10 ft.
5312 (.706327)	¾ ton	15 ft.
5328 (.676277)	1 ton	5 ft.
5315 (.209979)	1½ ton	5 ft.
5316 (.138560)	1½ ton	10 ft.
5317 (.138869)	1½ ton	15 ft.
5321 (.767953)	3 ton	10 ft.

Super Strong Anchor Shackles

CM Super Strong Shackles are carbon-type shackles with strength ratings that are up to 50% stronger than comparable-sized carbon shackles. These shackles are designed with a 6:1 safety factor. Anchor shackles can be side loaded or used for multiple connections.

- Shackles show major deformation before failure
- Manufactured from micro alloy steel for optimal strength
- Available in sizes 3/16" to 21/2"
- Permanent markings on body indicate working load limit
- Other styles available now by special order



Bolt, Nut & Cotter



Round Pin



Screw Pin

CALL FOR SIZES!



TCL Series Lube Free Air Hoists

TCL Series lube free air hoists are able to operate without air supply lubrication which leaves the surrounding environment free of oil mist from the air exhaust. Our TCL series hoists are recommended for use in any area where oil mist cannot be tolerated such as in food, chemical or pharmaceutical industries. These hoists feature precise load positioning with either pendant or cord control.



TCE Spark Resistant Air Hoists

TCE-IIB Series air hoists are built with components that will reduce or eliminate risk of spark produced by impact or friction in heavy-duty industrial applications. Our TCE-IIB are Ex certified spark resistant to level II 2G Ex h IIB T4 Gb for gas and II 2D Ex h IIB 130°C Db for dust and are in compliance with the ATEX Directive 2014 / 34 / EU.



LB Series Lever Hoist

The LB Series of lever hoists offers a low headroom, compact design that is perfect for use in tight quarters.

- Rugged, all-steel construction that actually weighs less than comparable aluminium models
- Grade 100 heat-treated load chain is nickel plated
- Test certificate verifies that every hoist has been factory load tested to 125% of rated capacity, in accordance with ASME B30.21 requirements
- Patented spring-loaded freewheel mechanism
- Weston-style load brake
- Top and bottom hooks rotate 360°
- Forged and heat-treated alloy steel hooks.
- Rubber grip for non-slip operation



Catalog/Part #	Description
LB008-5 (.802790)	¾ Ton, 5' Lift
LB008-10 (.731535)	¾ Ton, 10' Lift
LB008-15 (.761836)	¾ Ton, 15' Lift
LB010-10 (.754830)	1 Ton, 10' Lift
LB010-15 (.835277)	1 Ton, 15' Lift
LB015-5 (.761838)	1½ Ton, 5' Lift
LB015-10 (.731536)	1½ Ton, 10' Lift
LB015-15 (.766661)	1½ Ton, 15' Lift
LB015-20 (.722696)	1½ Ton, 20' Lift
LB020-5-LWH* (.802795)	2 Ton, 5' Lift
LB020-10 (.784146)	2 Ton, 10' Lift
LB020-15 (.849382)	2 Ton, 15' Lift
LB028-10 (.749632)	2¾ Ton, 10' Lift
LB030-10 (.684020)	3 Ton, 10' Lift
LB030-15 (.583245)	3 Ton, 15' Lift

*with Load Limit Warning Handle



Wedge SL Ultra Thin Rechargeable Inspection Flashlight

88840 (.1137976) **Black**
 88841 (.1137980) **Coyote**
 88842 (.1137981) **Silver**

- Slim high performance flashlight designed for shirt or pocket EDC (everyday) carry
- Durable stainless steel pocket clip
- Rubber end cover included



SPECIAL ORDER ONLY!

ProTac® 2L High Performance Lithium Flashlight

88031 (.791406)

- 350 lumens of bright light in a compact tactical light
- TEN-TAP® Programming allows selection of three different operating programs
- IPX7 waterproof to 1m for 30 minutes; 2m impact resistance tested
- Includes two 3V CR123A lithium batteries and nylon holster



Enduro Por Haz-Lo Intrinsically Safe Headlamp

61424 (.974150)

- IP67 rated design
- Three modes: spot/flood combo for increased light output, spot for distance, flood for area illumination



3AA Haz-Lo headlamp

61200 (.773912)

- 120 Lumens 50,000 Hour Lifetime
- Impact Resistant Engineering Offering Exceptional Durability and Weather Resistance; All Openings Are O-Ring Sealed



88031 (.791406)

NEBO®

Paradigm 7500 Flashlight

NEB-FLT-0058 (.1137955)

- Has a unique form factor that has created a definitive shift in hand-held lighting
- Rubberized, angled grip and beam head



SPECIAL ORDER ONLY!

SLYDE+ LED Flashlight / Work Light

NEB-WLT-0006 (.881499)

- Body Color: Storm Gray
- Body Diameter: 1 3/8"
- Maximum Lumens Output: 300 (LED), 200 (COB LED)



Blueline 1800 Flex Flashlight

NEB-FLT-0052 (.1137956)

- With up to 1800 lumens of intense illumination, four versatile light modes, and a 4x adjustable zoom, the BLUELINE 1800 Flex ensures you have the right light for any situation
- IPX7 waterproof rating
- Will shine through rain, mud, and harsh conditions



SPECIAL ORDER ONLY!

Davinci® 3200L Rechargeable Flashlight

NEB-FLT-1026 (.959533)

- LED technology and Direct-to-Low Startup
- 3200 lumens and 4 light modes
- Push button mode allows you to easily select light modes
- Is USB-C rechargeable and thanks to a USB-A port, you can even use it as a power bank to transfer power to a mobile device



RIDGID

Heavy Duty Pipe Wrench

- 31005 (.10698) **8"** 31020 (.14858) **14"**
- 31010 (.12063) **10"** 31025 (.16193) **18"**
- 31015 (.13527) **12"** 31030 (.17480) **24"**



- Straight Pipe Wrenches have a sturdy, ductile-iron housing and an I-beam handle
- Full floating forged hook jaw
- Self-cleaning threads with replaceable hook and heel jaw

Manual Ratchet Threader Set

36475 (.15112)

- Includes die heads, ratchet assembly, ratchet handle and alloy dies
- Exposed ratchet threader
- Uses 12-R dies
- Includes 1/2" - 2" die heads
- Designed to thread pipe or conduit using individual die heads for each size of pipe and a manually operated ratchet



Model 700 Power Threader Hand-Held

41935 (.16704)

- Cast aluminium body
- Designed for RIDGID® Model 12-R die heads
- Other RIDGID die heads (OO-R, OO-RB, 11-R) can be used using adapters
- Can also be used with 258 / 58XL pipe cutters



41935 (.16704)



62718 (.1014727)

RT1400 14gl Wet/Dry Vac

62718 (.1014727)

- Durable, long-lasting motor backed by industry's best warranty
- 2-Piece Polypropylene Drum Construction - Rugged construction to meet the higher demands found at worksites
- Powerful 6.0 Peak Horsepower



RT1200 12gal NXT Vac

62703 (.991800)

- Powerful 5.0 Peak Horsepower
- Durable, long-lasting motor backed by industry's best warranty
- Polypropylene Drum Construction



V-Head Pipe Stands

56662 (.117310) **High Pipe Stand 20-38"**
 56657 (.256110) **Low Pipe Stand 28-52"**

- Locking ring allows for quick height adjustments
- 12" pipe capacity
- 2,500 lb. weight capacity



Pipe Working Tools



PIPE TOOLS & VISES
SINCE 1896

4' Fiberglass Probe Rod

02960 (.1023530)

- Safely locate pipe or utility lines
- Zinc-plated, steel tip for durability



Cordless Pump Stick Kit

08141 (.985568)

- Complete kit with pump, hose, battery, charger and case
- Includes Bosch® for REED 18V 4Ah battery
- Pumps 15 gallon/minute with fully charged battery
- Rugged, contractor grade, impact-resistant Acetal Copolymer parts and aluminum body for durability and strength



Cordless Pump Stick (BARE TOOL)

08140 (.978971)

- Includes 2 foot, industrial grade hose and coarse screen
- Pumps 15 gallon/minute with fully charged battery
- Rugged, contractor grade, impact-resistant Acetal Copolymer parts and aluminum body for durability and strength



08140 (.978971)

Manhole Cover Hook

02302 (.978952) 30"

02303 (.978953) 36"

- Open manhole covers with ease due to the 1/2" wide points
- Hook has rotated handle (90-degree) and rocker head to more easily enter cover notch
- Heavy-duty, high carbon steel construction provides strength to resist bending
- High quality, made in USA tool able to handle stubborn loads.



L4N1 Thru-Bolt 4-in-1 Ratchet Wrench

02690 (.886079)

- Carry one wrench for all your jobs
- Length and shape of handle yield maximum leverage
- Rugged grip handle construction for a secure hold
- Four sockets are mounted permanently on one wrench
- Sockets are designed to stay on the handle, meaning no loose sockets



02690 (.886079)

Pump Stick Hose

98144 (.978969) 4'

98145 (.978970) 7'

- Smooth interior ensures efficient water flow.
- Crush resistant for reliable water removal.
- Plastic, lightweight hose resists corrosion and remains flexible at low temperatures
- Hose design includes magnetic hose connector



Pump Stick Hose Coupling

98147 (.978972)

- Securely connects two Pump Stick® hoses
- Magnet design holds hoses together.
- For extension, a hose coupling is required to connect each additional hose length





18V 1 - 9 / 16" SDS-Max Rotary Drill Kit

GBH18V-36CK24 (.1090342)

This kit includes:

- (1) Charger
- (1) Auxiliary Handle
- (1) Carrying Case
- (2) CORE18V® 8 Ah High Power Batteries
- (1) PROFACITOR™ 18V Connected-Ready SDS-max® 1-9/16 In. Rotary Hammer



Professional 5 / 8" Corded Mixer

GBM9-16 (.1032891)

- Variable-speed motor – provides high-torque power
- Powerful 9.0 Amp motor generates outstanding torque for mixing materials such as cement
- Rotatable 360° D-handle design plaster and epoxy resin



18V Screwgun & Cut-Out Tool Combo Kit

GXL18V-291B25 (.1090344)

This kit includes:

- (1) 18V Charger
- (2) Belt Clips
- (1) 1/8 In. Collet
- (1) 1/4 In. Collet
- (1) 5/32 In. Collet
- (2) 1/8 In. Cutting Bits
- (1) Screwdriving Bit
- (1) Bit Holder
- (1) Carrying Bag
- (1) GCU18V-30 18V Brushless Cut-Out Tool
- (1) GTB18V-45 18V Brushless 1/4 In. Hex Screwgun
- (2) GBA18V40 18V CORE18V® Lithium-Ion 4 Ah Advanced Power Batteries



GBH-18V-36CK24 (.1090342)

Self-Leveling Rotary Laser Kit

GRL900-20HVK (.1090391)

This kit includes:

- (1) LR10 Laser Receiver
- (1) WM 24 Wall Mount
- (1) BT160 Aluminium Tripod
- (1) GR 8 8-Ft. Leveling Rod
- (1) RC1 Remote Control
- (1) Red Laser Glasses
- (1) Red Target Card
- (3) AA Batteries & (2) D Batteries
- (1) Carrying Case
- (1) GRL900-20HV REVOLVE900 Self-Leveling Horizontal/Vertical Rotary Laser



GRL900-20HVK (.1090391)

18V 1" SDS+ D-Handle Rotary Hammer Kit

GBH18V-26DK25 (.1090339)

This kit includes:

- (1) 18V Charger
- (1) Auxiliary Handle
- (1) Depth Gauge
- (1) Carrying Case
- (1) GBH18V-26D 18V EC Brushless SDS-plus® Bulldog™ 1 In. Rotary Hammer
- (2) GBA18V40 18V CORE18V Lithium-Ion 4 Ah Advanced Power Batteries



AVAILABLE MODES

- Rotary Only
- Rotary Hammer
- Hammer Only

GBH18V-26DK25 (.1090339)



M12 Fuel 2-Tool Combo Kit

3497-22 (.1056941)

This kit includes:

- (1) Contractor bag
- (1) Milwaukee M12 FUEL 1/2" Drill Driver
- (1) M12 FUEL 1/4" Hex Impact Driver
- (1) M12 REDLITHIUM XC 4.0Ah Battery Pack
- (1) M12 REDLITHIUM CP 2.0Ah Battery Pack
- (1) M12 charger



M12 Fuel Compact Band Saw Kit

2529-21XC (.1030242)

This kit includes:

- (1) Contractor bag
- (1) M12 Charger
- (1) 12/14 TPI Extreme Metal Blade
- (1) M12 REDLITHIUM XC4.0 batteries



2520-21XC (.853363)

M12 Fuel Hackzall Kit

2520-21XC (.853363)

This kit includes:

- (1) Hackzall saw
- (1) M12 charger
- (1) M12 REDLITHIUM XC battery
- (1) Contractor bag



2563-20 (.1100485)

M12 Fuel Stubby 1/2" Impact (Bare Tool)

2563-20 (.1100485)

- Up to 550 ft./lbs. of nut-busting torque
- Lightest weight and more compact
- 50% faster application speeds
- Mode 1 RPM: 0-930; Mode 2 RPM: 0-2,100; Mode 3 RPM: 0-3,000; Mode 4 RPM: 0-3,000



M12 Fuel Oscillating Multi-Tool (Bare Tool)

2526-20 (.1007937)

- Variable Speed Dial to allow users to adjust the speed to the application
- Oscillation Angle: 3.9 Degrees for faster cutting
- LED Light for better visibility in low-light situations
- Vibration dampening technology for lowest full tool Vibration



M12 Rover Flood Light w/USB Charging (Bare Tool)

2367-20 (.1012026)

- Provides 700 lumens of TRUEVIEW™ High Definition Output
- Capable of lighting up a workspace for up to 24 hours at a time with an M12™ XC4.0Ah Battery Pack
- Features a light head that pivots 110° for you to orient the light in multiple directions



2367-20 (.1012026)

NEW MADE IN USA HAND TOOLS



MT508A
USA 8" ANGLED DIPPED
GRIP DIAGONAL PLIER



MT558A
USA 8" ANGLED COMFORT
GRIP DIAGONAL PLIER



MT200-2
2PC USA
SCREWDRIVER KIT



MT500-2
2PC USA DIPPED
GRIP PLIERS KIT



MT500-5
5PC USA HAND
TOOL KIT

LINEMAN'S PLIERS

**EASIEST CUTS.
LASTING EDGE.**



BEST LEVERAGE
FOR TOUGH CUTS



LONG LIFE
LASER
HARDENED EDGE



**SMOOTHEST
OPEN &
CLOSE**



Durable, Press
Forged Steel

Reaming Head
1/2"-1" conduit

Bolt Cutters
Cuts #6 & #8

Crimper
Insulated &
non-insulated terminals

Straight Fish
Tape Puller

Tether Ready
Lanyard hole

**CALL FOR
AVAILABILITY
& PRICING!**

Model #	Description
MT500-5	5PC Dipped Grip Cutting Pliers & Cushion Grip Screwdrivers Set (USA)
MT500-2	2PC PLIERS SET (USA)
MT550C	9" Lineman's Comfort Grip Pliers w/ Crimper and Bolt Cutter (USA)
MT550T	9" Lineman's Comfort Grip Pliers w/ Thread Cleaner (USA)
MT550	9" Lineman's Comfort Grip Pliers (USA)
MT500C	9" Lineman's Dipped Grip Pliers w/ Crimper & Bolt Cutter (USA)
MT500T	9" Lineman's Dipped Grip Pliers w/ Thread Cleaner (USA)
MT500	9" Lineman's Dipped Grip Pliers (USA)



CUSHION GRIP SCREWDRIVERS

**BEST FIT.
MAX GRIP.**



PRECISE FIT
REDUCES
STRIPPING



**ANTI-SLIP
TIP**
LASER ETCHED



**LONG
LASTING**
HIGH-STRENGTH
STEEL



Precise
Control
Knurled shank

Anti-Slip Tip
Laser-etched

Long Lasting
High-strength
boron-infused
steel

**CALL FOR AVAILABILITY
& PRICING!**

Visible ID
Markings

Model #	Description
MT200-2	2 Pc Cushion-Grip Screwdriver Set (USA)
MT200-4	4 Pc Cushion-Grip Screwdriver Set (USA)
MT200-6	6 Pc Cushion-Grip Screwdriver Set (USA)
MT201	#1 Phillips 3" Cushion-Grip Screwdriver (USA)
MT202	#2 Phillips 4" Cushion-Grip Screwdriver (USA)
MT203	#3 Phillips 6" Cushion-Grip Screwdriver (USA)
MT204	#2 Phillips 10" Cushion-Grip Screwdriver (USA)
MT205	#2 Phillips 6" Cushion-Grip Demolition Screwdriver (USA)
MT206	1/4" Slotted 4" Cushion-Grip Screwdriver (USA)
MT207	5/16" Slotted 6" Cushion-Grip Screwdriver (USA)
MT208	5/16" Slotted 6" Cushion-Grip Demolition Screwdriver (USA)
MT209	3/8" Slotted 8" Cushion-Grip Screwdriver (USA)
MT210	3/8" Slotted 8" Cushion-Grip Demolition Screwdriver (USA)
MT211	3/16" Cabinet 3" Cushion-Grip Screwdriver (USA)
MT212	3/16" Cabinet 6" Cushion-Grip Screwdriver (USA)
MT213	3/16" Cabinet 8" Cushion-Grip Screwdriver (USA)
MT214	1/4" Cabinet 10" Cushion-Grip Screwdriver (USA)
MT215	#1 ECX™ 4" Cushion-Grip Screwdriver (USA)
MT216	#2 ECX™ 4" Cushion-Grip Screwdriver (USA)
MT217	#1 Square 3" Cushion-Grip Screwdriver (USA)
MT218	#2 Square 4" Cushion-Grip Screwdriver (USA)
MT219	#3 Square 6" Cushion-Grip Screwdriver (USA)

DIAGONAL CUTTING PLIERS

**EASIEST CUTS.
LASTING EDGE.**

Also Available:



Dipped Grip
Sizes: 6", 7", & 8"



BEST LEVERAGE
FOR TOUGH CUTS



LONG LIFE
LASER
HARDENED EDGE



**SMOOTHEST
OPEN &
CLOSE**



Durable, Press
Forged Steel

Tether Ready
Lanyard hole

Model #	Description
MT556	6" Diagonal Comfort Grip Cutting Pliers (USA)
MT557	7" Diagonal Comfort Grip Cutting Pliers (USA)
MT558	8" Diagonal Comfort Grip Cutting Pliers (USA)
MT506	6" Diagonal Dipped Grip Cutting Pliers (USA)
MT507	7" Diagonal Dipped Grip Cutting Pliers (USA)
MT508	8" Diagonal Dipped Grip Cutting Pliers (USA)

LONG NOSE PLIERS

**BEST GRIP.
EASIEST CUTS.**

Also Available:



Dipped Grip



**MAXIMUM
GRIP**
CROSS-HATCHED
TEETH



BEST LEVERAGE
FOR TOUGH
CUTS



**SMOOTHEST
OPEN &
CLOSE**



Reaming Head
1/2"-1" conduit

Durable, Press
Forged Steel

Fish Tape Puller

Tether Ready
Lanyard hole

Model #	Description
MT555	8" Long Nose Comfort Grip Pliers (USA)
MT505	8" Long Nose Dipped Grip Pliers (USA)

CALL FOR AVAILABILITY & PRICING!



M18 Fuel 2-Tool Combo Kit

3697-22 (.1050036)

This kit includes:

- (1) M18/M12 charger
- (1) Carrying case
- (1) M18 FUEL 1/2" Hammer Drill
- (1) M18 FUEL 1/4" Hex Impact Driver
- (2) M18 REDLITHIUM XC 5.0Ah Battery Pack



M18 Fuel 1/2" High Torque Impact Wrench Kit

2967-22 (.919163)

This kit includes:

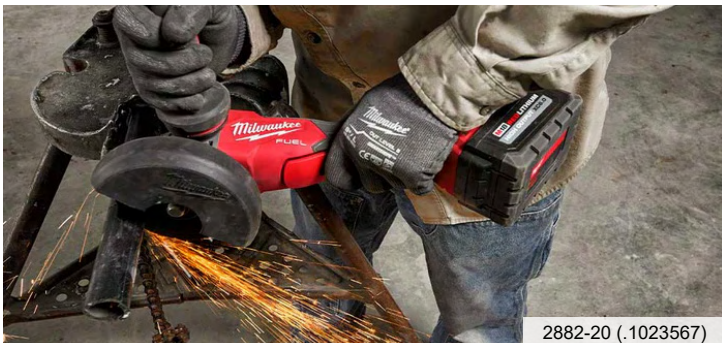
- (1) Hard Case
- (2) M18™ REDLITHIUM™ XC5.0 Resistant Battery
- (1) M18™ & M12™ Multi-Voltage Charge
- (1) M18 FUEL™ 1/2" High Torque Impact Wrench w/ Friction Ring



M18 Fuel 4-1/2 - 5 Braking Grinder (Bare Tool)

2882-20 (.1023567)

- Delivers 8,500 RPM to provide the power to complete the toughest grinding and cutting applications
- REDLINK PLUS Intelligence enables communication between batteries and tools
- Tool-Free Guard Adjustment for faster guard installations and adjustments



2882-20 (.1023567)

M18 Fuel 9" Cut-Off Saw Kit

2786-22 (.986864)

This kit includes:

- (1) Wrench
- (1) Hex Wrench
- (1) M18™ & M12™ Rapid Charge
- (1) Diamond Premium Segmented Blades
- (1) 9" X 3/32" X 7/8" Metal Cut-Off Wheel
- (1) M18 FUEL™ 9" Cut-Off Saw w/ ONE-KEY™
- (2) M18 REDLITHIUM™ HIGH OUTPUT™ HD12.0 Battery Pack



**MAXIMUM PRESSURE,
UNMATCHED VERSATILITY**

2646-20 (.818551)

M18 Cordless 2-Speed Grease Gun (Bare Tool)

2646-20 (.818551)

- 48" flexible hose
- Air bleeder valve for quick priming
- Industry leading 10,000 PSI max operating pressure



M18 Fuel SawZall Recip. Saw (Bare Tool)

2821-20 (.1015661)

- Leverages a POWERSTATE™ Brushless Motor to provide you with 3,000 SPM and a 1-1/4" stroke length for faster material removal
- REDLINK™ PLUS electronics ensure maximum performance under stress as well as protection from overloading, overheating, and over-discharging



metabo

6" M-Brush Technology Grinder

WEPBA 19-150QDS (.855123)

- 14.5 amps of power and M-Brush technology
- Patented dust guard, up to 20% more high overload capacity and 50% more torque
- Quick disc change at the push of a button without tools



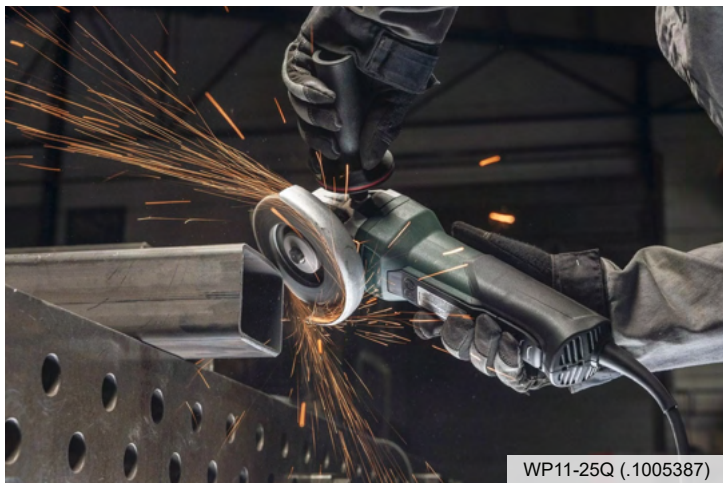
WEPBA 19-150QDS (.855123)

4-1/2" Angle Grinder

W11-125Q (.764733) **Lock**

WP11-125Q (.1005387) **No Lock**

- Compact angle grinder with smallest handle circumference in its class for perfect ergonomics
- Up to 20% more high overload capacity and 50% more torque



WP11-25Q (.1005387)

Slicer-Plus Cut-off Wheel

- Long life
- Cool cutting
- For steel, stainless steel, non-ferrous metals



Catalog /Item #	Type	Size	Max RPM
655997000 (.500890)	1	4 1/2"	15,000
655998000 (.772975)	1	6"	10,200

SPECIAL PRICING OF \$2⁹⁹!

4" Knotted Wire Wheel

655136000 (.329060)

- Edging type: hardened steel-wire
- Especially suitable for processing narrow workpieces
- For universal use in metal processing, e.g. for smoothing welding seams and points, stripping slag, scales and old paint



Original Slicer Cut-Off Wheel

- Aluminium oxide, general purpose wheel
- For steel and other ferrous metals
- Flexibility for flush cutting



Catalog /Item #	Type	Size	Max RPM
655331000 (.108233)	1	4 1/2"	15,000
655339000 (.49796)	1	6"	10,200

2 3/4" Knotted Cup Brush

623804000 (.60975)

- To work on large areas, welded seams, etc.
- Edging type: twisted steel wire
- For universal use in metal processing, e.g. for cleaning, debarring, purging, removing rust, smoothing welding seams and points, stripping slag, scales and old paint





12V Max Xtreme Drill & Impact Combo Kit

DCK221F2 (.1006143)

This kit includes:

- (1) DCD701B 12V MAX Drill/Driver
- (1) DCF801B 12V MAX Impact Driver
- (1) 12V MAX-20V MAX Charger
- (1) Belt Clip and Kit Bag
- (2) DCB122 12V MAX 2.0Ah lithium ion batteries



12V Max Xtreme 5-in-1 Drill/Driver Kit

DCD703F1 (.1068805)

This kit includes:

- (1) Brushless Cordless 5-in-1 Drill/Driver
- (1) DCB122 12V MAX* 2.0Ah Battery
- (1) DCB112 Charger
- (1) Belt Hook
- (1) Kit Bag.



12V Max Green Cross Line Laser Kit

DW088LG-K (.872129)

This kit includes:

- (1) Cross line laser
- (1) Battery pack
- (1) Magnet enhancement Plate
- (1) Drop ceiling attachment
- (1) Charger
- (1) Target Board
- (1) TSTAK Case



DW088LG-K (.872129)

12V Max Xtreme One-Handed Recip. Saw (Bare Tool)

DCS312B (.1036736)

- Lightweight and compact for ultimate portability
- Ergonomics optimized for one-handed use
- Brushless motor for enhanced performance and extended life



12V Max Extreme 5-3/8" Circular Saw (Bare Tool)

DCS512B (.1060220)

- Pro-Grade Cuts - 5-3/8 In. blade size allows for a maximum 1-3/4 in. depth of cut at 90° and a maximum 1-1/4 in. depth of cut at 45°
- High maneuverability with the saw's compact design



12V Max Extreme Oscillating Tool (Bare Tool)

DCS353B (.1060221)

- Convenient portability with lightweight and compact design
- Enhanced performance and long runtime with brushless motor
- Universal accessory adapter works with most oscillating tool accessory brands



20V Max 2-Tool Combo Kit

DCK2100P2 (.1013664)

This kit includes:

- (1) 20V MAX* XR® Impact Driver
- (2) 20V MAX* 5Ah batteries
- (1) charger
- (1) Durable storage bag
- (1) 20V MAX* 1/2 in. Hammer Drill/Driver with FLEXVOLT ADVANTAGE™ technology



20V Max Grease Gun Kit

DCGG571M1 (.834194)

This kit includes:

- (1) 20V MAX* XR® Impact Driver
- (2) 20V MAX* 5Ah batteries
- (1) charger
- (1) Durable storage bag
- (1) 20V MAX* 1/2 in. Hammer Drill/Driver with FLEXVOLT ADVANTAGE™ technology





20V Max 1" L-shaped SDS+ hammer Drill Kit

DCH273P2 (.857825)

This kit includes:

- (2) 20V MAX* batteries
- (1) Charger
- (1) Durable kit box
- (1) 20V MAX* XR® 1 in. SDS PLUS L-Shape Rotary Hammer



DCH273P2 (.857825)

20V Max Deep Cut Bandsaw (Bare Tool)

DCS374B (.876901)

- 5" Cutting Capacity
- LED Work Light with 20 second delay illuminates dark work surfaces accurate cutting
- Integrated hang hook allows user to hang the saw without damaging the front handle or base



20V Max Recip. Saw (Bare Tool)

DCS380B (.802760)

- Variable speed trigger with 0-3000 spm
- 1-1/8" stroke length delivers a fast cutting speed
- 4-position blade clamp allows for flush cutting and increased positional versatility with tool-free blade changes



20V Max 4-1/2" - 5" Grinder (Bare Tool)

DCG412B (.802763)

- 8,000 rpm motor
- Tool-free guard allows for quick and easy guard adjustments/positioning
- Quick-Change™ Wheel Release allows tool free wheel removal



20V Max Battery & Charger Starter Kit

DCB205-2C (.1109540)

This kit includes:

- (2) 20V MAX* 5.0Ah XR Battery
- (1) Battery Charger
- (1) Soft bag



20V Max Powerstack Battery & Charger Starter Kit

DCBP520C (.1065223)

This kit includes:

- (1) 20V MAX* XR POWERSTACK™ 5Ah battery
- (1) Charger



20V Max Compact Battery & Charger Starter Kit

DCB230C (.971981)

This kit includes:

- (1) 20V MAX* 3Ah Battery
- (1) Charger



12V Max / 20V Max / Flexvolt Multi-Port Charger

DCB104 (.945853)

- Simultaneous Charging - 8 Amps output per port charge batteries at the same time
- Compatible with DEWALT® 12V MAX*, 20V MAX*, and FLEXVOLT® 20V/60V MAX* batteries
- Capable of being mounted



DCB104 (.945853)



1/2" DXS Air Impact Wrench w/ Friction Ring Anvil

2236QTiMAX (.1087476)

- Features our patented Drive Xchange System (DXS) for enhanced versatility, torque, and control
- Offers a 1/2" standard anvil length and interchangeable drive options in 3/8", 1/2", and 3/4" (sold separately) to give you everything you need to tackle different projects efficiently
- This air power tool features a durable construction that withstands rigorous use and harsh work environments



2236QTiMAX (.1087476)



W7153 (.1123622)

1/2" DXS Cordless Impact Wrench

W7153 (.1123622)

- Features torque that works smarter, not harder. Tight-fitting DXS attachments deliver up to 15% more motor torque to fasteners*, making the tools more effective – so you never lose power
- Fast-swapping DXS accessories let you perform multiple jobs with one tool, decreasing downtime and saving space in your toolkit



SPECIAL ORDER ONLY!

The Right Tool for Every Time and Place.

Now in Cordless.



Ditch your adapters and save space in your toolkit.

The new **W7153 DXS® Cordless Impact Wrench** from Ingersoll Rand® features the patented DXS® Drive Xchange System™ with fast-swap interchangeable drives that deliver up to 15% more torque to fasteners* without the need for adapters – so you never lose power.

With up to 1,600 ft-lbs of breakaway torque** and a NEW 5-year Limited Warranty that stands behind our legendary quality and durability, the W7153 delivers the power of pneumatic in a cordless tool that works smarter, not harder.

*Compared to traditional square drive sockets. **When used with 3/4" DXS® drive accessories.

irtools.com

- 1,600 ft-lb Breakaway**
1,000 ft-lb Tightening
- Steel reinforced frame, chemical and impact resistant housing and IPX6 environmental rating
- DXS²**
Works with all DXS® Drives, Extended Drives and Sockets
- IQV® Power Control**
Four Tightening Modes: Full Power, Half Power, Wrench Tight, Hand Tight
- Anvil Included:**
1/2" Std Friction Ring A41H
- Maximum Work Visibility**
Patented 360° Shadowless LED Light Ring
- Maximum Control**
Variable speed trigger with electronic brake stops the drive when trigger is released
- Premium Overmold Grip**
- Weight 6.2 lb (bar)**
Compatible with Ingersoll Rand IQV20™ battery
- 5 YEARS WARRANTY**

**When used with 3/4" DXS® drive accessories

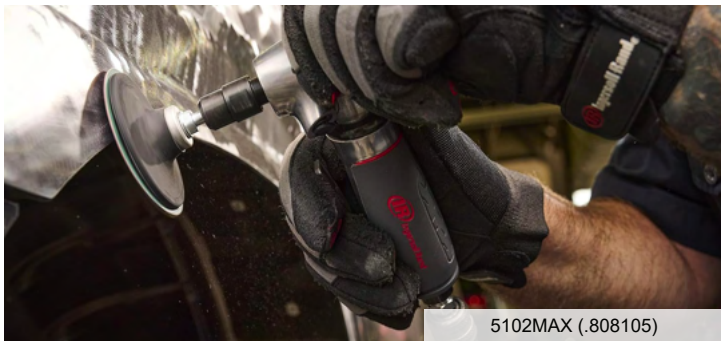




Air Angle Die Grinder

5102MAX (.808105)

- Powered by compressed air, not electric, and its 0.4 HP and 20,000 RPM motor delivers the power you need for the toughest jobs
- Lube-free design eliminates oil messes, spills, and dangers from the work environment and shop area
- Use as a handheld power rotary tool for grinding, sanding, honing, polishing, or machining material
- Its right angled, lightweight, ergonomic design allows you to work better for extended periods



5102MAX (.808105)

Cordless High Torque Impact Wrench Kit

W8171 (.1087474) 3/4" Square

W8191 (.1087475) 1" Square

- With over 2,000 ft-lbs of breakaway torque, they're the most powerful pistol grip cordless impact wrenches on the market
- Remove hoses & trip hazards to keep operators & technicians safe without sacrificing power
- MAX Power, MID, Wrench, Snug and full power reverse



SPECIAL ORDER ONLY!

Cordless Heat Gun

H3111 (.1132597)

- Dual fan speeds and adjustable temperature controls on an LCD display allows the user to better control the work piece temperature



SPECIAL ORDER ONLY!

Straight Die Grinder

5106MAX (.1123233)

- With a 0.4HP (0.3kW) motor and speeds up to 35,000 RPM, MAX Series Die Grinders deliver best in class power to tackle the toughest jobs
- Enhanced ergonomic grip design and low profile level throttle reduces operator fatigue & maximizes operator comfort during extended runtimes
- Optimal lube-free vanes eliminates the need for daily oiling and oil contamination of the work piece and surrounding environment



Air Extended Straight Die Grinder

5208MAX (.1123230)

- With a 0.4HP (0.3kW) motor and speeds up to 25,000 RPM, MAX Series Die Grinders deliver best in class power to tackle the toughest jobs
- Enhanced ergonomic grip design and low profile level throttle reduces operator fatigue & maximizes operator comfort during extended runtimes
- Optimal lube-free vanes eliminates the need for daily oiling and oil contamination of the work piece and surrounding environment



Air Angle Grinder

5445MAX (.1132591) 4.5"

545MAX (.1132595) 5"

- 2.5 hp motor delivers the best power-to-weight ratio to maximize material removal, dramatically reducing job completion time on even the hardest alloys
- Governed motor optimizes air consumption for the task at hand, delivering more power when you need it while increasing the life of abrasives and reducing consumable costs



SPECIAL ORDER ONLY!



H3111 (.1132597)



Bulldog Safety Glasses

EHF10S (.1018745) **Clear**
EHB20ST (.1018732) **Gray**

- Single Wrap-Around Lens
- Spatula Temple Design Integrated Nose Piece
- Meets ANSI Z87.1 Standard
- Provides 99.9% UV Protection



Split-Grain Grey Back Driver Glove

8230M (.543172) **Medium**
8230L (.543171) **Large**
8230XL (.750158) **Extra-Large**

- The premium-grade leather comes from side or shoulder and from areas higher on the animal that receive the least amount of movement



COR-GRIPT™ Latex Gloves

3895S (.1137180) **Small** 3895L (.950074) **Large**
3895M (.1137179) **Medium** 3895XL (.935805) **Extra-Large**

- Offers exceptional gripping power and outstanding protection against punctures and abrasion
- Seamless, machine-knit shells and the high elasticity of the latex coating, make these gloves form-fitting, flexible, and comfortable
- Provides a 10-gauge, gray spun polyester shell with a blue, crinkle latex palm coating



Defender II Disposable Hooded Coverall

MP300XL (.968869) **Large** MP3004XL (.963136) **4XL**
MP3002XL (.963134) **Extra-Large** MP3005XL (.968870) **5XL**
MP3003XL (.963135) **3XL**

- Constructed of tough, composite fabric that combines breathable microporous film and soft non-woven polyolefin
- Provides an effective barrier against particulates, aerosols, and liquids while maintaining comfort
- Designed for work environments where hazardous and non-hazardous liquid and dry particulate contaminants may be present
- Features serged seams, a zipper and collar, a hood, and elastic waist, ankles, and wrists.



Radwear Silver Series Hi-Viz Knit Dip Glove

RWG10S (.1046631) **Small** RWG10L (.1046635) **Large**
RWG10M (.1046632) **Medium** RWG10XL (.1046636) **Extra-Large**

- 15 gauge hi-vis nylon shell
- Micro-foam dipped latex palm
- Meets ANSI/ISEA 105: 2016 - Abrasion 3
- Elastic slip-on cuff
- Meets EN 388:2003 standards for abrasion, cuts, tear and puncture (2 1 3 1)



Nordic Blaze 3-in-1 Self-Extinguishing Balaclava

RWL22SE (.1050868)

- 3-in-1 Design: Easily converts from a balaclava to a neck gaiter or face shield
- Nordic thermal fleece for added warmth and comfort
- Ergonomic design to combat wearer fatigue



Cut Level A4 Cold Weather Glove

RWG605M (.986376) **Medium** RWG605XL (.986378) **Extra-Large**
RWG605L (.986377) **Large** RWG605XXL (.986379) **2XL**

- 7-Gauge terry acrylic liner
- Seamless elastic slip-on cuff
- Tested to EN388 standards for abrasion, cuts, tear and puncture (4 X 4 3 D)
- Complies with ANSI/ISEA 105:2016 - A4 Cut, 5 Abrasion, 4 Puncture
- 13-Gauge 2 Ply blue and white HPPE outer shell with waterproof blue smooth latex coating



Lens Cleaning Towelettes

LCD100 (.995883)

- Disposable lens cleaning towelettes
- Prevents fogging and reduces static
- Silicone free for a residue-free clean
- 8.5" x 5.5" Size: Provides a generous cleaning surface
- Effective Cleaning: Removes dirt, smudges, and fingerprints from lenses





Nordic Blaze Thermal Hard Hat Liner

RWL19 (.1050867)

- Outer Layer blocks out wind
- Inner Nordic Fleece Thermal Layer keeps in heat
- Dual Layer Liner allows for added warmth
- Hook & Loop closure attaches to internal hard hat system
- Chin Strap for stability while wearing hard hats
- Lightweight, Ergonomic Design for added comfort



Rad-Sequel Safety Glasses

RS1-10 (.802138) **Clear**
 RS1-20 (.889259) **Smoke**
 RS1-90 (.914099) **Indoor / Outdoor**



- Protective lens provide 99.9% UV protection
- ANSI Z87.1 compliant
- CSA Z94.3 compliant
- Lightweight design for comfortable all-day wear
- Universal bridge size to accommodate various faces



Mustang Hidex Leather Glove

MU3664M (.1137463) **Medium** MU3664XL (.1137465) **Extra-Large**
 MU3664L (.1137464) **Large** MU3664XXL (.1137466) **2XL**

- Premium A grade Hi-Dexterity 0.70-0.80mm honey gold grain goatskin
- 2.25 oz. grain goatskin leather
- ARC rating of 34 cal/cm² (CAT3) - ASTM F2675
- Tested in accordance to NFPA 70E
- Sewn with DuPont™ Kevlar®
- Flame Resistant – ASTM D6413



SPECIAL ORDER ONLY!

Bear Kat Safety Glasses

BK110 (.730467) **Clear** BK119 (.725484) **I/O Clear Mirror**
 BK112 (.725400) **Gray** BK110AF (.706264) **Clear Anti-Fog**

- Non-Slip soft temple material
- Scratch resistant coating
- Integral side shields for unobstructed view
- Rugged polycarbonate lens filters 99.9% of harmful U.V. rays



Red Ninja Flex Glove

N9680M (.738346) **Medium**
 N9680L (.770118) **Large**
 N9680XL (.726456) **Extra-Large**



- 15 Gauge red nylon shell
- Gray latex coated palm and fingertips
- Latex coating provides outstanding gripping power
- Component materials comply with all relevant federal regulations for food contact

Ninja Ice® Coated Work Gloves

N9690S (.793843) **Small** N9690XL (.757499) **Extra Large**
 N9690M (.812456) **Medium** N9690XXL (.850684) **XXL**
 N9690L (.758961) **Large**

- Acrylic terry liner for insulation and warmth
- Coating remains soft in temperatures as low as -4°F
- The porous HPT coating w/ Anti-Wet treatment repels liquid for a firm grip in wet or dry conditions



Swagger SR1 Series Safety Glasses

SR110 (.809553) **Clear** SR117 (.806701) **Silver Mirror**
 SR112 (.806698) **Gray** SR118B (.806699) **Blue Diamond Mirror**

- Non-Slip co-injected soft temple material
- Rugged polycarbonate lenses filters 99.9% of harmful UV rays
- Meets ANSI/ISEA Z87.1 2020 standard



SPECIAL ORDER ONLY!

**FIND YOUR
PERFECT FIT
WORKEASY CUT RESISTANT GLOVES**

Engineered for comfort and flexibility, the **WorkEasy WE300's** seamless design ensures a snug fit while the polyurethane coating enhances grip in dry and light oil conditions. Resistant to abrasion and punctures, this glove is perfect for precision handling in manufacturing, assembly, and construction tasks.

**WHILE
SUPPLIES
LAST!**



WORKEASY INDUSTRIAL GLOVES

L : WE300-L (.740585)

XL : WE300-XL (.740586)

- Dynamo, fiberglass and polyester blend knit shell provides outstanding cut and slash protection
- Dynamo, outperforms aramid fibers in cut and abrasion resistance testing and on an equal weight basis, is up to 15 times stronger than steel
- Polyurethane coating provides abrasion, tear and puncture resistance, for extended glove wear and is flexible and excellent for grip
- Lightweight shell and palm dip helps to reduce hand fatigue and offers excellent dexterity and tactile sensitivity
- Gloves are easily laundered for longer glove life

Sale \$5⁹⁹

Reg \$10⁹⁹

Marietta, OH
119 Second St
(740) 373-5050

Cincinnati, OH
10770 Kenwood Rd
(513) 791-4252

Columbus, OH
590 N. Hague Ave
(614) 272-1113

Lancaster, OH
1806 Victor Rd
(740) 654-3711

Portsmouth, OH
1763 10th St
(740) 354-3479

Sunbury, OH
6914 St. Rt. 37E
(740) 362-7249

Toledo, OH
1625 Tracy St
(419) 666-7220

Ferdinand, IN
2130 Industrial Park Rd
(812) 998-2130

Glasgow, KY
129 Beaver Trail
(270) 861-0060

Louisville, KY
520 South 15th St
(502) 583-3875

Pittsburgh, PA
7724 Edgewood Ave
(412) 220-2370

State College, PA
2595 Clyde Ave Ste. 2
(814) 308-0071

Wixom, MI
30270 Beck Rd
(248) 669-4040

Huntington, WV
333 Washington Ave
(304) 525-3545

Martinsburg, WV
36 Variform Dr
(304) 263-3364

St. Albans, WV
2822 Winfield Rd
(304) 755-0009

REACH NEW HEIGHTS OF SAFETY CONFIDENCE

With Gaurdian's Big Boss Lanyard



SAVE \$20!



BIG BOSS EXTENDED LANYARD

21300 (.806077) WHILE SUPPLIES LAST!

- Allows free fall of up to 12' for workers up to 310 lbs., and 6' for workers up to 420 lbs
- Lightweight design allows for easy transport around the job
- Manufactured from durable polyester for superior abrasion resistance
- Multiple hook options available
- Contrasting color stitching allows for easy product inspection

Sale \$129⁰⁰ Reg \$149⁰⁰

Marietta, OH
119 Second St
(740) 373-5050

Cincinnati, OH
10770 Kenwood Rd
(513) 791-4252

Columbus, OH
590 N. Hague Ave
(614) 272-1113

Lancaster, OH
1806 Victor Rd
(740) 654-3711

Portsmouth, OH
1763 10th St
(740) 354-3479

Sunbury, OH
6914 St. Rt. 37E
(740) 362-7249

Toledo, OH
1625 Tracy St
(419) 666-7220

Ferdinand, IN
2130 Industrial Park Rd
(812) 998-2130

Glasgow, KY
129 Beaver Trail
(270) 861-0060

Louisville, KY
520 South 15th St
(502) 583-3875

Pittsburgh, PA
7724 Edgewood Ave
(412) 220-2370

State College, PA
2595 Clyde Ave Ste. 2
(814) 308-0071

Wixom, MI
30270 Beck Rd
(248) 669-4040

Huntington, WV
333 Washington Ave
(304) 525-3545

Martinsburg, WV
36 Variform Dr
(304) 263-3364

St. Albans, WV
2822 Winfield Rd
(304) 755-0009

CLOSEOUT SALE

UP TO 60% DISCOUNT ON SELECT PRODUCTS

SAVE BIG ON THESE PRODUCTS



24' 3-SECTION LADDER

D1224-3 (.838498)



\$199 EACH



Southwire™

5-IN-1 MULTI-TOOL PLIERS

S5N1 (.917840)



\$19.99 EACH

**CONTACT YOUR
LOCAL AMERICAN
PRODUCERS REP TO
SECURE THESE
CLOSEOUTS!**



16OZ MOLD CLEANER

MR351 (.932493)



\$4.99 EACH



DIAMOND TOOLS & EQUIPMENT

**14X.125X1"-20MM COMBO
DIAMOND CONCRETE BLADE**

D11151 (.887694)



\$169 EACH

metabo

**3/16X4X6 SDS+ ULTRA-X
4-CUTTER CONCRETE BIT**

674841000 (.1004060)



\$5.99 EACH

ALL CLOSEOUTS ARE WHILE SUPPLIES LAST!

Our added value SERVICES



PROFESSIONAL TOOL REPAIR

American Producers Supply offers repair services for a variety of tools and equipment at our locations in Marietta, Huntington, Wixom, and Toledo. We can repair most professional brands of power tools. We also do warranty work on tools for which we are an authorized repair center for. **Our capabilities include:**

HYDRAULIC & PNEUMATIC TOOLS

At American Producers, **we are an authorized Enerpac Service Center.** We repair hydraulic and pneumatic tools from a range of different brands, including, Enerpac, Ingersoll Rand, Chicago Pneumatic, and Power Team.

HOISTS & PULLERS

We are capable of repairing, load testing, and certifying electric hoists, chain hoists, and pullers

LIFTING & RIGGING

American Producers custom builds chain and wire rope slings, and provides inspection, repair and certification of chain, web and wire slings.

Rigging Services offered, by Huntington Branch:

- Custom made wire rope and chain slings
- Custom lifting device and wire rope inspection
- Nylon / Polyester inspection
- Chain and wire mesh sling inspection
- Educational seminars on the care, use and inspection of chain slings, wire rope, wire mesh slings and round slings
- Visual inspection of under hook lifting devices
- Load testing of chain, wire rope, and Nylon / Polyester slings
- Particle die testing series
- Visual inspection of hoist and pullers load testing of hoist and pullers

WE ARE AN AUTHORIZED REPAIR CENTER FOR:

- DeWalt
- Milwaukee
- Stihl
- CM Hoists
- Enerpac
- Metabo
- Champion Mag Drills
- Honda Power Equipment
- Husqvarna Construction Products
- And more...



**** These Services are only offered in our Marietta, Huntington, Wixom, and Toledo Branches ****

GENERAC®



Generac Automatic Standby Generator

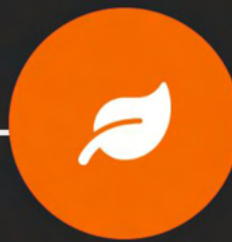
Revolutionizing the 21st century electrical grid.



Generac Portable Generator



Improve energy resilience and independence



Optimize energy efficiency and consumption



Protect and build critical infrastructure

Generac Portable Generator

Marietta, OH
119 Second St
(740) 373-5050

Cincinnati, OH
10770 Kenwood Rd
(513) 791-4252

Columbus, OH
590 N. Hague Ave
(614) 272-1113

Lancaster, OH
1806 Victor Rd
(740) 654-3711

Portsmouth, OH
1763 10th St
(740) 354-3479

Sunbury, OH
6914 St. Rt. 37E
(740) 362-7249

Toledo, OH
1625 Tracy St
(419) 666-7220

Ferdinand, IN
2130 Industrial Park Rd
(812) 998-2130

Glasgow, KY
129 Beaver Trail
(270) 861-0060

Louisville, KY
520 South 15th St
(502) 583-3875

Pittsburgh, PA
7724 Edgewood Ave
(412) 220-2370

State College, PA
2595 Clyde Ave Ste. 2
(814) 308-0071

Wixom, MI
30270 Beck Rd
(248) 669-4040

Huntington, WV
333 Washington Ave
(304) 525-3545

Martinsburg, WV
36 Variform Dr
(304) 263-3364

St. Albans, WV
2822 Winfield Rd
(304) 755-0009